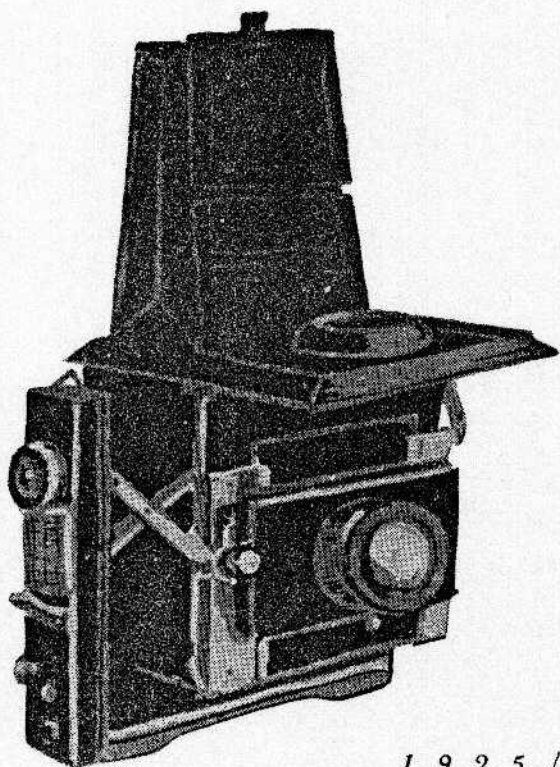


---

# *IHAGEE CAMERAS*

---

---



*1 9 2 5 / 1 9 2 6*

---

---



DRESDEN-A. 19, SCHANDAUER STRASSE 24

Telegram-address: Ihagee Dresden

Telephone No. 35235/36

A. B. C.-Code, 5th edition



## CONDITIONS OF SALE:

The prices are separately in a small price-key. They are not binding ourselves, freight and packing excluded, in Dresden factory.

**Place of settlement** in regard to delivery and payment is Dresden. Purchasers unknown to us are requested to remit the approximate amount of invoice with first order or to permit reimbursement.

**Shipments** are made at receiver's risk and in accordance with his instructions or, if none have been given, in the most advantageous manner known to us, but without any responsibility for any possible extra charges.

**Terms of delivery** are always stated approximately and without obligation on our part. In case of delay we decline liability and any obligation to take back goods.

**Complaints** can be considered only within 8 days after receipt of goods.

**We guarantee** for our goods in such a manner that we renew to our cost the parts, which during 12 months after delivery from our stock are damaged for bad material, faulty construction or defective performance, by putting aside the defects in a good state or compensating gratis. Charges of transport and duty are not to our charges. For foreign goods as lenses &c. we only guarantee in the manner of the manufacturers, who delivered us the respective parts.

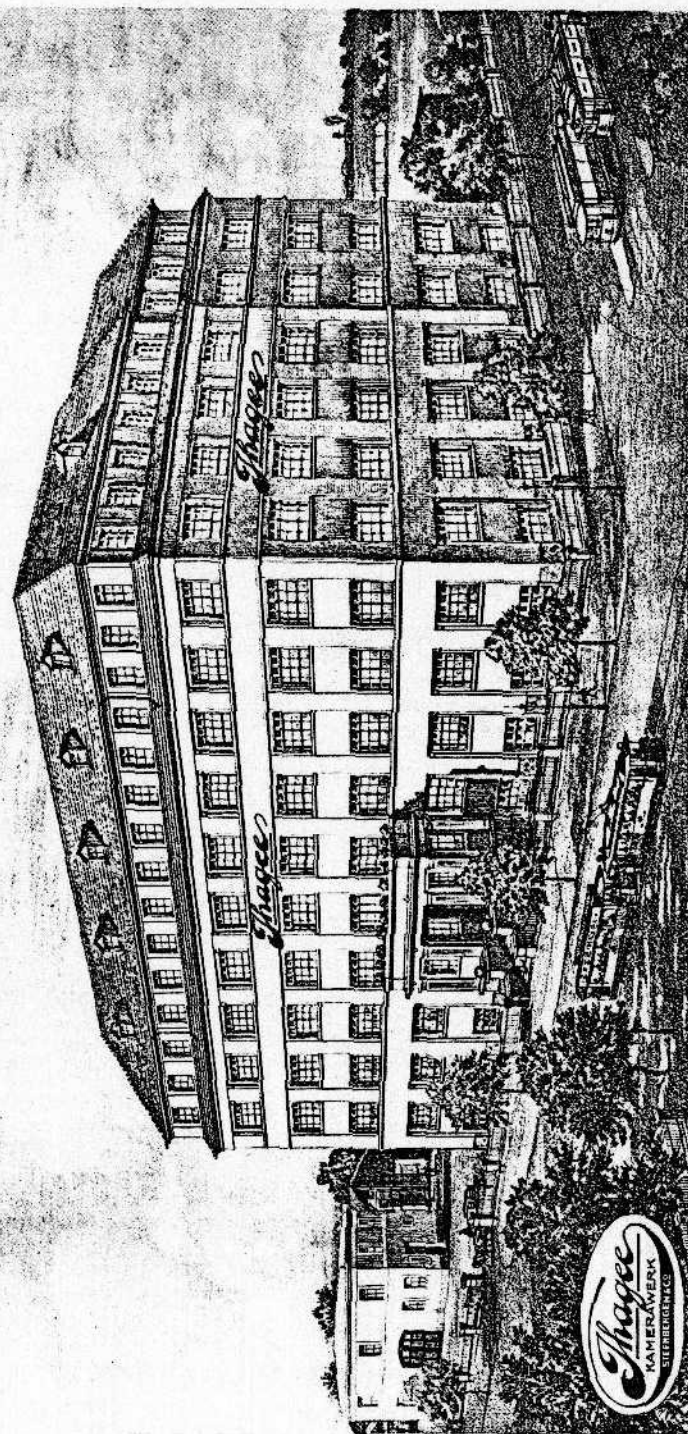
## Branch-houses or Representatives in:

ALEXANDRIA  
ATHEN  
BERLIN  
BILBAO  
BOMBAY  
BOSTON  
BREMEN

DEN HAAG, CONRADKADE 30  
BRUNN  
BRUSSEL  
BUENOS-AIRES  
CARACAS  
CELJE  
ESSEN  
HAMBURG  
HANNOVER

HEILBRONN  
JAFFA  
KONSTANTINOPEL  
LEIPZIG  
LONDON  
MAGDEBURG  
MONTEVIDEO  
PARIS

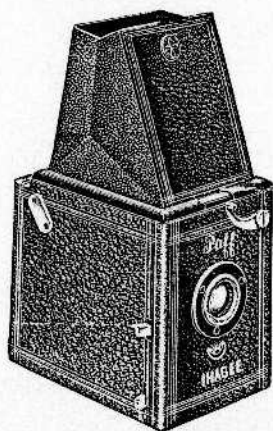
RIGA  
SALONIKI  
SMYRNA  
STOCKHOLM  
TORINO  
WARSCHAU  
WIEN



Our Camera Works in Dresden-Striesen

IHAGEE CAMERA WORKS, STEENBERGEN & CO.

# Ihagee "Plan Paff"



For film packs  $1\frac{3}{4} \times 2\frac{5}{16}$  ins. ( $4,5 \times 6$  cm)

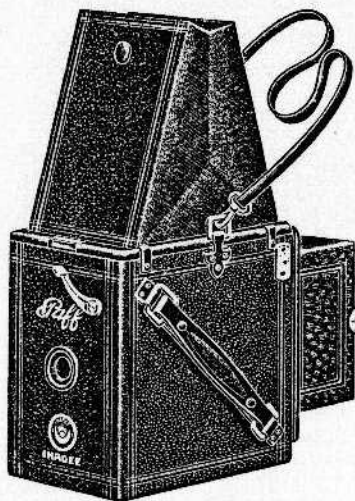
Camera body made of wood and covered with finest artificial leather. Focusing screen above mirror with high light hood, showing the image at correct size of picture until release of shutter. Three diaphragms. Leather handle. Time and instantaneous shutter.

No. 3 Complete camera with first class achromatic lens  
Tel. word: Anton

No. 4 Complete camera with anastigmat Trioplan 1:6,8  
Tel. word: Adolar

## Accessories:

- No. 1671 Artificial leather case. Tel. word: Sac  
No. 10 Clamping device in order to use camera with tripod. Tel. word: Klemmer  
No. 1000a/3 Three metal slides  $1\frac{3}{4} \times 2\frac{5}{16}$  ins. ( $4,5 \times 6$  cm) in case, to make possible working with dry plates. Tel. word: Dreifuss  
No. 1278 Supplementary lens for Paff with achromatic lens. Tel. word: Ansatz  
No. 1279 Supplementary lens for Paff with Trioplan 1:6,8. Tel. word: Anzug



For film packs  $2\frac{1}{4} \times 3\frac{1}{2}$  ins. ( $6 \times 9$  cm)  
and plates  $2\frac{1}{2} \times 3\frac{1}{2}$  ins. ( $6,5 \times 9$  cm)

The body is constructed of well seasoned wood covered with the best artificial leather. Focusing screen fitted with light hood on the back of camera in addition to the one over the mirror, the latter shows the image upright until the moment of release of shutter. 3 diaphragms. Shoulder strap shutter for snapshots and time exposures. Film pack and rollfilm adapter and 3 metal dark slides in case. Tripod bushes.

No. 7 Complete camera fitted with first class achromatic lens with fixed focus. Tel. word: Arthur

No. 8 Complete camera fitted with anastigmat Trioplan 1:6,8 with fixed focus. Tel. word: Albert

No. 9 Complete camera fitted with anastigmat Trioplan 1:6,8 in focusing jacket. Tel. word: Alfons

## Accessories:

- No. 1674 Artificial leather case. Tel. word: Caisse  
No. 1001c/3 Three metal slides in case. Tel. word: Dreiklang  
No. 1280 Supplementary lens for Paff with achromatic lens. Tel. word: Vorsatz  
No. 1281 Supplementary lens for Paff with Trioplan 1:6,8. Tel. word: Vorzug

# Ihagee "Roll Paff"

For rollfilms  $2\frac{1}{4} \times 2\frac{1}{4}$  ins. ( $6 \times 6$  cm)

Camera body of wood covered with finest artificial leather. Focusing screen above mirror with light hood, showing the image at correct size of picture until release of shutter. 3 diaphragms. Leather handle. Time and instantaneous shutter.

No. 20 Complete camera with first-class achromatic lens.

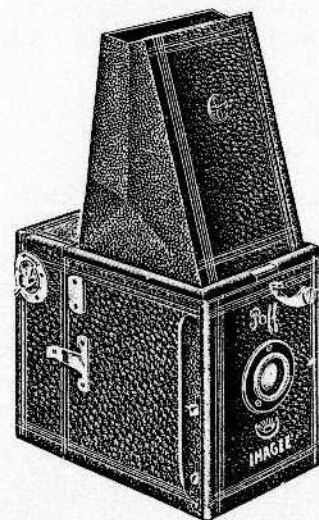
Tel. word: Bruno

No. 21 Complete camera with anastigmat Trioplan 1:6,8

Tel. word: Beowulf

## Accessories:

- No. 1673 Artificial leather case. Tel. word: Boite  
No. 30 Clamping device to use camera with tripod. Tel. word: Kneifer  
No. 1278 Supplementary lens for Paff with achromatic lens. Tel. word: Ansatz  
No. 1279 Supplementary lens for Trioplan. Tel. word: Anzug



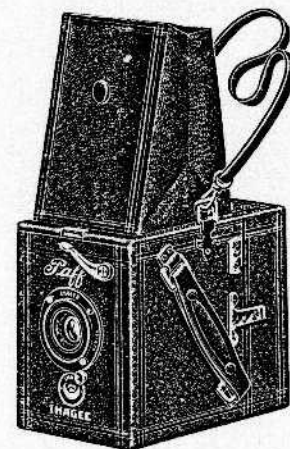
For rollfilms  $2\frac{1}{4} \times 2\frac{1}{4}$  ins. ( $6 \times 6$  cm)

Although this camera can be handled with the greatest ease produces pictures to the experts satisfaction. Special interest has been centered on the lens portion of this highly efficient instrument. This has been now improved by adding a simple mechanism enabling, by means of a lever to focus the lens to various distances.

The body is constructed of well seasoned wood, covered with real leather. Focusing screen above mirror fitted with light hood, showing the image at correct size until the moment of release of shutter. 3 diaphragms. Long shoulder strap. Shutter for snapshots and time exposures. Tripod bush.

No. 22 Complete camera fitted with Goerz Ihagee double anastigmat 1:6,3  
Tel. word: Bertram

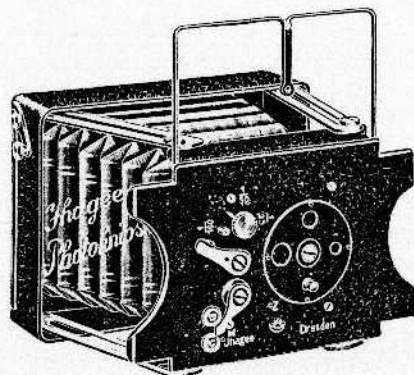
Accessories: No. 1673 Artificial leather case. Tel. word: Boite





# Ihagee "Photoknips"

For plates and filmpacks  $1\frac{3}{4} \times 2\frac{1}{4}$  ins. (4,5  $\times$  6 cm)



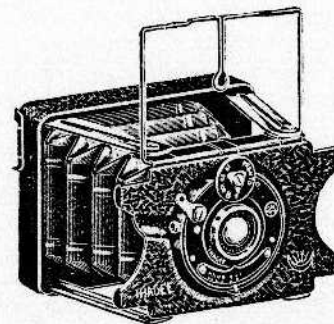
This camera is a very inexpensive, however well designed piece of apparatus and can be carried when closed comfortably in the waist coat pocket

The case and lens standard is made of aluminium, laquered black. All other metal parts are heavily nicked. Leather bellow. Shutter for time and snapshots  $\frac{1}{25}$ — $\frac{1}{100}$  second. Diaphragm with 3 openings. Focusing screen with light hood. 1 metal dark slide. Wire views finder

Size of picture $1\frac{3}{4} \times 2\frac{1}{4}$ ins. (4,5 $\times$ 6 cm)	No.	Tel. word
Camera with 1 dark slide	1	Zelt
Extra dark slide	1000 a	Fuss
3 metal dark slides in case	1000 a/3	Dreifuss
Film-pack adapter	1023	Fibel
Pouch of deer leather	1730	Wildleder
Patent release	2152	Draht

# Ihagee "Photoknips"

For plates and filmpacks  $1\frac{3}{4} \times 2\frac{1}{4}$  ins. (4,5  $\times$  6 cm)



This apparatus can be carried comfortably in the waist coat pocket

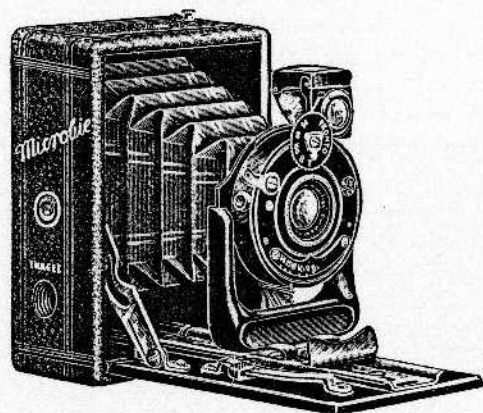
★

The case and lens standard is made of aluminium, laquered black. All other metal parts are heavily nicked. Leather bellow. Wire views finder. Pronto shutter for time and snapshots  $\frac{1}{25}$ — $\frac{1}{100}$  second and anastigmat Trioplan 1:6,8. Irisdiaphragm. Focusing screen with light hood. 3 metal slides

Size of picture $1\frac{3}{4} \times 2\frac{1}{4}$ ins. (4,5 $\times$ 6 cm)	No.	Tel. word
Camera with anastigmat Trioplan 1:6,8	2	Zelle
Extra slide	1000 a	Fuss
3 slides in case	1000 a/3	Dreifuss
Film-pack slide	1023 a	Fibel
Supplementary lens	1279	Anzug

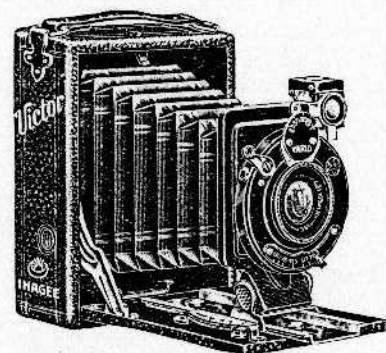
# Vest Pocket Photoklapp "Microbie"

For plates and filmpacks  $1\frac{3}{4} \times 2\frac{5}{16}$  ins. (4,5×6 cm)



# Pocket Photoklapp "Victor"

For plates and filmpacks  $2\frac{1}{2} \times 3\frac{1}{2}$  ins. (6,5×9 cm)



Body of camera of wood, covered with genuine leather. Leather bellow. Baseboard and lens standard black enamelled. Focusing screen with light hood. Patent release. Iris diaphragm. Brilliant finder. Tripod bushes. 3 metal slides in case

Size of picture $1\frac{3}{4} \times 2\frac{5}{16}$ ins. (4,5×6 cm)	With Pronto shutter for time and instantaneous exposures of $\frac{1}{25}$ — $\frac{1}{100}$ sec.		With Compur shutter for time and instantaneous exposures of $\frac{1}{25}$ — $\frac{1}{300}$ sec.	
	No.	Tel. word	No.	Tel. word
Anastigmat Trioplan	1:6,8	12 p	Datel	—
Double anastigmat Veraplan	1:6,8	15 p	Delos	15 c
Double anastigmat Veraplan	1:5,4	—	—	16 c
Double anastigmat Veraplan	1:4,5	—	—	18 c
Goerz Ihagee double anastigmat	1:6,3	—	—	17 c
Extra slide	1000 a	Fuss	—	—
3 metal slides in case	1000 a 3	Dreifuss	—	—
Film-pack slide	1023 a	Fibel	—	—
Leather case	1696	Kiste	—	—
Pouch of deer leather	1752	Ther	—	—

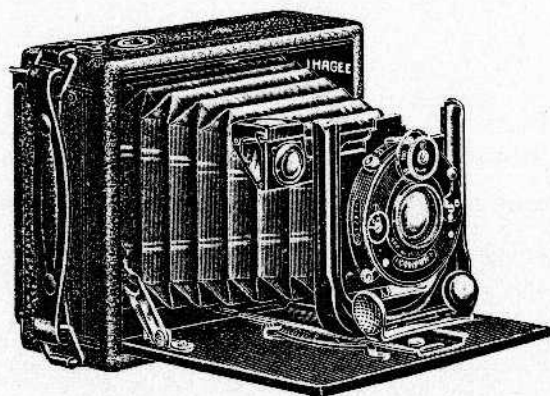
## Adjustment with new lever

Body of camera covered with artificial leather. Leather bellow. Baseboard and lens standard black enamelled and of aluminium. Focusing screen with light hood. Patent release. Iris diaphragm. Brilliant finder. Tripod bushes. 3 metal slides

Size of picture $2\frac{1}{2} \times 3\frac{1}{2}$ ins. (6,5×9 cm)		With shutter for time and instantaneous exposures $\frac{1}{25}$ — $\frac{1}{100}$ sec.	
		No.	Tel. word
Anastigmat Trioplan	1:6,8	200 v	Gabriela
Double anastigmat Veraplan	1:6,8	205 v	Gerda
Extra slide		1001 c	Klang
3 metal slides in case		1001 c/3	Dreiklang
Film-pack slide		1024 c	Fichte
Artificial leather case for camera and 3 slides		1675	Poche

# Pocket Photoklapp "Venus"

For plates and film packs  $2\frac{1}{2} \times 3\frac{1}{2}$  ins. (6,5×9 cm)



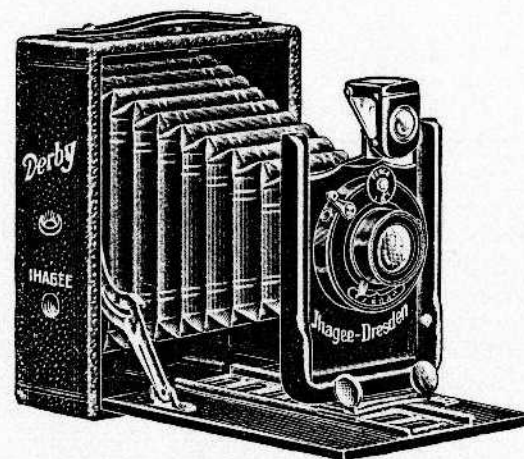
Adjustment with new lever

A broad-shaped model. Body of camera covered with genuine leather. Leather bellow. Baseboard and lens standard black enamelled. Focusing screen with light hood. Patent release. Iris diafragm. Brilliant finder. Tripod bushes. 3 metal slides

Size of picture $2\frac{1}{2} \times 3\frac{1}{2}$ ins. (6,5×9 cm)	With shutter for time and instantaneous $\frac{1}{25}$ — $\frac{1}{100}$ sec.		With Ibs shutter for time and instantaneous 1— $\frac{1}{100}$ sec.		With Compur shutter for time and instantaneous 1— $\frac{1}{200}$ sec.	
	No.	Tel.-word	No.	Tel.-word	No.	Tel.-word
Anastigmat Trioplan 1:6,8	34 v	Fama	—	—	—	—
Double anast.Veraplan 1:6,8	35 v	Femina	35 i	Festus	35 c	Ferrum
Double anast.Veraplan 1:5,4	—	—	—	—	36 c	Finitum
Double anast.Veraplan 1:4,5	—	—	—	—	37 c	Folium
Goerz Ihagee double anastigmat 1:6,3	—	—	—	—	38 c	Futurum
Extra slide	1001 c	Klang	—	—	—	—
3 metal slides in case	1001 c 3	Dreiklang	—	—	—	—
Filmpack slide	1024 c	Fichte	—	—	—	—
Artificial leather case for camera and 3 slides	1675	Poche	—	—	—	—

# Photoklapp "Derby"

For plates and film packs made in  $\frac{1}{4}$  plate and  $9 \times 12$  cm



A great favorite with beginners  
Substantially built

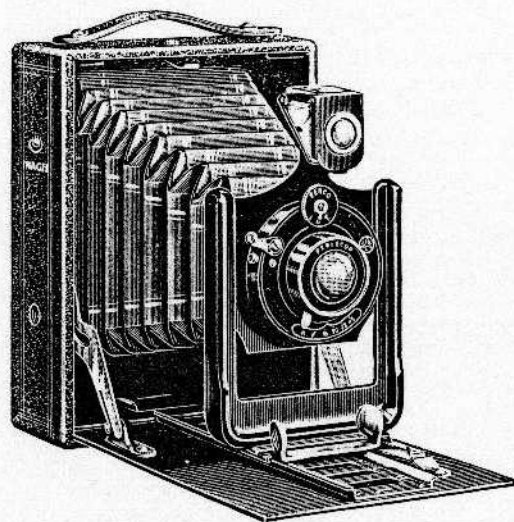
Body of camera wood, covered with artificial leather. Leather bellow. Patent release. Baseboard and lens standard black enamelled. Focusing screen with light hood. Iris diaphragm. Brilliant finder. Tripod bushes. One metal slide

Size of picture $\frac{1}{4}$ plate and $9 \times 12$ cm	Shutter for time and instantaneous exposures	
	No.	Tel.-word
Periscopic double lens	46	Christa
Luxar aplanat 1:7,7	47	Chile
Anastigmat Trioplan 1:6,8 with Vario shutter	48	Charles
Extra slide	1002 a	Takt
Filmpack slide	1025 a	Fiedel
Artificial leather case for camera and slide	1676	Box



# Photoklapp "Ama"

For plates and filmpacks made in  $\frac{1}{4}$  plate and  $9 \times 12$  cm

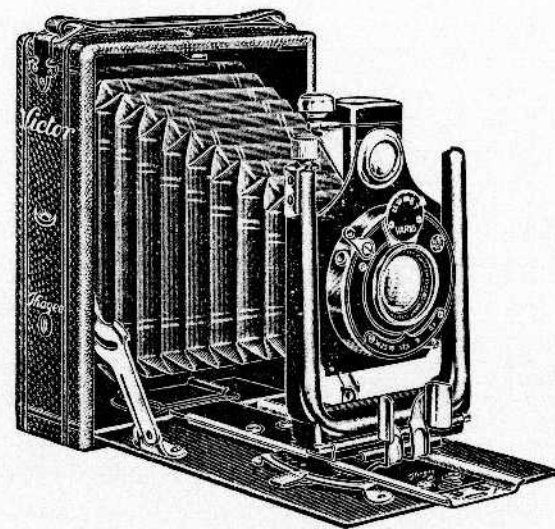


Body of camera covered with artificial leather. Leather bellows. Baseboard and lens standard black enamelled. Focusing screen with light hood. Lens standard adjustable in high and deep. Patent release. Iris diaphragm. Brilliant finder. Tripod bushes. One metal slide

Size of picture $\frac{1}{4}$ plate and $9 \times 12$ cm	Shutter for time and instantaneous exposures	
	No.	Tel.-word
Periscopic double lens	56	Zeit
Luxar Aplanat 1:7,7	57	Zahl
Anastigmat Trioplan 1:6,8 with Vario shutter	58	Zucht
Extra slide	1002 a	Takt
Film-pack slide	1025 a	Fiedel
Artificial leather case for camera and slide	1676	Box

# Photoklapp "Victor"

For plates and filmpacks  $\frac{1}{4}$  plate and  $9 \times 12$  cm, post-card and  $10 \times 15$  cm



Adjustment with new lever

Body covered with artificial leather. Black enamelled baseboard and lens standard. Leather bellows. Lens part adjustable in all directions. Focusing screen with light hood. Patent release. Iris diaphragm. Brilliant view finder with spirit level. Tripod nuts. Three metal slides

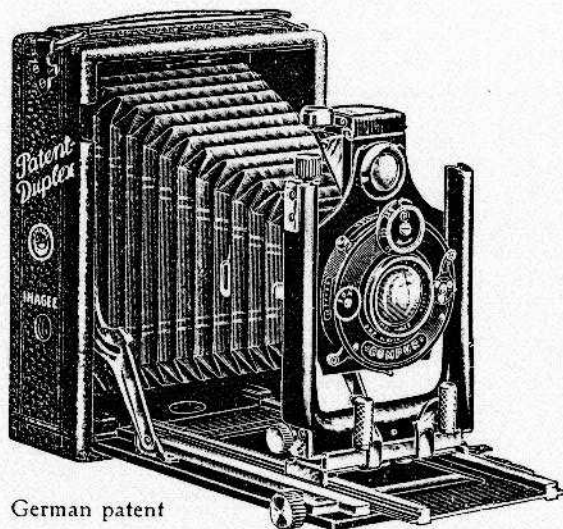
Size of picture $\frac{1}{4}$ plate and $9 \times 12$ cm	Shutter for time and instantaneous exposures $\frac{1}{25}$ - $\frac{1}{100}$ sec.		Ibso shutter for time and instant. exposures 1 - $\frac{1}{100}$ sec.	
	No.	Tel.-word	No.	Tel.-word
Anastigmat Trioplan	1:6,8	252 v	Hanna	—
Double anastigmat Veraplan	1:6,8	256 v	Helga	256 i
Extra slide		1002 a	Takt	—
3 metal slides in case		1002 a/3	Dreitakt	—
Film-pack slide		1025 a	Fiedel	—
Artificial leather case for camera and 3 slides		1676	Box	—

Size of picture post-card and  $10 \times 15$  cm

Anastigmat Trioplan	1:6,8	301 v	Ida	—	—
Double anastigmat Veraplan	1:6,8	305 v	Isabella	305 i	Inge
Extra slide		1003 a	Eck	—	—
3 metal slides in case		1003 a/3	Dreieck	—	—
Film-pack slide		1026 a	Figur	—	—
Artificial leather case for camera and 3 slides		1677	Chest	—	—

# Photoklapp "Patent-Duplex"

For plates and film packs  $2\frac{1}{2} \times 3\frac{1}{2}$  ins. ( $6,5 \times 9$  cm),  $\frac{1}{4}$  plate and  $9 \times 12$  cm, post-card and  $10 \times 15$  cm,  $\frac{1}{2}$  plate and  $13 \times 18$  cm



German patent

With double extension  
and covered rack and pinion

Body of camera covered with genuine leather. Leather bellows. Baseboard and lens standard black enamelled. Lens part adjustable by means of mechanism in all directions. Focusing screen with light hood. Patent release. Iris diaphragm. Brilliant finder with spirit level. Infinity stop with automatic release (German patent) when adjusted for short distance

# Photoklapp "Patent-Duplex"

Size of pictures $2\frac{1}{2} \times 3\frac{1}{2}$ ins. ( $6,5 \times 9$ cm)	Shutter for time and instantaneous exposures $\frac{1}{25}$ — $\frac{1}{100}$ sec.		Ibso shutter for time and instant. exposures $\frac{1}{25}$ — $\frac{1}{100}$ sec.		Compur shutter for time and instant. exposures $\frac{1}{25}$ — $\frac{1}{250}$ sec.	
	No.	Tel.-word	No.	Tel.-word	No.	Tel.-word
Anastigmat Trioplan 1:6,8	327 v	Lava	—	—	—	—
Double anast. Veraplan 1:6,8	328 v	Lena	328 i	Lentus	328 c	Lesbium
Double anast. Veraplan 1:5,4	—	—	—	—	325 c	Lithium
Double anast. Veraplan 1:4,5	—	—	—	—	326 c	Lolium
Goerz Ihagee double anastigmat 1:6,5	—	—	—	—	333 c	Lustrum
Extra slide	1001 c	Klang	—	—	—	—
3 metal slides in case	1001 c/3	Dreiklang	—	—	—	—
Film pack slide	1024 c	Fichte	—	—	—	—
Leather case for camera and 3 slides	1695	Tasche	—	—	—	—

Size of picture  $\frac{1}{4}$  plate and  $9 \times 12$  cm

Anastigmat Trioplan 1:6,8	357 v	Marta	—	—	[rius	—	—
Double anast. Veraplan 1:6,8	358 v	Meta	358 i	Mercus	—	358 c	Medium
Double anast. Veraplan 1:5,4	—	—	—	—	—	355 c	Minimum
Double anast. Veraplan 1:4,5	—	—	—	—	—	354 c	Monitum
Goerz Ihagee double anastigmat 1:6,5	—	—	—	—	—	363 c	Municipi-
Extra slide	1002 a	Takt	—	—	—	—	—
3 metal slides in case	1002 a/3	Dreitakt	—	—	—	—	—
Film pack slide	1025 a	Fiedel	—	—	—	—	—
Leather case for camera and 3 slides	1680	Case	—	—	—	—	—

Size of pictures post-card and  $10 \times 15$  cm

Anastigmat Trioplan 1:6,8	407 v	Narva	—	—	—	—	—
Double anast. Veraplan 1:6,8	408 v	Newa	408 i	Nessus	408 c	Negotium	—
Double anast. Veraplan 1:5,4	—	—	—	—	405 c	Nitrum	—
Goerz Ihagee double anastigmat 1:6,5	—	—	—	—	412 c	Nubium	—
Extra slide	1005 a	Eck	—	—	—	—	—
3 metal slides in case	1005 a/3	Dreieck	—	—	—	—	—
Film pack slide	1026 a	Figur	—	—	—	—	—
Leather case for camera and 3 slides	1685	Trunk	—	—	—	—	—

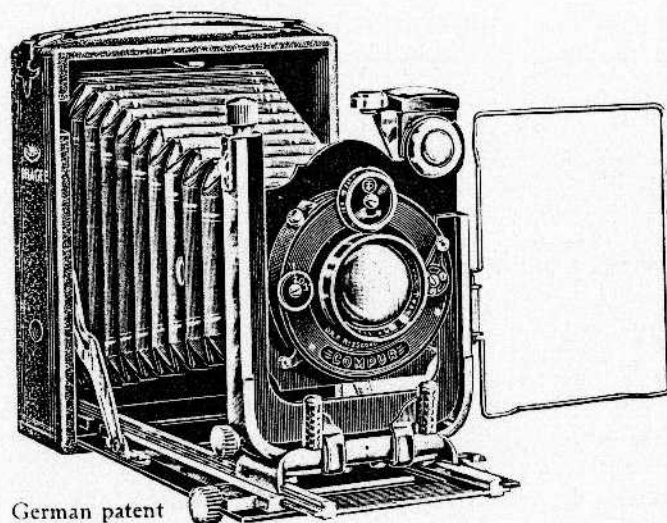
Size of pictures  $\frac{1}{2}$  plate ( $12 \times 16,5$ ) and  $13 \times 18$  cm

Double anast. Veraplan 1:6,8	455 v	Ophelia	455 i	Oedipus	455 c	Odeum	—
Double anast. Veraplan 1:5,4	—	—	—	—	460 c	Osmium	—
Extra slide	1005 a	Rad	—	—	—	—	—
3 metal slides in case	1005 a/3	Dreirad	—	—	—	—	—
Film pack slide	1027 a	Filter	—	—	—	—	—
Leather case for camera and 3 slides	1690	Safe	—	—	—	—	—



# Photoklapp "Luxus-Duplex"

For plates and filmpacks  $2\frac{1}{2} \times 3\frac{1}{2}$  ins. (6,5×9 cm),  $\frac{1}{4}$  plate and  $9 \times 12$  cm, post-card and  $10 \times 15$  cm,  $\frac{1}{2}$  plate and  $13 \times 18$  cm



With double extension  
and covered rack and pinion

# Photoklapp "Luxus-Duplex"

Body of camera  
covered with genuine leather.  
Leather bellows. Baseboard black enamelled.  
Lens standard of solid brass. Lens part adjustable by means of  
mechanism in all directions. Focusing screen with light hood.  
Patent release. Iris diaphragm. Brilliant finder with  
spirit level. Infinity stop with automatic release  
(German patent) when adjusted for short  
distance. Tripod bushes. Three  
german silver slides.

\*

Size of pictures $2\frac{1}{2} \times 3\frac{1}{2}$ ins. (6,5×9 cm)		Compur shutter for time and instant. exposures $1-\frac{1}{500}$ sec.	
		No.	Tel. word
Double anastigmat Veraplan	1:4,5	341 c	Xerxes
Goerz double anastigmat Dogmar	1:4,5	346 c	Xenos
Extra german silver slide		1007 a	Bund
3 german silver slides in case		1007 a/3	Dreibund
German silver film-pack slide		1031 a	Finger
Leather case for camera and 3 slides		1695	Tasche

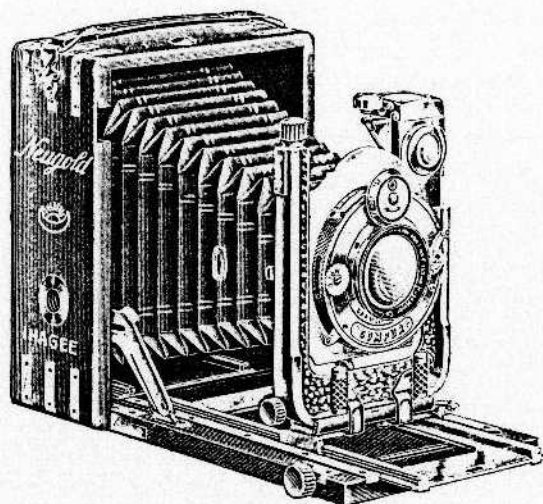
Size of pictures $\frac{1}{4}$ plate and $9 \times 12$ cm			
Double anastigmat Veraplan	1:4,5	371 c	Else
Goerz double anastigmat Dogmar	1:4,5	378 c	Edith
Extra german silver slide		1006 a	Schlag
3 german silver slides in case		1006 a/3	Dreischlag
German silver film-pack slide		1030 a	Finte
Leather case for camera and 3 slides		1680	Case

Size of pictures post-card and $10 \times 15$ cm			
Double anastigmat Veraplan	1:4,5	421 c	Paula
Goerz double anastigmat Dogmar	1:4,5	426 c	Pia
Extra german silver slide		1008 a	Mark
3 german silver slides in case		1008 a/3	Dreimark
German silver film-pack slide		1032 a	Fiskus
Leather case for camera and 3 slides		1685	Frunk

Size of pictures $\frac{1}{2}$ plate ( $12 \times 16\frac{1}{2}$ cm) and $13 \times 18$ cm			
Double anastigmat Veraplan	1:4,5	471 c	Lore
Goerz double anastigmat Dogmar	1:4,5	476 c	Lucie
Extra german silver slide		1009 a	Mäderl
3 german silver slides in case		1009 a/3	Dreimäderl
German silver film-pack slide		1033 a	Firma
Leather case for camera and 3 slides		1690	Safe

# Photoklapp "Neugold"

for plates and film packs  $2\frac{1}{2} \times 3\frac{1}{2}$  ins. ( $6,5 \times 9$  cm),  $\frac{1}{2}$  plate and  $9 \times 12$  cm and post-card and  $10 \times 15$  cm



With double extension  
and covered rack and pinion

The careful selection  
of the materials and the excellent workmanship  
permit the use of this camera  
in tropical climates

Body of camera and baseboard of best teak, brilliantly polished with countersunk brass angles. Bellow of finest genuine leather. Brass front U-shaped. Lens part adjustable by means of mechanism in all directions. Focusing screen with light hood. Brass fittings. Patent release. Iris diaphragm. Large brilliant view finder with spirit level. Infinity stop with automatic release (German patent) when adjusted to nearness. Tripod bushes. 3 german silver slides

# Photoklapp "Neugold"

Size of pictures $2\frac{1}{2} \times 3\frac{1}{2}$ ins. $6,5 \times 9$ cm		Compur shutter for time and instant. 1--- $\frac{1}{200}$ sec.	
		No.	Tel.-word
Double anastigmat Veraplan	1:6,8	2175 c	Plenum
Double anastigmat Veraplan	1:5,4	2177 c	Pictum
Double anastigmat Veraplan	1:4,5	2179 c	Postulatum
Goerz double anastigmat Dagor	1:6,8	2183 c	Pluvium
Goerz double anastigmat Dogmar	1:4,5	2185 c	Pulchrum
Extra german silver slide		1007 a	Bund
3 german silver slides in case		1007 a/3	Dreibund
German silver film-pack slide		1031 a	Finger
Leather case for camera and 3 slides		1695	Tasche
Size of pictures $\frac{1}{2}$ plate and $9 \times 12$ cm			
Double anastigmat Veraplan	1:6,8	2200 c	Regium
Double anastigmat Veraplan	1:5,4	2230 c	Rigorosum
Double anastigmat Veraplan	1:4,5	2262 c	Rostrum
Goerz double anastigmat Dagor	1:6,8	2270 c	Rubrum
Goerz double anastigmat Dogmar	1:4,5	2280 c	Rudimentum
Extra german silver slide		1006 a	Schlag
3 german silver slides in case		1006 a/3	Dreischlag
German silver film-pack slide		1030 a	Finte
Leather case for camera and 3 slides		1680	Case
Size of pictures post-card and $10 \times 15$ cm			
Double anastigmat Veraplan	1:6,8	2310 c	Siegmund
Double anastigmat Veraplan	1:5,4	2312 c	Signal
Double anastigmat Veraplan	1:4,5	2315 c	Silvester
Goerz double anastigmat Dogmar	1:4,5	2319 c	Sinus
Extra german silver slide		1008 a	Mark
3 german silver slides in case		1008 a/3	Dreimark
German silver film-pack slide		1032 a	Fiskus
Leather case for camera and 3 slides		1685	Trunk

## Metal-slides-carriers

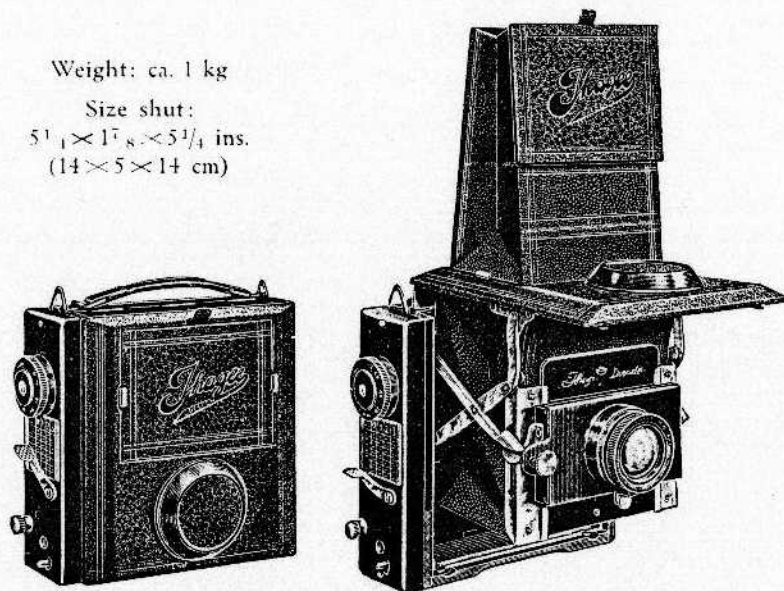
No. 1073	$4,5 \times 6$ cm	in slides $6,5 \times 9$ cm	Tel.-word: Meter
No. 1074	$4,5 \times 6$ cm	in slides $9 \times 12$ cm	Tel.-word: Methyl
No. 1075	$6,5 \times 9$ cm	in slides $9 \times 12$ cm	Tel.-word: Methode
No. 1076	$9 \times 12$ cm	in slides $10 \times 15$ cm	Tel.-word: Mette
No. 1077	$9 \times 12$ cm	in slides $13 \times 18$ cm	Tel.-word: Metrik
No. 1078	$10 \times 15$ cm	in slides $13 \times 18$ cm	Tel.-word: Metall

# Ihagee Patent "Klapp-Reflex"

For plates and film packs  $2\frac{1}{2} \times 3\frac{1}{2}$  ins. (6,5  $\times$  9 cm)  
The smallest and lightest Folding Reflex of excellent stability!

Weight: ca. 1 kg

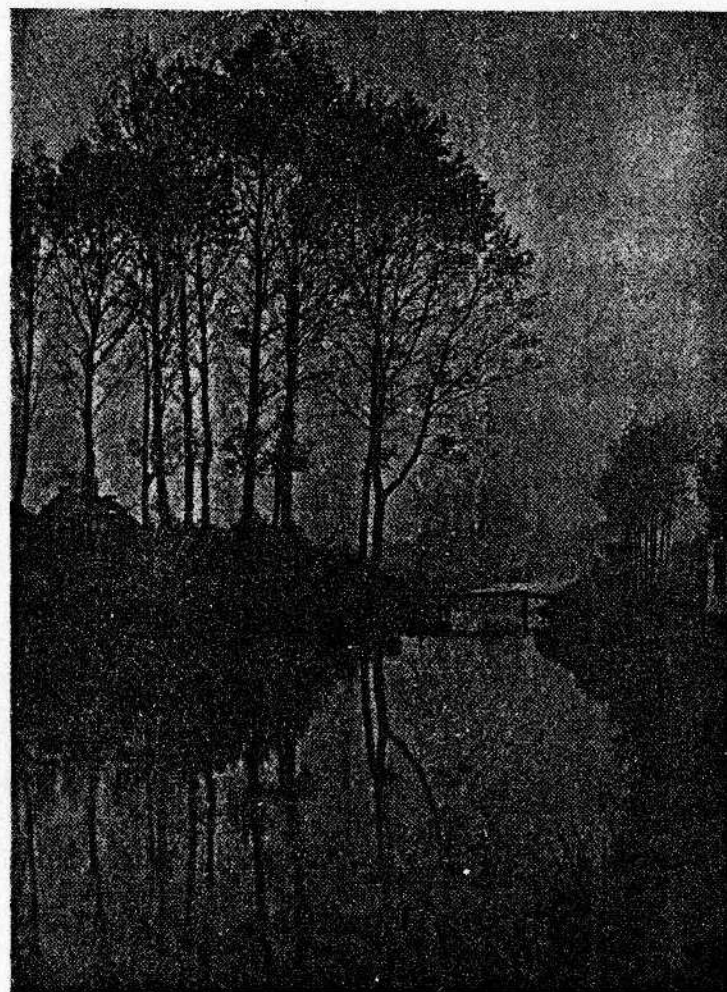
Size shut:  
 $5\frac{1}{4} \times 1\frac{7}{8} \times 5\frac{1}{4}$  ins.  
(14  $\times$  5  $\times$  14 cm)



## Equipment:

- 3 metal dark slides leather covered in leather valet.
- Film pack adapter leather covered.
- Shoulder strap.

The Ihagee Patent Klapp-Reflex is only slightly bigger than any ordinary folding camera. The camera can be opened ready for exposure with one operation and at the same time is automatically focussed for the infinity. The shutter has a covered mechanism and works entirely without a jarr. The mirror rests on a base which ensures the mirror to maintain an angle of  $45^\circ$ . The camera is leather covered and equipped with leather bellow, as well as shoulder strap

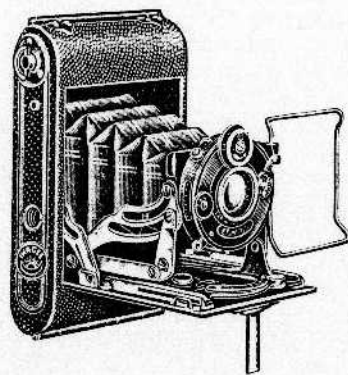


Size of pictures $2\frac{1}{2} \times 3\frac{1}{2}$ ins. (6,5 $\times$ 9 cm)	No.	Tel. word	
Meyer double anastigmat Veraplan	1: 4,5	500	Reform
Schneider double anastigmat Xenar	1: 4,5	501	Regent
Zeiss Tessar	1: 4,5	503	Report
Goerz double anastigmat Dogmar	1: 4,5	504	Res
Extra slide covered with leather		1012 a	Blatt
3 slides in leather case		1012 a 3	Dreiblatt
Leather case for camera and 3 slides		1705	Behaelter



# "Ultrix Automat"

For rollfilms  $1\frac{5}{8} \times 2\frac{1}{2}$  ins. ( $4 \times 6,5$  cm.) Adjustment with new lever



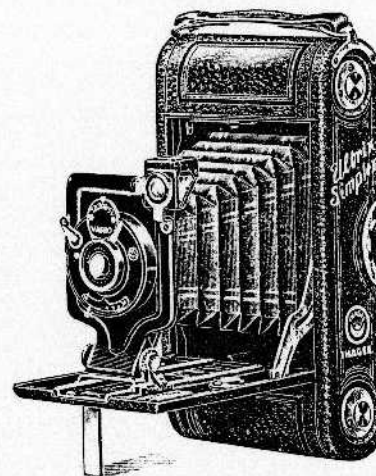
By the opening of the camera  
the lens is automatically focussed for the infinity.  
The apparatus is therefore on opening,  
immediately ready for exposure.

The body of camera is drawn in one piece from aluminium and is covered  
with leather. Leather bellow. Wire view finder. Focusing lever. Patent release.  
Tripod bushes.

Size of pictures $1\frac{5}{8} \times 2\frac{1}{2}$ ins. ( $4 \times 6,5$ cm)		With Pronto shutter for time and instantaneous exposures of $\frac{1}{25}$ — $\frac{1}{100}$ sec.		With Compur shutter for time and instantaneous exposures of $\frac{1}{25}$ — $\frac{1}{300}$ sec.	
		No.	Tel.-word	No.	Tel.-word
Anastigmat Trioplan	1:6,8	25 p	Kern	—	—
Double anastigm. Veraplan	1:5,4	—	—	28 c	Kurfe
Double anastigm. Veraplan	1:4,5	—	—	30 c	Kummer
Zeiss Triotar	1:6,5	—	—	29 c	Kelch
Leather case		1697	Taeschchen	—	—

# "Ultrix Simplex"

For rollfilms  $2\frac{1}{4} \times 3\frac{1}{2}$  ins. ( $6 \times 9$  cm)  $2\frac{1}{2} \times 4\frac{1}{2}$  ins. ( $6,5 \times 11$  cm)



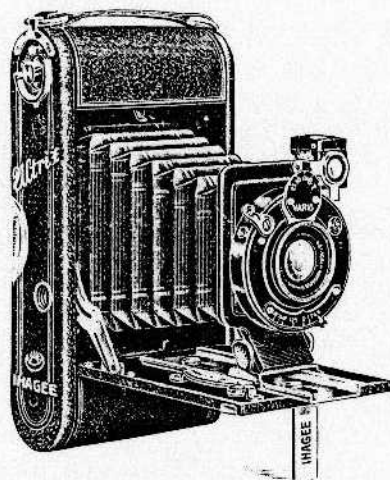
An excellent model!

Body covered with artificial leather. Leather bellow. Black enamelled base-  
board and standard. Spring-in-apparatus of diverse distance. Wire release.  
Iris diaphragm. Brilliant view finder. Tripod bushes.

L e n s	Shutter fore time and instant. exposures			
	Size of pict. $2\frac{1}{4} \times 3\frac{1}{2}$ ins.		Size of pict. $2\frac{1}{2} \times 4\frac{1}{2}$ ins.	
	No.	Tel.-word	No.	Tel.-word
Periscopic double Lens	166	Sahara	171	Simplon
Luxar-Aplanat	167	Samuel	172	Sieger
Artificial leather case	1678	Kasten	1679	Kästchen

# Ihagee "Ultrix"

For rollfilms  $2\frac{1}{4} \times 3\frac{1}{2}$  ins. (6×9 cm)  $2\frac{1}{2} \times 4\frac{1}{2}$  ins. (6,5×11 cm)  
 $2\frac{7}{8} \times 4\frac{7}{8}$  ins. ( $7\frac{1}{4} \times 12\frac{1}{2}$  cm)



Adjustment with new lever

# Ihagee "Ultrix"

\*

Body covered with genuine leather.

Leather bellows. Baseboard and lens standard black enamelled.

Patent release. Iris diaphragm. Brilliant  
view finder. Tripod bushes

\*

Size of pictures $2\frac{1}{4} \times 3\frac{1}{2}$ ins. (6×9 cm)	Shutter for time and instant. $\frac{1}{200}$ — $\frac{1}{100}$ sec.		Iso shutter for time and instant. $\frac{1}{100}$ — $\frac{1}{50}$ sec.		Compur shutter for time and instant. $\frac{1}{100}$ — $\frac{1}{250}$ sec.	
	No.	Tel.-word	No.	Tel.-word	No.	Tel.-word
Anastigmat Trioplan 1:6,8	175 v	Tatra	—	—	—	—
Double anast. Veraplan 1:6,8	178 v	Tekla	178 i	Tertius	178 c	Tectum
Goerz-Ihagee 1:6,3	—	—	—	—	185 c	Tusculum
Leather box	1698	Beutel	—	—	—	—

## Size of pictures $2\frac{1}{2} \times 4\frac{1}{2}$ ins. (6,5×11 cm)

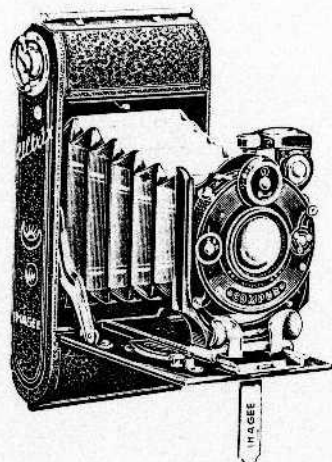
Anastigmat Trioplan 1:6,8	186 v	Uganda	—	—	—	—
Double anast. Veraplan 1:6,8	187 v	Ulema	187 i	Umbertus	187 c	Uberium
Goerz-Ihagee 1:6,3	—	—	—	—	191 c	Ursulinum
Leather case	1699	Schatulle	—	—	—	—

## Size of pictures $2\frac{7}{8} \times 4\frac{7}{8}$ ins. ( $7\frac{1}{4} \times 12\frac{1}{2}$ cm)

Anastigmat Trioplan 1:6,8	210 v	Stampa	—	—	—	—
Double anast. Veraplan 1:6,8	212 v	Stella	212 i	Stephanus	212 c	Sternum
Goerz-Ihagee 1:6,3	—	—	—	—	220 c	Strontium
Leather case	1700	Schachtel	—	—	—	—

# Ihagee "Ultrix"

For rollfilms  $2\frac{1}{4} \times 3\frac{1}{2}$  ins. (6×9 cm)



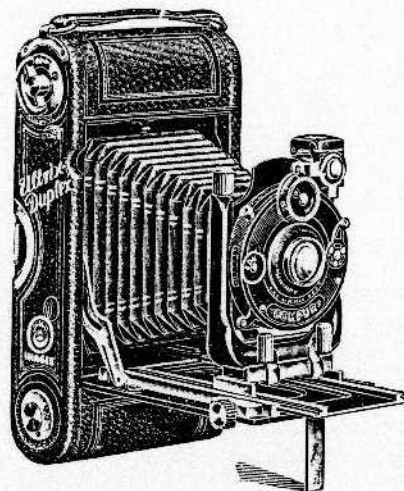
Adjustment with new lever  
A Rollfilm camera of highest perfection!

Body of camera is drawn in one piece of aluminium and is covered with genuine leather. Leather bellow. Baseboard and lens standard black enamelled. Patent release or release by finger pressure. Brilliant finder. Iris diaphragm. Tripod bushes

Size of picture $2\frac{1}{4} \times 3\frac{1}{2}$ ins. (6×9 cm)	Shutter for time and instantaneous $\frac{1}{25}$ — $\frac{1}{100}$ sec. No.   Tel.-word		Ibso-shutter for time and instantaneous $\frac{1}{25}$ — $\frac{1}{100}$ sec. No.   Tel.-word		Compur shutter for time and instant. $\frac{1}{25}$ — $\frac{1}{100}$ sec. No.   Tel.-word	
Double anast. Veraplan 1:6,8	2800 v	Lima	2800 i	Landsberg	2800 c	London
Double anast. Veraplan 1:5,4	—	—	—	—	2801 c	Lissabon
Double anast. Veraplan 1:4,5	—	—	—	—	2803 c	Leipzig
Double anastigmat Goerz Ihagee 1:6,3	—	—	—	—	2805 c	Lincoln
Double anastigmat Goerz Dogmar 1:4,5	—	—	—	—	2813 c	Lodz
Leather case	1705	Sacco	—	—	—	—

# "Ultrix Duplex"

For rollfilms  $2\frac{1}{4} \times 3\frac{1}{2}$  ins. (6×9 cm) and plates  $2\frac{1}{2} \times 3\frac{1}{2}$  ins. (6,5×9 cm)



With double extension and covered rack and pinion.

The Ultrix Duplex  
is fitted with adapter to enable to use metal  
dark slides for plates  $2\frac{1}{2} \times 3\frac{1}{2}$  ins.  
(6,5×9 cm)

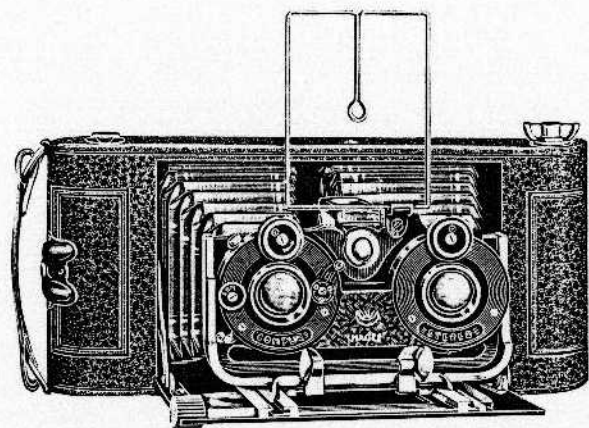
Body covered with real leather. Leather bellow. Baseboard and lens standard black enamelled. Lens part adjustable by means of mechanism in all directions. Infinity stop with automatic release (German patent), when adjusted to nearness. Wire release. Iris diaphragm. Brilliant view finder. Tripod bushes. Adapter with frame for focusing screen and three metal slides.

L e n s	Shutter for time and instant. exposures $\frac{1}{25}$ — $\frac{1}{100}$ sec. No.   Tel.-word		Ibso shutter for time and instant. exposures. $\frac{1}{25}$ — $\frac{1}{100}$ sec. No.   Tel.-word		Compur shutter for time and instant. exposures. $\frac{1}{25}$ — $\frac{1}{100}$ sec. No.   Tel.-word	
	No.	Tel.-word	No.	Tel.-word	No.	Tel.-word
Anastigmat Trioplan 1:6,8	195 v	Varna	—	—	—	—
Double anast. Veraplan 1:6,8	195 v	Vesta	195 i	Velus	195 c	Verbum
Double anast. Veraplan 1:5,4	—	—	—	—	196 c	Visum
Double anast. Veraplan 1:4,5	—	—	—	—	197 c	Votum
Goerz Ihagee 1:6,3	—	—	—	—	198 c	Vulca
Extra slide	1001 c	Klang	—	—	—	— [num
3 metal slides in case	1001 c 3	Dreiklang	—	—	—	—
Filmpack slide	1024 c	Fichte	—	—	—	—
Leather case	1698	Beutel	—	—	—	—



# "Ultrix Stereo"

For rollfilm  $2\frac{7}{8} \times 4\frac{7}{8}$  ins. (7,25 x 12,5 cm)



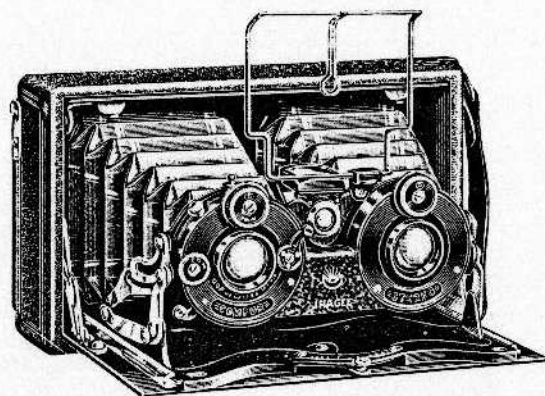
With covered rack and pinion

Body covered with genuine leather. Leather bellows. Black enamelled baseboard. Lens standard of solid brass. Focusing screen with light hood. Wire finder and brilliant finder. Iris diaphragms. Patent release (German patent), when adjusted for short distance. Tripod nut.

L e n s		With Pronto shutter for time and instantaneous exposures for $\frac{1}{25}$ — $\frac{1}{100}$ sec.		With Compur shutter for time and instantaneous exposures of $\frac{1}{250}$ — $\frac{1}{500}$ sec.	
		No.	Tel.-word	No.	Tel.-word
Anastigmat Trioplan	1:6,8	2501 v	Carmen	—	—
Double anastigmat Veraplan	1:5,4	—	—	2503 c	Carola
Double anastigmat Veraplan	1:4,5	—	—	2505 c	Cardinal
Zeiss Triotar	1:6,3	—	—	2507 c	Carthago
Leather case		1700	Hülle	—	—

# Photoklapp "Stereo-Automat"

For plates and film packs  $2\frac{1}{2} \times 5\frac{1}{8}$  ins. (6,5 x 13 cm)



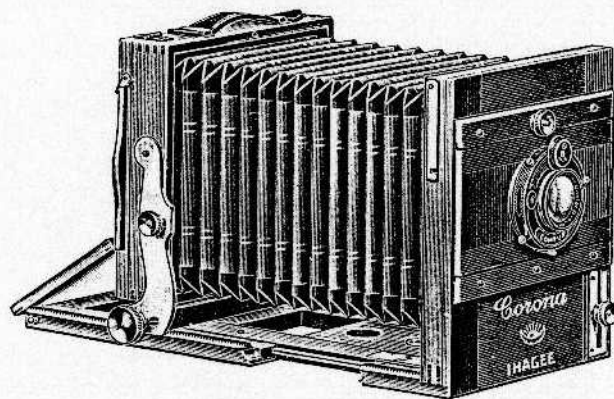
By the opening of the camera  
the lens is automatically focussed for the infinity.  
The apparatus is therefore on opening,  
immediately ready for exposure

The body of camera is covered with genuine leather. Leather bellows. Baseboard black enamelled. Nickel fittings. Focusing screen with light hood. Wire finder and brilliant finder. Patent release. Iris diaphragms. Tripod nut. 3 metal slides

L e n s		With shutter for time and instantaneous $\frac{1}{25}$ — $\frac{1}{100}$ sec.		Compur shutter for time and instantaneous $\frac{1}{250}$ — $\frac{1}{500}$ sec.	
		No.	Tel.-word	No.	Tel.-word
Anastigmat Trioplan	1:6,8	2701 v	Kleopatra	—	—
Double anastigmat Veraplan	1:5,4	—	—	2703 c	Pythia
Double anastigmat Veraplan	1:4,5	—	—	2705 c	Baucis
Zeiss Triotar	1:6,3	—	—	2707 c	Semiramis
Leather case		1700	Hülle	—	—
Extra slide		1010	Mann	—	—
3 metal slides in case		1010 3	Dreimann	—	—
Film pack slide		1028	Kasa	—	—

# Ihagee Travelling Camera "Corona"

Post-card and 10×15 cm,  $\frac{1}{2}$  plate (12×16,5 cm), 13×18 cm and 18×24 cm



The Corona is a master piece  
of wood working

# Ihagee Travelling Camera "Corona"

The camera is built square.

Polished mahogany. Calico bellow with leather-edges.

Lens board can be adjusted high, low and lateral. Brass fittings.

Double base extension. Double, slanting rack and pinion.

Tilting focusing screen frame. Adjusting from for

high and transverse. Tripod bush. Three

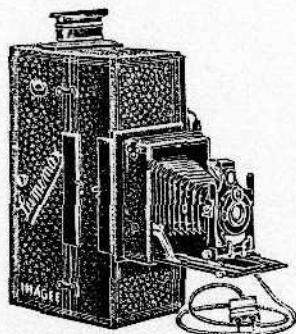
double wooden slides with

aluminium shovers.

L e n s	Compur shutter		Compur shutter	
	No.	Tel.-word	No.	Tel.-word
	Size of picture post-card and 10×15 cm		Size of picture $\frac{1}{2}$ plate (12×16,5 cm)	
Without optic and shutter	750	Kolonne	760	Koralle
Double anast.Veraplan 1 : 6,8	751	Kettledrum	761	Keitum
Double anast.Veraplan 1 : 5,4	752	Kriterium	762	Kristallum
Double anast.Veraplan 1 : 4,5	753	Konsum	763	Kollegium
Extra lens board	755	Exkurs	765	Express
Double wooden slide	1003 h/2	Holzbau	1004 h/2	Holzhaus
Sailcloth pocket	—	Segelboot	—	—
Sailcloth box	—	—	—	Segeltuch
	Size of pictures (13×18 cm)		Size of pictures 18×24 cm	
Without optic and shutter	770	Komplott	780	Komplex
Double anast.Veraplan 1 : 6,8	771	Kerschbaum	781	Kerarium
Double anast.Veraplan 1 : 5,4	772	Kioum	782	Kritikum
Double anast.Veraplan 1 : 4,5	773	Kolloquium	785	Kuriosum
Extra lens board	775	Extrakt	785	Extrem
Double wooden slide	1005 h/2	Holzrad	1006 h/2	Holzwerk
Sailcloth-box	1757	Segelschiff	1760	Segelstoff

# Half-Watt Heavy Current "Lumimax"

Protected by several patents



Representants  
a revolution in the field of  
enlargement technics

The manufacture of the Lumimax apparatus is the last link in the chain of experiments and tests which were made to create an enlargement apparatus without the troublesome effect of the condenser. The Lumimax apparatus works in conjunction with one's own camera, which is placed before the Lumimax and the lens can be used for the enlargement whereby lifelike perspectives and excellent profoundness will be obtained. Enlarging after the Lumimax method is very simple work and excludes the possibility of failure. The Lumimax apparatus can be connected to any electric current. The lamps have to be chosen for the kind of current available. It is to be recommended to use half-watt lamps of 100 watt in spherical form of clear glass without point. Our Lumimax apparatus have been recently fitted with a picture holder, enabling the operator to project and enlarge positives and paper negatives. The Lumimax can be screwed on to tripod, but is very advisable to employ an enlargement frame, as shown on page 33.

## Apparatus complete with Two-Pin Wall Plug but without lamps

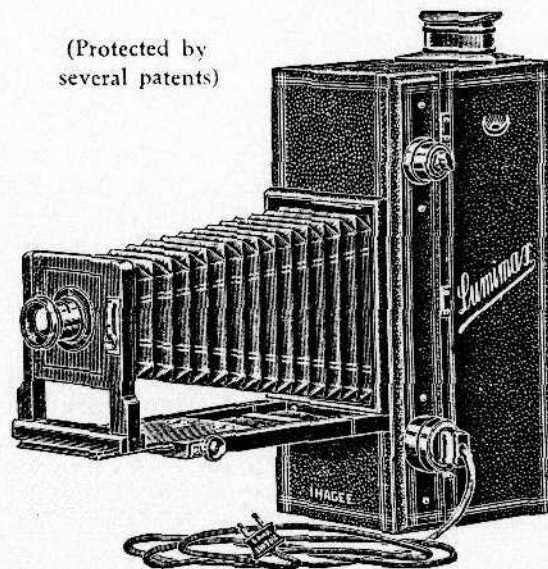
- |          |                       |                                  |                   |
|----------|-----------------------|----------------------------------|-------------------|
| No. 2001 | Lumimax for apparatus | 1 3/4 x 2 5/16 ins. (4,5 x 6 cm) | Tel.-word: Luchs  |
| No. 2003 | Lumimax for apparatus | 2 1/2 x 3 1/2 ins. (6,5 x 9 cm)  | Tel.-word: Ludwig |
| No. 2005 | Lumimax for apparatus | 1/4 plate and 9 x 12 cm          | Tel.-word: Luft   |
| No. 2007 | Lumimax for apparatus | post-card and 10 x 15 cm         | Tel.-word: Luise  |
| No. 2009 | Lumimax for apparatus | 1/2 plate and 13 x 18 cm         | Tel.-word: Luxus  |

Accessories: 2 AEG. Nitra Ball Lamps

Price according to voltage and luminous intensity

# Half-Watt Professional Lumimax

(Protected by  
several patents)



Profoundness of depth. Perspective true to nature. Complete utilization of the intensity of light without the use of a condenser.

By means of the Lumimax enlargements will be obtained of unsurpassed softness and harmonious graduation which are just like directly taken pictures. The Lumimax is, therefore, the favorite of the prominent professional, of the scientist and the serious amateur and art photographer. The professional Lumimax is fitted with rack and pinion and bellow, enabling the operator to fasten the lens of his camera at the front of the lens board of the Lumimax apparatus and to employ lenses of varying focal length, owing to the long extension of the bellow. The professional Lumimax 1/2 plate has arrangements for 2, the whole plate apparatus for 4 half-watt lamps. By using corresponding carriers all sorts of small negatives can be put in.

- |          |  |                   |
|----------|--|-------------------|
| No. 2021 | Professional Lumimax 1/2 plate (12 x 16,5 cm and 13 x 18 cm) compl., with two-pin wall plug, but without lamps   | Tel.-word: Lupe   |
| No. 2022 | Extra lens board for it  | Tel.-word: Luzern |
| No. 2023 | Professional Lumimax 1/1 plate (16,5 x 21,5 cm and 18 x 24 cm) compl., with two-pin wall plug, but without lamps | Tel.-word: Lunch  |
| No. 2024 | Extra lens board for it  | Tel.-word: Lunge  |

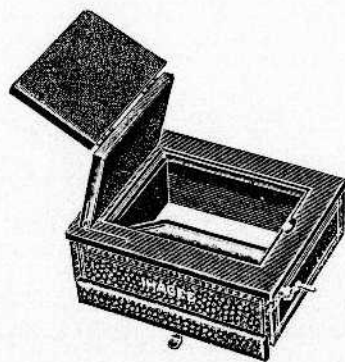
## Universal Lens Flanges

Can be recommended to facilitate the easy interchange of lenses of the Professional Lumimax apparatus

- |  |          |                   |
|--|----------|-------------------|
| Size I for 1/2 plate (12 x 16,5 cm) span 15-60 mm    | No. 2027 | Tel.-word: Obacht |
| Size II for 1/1 plate (16,5 x 21,5 cm) span 25-80 mm | No. 2028 | Tel.-word: Obhut  |



# Lumimax-Accessories



## Lumimax Printer

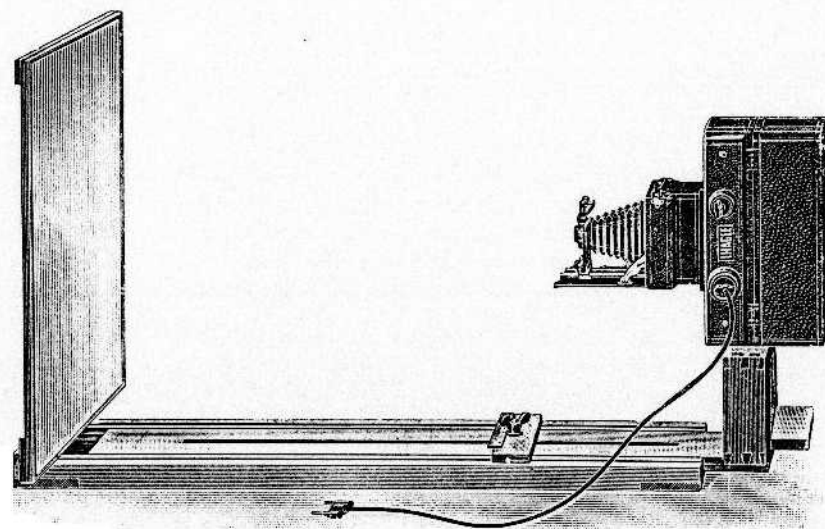
- No. 2030 Printing attachment for size of plate  $1\frac{3}{4} \times 2\frac{5}{16}$  ins. up to  $\frac{1}{2}$  plate or  $9 \times 12$  cm Tel.-word: Kodex  
 No. 2031 Printing attachment for size of plate p.c. or  $10 \times 15$  cm Tel.-word: Koffer  
 No. 2032 Printing attachment for size of  $\frac{1}{2}$  plate or  $13 \times 18$  cm Tel.-word: Kohle

The Lumimax-printer can be placed on the enlarging apparatus Lumimax also for kontakt-prints as a rapid-printer

# Lumimax-Carriers

No. 2010	$4,5 \times 6$	$: 6,5 \times 9$	cm	Tel.-word: Einband
No. 2010a	$4,5 \times 6$	$: 10 \times 15$	cm	Tel.-word: Einheit
No. 2011	$4,5 \times 6$	$: 9 \times 12$	cm	Tel.-word: Einzahl
No. 2011a	$6,5 \times 9$	$: 8 \times 10,5$	cm	Tel.-word: Eintracht
No. 2012	$6,5 \times 9$	$: 9 \times 12$	cm	Tel.-word: Einblick
No. 2013	$6,5 \times 9$	$: 10 \times 15$	cm	Tel.-word: Einbruch
No. 2013a	$8 \times 10,5$	$: 10 \times 15$	cm	Tel.-word: Einwand
No. 2014	$9 \times 12$	$: 10 \times 15$	cm	Tel.-word: Eindruck
No. 2014a	$8\frac{1}{4} \times 12$	$: 13 \times 18$	cm	Tel.-word: Einschlaf
No. 2015	$9 \times 12$	$: 15 \times 18$	cm	Tel.-word: Einfall
No. 2016	$10 \times 15$	$: 15 \times 18$	cm	Tel.-word: Einfluß
No. 2016a	$8 \times 10,5$	$: 12 \times 16,5$	cm	Tel.-word: Einfahrt
No. 2017	$8\frac{1}{4} \times 12$	$: 12 \times 16,5$	cm	Tel.-word: Einfuhr
No. 2018	$12 \times 16,5$	$: 13 \times 18$	cm	Tel.-word: Eingang
No. 2019	$12 \times 16,5$	$: 18 \times 24$	cm	Tel.-word: Einsicht
No. 2020	$15 \times 18$	$: 18 \times 24$	cm	Tel.-word: Einkehr

# Lumimax Enlargement Frame

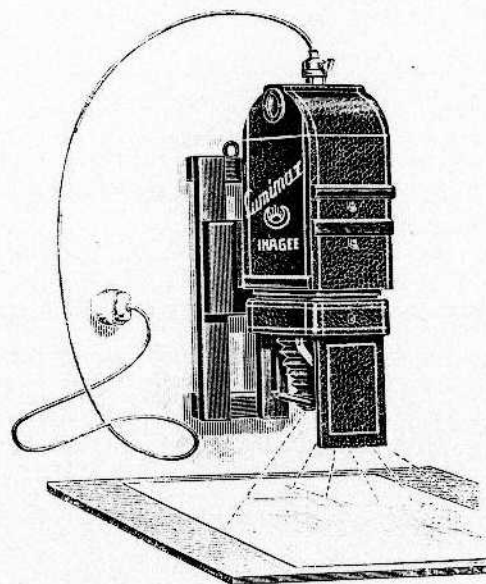


The frame can be extended any distance up to 1.90 m or be completely folded and guarantees at any time an accurate parallel position of the apparatus to the bromide paper. The screen is amply dimensioned and suffices for ordinary enlargements. If abnormal sizes are wanted, the screen can be folded and the enlargement is thrown on the wall.

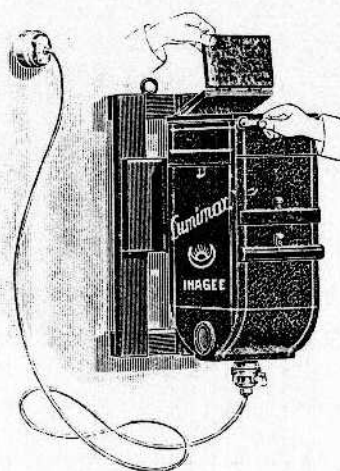
- No. 2025 Lumimax Enlargement Frame, Size I, with screen  $21\frac{1}{8} \times 26\frac{3}{4}$  ins. ( $54 \times 68$  cm) Tel.-word: Gestalt  
 No. 2026 Lumimax Enlargement Frame, Size II, specially for professional purposes, with screen  $31\frac{1}{2} \times 31\frac{1}{2}$  ins. ( $80 \times 80$  cm) Tel.-word: Gestein

Lumimax Special Prospectus on application!

# Enlarging apparatus "Simplex Lumimax"



Picture 1



By the picture 2 you will see the effect as a rapid-printer-apparatus

# Enlarging apparatus "Simplex Lumimax"

Besides the Lumimax we manufacture the Simplex Lumimax. It is to be recommended to all amateurs, which renouncing to advantages of the indirect lighting and the possibility to enlarge paper-negatives, which want an apparatus well working and worth the money. You may use it as an enlarging apparatus as well as a diminution-apparatus also. The effect will be seen by picture 1. We recommend to this the frame, which is fixed 40 cm over the table to the wall of the dark-room

The Simplex Lumimax is constructed to cameras with simple and double extension in the size  $1\frac{3}{4} \times 2\frac{5}{16}$  ins. (4,5  $\times$  6 cm),  $2\frac{1}{2} \times 3\frac{1}{2}$  ins. (6,5  $\times$  9 cm),  $\frac{1}{4}$  plate and 9  $\times$  12 cm, post-card and 10  $\times$  15 cm and may be annexed to each current, to which all lamps of clear glass without point of respective volt-force and at least 60 watts are proper

As with "Lumimax" as with "Simplex Lumimax" the printer may be used successfully

Simplex Lumimax: $1\frac{3}{4} \times 2\frac{5}{16}$ ins. (4,5 $\times$ 6 cm)	No. 2041	Tel.-word: Lumen
Simplex Lumimax: $2\frac{1}{2} \times 3\frac{1}{2}$ ins. (6,5 $\times$ 9 cm)	No. 2043	Tel.-word: Lurd
Simplex Lumimax: $\frac{1}{4}$ plate and 9 $\times$ 12 cm	No. 2045	Tel.-word: Lucifer
Simplex Lumimax: post-card and 10 $\times$ 15 cm	No. 2047	Tel.-word: Luna

Simplex Lumimax=Frame for all sizes	No. 2050	Tel.-word: Gebrauch
Printer up to $\frac{1}{4}$ plate and 9 $\times$ 12 cm	No. 2030	Tel.-word: Kodex
Printer for post-card and 10 $\times$ 15 cm	No. 2031	Tel.-word: Koffer

# The Ihagee Set



An optical Miracle!

The Ihagee Set transforms any camera into a universal instrument. It consists of the additional lens holder which is attached to the hood of the lens by pressing together two springs, and of 4 additional lenses: a) wide angle lens, b) portrait lens, c) reproduction lens and d) telephotolens. It is a distinguishing feature of the Ihagee lenses that pictures remain beautifully plane in spite of the change of the focal length. Ihagee Set are made in three sizes. Size I has a lens diameter of 31 mm and can be used for all sorts of hand cameras. Size II has a diameter of 40 mm and can be used for  $\frac{1}{2}$  plate cameras of  $13 \times 18$  cm and for cameras having a very large aperture. Size III has a diameter of 2 inch. and enables the professional to vary the focal lengths of the lenses on hand in a most extraordinary manner. This size can also be recommended for projectors, epidiastopes, and cinematographs in order to change the enlargement at will during a performance or demonstration.

Each right Ihagee Set is furnished with our trade-mark and the firm Ihagee. Besides each lens has our trade-mark on the packing.

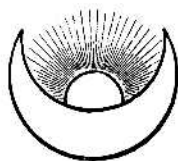
We beg not to confound this set with other sets. Please always pay attention to our mark Ihagee and to our trade-mark!

Size I	Holder with lens in case	No. 1201	Tel.-word: Verband
Size II	Holder with lens in case	No. 1202	Tel.-word: Verbot
Size III	Holder with lens in case	No. 1203	Tel.-word: Verbrauch

Designation	Size I		Size II		Size III	
	No.	Tel.-word	No.	Tel.-word	No.	Tel.-word
Single Ihagee lens	1225	Verdacht	1226	Verkauf	1227	Verlag
Single Ihagee holder	1250	Verdeck	1251	Verkehr	1252	Verliess
Yellow screens fitting into above holders (light, medium, dark)	1275	Verdienst	1276	[zung Verkürz	1277	Verlust

Ihagee Set special prospectus on application!





\*

MEDAL OF GOLD

International exhibition for photo-  
graphy, optics and cinematography

TORINO 1923

\*