

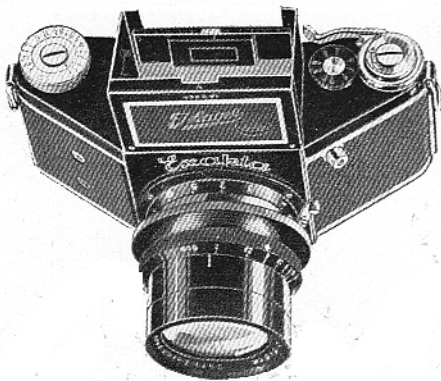
Price List effective May 1st, 1937

THE
V.P. 4 x 6.5 cm

Exakta



*Reflex Camera
of Universal Usefulness*



INDEX

Distributors	Back Page
Eveready Cases	9
Exakta B	4
Exakta Book	9
Exakta, Jr.	4
Extension Tubes	8
Filters	9
Finger Release Knob	5
Focusing Hood Extension	5
Focusing Pin	5
Interchangeable Lenses	6 & 7
Lens Shades	9
Luminax B Enlarger	11
Microscope Adapter	10
Neck Strap	10
Night Exakta	4
Plateback Exakta	5
Projection Luminax Enlarger	11
Reproduction Stand	10
Synchronizer for Flashbulbs	9
Supplementary Lenses	8

Effective May 1st, 1937
Prices are subject to change without further notice

Ihagee

EXAKTA

Reflex Cameras



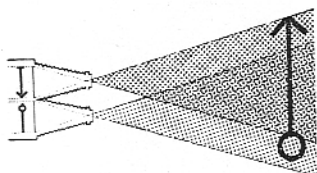
Precision and beautiful appearance combined with the finest design make Exakta cameras the choice of discriminating amateurs who refuse to own anything but the best. Trapezoidal in shape, covered with the finest leather with chromium trimming, the appearance is in keeping with its quality.

The Exakta is a reflecting camera in which the visual image is formed by the taking lens, eliminating all errors of parallax. The focusing screen has a self erecting light hood which is fitted with a focusing magnifier for fine focusing. A reflecting panel is set in the hood so that the camera may be focused at eye level if desired, or an open frame sight used for action follow shots.

Film size No. 127 is used, the negatives being full vest pocket size. This provides a negative amply large for flawless enlarging with a camera comparable in size to those making the smallest negatives. The eight exposure roll eliminates the necessity for making a burdensome number of exposures before development, yet provides sufficient sensitive material for ordinary purposes. The mechanical design is such that double exposures are impossible.

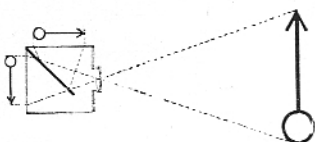
GET WHAT YOU SEE!

THE PROBLEM OF PARALLAX



THIS IS PARALLAX. No matter how carefully matched or how close together the finder and taking lenses may be, there is a difference in their fields of view. The finder cannot show you **exactly** what you are taking, so you get pictures with heads missing or feet cut off.

NO PARALLAX HERE. In the Exakta the image seen by the eye is the actual photographic image, so that you always see just exactly what you will get before you make the exposure.



THE EXAKTA HAS NO PARALLAX

EXAKTA JUNIOR

The Junior model has the characteristic features of the Model B except that the shutter has automatic speeds limited to 1/25 to 1/500 and has no delayed action.

9150-M Ihagee Anastigmat F/4.5—7.5 cm.....\$55.00
9150-P Ihagee Anastigmat F/3.5—7.5 cm..... 60.00

EXAKTA MODEL B

Equipped with self capping focal plane shutter having automatic speeds from 12 seconds to 1/1000 second by direct release and from 6 seconds to 1/1000 second by delayed action release.

BLACK

B-8150-BR With Exaktar F/3.5—7.5 cm.....\$ 90.00
B-8150-PR With Primotar F/3.5—7.5 cm..... 100.00
B-8150-Q With Zeiss Tessar F/3.5—7 cm..... 110.00
B-8150-E With Zeiss Tessar F/2.8—7.5 cm..... 125.00

CHROME

CHR-B-8150-BR With Exakta F/3.5—7.5 cm.....\$100.00
CHR-B-8150-PR With Primotar F/3.5—7.5 cm..... 110.00
CHR-B-8150-Q With Zeiss Tessar F/3.5—7 cm..... 120.00
CHR-B-8150-E With Zeiss Tessar F/2.8—7.5 cm..... 135.00

NIGHT EXAKTA—Model B

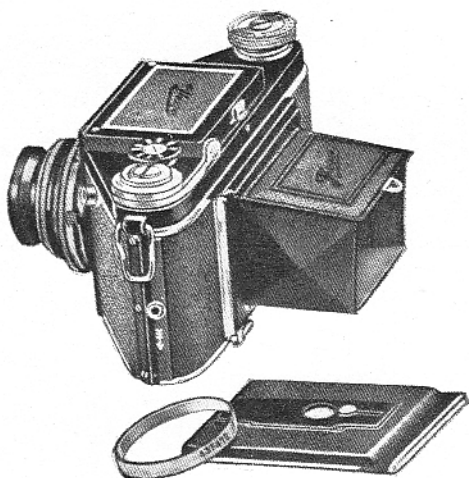
BLACK

B-8150-LR With Zeiss Biotar F/2—8 cm.....\$225.00
B-8150-PL With Meyer Primoplan F/1.9—8 cm..... 185.00

CHROME

CHR-B-8150-LR With Zeiss Biotar F/2—8 cm.....\$235.00
CHR-B-8150-PL With Meyer Primoplan F/1.9—8 cm. 195.00

EXAKTA WITH PLATEBACK Model C



This is the same as the Exakta Model B except that it is equipped with a special back permitting the use of glass plates or cut film as well as rollfilm. (The reflex focusing cannot be used with the plateback, a special ground glass panel being provided for focusing.)

C-8150-BR	With Exaktar F/3.5—7.5 cm.....	\$102.00
C-8150-PR	With Primotar F/3.5—7.5 cm.....	112.00
C-8150-Q	With Zeiss Tessar F/3.5—7 cm.....	122.00
C-8150-E	With Zeiss Tessar F/2.8—7.5 cm.....	137.00

(Plate Exakta with Chrome finish, \$10.00 additional)

Night Exaktas cannot be supplied with the plateback.

Existing Exaktas may be converted to the plateback model at the factory only by returning to Dresden, through the Amer. Distributor. Delivery time 10 weeks, cost \$40.00.

Accessories for Plateback Exaktas

7141 —Extra plateholders	\$.50
7230 —Filmpack adapter	2.25

FOCUSING PIN

9661 —Extension rod for operating the focusing mount more easily. The Exakta mount has a threaded hole to take the focusing pin.....	\$.65
---	---------------

FINGER RELEASE KNOB

9662 —Provides a larger pressure area so that the Exakta may be operated even when wearing heavy gloves.....	\$.50
---	---------------

LEATHER FOCUSING HOOD EXTENSION

To fit over the metal focusing hood to completely block extraneous light.

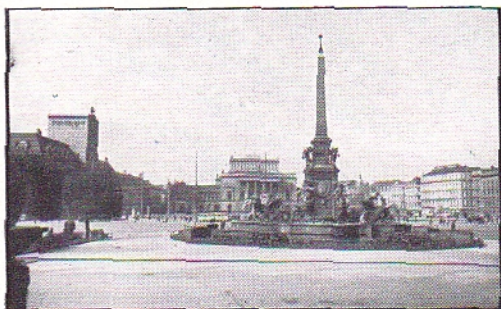
9653 —Regular focusing hood extension.....	\$1.50
9657 —12 cm. extension fitted with large focusing magnifier	4.00

INTERCHANGEABLE EXTRA LENSES

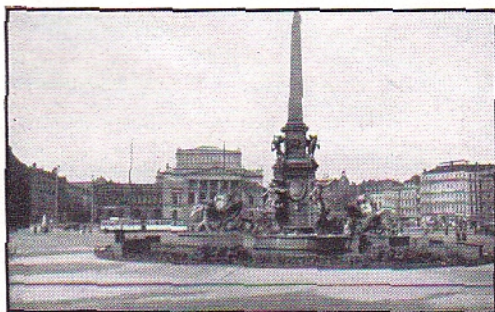
These lenses fit the socket of the Exakta interchangeably with the standard lens, giving a greatly increased scope of usefulness to the camera.

With the two Tele-Tessars of 18 and 25 cm. focal length some vignetting appears on the narrow sides of the picture, which, however, does not amount to much, as in a tele-exposure the main subject is in the centre of the picture.

Seven Exakta Pictures taken from the same position

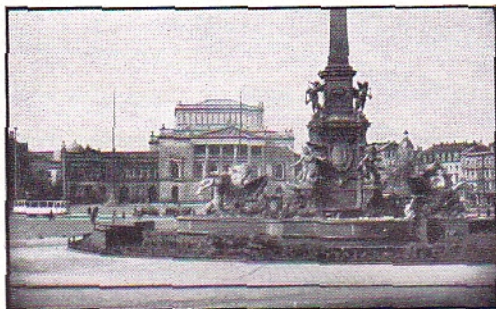


9414—Wide Angle Tessar F/8—5.5 cm..... 75.00
Foc. length 5.5 cm., View-angle 66°



STANDARD LENS

Foc. length 7.5 cm., View-angle 55°



9413—Ihagee Anastigmat F/4.5, 10.5—11 cm..... 30.00
Foc. length 10.5—11 cm., View-angle 38°



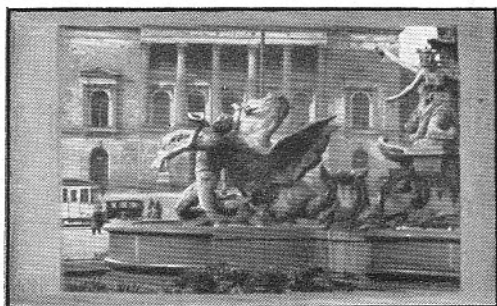
9411—Tele Tessar F/6.3—12 cm. with finder mask **\$100.00**
 F/6.3, Foc. length 12 cm., View-angle 34°



9412—Tele Megor F/5.5—15 cm. with finder mask **70.00**
9417—Leather case for Tele Megor..... **2.00**
 Foc. length 15 cm., View-angle 28°



9415—Tele Tessar F/6.3—18 cm. with finder mask.. **140.00**
 Foc. length 18 cm., View-angle 24°



9416—Tele Tessar F/6.3—25 cm. with finder mask **175.00**
 Foc. length 25 cm., View-angle 17°

SUPPLEMENTARY LENSES

SUPPLEMENTARY LENSES FOR CLOSEUP

3641-M	—For Exakta Junior F/4.5	\$3.00
3641-P	—For Exakta Junior F/3.5	3.00
3641-BR	—For Exaktar F/3.5	3.00
3641-PR	—For Primotar F/3.5	3.00
3641-Q	—For Tessar F/3.5	3.00
3642-E	—For Tessar F/2.8	4.00
3643-LR	—For Biotar F/2	5.00
3643-PL	—For Primoplan F/1.9	5.00

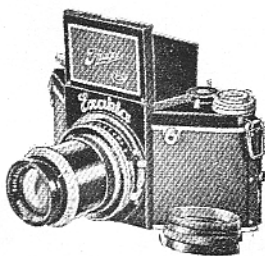
SUPPLEMENTARY LENSES FOR DISTANT VIEWS

8431	—For all 7.5 cm. lenses except the Tessar F/2.8, including adapter	6.50
8432	—For Tessar F/2.8, 7.5 cm., including tubular adapter	7.50
8433	—For Biotar F/2 (LR) or Primoplan F/1.9 (PL), including adapter	6.00

BIOTAR AS TELEPHOTO LENS

The front member of Biotar F/2 can be used alone and yields a focal length of 155 mm. at an aperture of F/5 requiring approximately stopping of the total lens to F/2.8. An extension tube is required.
No. 5801 Extension tube for Biotar element..... \$4.50

EXTENSION TUBES



B. A.

Extension tubes serve to increase the distance between the lens and the focal plane, thus making it possible to make photographs of objects extremely near the camera, using the regular camera lens. Both tubes may be used together to obtain natural size images.

8841	—Extension tube A, 1.5 cm. length (not for <i>Night Exaktas</i>)	4.50
8842	—Extension tube B, 3 cm. length (for all <i>Exaktas</i>)	4.50

Close-ups with Exakta Extension Tubes

(Explained with respect to 2 lenses.) The table shows how closely one may approach the object. The two measurements indicate the focusing distances, measured from the object to the plane of the film. The greater measurement requires focussing by focussing mount to infinity, the smaller one focussing to shortest distance (i.e., the focussing mount is fully turned out).

Lens	w. suppl. lens for close-ups	w. Tube A	w. Tubes B	w. Tube A & B
Exaktar F/3.5	21—16 ins.	23—17 ins.	14—13 ins.	12 ³ / ₄ —12 ³ / ₈ ins.
Biotar F/2	64—23 ins.	not usable	15—14 ins.	13 ³ / ₄ —13 ¹ / ₄ ins.

Lens	w. Tubes A & B	w. suppl. lens f. close-ups		
		Tube A	Tube B	Tubes A & B
Exaktar F/3.5	12 ³ / ₄ —12 ³ / ₈ ins.	13 ¹ / ₄ —12 ins.	11 ¹ / ₄ —10 ⁷ / ₈ ins.	10 ⁷ / ₈ —10 ¹ / ₂ ins.
Biotar F/2	13 ³ / ₄ —13 ¹ / ₄ ins.	not usable	14—13 ins.	13—12 ⁵ / ₈ ins.

FILTERS

Yellow (Y)

Red (R)

Green (G)

Filters in each size are supplied in three grades, light medium and dark. When ordering state density desired "l", "m" or "d" and color Y, R or G.

- 9651—For Exaktar (BR), Primotar (PR), Tessar F/3.5 (Q), Exakta Jr. F/4.5 (M) and Exakta Jr. F/3.5 (P). When ordering indicate lens by adding code letter to the number.....\$3.00
 9652—For Tessar F/2.8 (E)..... 4.00
 9655—For Biotar F/2 (LR) or Primoplan F/1.9 (PL) 6.00

LENS SHADES

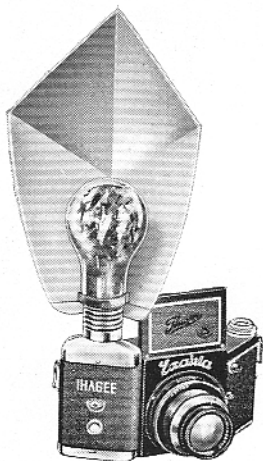
A lens shade is essential when working against the light, but practically every outdoor shot will be of better quality if a sunshade is used regularly.

- 9654-BR For Exaktar F/3.5—7.5 cm. 2.00
 9654-PR For Primotar F/3.5—7.5 cm. 2.00
 9654-Q For Tessar F/3.5—7 cm. 2.00
 9654-E For Tessar F/2.8—7.5 cm. 2.00
 9656-LR For Night Exakta with Biotar F/2 3.00
 9656-PL For Night Exakta with Primoplan F/1.9 3.00

EVEREADY CARRYING CASE

This case provides complete protection to the camera while keeping it ready for instant use.

- 7335 —For all Exaktas except Night Exaktas.....\$7.50
 7335LR—For Night Exaktas 8.50
 7335-C—For Plateback Exaktas 8.50



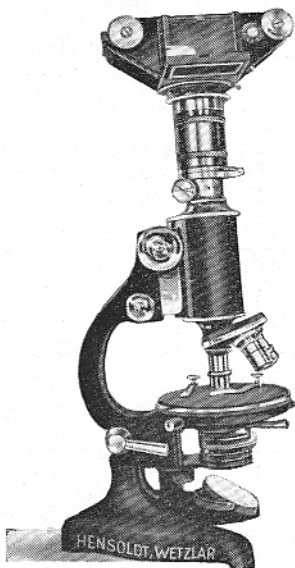
FLASHBULB SYNCHRONIZER

Exakta cameras have built-in synchronizing contacts so that it is only necessary to connect the battery and the bulb socket to the camera to complete the synchronizing circuit.

- 8472—Vacublitz I—Battery case, reflector, socket, and connector 7.00
 8473—Vacublitz II—Complete outfit, Vacublitz I together with extension arm for socket and reflector, extension connectors, clamps to hold extra units and adapter.....12.00
 BAT—Complete Battery set for Vacublitz I or II (for replacement)30

MISCELLANEOUS ACCESSORIES

- Neck Strap, pleated leather cord with carbines.....\$1.75
 Lens Flange for Tessar 2.8 Lens..... 1.50
 Screw Button for Eveready Case..... .50



EXAKTA MICROSCOPE ADAPTER

FOR PHOTOMICROGRAPHS the Exakta is an ideal instrument. Here, too, the focusing by means of a mirror proves to be the most perfect construction for photographic cameras. The Exakta is adapted to the microscope by means of the

EXAKTA MICRO-ADAPTER

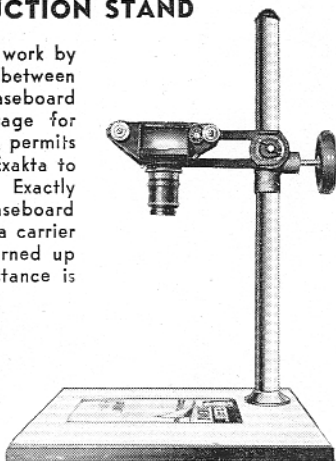
This adapter can be turned over, thus permitting the interchange of the oculars of the microscope and to change the scale of enlargement.

Exakta Micro-Adapter in Case
892530.00

EXAKTA REPRODUCTION STAND

to facilitate reproduction work by ensuring exact parallelism between object and camera. The baseboard serves also as object stage for close-ups. A friction drive permits rapid adjustment of the Exakta to the required distance. Exactly above the center of the baseboard the camera is screwed to a carrier arm which can also be turned up vertically if a greater distance is required.

The use of this frame is possible only with Exakta extension tubes. By means of the Tube A = $1\frac{1}{2}$ cm. an area up to abt. 14×23 cm. can be reproduced.



8810—Exakta Reproduction Stand\$35.00

EXAKTA BOOK

A new hand book on the Exakta, for up-to-date photographers, by Gerhard Isert, translated by P. C. Smethurst, now ready.

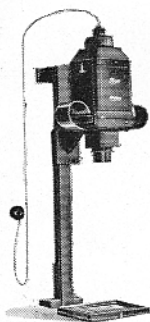
In addition to a description of the special features and technical equipment of the Exakta, the author also gives a very interesting dissertation upon the technics of photography, pictorial points of view, developing, printing and enlarging.

THE EXAKTA BOOK\$1.25

When corresponding with the Service Department of the distributors about uses of the Exakta, Repairs, Accessories, etc., always state Camera Number, Kind of Lens and Lens Number.

V.P. LUMIMAX ENLARGERS

FOR USE WITH THE VEST-POCKET EXAKTA CAMERA LENS



The Lumimax enlargers are of seasoned wood, leather covered and white enamelled inside. The design is such that they may be used vertically or horizontally.

5950-B	Lumimax B, with condenser..	\$17.75
W-5202-G	Wooden Stand	4.00
M-5202-G	Metal Stand	7.50
6500	Baseboard 15x16 1/2"	3.25

COMPLETE V.P. LUMIMAX B

With Wood Stand	\$25.00
With Metal Stand	28.50

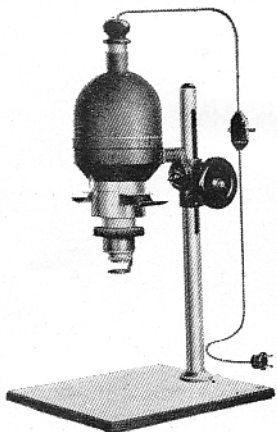
5611 Insert Glass Masks for 3x4, 2.4x3.6 and 4x6.5 cm. 1.80

PROJECTION LUMIMAX ENLARGERS

For Negatives up to 6x6 cm. (2 1/4 x 2 1/4")

The Projection Lumimax is a metal enlarger. A metal lamphouse is supported by a metal post. The lamphouse position is controlled by means of a hand wheel while focusing is accomplished by means of a large disc easily grasped. The lamphouse may be turned to the horizontal position for enlargements of greater scope than permitted by the vertical position.

For enlarging, use 100 Watt opal lamps, for projection, 100 Watt clear projection bulbs and the lamp house extension.



The Baseboard is of Hard Wood, 13x15".

Used as projector with 7.5 Exakta Lens, a screen picture of 3'x4' is obtained at 6' distance.

Projection enlarger Lumimax with stand, baseboard, condenser and 4x6.5 cm. glass mask without lamp,

9700 —Without lens, but with mount for Exakta lens....	\$60.00
9700-PR —with Primotar F/3.5—7.5 cm. with iris.....	80.00
9700-M —with Ihagee Anastigmat F/4.5—7.5 cm.....	70.00
9700-P —with Ihagee Anastigmat F/3.5—7.5 cm.....	77.50

ACCESSORIES FOR PROJ. LUMIMAX

Lamphouse extension for even screen illumination.....	\$4.50
Extra glass masks , 24x36 mm., 3x4 cm., 4.5x6 cm., V.P., or 6x6 cm., in wooden containers, each.....	1.80
9736 —Sliding lantern slide carrier, when using enlarger as a lantern slide projector, 4.5x6 cm. and 5x5 cm., each	1.70
9735 —Glass pressure frame for single films.....	1.50
Extension tube for reducing 6x6 negatives to 5x5 cm. lantern slides, applied between enlarger and lens.....	6.00
Universal paper holder for the enlarger. Bookform with sliding marginal masks. Up to 8x10"	7.00

V.P. EXAKTA, for 4x6.5 cm. film

KINE EXAKTA, for 35 mm. film

EXAKTA ACCESSORIES and

EXAKTA ENLARGERS

Manufactured by

IHAGEE KAMERAWERK, DRESDEN



Exclusive U. S. A. Importers
and

Distributors East of the Rocky Mountains

PHOTO MARKETING CORP.

10 West 33rd Street, New York, N. Y.



Distributors West of the Rocky Mountains

Arizona, California, Colorado, Idaho, Montana, New Mexico,
Nevada, Oregon, Washington, Wyoming

BELL & HOWELL CO.

716 North La Brea Ave., Los Angeles, Calif.



SOLD BY:

