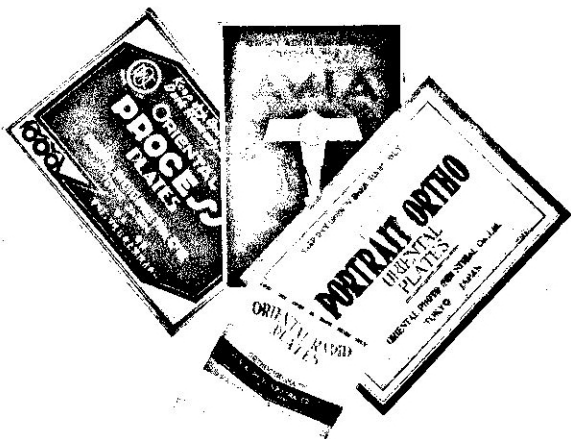


Oriental DRY PLATES

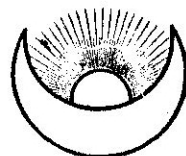
Special Portrait, speed K 50, for general studio use.
Portrait Ortho, speed K 60, for high class studio use.
Rapid Plate, speed K 70, for general out-door press work, home Portraiture.
Avia Plate, speed K 80, for extra high speed work.
Oriental Process Plate for copying drawings when an extreme degree of contrast is required.



Oriental Photo Industrial Co., Ltd.

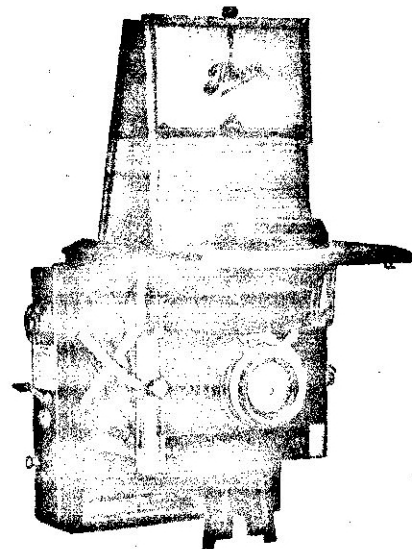
Established 1919.
Capital: Yen 1,500,000
Cables: "Opic."

Head Office: Ochiai, Tokyo.
Tokyo Branch, Nishiginza, Tokyo.
Osaka Branch: Andojihashidor
Osaka.



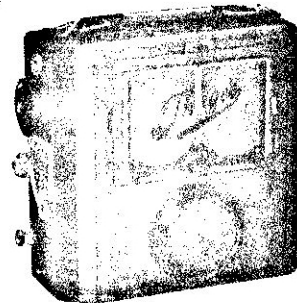
Trade Mark.

Ihagee SPECIALITY CAMERAS for Sports, Press and Advanced Amateurs.



The Ihagee Patent Folding Reflex is only slightly larger than an ordinary folding-camera. It can be opened ready for exposure with one movement and at the same time is automatically focussed for "infinity." The shutter (covered by several patents), giving speed from 1/5 to 1/1000 second, has a covered mechanism, a self-capping blind and works entirely without a jar. The mirror rests on a base, thus ensuring that it maintains an angle of 45°. Covered with best morocco leather and fitted with leather bellows, the Ihagee Patent Folding Reflex is an instrument of the very highest class, absolutely rigid, when extended. It is beautifully finished and of elegant appearance.

Equipment: 3 metal slides covered with leather in leather-case. Film pack adapter covered with leather. Shoulder strap. Patent release. Wire view-finder with sight.



Size	6 1/2 x 9 cm. (2 1/2 x 3 1/2 ins)	9 x 12 cm. (3 1/2 x 4 3/4 ins)	10 x 15 cm. (postcard) 16 5/8 ins.
Extension	12 cm.	15 cm.	16 5/8 cm.
Ihagee Trioplan F/3.5	£ s. d. — — 0	£ s. d. 39 10 0	£ s. d. — — —
Hugo Meyer Double Anast.	29 5 0	35 10 0	43 15 0
Veraplan F. 3.5	38 0 0	45 0 0	52 15 0
Meyer Plasmat F/4.5	35 5 0	40 17 6	49 17 6
Zetas Tessar F/4.5	35 5 0	40 17 6	49 17 6

6 1/2 x 9 cm. and 9 x 12 cm. sizes can be supplied with revolving back at a small extra cost.

Sole Agents for Great Britain and Ireland
GARNER & JONES, Ltd., Polebrook House, Golden Square, London, W. 1
who will send a complete catalogue on request.

Ihagee

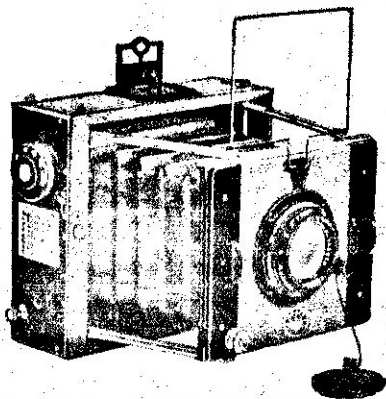
SPORT CAMERA

For plates and film-packs 9 x 12 cm. (1-plate).

The best camera for sport and press photographs! Simple in construction. Reliable in action.

One touch and the camera is ready for work and sharply focused at infinity. Close focusing is done by the focusing mount of the lens.

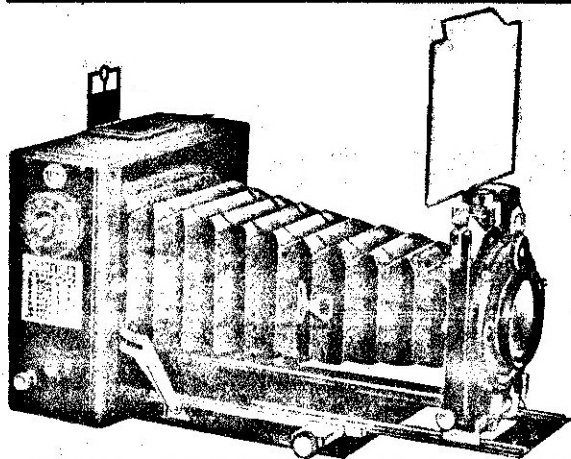
Body covered with real leather. Metal lens panel with rising movement. Focal-plane shutter for time, "bulb" and instantaneous exposures of $\frac{1}{8}$ - $\frac{1}{250}$ second. Self-capping blind works without vibration. Direct vision-finder with sight. 3 metal slides in case. Tripod sockets.



No.	Extension 15 cm.	Prices.
		£ s. d.
1820 M.	Ihagee Anastigmat F/4.5 ...	16 2 6
1820 P.	Ihagee Trioplan F/3.5 ...	23 5 0
1820 T.	Hugo Meyer Double-Anas. Veraplan F/4.5 ...	19 10 0
1820 Y.	Hugo Meyer Plasmat F/4.5 ...	28 15 0
1820 Z.	Zeiss Tessar F/4.5 ...	24 17 6
1820 O.	Zeiss Tessar F/3.5 ...	32 7 6

Focal Plane Duplex

A horizontal model with double extension. Fitted with Compur Shutter as well as Ihagee Patent Focal Plane, giving a combined range of speeds from 1 second to $\frac{1}{1000}$ of a second.



	(2½ x 3½ ins.)	9 x 12 cm. (1-plate)
	£ s. d.	£ s. d.
Ihagee Anastigmat F/4.5 ...	14 15 0	16 17 6
Ihagee Trioplan F/3.5 ...	17 15 0	21 10 0
Meyer Double Anas. Veraplan F/4.5 ...	16 0 0	19 10 0
Zeiss Tessar F/4.5 ...	16 42 6	19 5 0
Zeiss Tessar F/3.5 ...	22 5 0	27 5 0

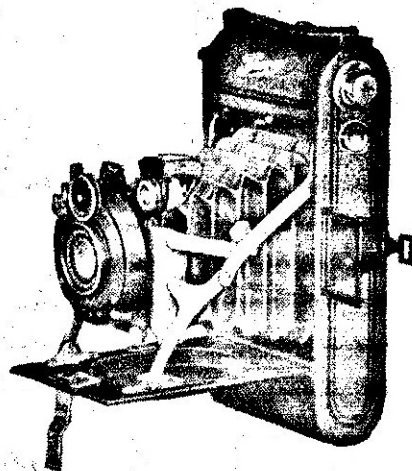
Ihagee

AUTO. ULTRIX No. 2860

For Roll Films, 3½ x 2½ in. A newly designed model that opens automatically on pressing a button and brings the lens into focus for infinity. Focussing "close-ups" is provided for by a Helical Mount. Very light and extremely rigid. All aluminium body and nickelled struts. Covered leatherette and leather bellows. Cable release. Brilliant and wire frame finders.

Prices:

Ihagee Anastigmat F/6.3	Zenith Shutter ...	£3 10 0
Ihagee Anastigmat F/4.5	Ibsor Shutter...	£5 12 6
Zeiss Tessar Anastigmat F/4.5 Compur Shutter with Self-Time Release		£9 2 6

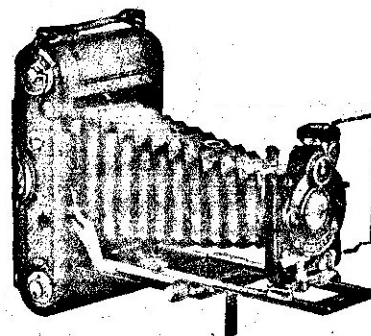


IHAGEE ULTRIX

For roll-film 6 x 9 cm. (2½ x 3½ ins.), 6½ x 11 cm. (2½ x 4½ ins.), 8 x 10½ cm. (3½ x 4½ ins.).

The Ihagee Ultrix is a roll-film camera of the highest class. Its construction combines portability, lightness and rigidity in a remarkable degree while the finish leaves nothing to be desired.

Details: Metal body drawn in one piece of aluminium, covered with real leather. Leather bellows. Aluminium base-board and front black enamelled. Focussing by new radial lever. Brilliant finder with spirit level. Wire view-finder with sight. Patent release. Iris-diaphragm. Tripod bushes.



Prices.	6 x 9 cm. (2½ x 3½ ins.)	6½ x 11 cm. (2½ x 4½ ins.)	8 x 10½ cm. (3½ x 4½ ins.)
	£ s. d.	£ s. d.	£ s. d.
Ihagee Anastigmat F/6.3, in Ibsor shutter	5 5 0	5 15 0	7 0 0
Ihagee Anastigmat F/4.5, in Ibsor shutter	5 17 6	6 15 0	8 0 0
Hugo Meyer Veraplan F/4.5, in self-release Compur shutter ...	—	9 10 0	10 15 0
Zeiss Tessar F/4.5, in self-release Compur shutter ...	9 7 6	10 5 0	11 10 0

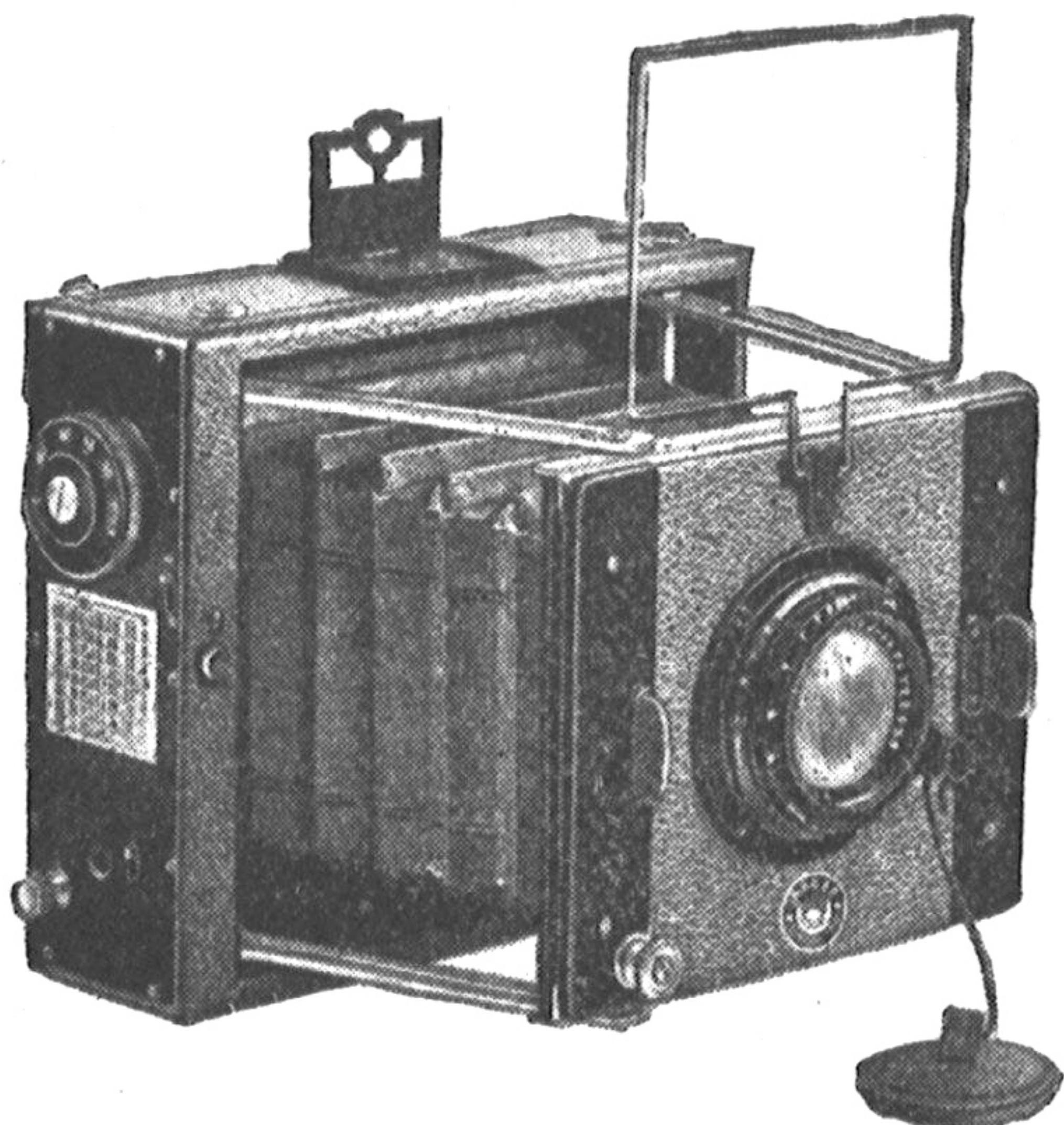
WESTMINSTER SPORTS FOCAL-PLANE CAMERA.

(Sold by the Westminster Photographic Exchange, Ltd., 119, Victoria St., London, S.W. 1.)

This instrument is one to delight the enthusiast—amateur or professional—for sports photography or high speed work of any kind. Though its price is exceedingly moderate for instruments

of the focal-plane Press type, the camera is of admirable design for sports purposes, is of first-rate construction with workmanship and materials that leave nothing to be desired.

The body is of ebonised wood, leather - covered : an all-metal front, with sliding movements upwards, downwards, and crosswise, is connected to the body with four massive spring struts, which give a support firm enough to carry the heaviest of lenses. The shutter is a quick-wind self-capping shutter, with variable tension, seven



widths of slit, and the easiest possible external adjustment. The shutter we should consider pre-eminently suitable for sports uses : it is notably "snappy" in its action even at the slowest adjustment, and considerably faster than its nominal 1/10th sec. From the slowest speed there is a very full range of exposures down to the nominal 1/1,000th, and we should not be surprised to learn that this speed was in fact attained. The action of the shutter is very smooth indeed, and quite without feeling of jar. The blind runs within $\frac{1}{4}$ -in. of the plate, and is correspondingly high in its efficiency. Six single metal dark slides of very nice pattern are supplied. These are of 9×12 cm. size, taking $4\frac{1}{4} \times 3\frac{1}{4}$ -in. plates in metal adapters.

With a Meyer Trioplan $f/4.5$ anastigmat of 6-ins. focal length this camera sells at £15 6s. : with $f/3.5$ Trioplan, £22 7s. : and with $f/4.5$ Zeiss Tessar, £24. Helical focussing mounts are fitted, and a leather case of best quality is an extra at £1 15s.

MORFIELD PRISM BINOCULAR.

(Made by Wray, Ltd., Optical Works, Ashgrove Road, Bromley, Kent.)

A new model of these excellent binoculars has been brought out by Messrs. Wray of power 7 and of 10° field of view, equivalent to a field of 175 yards at 1,000 yards. The glass has central focussing of both eyepieces and also separate adjustment of one eye-piece. It gives an image of first-rate definition and brilliance. The weight of the glass is 1 lb. 12 ozs. Complete with leather lanyard and velvet-lined solid leather sling case the price is £14 10s.

JOHNSON'S ACID HARDENER.

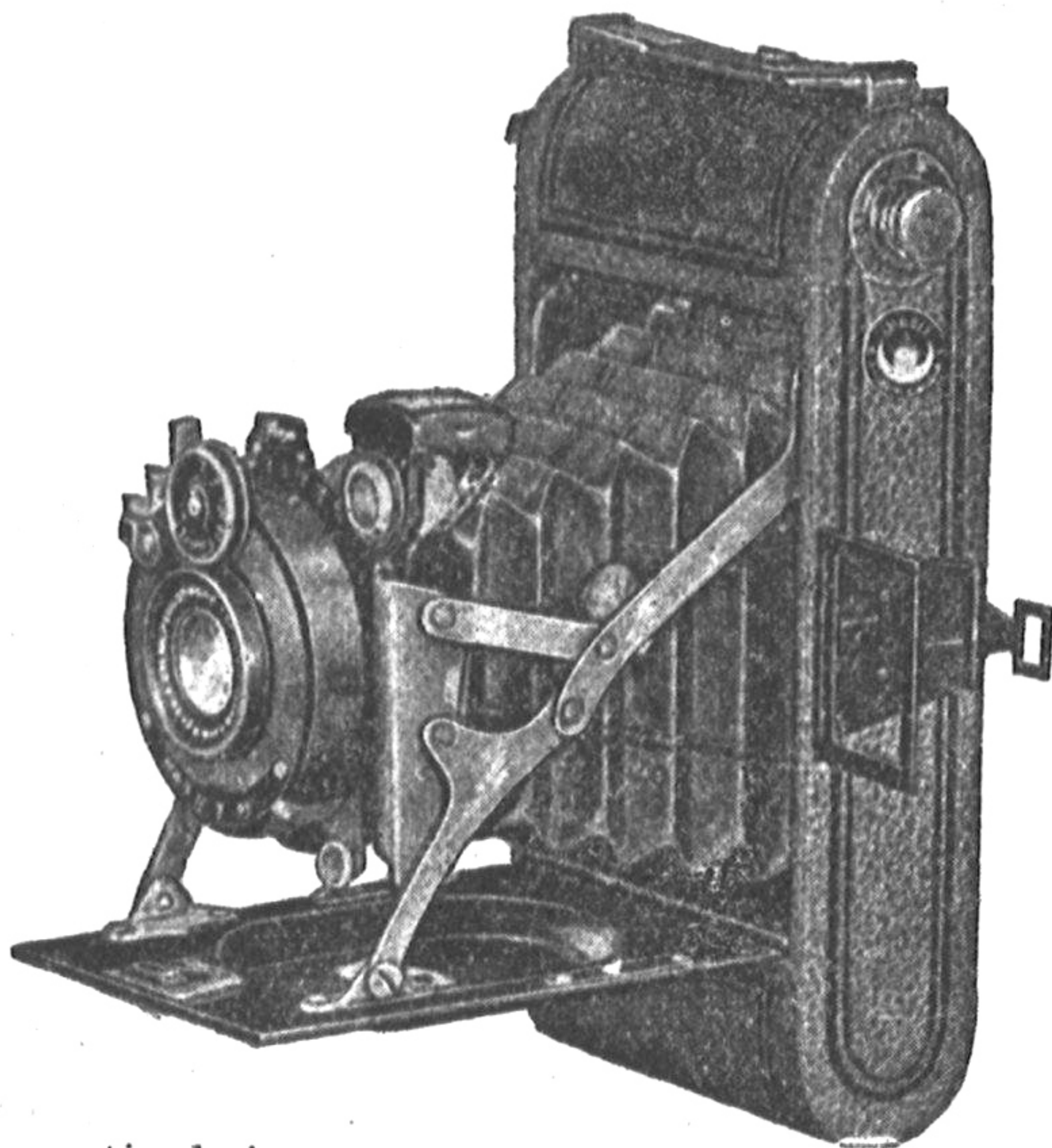
(Made by Johnson & Sons, Ltd., Hendon Way, Hendon, London, N.W. 4.)

The acid hardening solution which Messrs. Johnson supply, so compounded that its addition to a plain solution of hypo forms an acid hardening fixing bath, is now being prepared to an improved formula. In its new form it is specially recommended for D. and P. work, on account of its obviation of fixing bath troubles, its hardening and cleaning action on films and prints, and its prevention of softening and frilling when high temperatures prevail in the developing room. To prepare the fixing bath, one ounce of this hardening fluid is simply added to each 20 ozs. of the ordinary hypo fixing bath.

WESTMINSTER SPRING ROLL-FILM CAMERAS.

(Sold by the Westminster Photographic Exchange, Ltd., 119, Victoria St., London, S.W.1.)

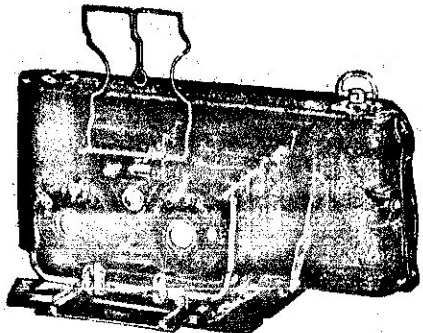
This new model will appeal immensely to the amateur who appreciates instant readiness for use, without the bulk of a box camera. It needs merely a touch on a press-button at the side of



the camera to extend the baseboard and lens support forward ready for exposure, with a gliding movement that will delight those with a mechanical turn of mind. The ingenious spring-actuated mechanism which gives this automatic opening also provides an absolutely rigid support for the lens, and the latter together with the shutter is moved forward for focussing by means of a helical carriage, operated by a lever control. The equipment offered in this delightful and

practical instrument includes brilliant and direct view finders, and a choice of lens and shutter types. There are three models, all taking the popular $3\frac{1}{4} \times 2\frac{1}{4}$ -in. roll-film. The cheapest (£3 10s. 6d.) is fitted with an $f/6.3$ anastigmat lens in a three-speed shutter: for £5 9s. 6d. one can obtain an $f/4.5$ anastigmat in a seven-speed Ibsor shutter, giving speeds from 1 sec. to $1/125$ th, together with time and bulb settings, and a very simple form of delay-action release consisting of a small removable pin which merely needs to be pulled out of the shutter casing by means of a length of black thread: finally, for £9 1s. 6d. the same camera is offered with an $f/4.5$ Zeiss Tessar and Compur Shutter.

Ihagee



ULTRIX STEREO

For roll-films 7½ × 12½ cm. (2¾ × 4¾ ins.) The Ultrix Stereo should make a special appeal to the Stereoscopic worker. In every way a first class instrument, it is beautifully finished and is fitted with every necessary movement.
Details: Camera body covered with genuine leather. Leather bellows. Base-board black enamelled. Front of solid brass, heavily nickelled. Brilliant-finder. Wire view finder. Iris diaphragms. Patent release. Infinity stop with automatic release, when adjusted to near-focus. Tripod bush.
Model V: Automatic shutter series V.
Model C: Compur shutter.

	Model V.	Model C.
	£ s. d.	£ s. d.
Ihagee Anastigmat F/6.8	10 15 0	—
Hugo Meyer Double-Anastigmat Veraplan F/4.5 ...	—	18 5 0
Zeiss Tessar F/6.3 ...	—	23 5 0

IHAGEE ENLARGERS

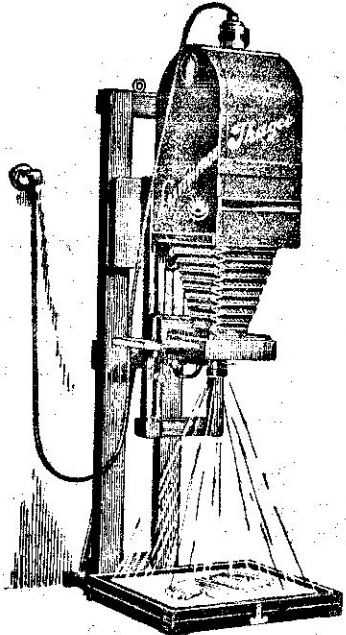
Simplex Model

Are complete with Lamp House and bellows body on Sliding Rails. Rack and pinion for fine focussing. Exposing slide and fitted with Ruby Window. Ruled easel up to 15 × 12 ins. The long extension allows for making reductions.

Prices complete with Flex, Plug and Switch (without lamp).

Fitted with Ihagee Anastigmat F/6.8.

	£ s. d.
For 3½ × 2½ ins. film or plate negatives ...	4 15 0
For ¼ plate film or plate negatives ...	5 0 0
Lamps, 75-watt. extra. Each	4 9

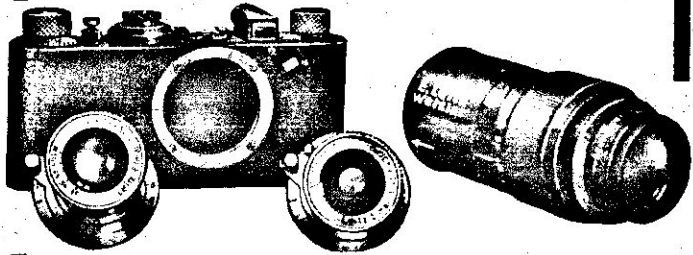


We are only able to illustrate and list here quite a few models of the various cameras made by the celebrated firm IHAGEE. A complete catalogue will be sent on request.

Sole Agents for Great Britain and Ireland

GARNER & JONES, Ltd., Polebrook House, Golden Square, London, W.1

A NEW MODEL OF THE FAMOUS LEITZ LEICA CAMERA



NOW AVAILABLE WITH INTERCHANGEABLE LENSES

This new combination of lenses makes an already exceptional camera more remarkable still. The new outfit comprises the famous Leitz Elmar F/3.5 lens and the Hector F/2.5, both with a focal length of 2"; a special long distance F/4.5 lens, focal length 5½"; and a wide angle F/3.5 lens, focal length 1¼". These lenses fitted to the camera with a quick change flange. Range finder, 3 film chambers and solid leather case, complete the outfit. The original Leica Camera with Elmar F/3.5 lens still obtainable.

LEICA ROLL FILM PROJECTOR with 100 watt, 30 volt lamp for projection of Leica pictures from positive film, or stationary standard Cine film.

LEITZ PHOTO DISTANCE METER gives rapid readings of distances from 3 to 100 ft. Can be used with any camera.

Catalogues of above and of Epidiascopes, Microscopes, Microtomes, Photomicrographic apparatus, Field Glasses, etc. FROM ANY HIGH-CLASS PHOTOGRAPHIC DEALER or post free on application to—

E. LEITZ (LONDON) 20, Mortimer St. LONDON, W.1