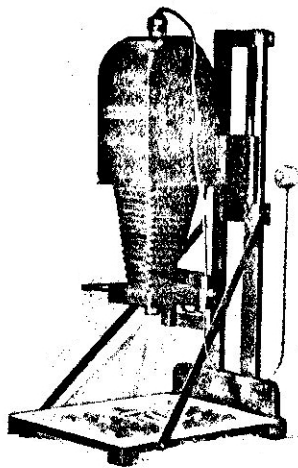


## THE IHAGEE ELECTRIC ENLARGERS



### THE SIMPLEX.

The Simplex Enlargers completely meet the demand for an efficient enlarging apparatus at a low price and entirely independent of daylight. At the same time the optical principle employed renders unnecessary the use of expensive, fragile and heavy condensers. The Simplex enlargers are entirely self-contained and give a brilliant and even illumination. They can be used equally well in a vertical or horizontal position. The easel fitted will take Bromide paper up to

15 x 12ins. The lens fitted is an f/6.3 anastigmat of excellent covering power and the whole apparatus is a complete and workmanlike job, excellently finished and capable of the highest class of work.

#### Prices.

3½ x 2½ ... £4 10 0      4½ x 3½ ... £4 15 0

## PROFESSIONAL ENLARGER

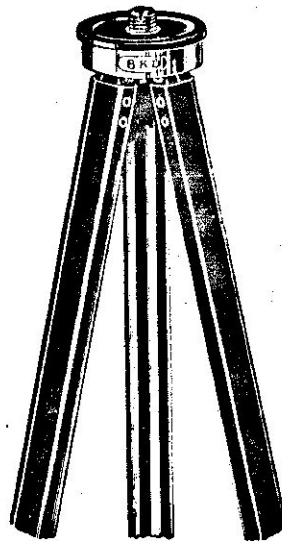
In upright model only for all negatives up to ¼-plate. Double lighting. A splendid investment for the Professional or trade printer.

Price, complete with f/6.3 Anastigmat lens ... £7 10 0

## AT LAST—A REALLY RIGID METAL STAND ACE TRIPODS

*have all the good points of metal stands but none of their faults.*

As rigid as a REALLY GOOD Wood Tripod  
and as light as the lightest Metal Stand



They are perfectly rigid and will support any camera without "whip" or vibration. All tripods have been tested up to 56 lbs. dead weight.

*They are compact.  
They are light.*

The top of the tripod is in one piece, of light metal and the sections are individually renewable.

Any section can be removed and replaced in a few seconds in case of accidental breakage.

## ACE TRIPODS

are beautifully finished. They are built of steel with the top section perfectly enamelled and the sliding sections nickel-plated.

Reversible thread for English or Continental Cameras.

#### PRICES.

3 section	...	...	...	7/6
4 section	...	...	...	8/6
5 section 58 ins. tall	...	...	...	10/6



## ZEISS TELE-TESSAR

F/6.3

### A RAPID TELE-PHOTOGRAPHIC LENS

THE Tele-Tessar is a rapid telephoto objective of entirely new construction, in that the back component is the same size as the front component. This obviates the undesirable diminution of light towards the edge of the field, and has been accomplished without sacrifice of definition.

The new lens will appeal especially to Sports and Press photographers, who are often compelled to operate at a greater distance than they would adopt from choice; and to Portrait and Landscape photographers who desire to obtain improved pictorial perspective.

The new Tele-Tessar produces sharply defined pictures at full aperture.

Focal Length.		Recommended for Plate Sizes.		Price.			
				In Standard "N" Mount.	In sunk "B" Mount.	In focussing "A" Mount.	With "Compur" or "Compound" Shutter.
cm.	in.	cm.	in.	£ s. d.	£ s. d.	£ s. d.	£ s. d.
18	7	9×6	3½×2½	12 5 0	12 15 0	14 5 0	14 10 0
25	10	12×9	4½×3½	15 10 0	16 0 0	17 15 0	18 5 0
32	12½	5×10	6½×4½	20 0 0	20 15 0	23 0 0	23 5 0
40	16	18×14	7½×5	6 5 0	27 5 0	—	20 5 0

Write for Pamphlet P 239.

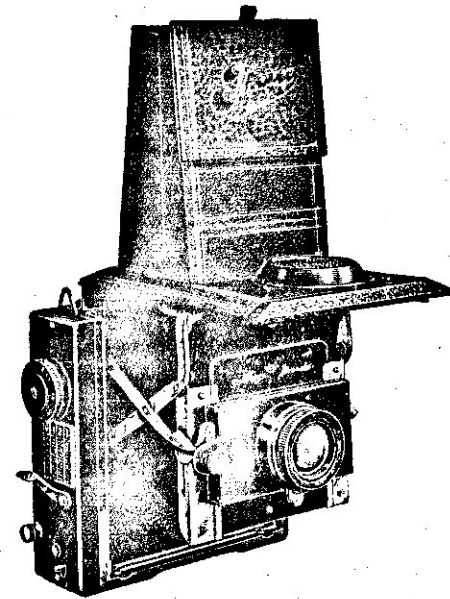
## IHAGEE CAMERAS

THE OXFORD "SUPER 16"  
16mm. HOME PROJECTORS & CAMERAS

"CELLOFIX"

Self-Toning and other Elephant Papers.

All Photographic and Optical Sundries.



SOLE DISTRIBUTORS

LOVELESS & HUNTER  
260 Tottenham Court Road,  
LONDON, W.1

Telephone—  
MUSEUM  
0694

Telegrams—  
Reydeuruk, Westcent.  
London

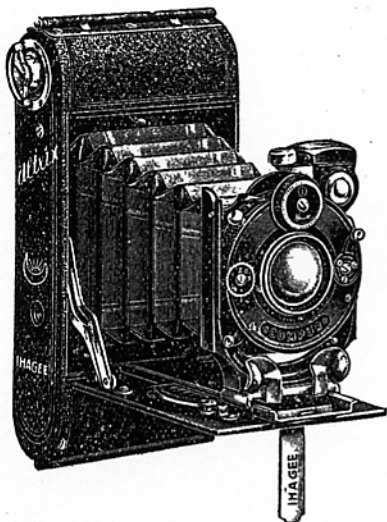


# IHAGEE ROLL-FILM CAMERAS

## THE ULTRIX POPULAR.

This model represents the acme of value and is specially suitable for the beginner.

**Specification.**—Body of specially light aluminium alloy, covered in fine morocco grained leatherette, bright parts heavily nickelled. Front and base black enamelled. Fitted with brilliant reversible finder infinity catch and focussing scale for all distances.



## THE ULTRIX SPECIAL

**Specification.**—Body drawn from one piece of metal, leather bellows, covered in finest morocco leather. Radial focusing RISING FRONT, brilliant reversible finder. Metal finished in dull black enamel or best quality nickel plate.

### Prices.

	Ibsor Shutter	Compur Shutter
With Triplex f/6.3 Anastigmat ... ..	£4 19 6	£6 4 0
With Meyer Trioplan f/4.5 Anastigmat	6 0 0	7 0 0
With Zeiss Tessar f/4.5 ... ..	—	10 5 0

*Write for fully Illustrated Price List.*

### Prices.

For 3½ × 2½ Roll Films with f/8 Rectilinear and Zenith 3-speed precision shutter ... ..	£2 12 6
Do. do. Triplex Anastigmat f/6.3 ... ..	£3 5 0
Do. do. f/4.5 Meyer Anastigmat with f/4.5 Meyer Anastigmat and Ibsor shutter ... ..	£5 0 0

## THE ULTRIX SPECIAL.

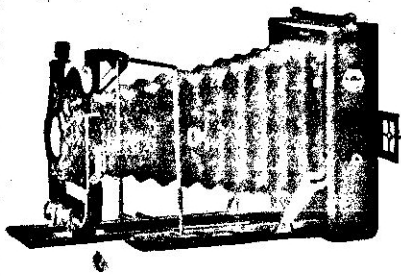
For Roll Films, 3½ × 2½.

The Ultrix Special is a camera of the highest possible quality and finish, but offered at prices hitherto only associated with instruments of a much inferior type.

# THE VICTOR SPECIAL

The Victor Special is in every respect a Camera de Luxe. It is replete with every necessary movement, but entirely without complication. In workmanship, design and finish it reaches the very highest standard.

**Specification.**—Body of light metal covered with the finest morocco leather. Double extension, rack and pinion focussing, ample rising and cross front with micrometer adjustment. The stirrup front is of brass, black enamelled and relieved with plated edges. Brilliant reversible finder is fitted and in addition a frame Iconometer is also included. The slides are of German silver.



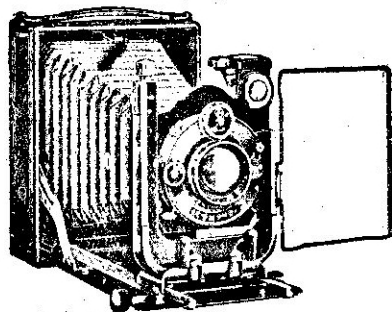
## PRICES—For Plates and Film Packs, 3½ × 2½ ins.

- With f/8.3 Triplex Anastigmat and Ibsor shutter ... .. £6 10 0
- With f/4.5 Meyer Veraplan Anastigmat and Compur shutter ... .. 8 15 0

All the above can be had in ½-plate size. Write for fully illustrated list

# THE SPEED VICTOR DeLUXE

**Specification.**—Body covered with best fine grain black morocco leather, bright parts beautifully plated. The stirrup is of brass and very handsome, being finished in burnished nickel instead of the usual black surface. It has every adjustment, rise, fall, and cross actuated by micrometer. Brilliant reversible finder is fitted, together with wire frame finder and sight. A really perfect example of camera construction.

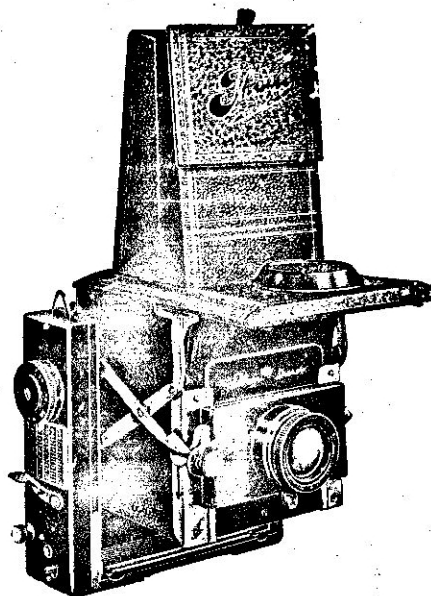


## PRICES

Compur Shutter	
... ..	£11 10 0
... ..	15 15 0

- 3½" × 2½" size fitted with Meyer F/3.8 Anastigmat
- 9 × 12 cm. or ½-plate fitted with Meyer F/3.5 Anastigmat

# THE IHAGEE FOLDING REFLEX



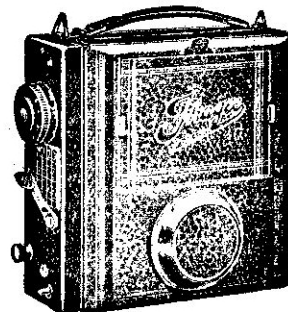
The Folding Reflex type of camera embodying as it does the advantages of the Reflex principle without the bulk of the ordinary Reflex camera, make it the most popular of all cameras with the enthusiastic amateur. In the IHAGEE Folding Reflex these advantages are allied with a simplicity of manipulation never before achieved with instruments of this type. It is opened ready for use with one simple straight pull and closed with equal facility. When extended it is as rigid as a box and when closed is little larger than the ordinary folding camera.

**Specification.**—Body constructed of a very light alloy and covered with the finest morocco leather. The lens front is supported by lazy tongs of great strength. The shutter is of the safety blind type and is practically fool proof. Its perfect action is secured by a very small number of parts and its principle simple in the extreme. All speed alterations are effected from the outside by simply revolving the speed disc attached to the winding knob.

It is smooth and quiet in action and may be relied upon in all climatic conditions. The camera is beautifully finished and in design, appearance and performance is the most perfect specimen of its type procurable.

## Prices.

Size	Lens.	Price.
3½ × 2½	Meyer f/4.5 Anast.	£27 15 0
4½ × 3½	" " " " "	32 15 0
3½ × 2½	Zeiss f/4.5 Tessar ...	33 15 0
4½ × 3½	" " " " "	39 15 0

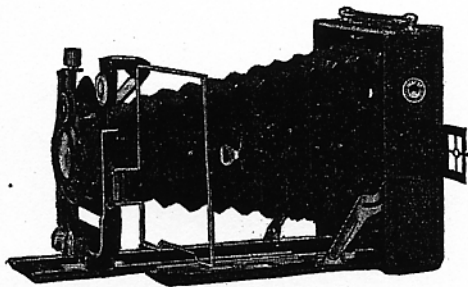


Also made with revolving back—see special list. Copy sent on application.

## THE VICTOR SPECIAL

The Victor Special is in every respect a Camera de Luxe. It is replete with every necessary movement, but entirely without complication. In workmanship, design and finish it reaches the very highest standard.

**Specification.**—Body of light metal covered with the finest morocco leather. Double extension, rack and pinion focussing, ample rising and cross front with micrometer adjustment. The stirrup front is of brass, black enamelled and relieved with plated edges. Brilliant reversible finder is fitted and in addition a fram Iconometer is also included. The slides are of German silver.



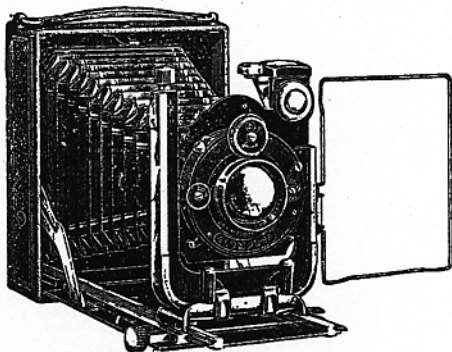
### PRICES—For Plates and Film Packs, $3\frac{1}{2} \times 2\frac{1}{2}$ ins.

With f/6.3 Triplex Anastigmat and Ibsor shutter	...	...	£6 10 0
With f/4.5 Meyer Veraplan Anastigmat and Compur shutter	...	...	8 15 0

All the above can be had in  $\frac{1}{2}$ -plate size. Write for fully illustrated list.

## THE SPEED VICTOR DeLUXE

**Specification.**—Body covered with best fine grain black morocco leather, bright parts beautifully plated. The stirrup is of brass and very handsome, being finished in burnished nickel instead of the usual black surface. It has every adjustment, rise, fall, and cross actuated by micrometer. Brilliant reversible finder is fitted, together with wire frame finder and sight. A really perfect example of camera construction.



### PRICES

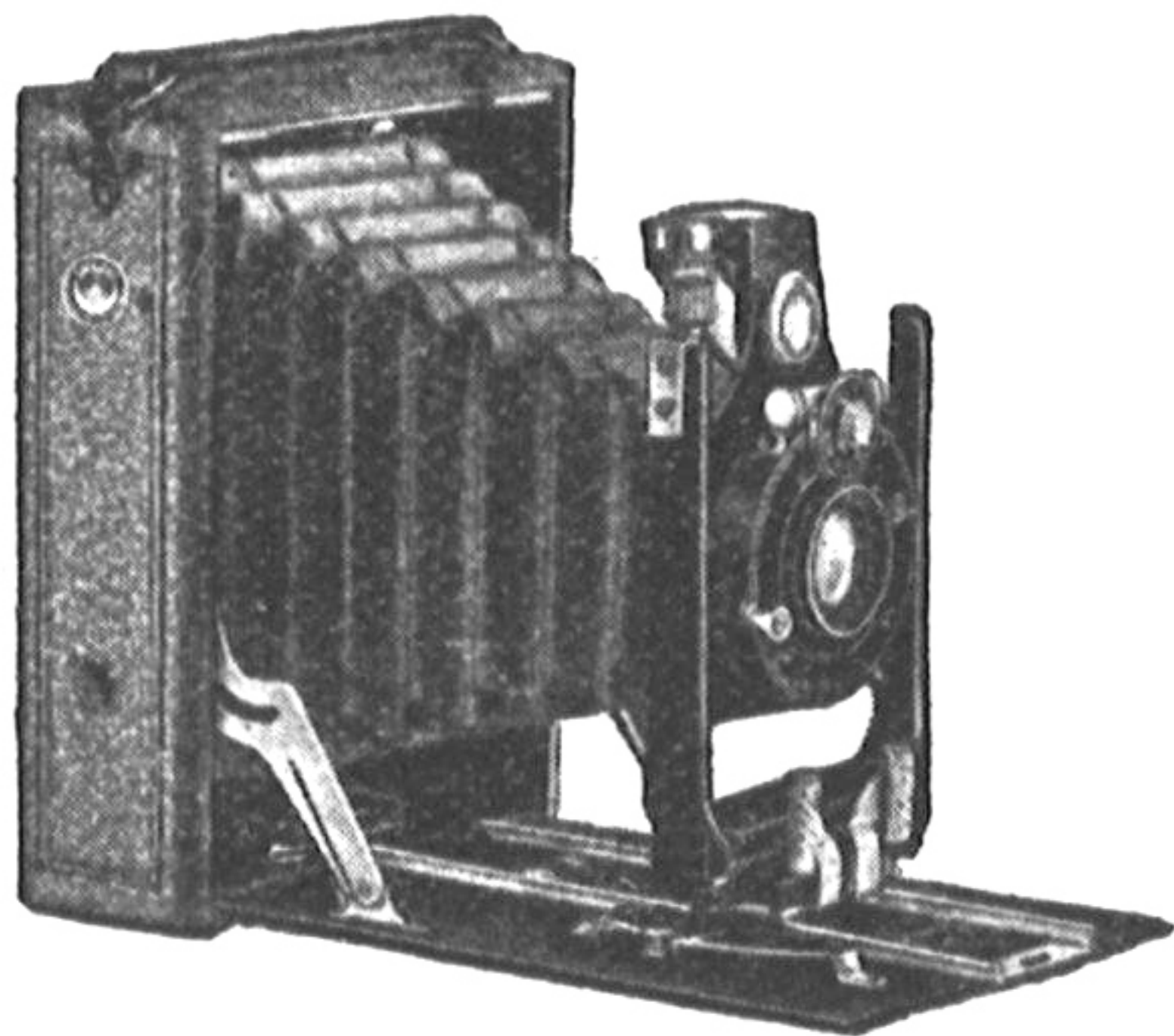
$3\frac{1}{2}'' \times 2\frac{1}{2}''$ size fitted with Meyer F/3.8 Anastigmat	...	Compur Shutter	£11 10 0
$9 \times 12$ cm. or $\frac{1}{2}$ -plate fitted with Meyer F/3.5 Anastigmat	...		15 15 0



### VICTRIX PLATE CAMERAS.

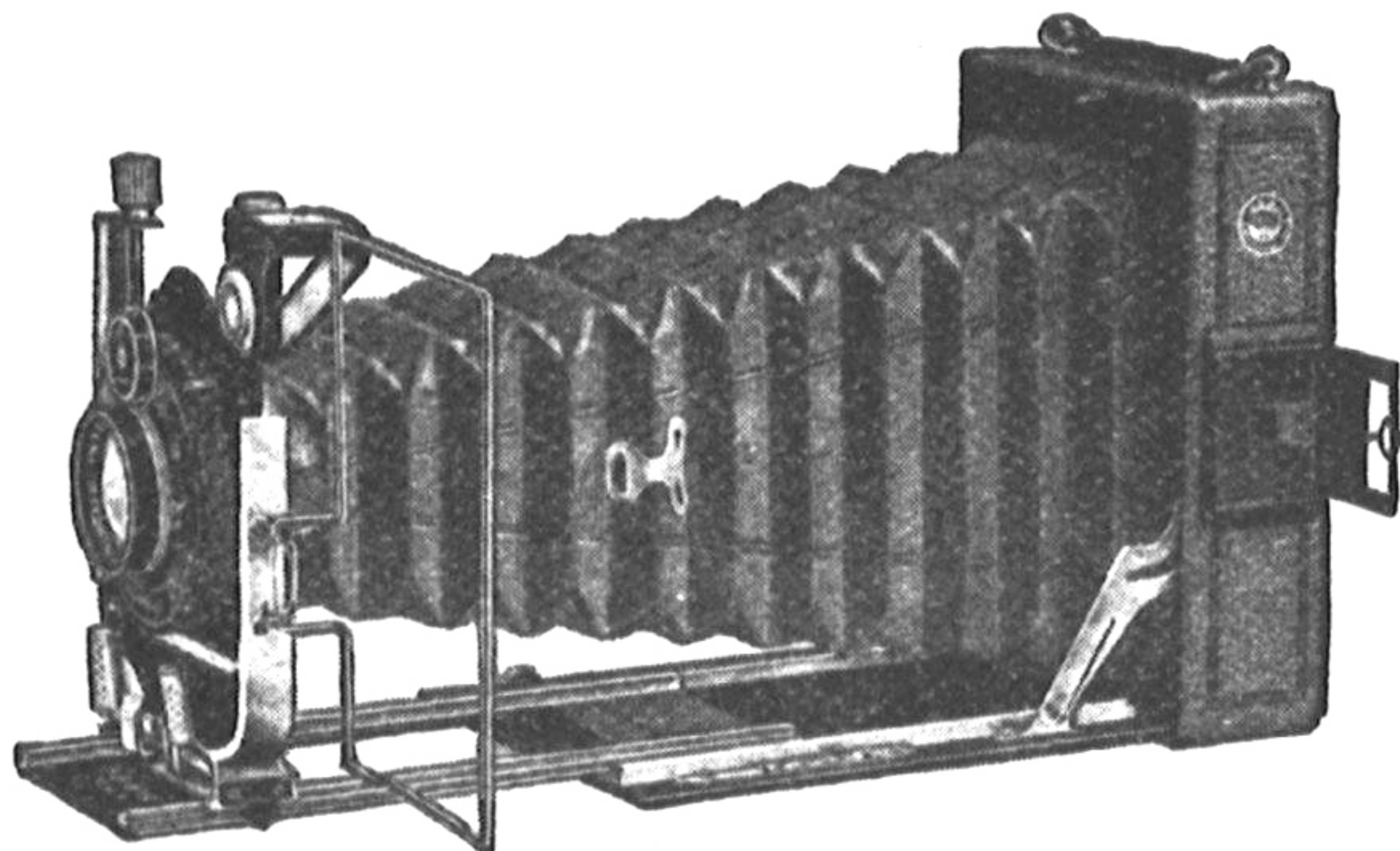
(Sold by Loveless & Hunter, 260, Tottenham Court Road, London, W. 1.)

A neat little camera for plates or film-pack, simple in design and



strongly but lightly made, is among the new models of the Victrix series where it is named the "Standard." The body is covered in good genuine fine leather, there is radial focussing, rising front, brilliant reversible finder and tripod bushes for upright and oblong pictures. Yet complete with  $f/4.5$  Meyer lens in Ibsor shutter the price is no more than £6 2s. 6d. in  $3\frac{1}{2} \times 2\frac{1}{2}$  inch or £7 2s. in the quarter-plate size.

The "Victrix Special" is emphatically a de luxe all-metal camera of double extension and with a front of specially large dimensions,



amply sufficing for the fitting of an  $f/3.5$  lens of appropriate focal length. Rising front and cross front movements are both operated by screw, and in addition to the reversible brilliant finder there is direct-vision finder for use when taking oblong pictures.

The "Victrix Special" is made in the three sizes of  $3\frac{1}{2} \times 2\frac{1}{2}$  inches, quarter-plate, and  $10 \times 15$  cm. With Compur shutter and  $f/3.5$  Meyer lens, the prices in the two smaller sizes are £11 10s. and £15 15s., respectively.

### OSRAM DAYLIGHT STUDIO LAMPS.

(Made by the General Electric Co., Ltd., Magnet House, Kingsway, London, W.C. 2.)

With the growth in popularity of the gas-filled filament lamps for artificial lighting in the studio, as inaugurated some years ago by the Osram lamps of this type, there has been a tendency of late to employ at least some of these lamps in a given installation with the blue colour-spraying by which a close approximation to the colour of daylight is obtained. The General Electric Company have introduced their Osram gas-filled lamps with this blue spraying, and supply them at the same prices as their well known "Pearl Osrams." The lamps are available in the higher powers for voltages from 100 to 260 at prices which in the case of the 1,000-watt lamp is 20s., or 27s. 6d. for 1,500-watt.



## THE VICTOR POPULAR

For Plates and Film Packs  $3\frac{1}{2}'' \times 2\frac{1}{2}''$ .

Despite its low price the Victor Popular is an excellently designed and finished camera. It has real leather bellows, reversible brilliant view finder, infinity catch and focussing scale for all distances. Complete with wire release and one single slide.

### Prices.

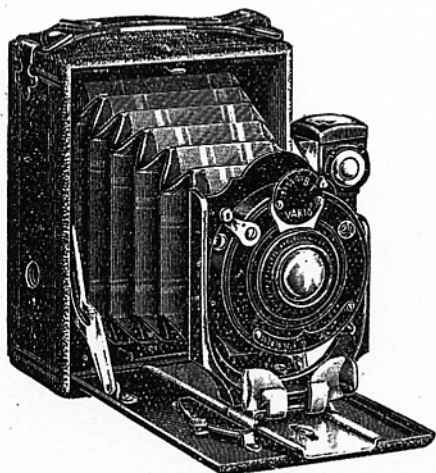
With f/8 Rectilinear and Zenith 3-speed shutter	£1 19 6
With Triplex Anast. f/6.3	£2 10 0



## THE VICTOR STANDARD

For Film Packs or Plates  
 $3\frac{1}{2}'' \times 2\frac{1}{2}''$  and  $\frac{1}{4}''$  Plate.

In the Victor Standard models quality and moderate price are combined in a wonderful degree. They are equipped and finished in a manner usually only found in cameras of much higher prices, and make a special appeal to the amateur who requires a really good camera at a reasonable figure.



### SPECIFICATION.

Body covered with best fine grain leather. Aluminium baseboard, finished black enamel with the usual bright parts highly nickelled. Radial focussing over extended scale. Rising front, brilliant reversible finder, tripod bushes, etc., etc.

### PRICES.

	Zenith Shutter	Ibsor Shutter	Compur Shutter
$3\frac{1}{2}'' \times 2\frac{1}{2}''$			
With F/6.3 Triplex Anast.	£3 10 0	£4 17 6	—
.. F/4.5 Meyer ..	—	5 17 6	6 18 6
$4\frac{1}{4}'' \times 3\frac{1}{4}''$			
.. F/6.3 Triplex ..	4 12 6	5 18 6	—
.. F/4.5 Meyer ..	—	6 18 6	8 0 0