

# EXAKTA

the perfect  
REFLEX  
CAMERAS



Kine-Exakta  
24/36 mm.



Standard-Exakta  
4/6.5 cm.



**GARNER & JONES LTD.**  
POLEBROOK HOUSE, GOLDEN SQUARE, LONDON, W.1  
Telephone and Telegrams : GERRARD 2300

List No. 39. 1938

Subject to Market Fluctuations.

# KINE-EXAKTA

1938 MODEL



Fig. 1

## The KINE-EXAKTA

is the first true reflex camera in the world taking  $1\frac{1}{2} \times 1$  in. ( $24 \times 36$  mm.) pictures on perforated cinema film. In spite of the small size of the image, the focussing and composition of the picture are accurately arranged with extreme ease. The ground glass screen is made in the form of a lens (an Exakta patent) which enlarges the visual image to  $2\frac{1}{2} \times 1\frac{1}{2}$  in. in size, besides brightening it considerably. A second magnifier (Fig. 2) can be swung into place for critical focussing, and enlarges the original image to twice its normal size, so that in this case a picture  $3\frac{1}{2} \times 2\frac{1}{2}$  in. seems to be seen.

This method of focussing and composing is particularly valuable with colour films as these films are used in the Kine-Exakta as a matter of course. Though the final picture is only  $1\frac{1}{2} \times 1$  in. in size, the image seen for composing is much larger, and the correct limits of field and arrangement of colours can be very easily adjusted.

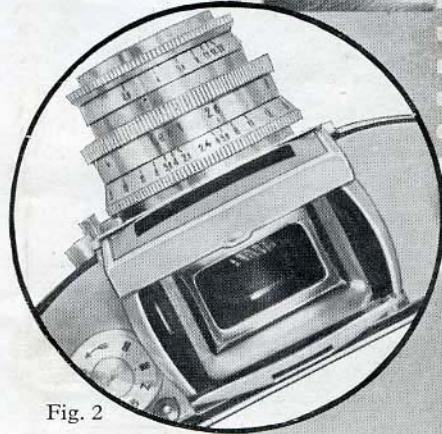


Fig. 2



# KINE-EXAKTA

1938 MODEL

## Some of the technical advantages incorporated in the KINE-EXAKTA are—

Unified control by single winding lever (Fig. 1) gives the camera a strikingly rapid action, and promotes readiness for use in the shortest space of time.

A single push (Fig. 2) moves the winding lever across to the left, and this movement winds up the shutter, moves on the film to the next picture, sets the reflex mirror inside the camera, and turns on the picture counter to the next number. The moment the winding lever is released, it springs back to its original position.

The picture counter (Fig. 1 and 2) is placed so that it can readily be seen from above when the camera is being used.

An exceedingly wide range of automatic shutter speeds is given by the Exakta focal plane shutter, the controls of which are also on top of the camera. The shorter exposures between  $1/25$  and  $1/1000$ th of a second, which serve for amateur snapshots and for rapid work on the fastest moving objects, are set by a single knob (Fig. 1 & 2). A further control knob (Fig. 3)

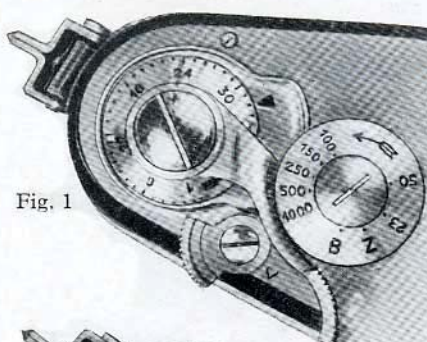


Fig. 1

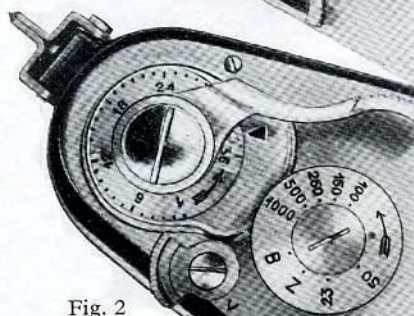


Fig. 2

gives the longer exposures between  $1/10$ th sec. and 12 full secs., and covers the times required for photography in the streets at night, in the theatre or at home in ordinary room lighting. A built-in delayed action shutter release (Fig. 3) can be used with any exposure time between  $1/1000$ th of a second and 6 full seconds.

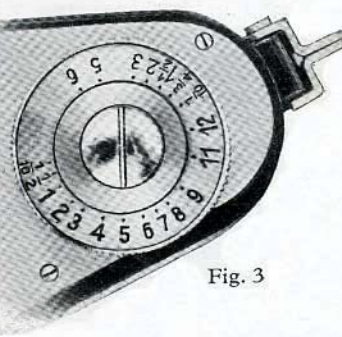


Fig. 3

# KINE-EXAKTA

## 1938 MODEL

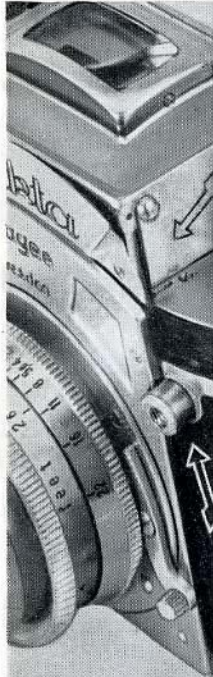


Fig. 4

The automatic safety lock (Fig. 4) makes it impossible to expose the film accidentally. When the finder hood is closed, the shutter cannot be released, so that as long as the subject to be taken cannot be seen in the view-finder, no exposure can be made.

The Kine-Exakta is also provided with a very useful and exclusive feature; there is no need to wait until all 36 exposures have been made, for a small knife (Fig. 5) inside the camera can be used to cut off the exposed section of the film and allow it to be given immediate development.

The depth of focus problem—a very real one in a miniature camera with an ultra-fast lens—is dealt with in the view-finder of the Kine-Exakta, but where rapid snapshot work is to be done a glance from above at the lens will indicate the depth of focus, for a special scale is provided on the focussing mount. By means of this scale (Fig. 6) the lens may be focussed to give any necessary depth of focus at a pre-determined aperture.

To supplement the advantages given by the camera, a special cassette (Fig. 7) is available, made of synthetic material.

This is loaded with ordinary cinema film, 35 mm. wide, which gives the lowest possible cost of negative material and allows film strips of any length up to 36 pictures to be used in the camera.

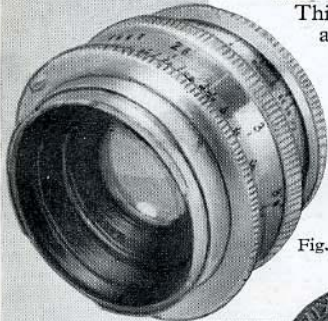


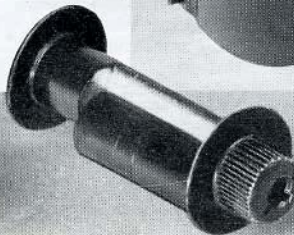
Fig. 6



Fig. 5



Fig. 7



# KINE-EXAKTA

## 1938 MODEL

### Specification :

Die-cast light metal body—completely light-tight ; folding finder hood opening by pressure on a button ; frame finder ; built-in ground glass screen and combined magnifier ; second accessory magnifier for critical focussing ; rewinding and film-cutting devices ; mechanical inter-connection between shutter and film wind ; picture counter to 36 exposures. Focal-plane self-capping shutter, giving exposures between 12 seconds and 1/1000th second normally and 6 seconds and 1/1000th second with delayed action mechanism. The Delayed Action Control allows 12 seconds to elapse after the release has been pressed before the shutter operates. Interchangeable lenses in bayonet fitting. Precision helical focussing from infinity to 3 feet. Automatic shutter lock, which only allows the shutter to be released when the finder hood is erect. Precision film channel in camera back. Tripod bush, leather neck sling, flexible wire release and connection sockets for flash-bulb work included.

Measurements :  $6 \times 3\frac{1}{4} \times 3$  ins. Weight : 32 ozs.

				Prices :	£ s. d.
8140 BR	Exaktar Anastigmat	<i>f</i> /3.5	focus $2\frac{1}{8}$ in. (5.4 cm.)..	..	27 10 0
8140 Q	Zeiss Tessar	„ <i>f</i> /3.5	„ 2 „ (5 „ )..	..	34 10 0
8140 E	„ „	„ <i>f</i> /2.8	„ 2 „ (5 „ )..	..	38 10 0
8140 PL	Hugo Meyer Primoplan	<i>f</i> /1.9	„ $2\frac{1}{4}$ „ (5.8 „ )..	..	45 0 0
8140 LR	Zeiss Biotar	„ <i>f</i> /2	„ $2\frac{1}{4}$ „ (5.8 „ )..	..	55 0 0
—	Solid Leather Ever-Ready Case	..	..	..	1 0 0

### SPECIAL INTERCHANGEABLE LENSES :

Tele-Tessar <i>f</i> /6.3, ..	focal length $7\frac{1}{8}$ in. (18 cm.)	..	..	..	31 10 0
Tele-Megor <i>f</i> /5.5, ..	„ „ 6 in. (15 cm.)	..	..	..	16 0 0
Tele-Megor <i>f</i> /5.5, ..	„ „ $7\frac{1}{8}$ in. (18 cm.)	..	..	..	20 0 0
Tele-Megor <i>f</i> /5.5, ..	„ „ 10 in. (25 cm.)	..	..	..	30 0 0
Meyer Wide Angle <i>f</i> /4.5, ..	„ „ $1\frac{1}{8}$ in. (4 cm.)	..	..	..	14 14 0
Dallon Telephoto <i>f</i> /5.6, ..	„ „ 6 in.	..	..	..	10 15 0
Kine-Exakta Enlarger, 6040	(see page 16)	..	..	..	5 15 0
Lumimax Enlarger M1, No. 6402	(see page 17)	..	..	..	7 15 0
Lumimax Projector-Enlarger, without lens,	taking lens of Kine Exakta camera	..	..	..	11 0 0
Vacu-Blitz Flash-bulb Outfit	(see page 13)	..	..	..	2 5 0
Microscope Attachment	(see page 13)	..	..	..	5 15 0
Extension Tubes, chromium finish (A or B)	..	..	..	each	8 6
Pair of Distance Rings (necessary to fix the tubes into the bayonet fitting and on to the lens)	..	..	..	..	1 0 0
Reproduction or Copying Stand	..	..	..	..	6 10 0
Lens Hood (up to 38 mm. diameter)	..	..	..	..	7 6
Lens Hood (up to 51 mm. diameter)	..	..	..	..	10 6
Shutter Release Button	..	..	..	..	2 0
Finder Hood Extension Box, with magnifier	..	..	..	..	17 6
Ball and socket Tripod Head	..	..	..	..	6 6
Exakta Filters (Yellow, Green, Blue or Red) :					
For <i>f</i> /3.5 lenses	12/6 ; for <i>f</i> /2.8 lenses	12/6 ; for <i>f</i> /1.9 and <i>f</i> /2 lenses			1 5 0
Bernotar Polarizing Filter	..	..	..	..	3 5 0
Supplementary Lens for close work :					
For <i>f</i> /3.5 lenses	8/6 ; for <i>f</i> /2.8 lenses	10/6 ; for <i>f</i> /1.9 and <i>f</i> /2 lenses			16 6

# Exakta Focal Plane Reflex Cameras

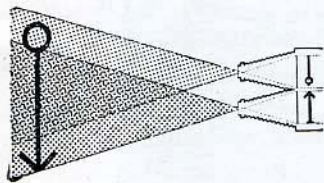
Patent Nos. 410306, 414465

For Roll Films

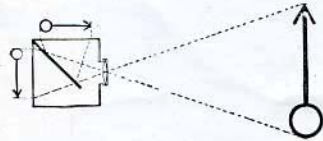
Full Size Pictures on V.P. Films (4×6.5 c.m.)

Notwithstanding the small size of the body of this camera, pictures made on V.P. films, standard size, are very effective and large enough to give complete satisfaction. The picture shown on the ground glass is identical with the photograph to be taken. Pictures will always be sharp, as focussing and depth of focus can be easily controlled on the ground glass. It is impossible to take two pictures on one film, as the changing of the film from number to number automatically sets the shutter, therefore "Exakta" is always ready for use.

## SOME PRINCIPAL ADVANTAGES :



This is parallax



"Exakta" is free from parallax

### FREE FROM PARALLAX

Only a mirror-reflected image as produced by the "Exakta" lens is always reliable and absolutely coincides with the final picture. Has it not happened to you, in spite of accurate observation through the finder, that, especially in close-up pictures, the body of a person was taken minus the head? No matter whether view finder was built into the camera or attached to it. Such failures are due to a separate finder and taking lens, and is called the parallax. The two diagrams will convince you of the superiority of the "Exakta" camera in this respect.

### ALWAYS SHARP PICTURES

Working with a mirror reflex camera is the acme of perfection. No estimating of distances, no time-consuming control of distance meters and tables! No trifling little image in a view finder!

The large reflected image reduces the work of adjusting the diaphragm and the focussing to almost automatic operations. By means of a precision helical mount, focussing to correct sharpness takes place with microscopic accuracy. A magnifier in the hood may further be relied on in case of ultra-critical focussing.

### A WONDERFUL SHUTTER

A high-grade camera requires a first-class shutter. The self-capping focal plane shutter, on which the speeds can be easily read, makes instantaneous exposures from  $1/25$ th to  $1/1,000$ th second, as well as time exposures of  $1/10$ ,  $1/2$ , 1 to 12 seconds without delayed action release and exposures from  $1/1,000$ th to 6 seconds when the delayed action release is used. The "Exakta" focal plane shutter is reliable and precise and is more efficient than the usual shutters. Whether you wish to take a picture of everyday life, of a moving car or aeroplane or of a sporting or similar high speed event, your "Exakta" will not fail you!

### A UNIVERSAL REFLEX FINDER

The finder hood is constructed to use the "Exakta" as a reflex or as an ordinary sports camera. By pressing lightly on a lever the finder hood springs open into the "open" position. It is also possible to see the ground glass screen while using the camera at eye level by means of a mirror in the light hood. By pressing down this mirror the light hood is changed into an ordinary and very exact frame finder.

### INTERCHANGEABLE LENSES

An "Exakta" is remarkably efficient in every way, a real universal camera. There is not a sphere in which its numerous advantages cannot be utilised, including landscape or portrait work, scientific, sport, night and stage photography. Various interchangeable lenses of high quality can be supplied and the lenses can be changed in a very simple way even whilst the camera is loaded. For night, interior or stage work an "Exakta" with the largest aperture lens obtainable should be used.

### ELEGANT AND PRACTICAL

The beautiful form of the "Exakta" attracts at once. Its handy body lies conveniently in your hand during the taking of a picture. The elegant trapezoid form is not only beautiful but ensures the utmost utilisation of space. Provided with reflex mirror, focal plane shutter and the most rapid lens, the "Exakta" nevertheless appears to be hardly larger than an ordinary roll film camera.

Body made entirely of metal, leather covered, with spring safety cover to the film recording aperture, for use with Panchromatic films, and fitted with Tripod Bush and Cable Release.

Size overall  $6 \times 3 \times 2\frac{1}{2}$  ins. Weight, approximately, 26 ozs., according to lens fitted.

# Standard Exakta Focal Plane Reflex

Patent Nos. 410306, 414465

For Roll Films

Full Size Pictures on V.P. Film (4×6.5 cm.)

## MODEL A



The Ihagee Patent Safety Blind Focal Plane Shutter allows for speeds from 1/25th to 1/1,000th second, also time and bulb.

### Prices :

		£	s.	d.
8150 ABR	Exaktar Anastigmat <i>f</i> /3.5, 7.5 cm. focus	15	0	0
8150 AQ	Zeiss Tessar <i>f</i> /3.5, 7.5 cm. focus	19	0	0
8150 AE	Zeiss Tessar <i>f</i> /2.8, 7.5 cm. focus	23	0	0
—	Ever-Ready—Solid Leather Case for camera only	1	0	0
—	Square Solid Leather Case for Camera, Telephoto Lens and filters	1	5	0

### INTERCHANGEABLE LENSES :

		£	s.	d.
Long Focus Ihagee Anastigmat	<i>f</i> /4.5, 10.5 cm. focus	5	15	0
Telephoto Lens "Dallon"	<i>f</i> /5.6, 6 in.	8	15	0
Tele-Megor Hugo Meyer	<i>f</i> /5.5, 15 cm.	12	0	0
Tele-Tessar Anastigmat	<i>f</i> /6.3, 12 cm.	15	10	0
" "	<i>f</i> /6.3, 18 cm.	24	0	0
" "	<i>f</i> /6.3, 25 cm.	30	0	0
Wide Angle Tessar	<i>f</i> /8, 5.5 cm.	13	10	0
" "	Dallmeyer <i>f</i> /11, 2½ in.	6	6	0

### LIGHT FILTERS

		s.	d.
Yellow.	Light or Medium.	Green, Yellow Green, Red or Blue.	
	For <i>f</i> /3.5 lenses up to 32 mm.	12	6
	For <i>f</i> /2.8 " " 37 mm.	15	0

Always state for which lens required.

# Standard Multi-Speed Exakta

Patent Nos. 410306, 414465

For Roll Films Focal Plane Reflex  
Full Size Pictures on V.P. Films 4 × 6.5 cm.

## MODEL B



This represents the most popular equipment of the Exakta. Instantaneous exposures of highest speeds from 1/25th to 1/1,000th second. Short and long time exposures from 1/10th, ½ to 12 seconds. Delayed action release for exposures from 1/1,000th to 6 seconds.

The Delayed Action Control allows 12 seconds to elapse after the release has been pressed before the shutter operates.

						£	s.	d.
8150 BBR	Fitted with Exaktar Anastigmat f/3.5, focal length 7.5 cm.	...	...	...	...	19	10	0
8150 BN	" Schneider Xenar f/3.5, focal length 7.5 cm	...	...	...	...	22	10	0
8150 BQ	" Zeiss Tessar f/3.5, focal length 7.5 cm.	...	...	...	...	23	10	0
8150 BAX	" Schneider Xenar f/2.8, focal length 7.5 cm.	...	...	...	...	26	0	0
8150 BE	" Zeiss Tessar f/2.8, focal length 7.5 cm.	...	...	...	...	27	10	0
—	Ever-Ready Solid Leather Case for camera	...	...	...	...	1	0	0
—	Square Form Solid Leather Case for camera, telephoto lens and filters	...	...	...	...	1	5	0
—	Attaché shape Case, strongly sewn and well finished, for camera and complete range of accessories, with good lock and key	...	...	...	...	3	3	0

### INTERCHANGEABLE LENSES :

						£	s.	d.
Long Focus Ihagee Anastigmat	f/4.5, 10.5 cm. focus	...	...	...	...	5	15	0
Telephoto Lens "Dallon"	f/5.6, 6 in.	...	...	...	...	8	15	0
Tele-Megor Hugo Meyer	f/5.5, 15 cm.	...	...	...	...	12	0	0
Tele-Tessar Anastigmat	f/6.3, 12 cm.	...	...	...	...	15	10	0
"	f/6.3, 18 cm.	...	...	...	...	24	0	0
"	f/6.3, 25 cm.	...	...	...	...	30	0	0
Wide Angle Tessar	f/8, 5.5 cm.	...	...	...	...	13	10	0
"	f/11, 2½ in.	...	...	...	...	6	6	0

### LIGHT FILTERS

							s.	d.
Yellow, Light or Medium ; Green, Yellow Green, Red or Blue.								
For f/3.5 lenses up to 32 mm.	...	...	...	...	...	...	12	6
For f/2.8 " " 37 mm.	...	...	...	...	...	...	15	0

Always state for which lens required.



# Standard Multi-Speed Exakta

Patent Nos. 410306, 414465

For Roll Films

Focal Plane Reflex

Full Size Pictures on V.P. Films 4×6.5 cm.

MODEL B

DE LUXE CHROMIUM PLATED



This model is the same as described on previous page, but is finished in best matt chromium plate, giving the camera a strikingly handsome appearance.

		£	s.	d.
8150 BBR	Fitted with Exaktar Anastigmat <i>f</i> /3.5, focal length 7.5 cm. ... ..	21	0	0
8150 BN	" " Schneider Xenar <i>f</i> /3.5, focal length 7.5 cm. ... ..	24	0	0
8150 BQ	" " Zeiss Tessar <i>f</i> /3.5, focal length 7.5 cm. ... ..	25	0	0
8150 BAX	" " Schneider Xenar <i>f</i> /2.8, focal length 7.5 cm. ... ..	27	10	0
8150 BE	" " Zeiss Tessar <i>f</i> /2.8, focal length 7.5 cm. ... ..	29	0	0
—	Ever-Ready Solid Leather Case for camera ... ..	1	0	0
—	Square Form Solid Leather Case for camera, telephoto lens and filters ... ..	1	5	0
—	Attaché-shape Case, strongly sewn and well finished, for camera and full range of accessories, with good lock and key ... ..	3	3	0

## INTERCHANGEABLE LENSES:

Long Focus Ihagee Anastigmat	<i>f</i> /4.5, 10.5 cm. focus ... ..	5	15	0
Telephoto Lens "Dallon"	" <i>f</i> /5.6, 6 in. " ... ..	8	15	0
Tele-Megor Hugo Meyer	" <i>f</i> /5.5, 15 cm. " ... ..	12	0	0
Tele-Tessar Anastigmat	" <i>f</i> /6.3, 12 cm. " ... ..	15	10	0
"	" <i>f</i> /6.3, 18 cm. " ... ..	24	0	0
"	" <i>f</i> /6.3, 25 cm. " ... ..	30	0	0
Wide Angle Tessar	" <i>f</i> /8, 5.5 cm. " ... ..	13	10	0
"	" Dallmeyer " <i>f</i> /11, 2 3/8 in. " ... ..	6	6	0

## LIGHT FILTERS

		£	s.	d.
Yellow, Light or Medium ; Green, Yellow Green, Red or Blue :				
For <i>f</i> /3.5 lenses up to 32 mm.	... ..	12	6	
" <i>f</i> /2.8 " " 37 mm.	... ..	15	0	

Always state for which lens required.

# Multi-Speed Night Exakta

With Large Aperture Lenses

Patent Nos. 410306, 414465

## MODEL B

For Roll Films Full Size Pictures on V.P. Films (4×6.5 cm.)

**DE LUXE MODEL. CHROMIUM PLATED**



		£	s.	d.
8150 P.L.	Fitted with Hugo Meyer Primoplan $f/1.9$ , focal length 8 cm.	41	0	0
8150 O.	„ „ Schneider Xenon $f/2$ , focal length 8 cm.	41	0	0
8150 S.S.	„ „ Dallmeyer Super Six $f/1.9$ , focal length 3¼ ins. (8 cm.)	37	10	0
8150 L.R.	„ „ Zeiss Biotar $f/2$ , focal length 8 cm.	49	0	0
—	Solid Leather Ever-Ready Case	1	5	0
—	Ditto ditto Case with divisions for accessories and lock and key	1	12	6

### INTERCHANGEABLE LENSES:

		£	s.	d.
Long Focus Ihagee Anastigmat	$f/4.5$ , 10.5 cm. focus	5	15	0
Telephoto Lens "Dallon"	„ $f/5.6$ , 6 in.	8	15	0
Tele-Megor Hugo Meyer	„ $f/5.5$ , 15 cm.	12	0	0
Tele-Tessar Anastigmat	„ $f/6.3$ , 12 cm.	15	10	0
„ „	„ $f/6.3$ , 18 cm.	24	0	0
„ „	„ $f/6.3$ , 25 cm.	30	0	0
Wide Angle Tessar	„ $f/8$ , 5.5 cm.	13	10	0
„ „ Dallmeyer	„ $f/11$ , 2¾ in.	6	6	0

### LIGHT FILTERS

		s.	d.
Yellow.	Light or Medium Density	25	0
Green, Yellow Green, Red or Blue		30	0

*Always state for which lens required.*



# Standard Multi-Speed Exakta

Focal Plane Reflex

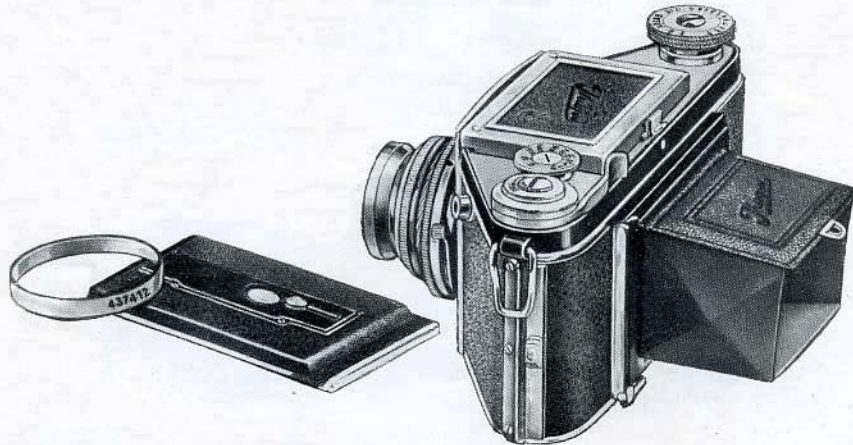
Patent Nos. 410306, 414465

## MODEL C

### FOR ROLL FILMS AND PLATES

Full Size Pictures on V.P. Films  $4 \times 6.5$  cm. or Plates  $4\frac{1}{2} \times 6$  cm.

DE LUXE MODEL. CHROMIUM PLATED



The "Plate Back" is an additional refinement to this beautiful miniature Reflex Camera.

Many photographers wish to avail themselves of the use of plates for special purposes.

This model is fitted with a panel in the back which also carries the Film pressure plate. It can be taken out and the focussing screen inserted in its place.

A detachable ring is fitted on the lens mount which must be taken off *when using plates* to allow for the difference in register between plates and films.

**Note.** When using plates the picture must be focussed on the back screen. The reflex focussing screen is not in register for plates.

Three slides for  $4.5 \times 6$  cm. plates and back focussing screen are provided.

#### Prices :

		£	s.	d.
8150 C.BR	Fitted with Exaktar Anastigmat $f/3.5$ , focal length 7.5 cm. . .	24	0	0
8150 C.Q	" " Zeiss Tessar " $f/3.5$ , " " 7.5 " . .	28	0	0
8150 C.E	" " " " " $f/2.8$ , " " 7.5 " . .	32	0	0
—	Solid Leather Ever-Ready Case . . . . .	1	2	6
—	Solid Leather Case with division for Telephoto lens, filters, dark slides, etc. . . . .	1	10	0
—	Attaché shape Case, strongly sewn and well finished for camera and accessories, with good lock and key . . . . .	3	3	0
—	Extra Dark Slides . . . . . each	2	3	

*For Interchangeable Lenses and other accessories see pages 7, 8 & 9.*

## Interchangeable Lenses for Exakta

Both models of the  
**EXAKTA**  
whether they take  $1\frac{1}{2} \times 1$ "  
or  $2\frac{1}{2} \times 1\frac{5}{8}$ " negatives,  
are given an exceedingly  
wide range by the provision  
of interchangeable lenses.

They are universal cameras in the full sense of the word, for they can be used effectively for portraits, landscapes, street scenes, architectural studies, and all average photographic work. Wide-angle and telephoto lenses increase their range still more, and for night photography a series of ultra-fast lenses with full apertures up to  $f/1.9$  are available. The lenses can be changed while the camera is fully loaded and each one of them gives an image on the ground glass that is completely free from parallax error, and is in focus on the film when focussed on the ground glass. In the STANDARD EXAKTA, the lenses screw out, but in the KINE-EXAKTA they are provided with a bayonet mount, which is in practice even more rapid to use.



## Interchangeable Lenses for Standard Exakta



Taken with Wide-angle Tessar  
 $f/8$ , Foc. length 5.5 cm.

View angle  $66^\circ$

Taken with Tele-Tessar  $f/6.3$ ,  
Foc. length 12 cm.

View-angle  $34^\circ$



Taken with Tele-Megor  $f/5.5$ ,  
Foc. length 15 cm.

View-angle  $28^\circ$

Taken with Tele-Tessar  $f/6.3$ ,  
Foc. length 18 cm.

View-angle  $24^\circ$



						$f$	s.	d.	
Long Focus Ihagee Anastigmat	$f/4.5$	10.5 cm. focus	..	..	..	5	15	0	
Telephoto Lens "Dallon"	$f/5.6$	6 in.	..	..	..	8	15	0	
Tele-Megor Hugo Meyer	$f/5.5$	15 cm.	..	..	..	12	0	0	
Tele-Tessar Anastigmat	$f/6.3$	12 cm.	..	..	..	15	10	0	
"	"	"	..	..	..	24	0	0	
"	"	"	..	..	..	30	0	0	
Wide Angle Tessar	$f/8$	5.5 cm.	..	..	..	13	10	0	
"	"	Dallmeyer	..	$f/11$	$2\frac{3}{8}$ in.	..	6	6	0

## Accessories for Exakta Cameras

### EXAKTA SUPPLEMENTARY LENSES

The **Exakta Supplementary Lens for Close-ups** shortens the focal length of the lens so that one may approach the object more closely. The **Exakta Tele-Lens**, on the other hand, lengthens the focal length to about 10.5 cm. The view-angle becomes smaller, but the size of the object increases compared with the normal optical system approximately 50 per cent. An extension tube is included in the price of Tele Lens.

	Close-up Lens		Tele Lens and Tube	
	s.	d.	£	s. d.
For <i>f</i> /3.5 Lenses .. .. .	8	6	1	0 0
„ <i>f</i> /2.8 „ .. .. .	10	6	1	2 6
„ <i>f</i> /1.9 or <i>f</i> /2 Lenses .. .. .	16	6	1	10 0

## Microscopical Photography with the EXAKTA

The "Exakta" conquers this sphere of usefulness thanks to its being a *real reflex-camera with only one lens*. The ground-glass enables one to control the image, even for moving subjects, until the exposure is made and ensures obtaining the correct image, as the "Exakta" is completely free from parallax. The "Exakta" is attached to the microscope by means of the Micro-Adapter.

### Exakta Micro-Adapter

This adapter can be turned over, thus permitting the interchange of the oculars of the microscope and to change the scale of enlargement.

A very practical and simple device !

"Exakta" Micro-Adapter in Case ..	£5	5	0
Kine-Exakta „ „ „ ..	5	15	0



## Snapshots at Night

The Exakta synchronised flashlight outfit makes the photographer independent of daylight, when used in conjunction with Exakta Cameras. The flash is fired at the same moment as the shutter opens, and synchronisation is so accurate that the flash cannot fire before or after the shutter has exposed the film.

Fits both Standard Exakta and Kine Exakta.

Price of Outfit and two Reflectors ..	£2	5	0
---------------------------------------	----	---	---

## Accessories for Exakta Cameras

### EXTENSION TUBES

#### Double Extension with Your EXAKTA

It may appear impossible, but it is nevertheless true! The Exakta Extension Tubes, screwed in between the focussing mount and the lens, produce a double extension effect. This makes it possible to obtain real close-ups of small objects, such as coins, stamps, or insects, grass, flowers, etc. The extension tubes may be had in two sizes, viz., A = 1½ cm. and B = 3 cm. The extensions may be joined and the extension of the focussing mount and two tubes B produce double the normal focal length, and thus pictures of the actual size of the object. The image on the ground glass is always decisive for focussing.



Tube A, 1½ cm. for photographing at a distance of 13 ins., Black 6/6, Chrome 8/6  
 „ B, 3 cm. „ „ „ „ 8 „ „ 6/6, „ 8/6

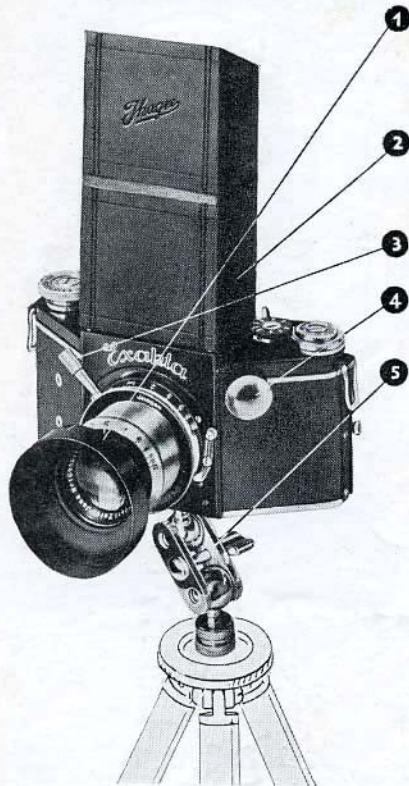
### CASES FOR EXAKTA



The "Exakta" is worth careful protection. Therefore, when you buy a camera, purchase a case which will protect your "Exakta" from external damage. The case shown fully surrounds the camera without, however, interfering with its readiness to use. Open the case and your camera is ready for work. A bush holds camera and case together. You can further screw the "Exakta" with its case on to a stand, as the bush has the necessary outer thread.

Kine Exakta Ever-ready Case .. .. .	£1 0 0
Standard Exakta Ever-ready Case for A and B up to f2.8 Lenses ..	1 0 0
„ „ „ „ for Plate Back Exakta .. .. .	1 2 6
„ „ „ „ for Night Exakta .. .. .	1 5 0
Solid Leather Square Form Case for Models A and B, with divisions for camera, telephoto lens and filter, with lock and key .. .. .	1 5 0
Ditto, ditto, for Model C .. .. .	1 10 0
Attaché pattern, strongly sewn and well finished, for all models of camera and range of Standard accessories, with good lock and key .. .. .	3 3 0

## EXAKTA ACCESSORIES



- 1. Lens Hood**  
 keeps troublesome front or side light (sun as well as artificial light) away from the lens. Indispensable for the attractive "against the light" exposures. Attached by slip-on mount to the front lens. s. d.  
 For all lenses except  $f/2$  and  $f/1.9$  .. .. 7 6  
 For Night-Exakta  $f/2$  &  $f/1.9$  10 6
- 2. Light-hood Extensions**  
 serve for keeping side light away from the focussing screen so as not to interfere with the brightness of the finder image.  
 Plain leather Extension in case 6 6  
 Leather light-hood extension in case, with magnifier enlarging the entire image on the screen (particularly to be recommended) .. 17 6
- 3. Focussing Pin**  
 is screwed into the focussing mount ring and facilitates adjustment of the lens .. .. 2 0
- 4. Additional Button-Release**  
 facilitates releasing of shutter if thick gloves are worn in cold weather. This additional button-release increases the surface of the release button .. .. 2 0
- 5. Ball Socket Joint** (see page 31)  
 is chiefly intended for vertical pictures if a tripod is used, but does good service also for technical photos by permitting universal adjustment of the Exakta .. .. 6 6

### EXAKTA LIGHT SCREENS

When ortho- or panchromatic material is used, Exakta Screens help to bring out correct tone values. The **Yellow Screen** for orthochromatic material. The **Green Screen** for panchromatic material. The **Blue Screen** for panchromatic material with strong sensibility to red, particularly for exposures by artificial light. The **Red Screen** for panchromatic and infra-red material, especially for distant exposures, and also for night effects in daylight.

Screens with corresponding slip-on mounts are available, for the various diameters of the lenses. When ordering, please state name and aperture of lens, and in case of yellow screens whether light, medium or dark is wanted.

<b>Yellow.</b>	Light or Medium Density, for $f/3.5$ lenses ..	..	12	6
Ditto	ditto $f/2.8$ lenses ..	..	15	0
Ditto	ditto $f/1.9$ ,, ..	..	25	0
<b>Green or Yellow Green,</b>	for $f/3.5$ lenses ..	..	12	6
Ditto	ditto $f/2.8$ lenses ..	..	15	0
Ditto	ditto $f/1.9$ ,, ..	..	30	0
<b>Red or Blue,</b>	for $f/3.5$ lenses ..	..	12	6
Ditto	ditto $f/2.8$ lenses ..	..	15	0
Ditto	ditto $f/1.9$ ,, ..	..	30	0

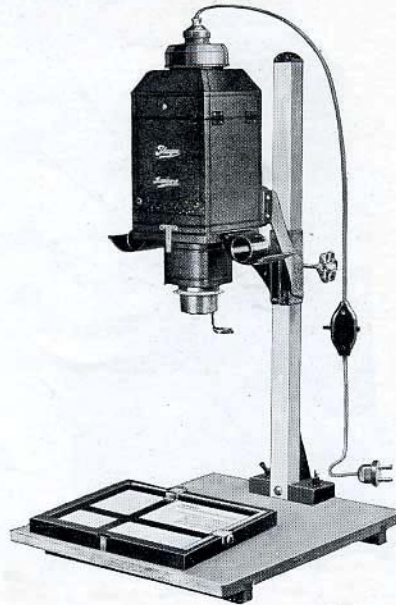
Always state for which lens required.





## Standard Exakta Enlarger

This is used in conjunction with the lens of the "Exakta," which is unscrewed from the camera and screwed into the front of the enlarger. Coarse focussing is done by raising or lowering the lamp house, and fine focussing by the helical mount. Films need not be cut into single pictures as a very practical film channel is provided. Films will not be affected by heat, as there is a hinged top, which can be left open for ventilation except when actually exposing. A glass mask is supplied for "Exakta" size (V.P.) negatives. A safety switch is embodied in the flex. Enlargements from  $4 \times 6\frac{1}{2}$  cm. (V.P.) negatives can be made up to  $12 \times 10$  inches, or even larger. Baseboard and metal pillar are included in the price (lamp extra).



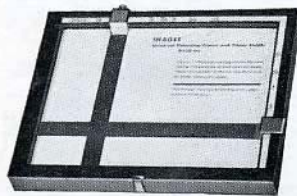
No. 5950, for use with lens of "Exakta" Camera	.. ..	£	s.	d.
Extra Glass Masks $24 \times 36$ mm., $3 \times 4$ cm., $4\frac{1}{2} \times 6$ cm., ..	each	5	15	0
100-watt Opal Lamps ( <i>state voltage when ordering</i> )	.. extra		7	0
			2	9

## The Kine-Exakta Enlarger

This enlarger is designed to take the lens of the Kine-Exakta, but it is otherwise identical with the Exakta Lumimax illustrated above.

No. 6040. For use with lens of Kine-Exakta Camera	.. ..	£	s.	d.
Extra Glass Masks $24 \times 36$ mm. .. ..	.. ..	5	15	0
100-watt Opal Lamp ( <i>state voltage when ordering</i> )	.. ..		7	0
			2	9

## Universal Enlarging Frames

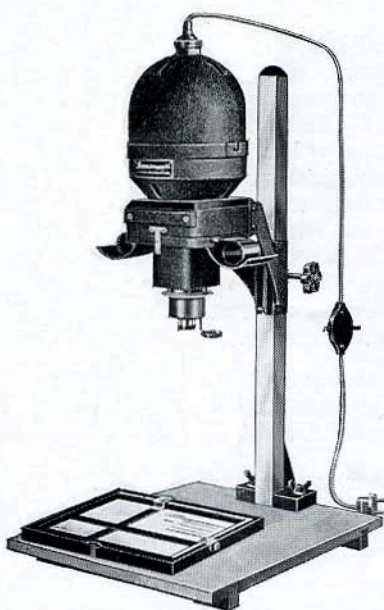


The universal paper-holders for enlarging are a necessary part of darkroom equipment. They have adjustable border masks, and are arranged to accommodate intermediate as well as standard sizes of paper. Special advantages are: Clearly visible scales showing the size of the enlargement. Device giving wide or narrow borders at will. Special pointed back-pegs to prevent movement on the easel.

No. 5567. Size $9\frac{3}{8} \times 7\frac{1}{8}$ in. ( $18 \times 24$ cm.)	.. ..	£	s.	d.
„ 5588. „ $14 \times 11$ in. .. ..	.. ..	1	1	0
			7	6

# LUMIMAX ENLARGERS

## New Model with Metal Lamphouse and Pillar, Condenser and Baseboard



M2

The Lumimax Enlargers M1 are specially designed to take the lenses of Exakta and Kine-Exakta cameras.

The Lumimax Enlarger M2 is supplied with a special  $f/4.5$  Anastigmat of 3 inch focus, and an additional stop  $f/6.3$ .

It is suitable for all negatives  $24 \times 36$  mm.,  $3 \times 4$  cm.,  $4 \times 6.5$  cm. and  $6 \times 6$  cm.

The carrier takes uncut film strips and holds them truly flat, while spare masks can also be obtained to take single cut negatives. The lamp house moves up and down on its pillar for coarse focussing, and a helical focussing mount with extra long thread for fine focussing.

The lamp house is well ventilated, and can be completely opened by detaching the upper half on a special bayonet catch. As wood becomes hot less rapidly than metal, the film carrier is made of wood.

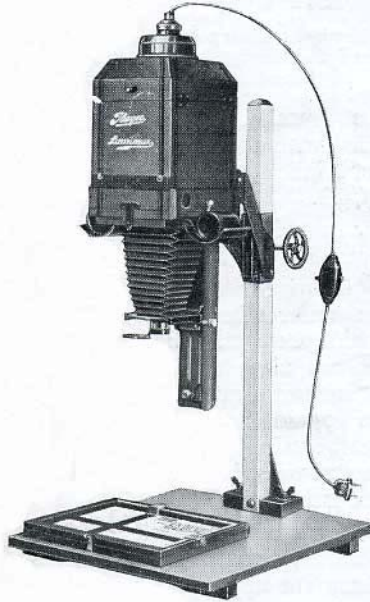
A condenser is provided to increase the light intensity, and collects scattered light which would otherwise be lost, and utilizes it to illuminate the negative. The contrast of the enlargement is also increased as a result, and the exposure considerably reduced.

The range of enlargement given by the Lumimax M1 is approximately  $1\frac{1}{2}$  to 6 diameters on the baseboard, while if the lamp house is turned round on its pillar and the baseboard weighted, enlargements up to 14 diameters from  $24 \times 36$  mm. negatives, may be made. Complete with baseboard, pillar, flex and plug but without lamp.

	£	s.	d.
M1 No. 6401. For use with lens of Exakta Camera $4 \times 6.5$ cm.	7	15	0
M1 No. 6402. Ditto. Ditto. Kine Exakta Camera $24 \times 36$ mm.	7	15	0
Extra Glass Masks $24 \times 36$ mm., $3 \times 4$ cm., $4 \times 6.5$ cm., $4.5 \times 6$ cm. and $6 \times 6$ cm. . . . .	7	0	
100-watt Opal Lamp . . . . .	2	9	
M2 No. 6450 Complete with $f/4.5$ Anastigmat Lens, base- board metal pillar, flex, 3-inch condenser and glass mask, but without lamp . . . . .	8	15	0
Extra Glass Masks, sizes as above . . . . . each	7	0	
100-watt Opal Lamp ( <i>state voltage when ordering</i> )	2	9	

## LUMIMAX ENLARGER

$3\frac{1}{4} \times 2\frac{1}{4}$  ins. ( $6 \times 9$  cm.)



This enlarger is constructed for negatives of all sizes up to  $2\frac{1}{4} \times 3\frac{1}{4}$  ins. ( $6 \times 9$  cm.). The inclusion of the condenser increases the intensity of the printing light. It also increases the contrast of the enlargement, but if a negative is already sufficiently contrasty, the condensing lens can be removed, and an opal glass placed in the lamp house to diffuse the light. With dense flat negatives, the condenser has the great advantage of increasing contrast and reducing the time of printing.

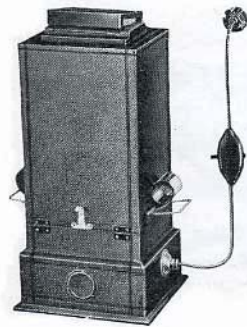
Glass negatives may also be enlarged if the glass mask holding the film is removed from the carrier.

Fine focussing is effected by rack and pinion. Complete with metal pillar, baseboard, flex and switch, but without lamp.

	£	s.	d.
6260. With Ihagee Anastigmat $f/4.5$ and $f/6.3$ stop, 10.5 cm. focus .. .. .	9	12	6
— Extra Glass Masks $3 \times 4$ cm., $4\frac{1}{2} \times 6$ cm., $6 \times 6$ cm., each .. .. .		7	0
— 100 Watt Opal Lamps ( <i>state voltage when ordering</i> ) .. .. .		2	9

## FIXED FOCUS ENLARGER

For  $24 \times 36$  mm. Film Negatives

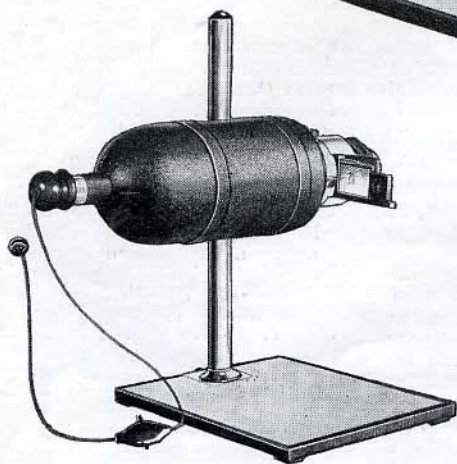
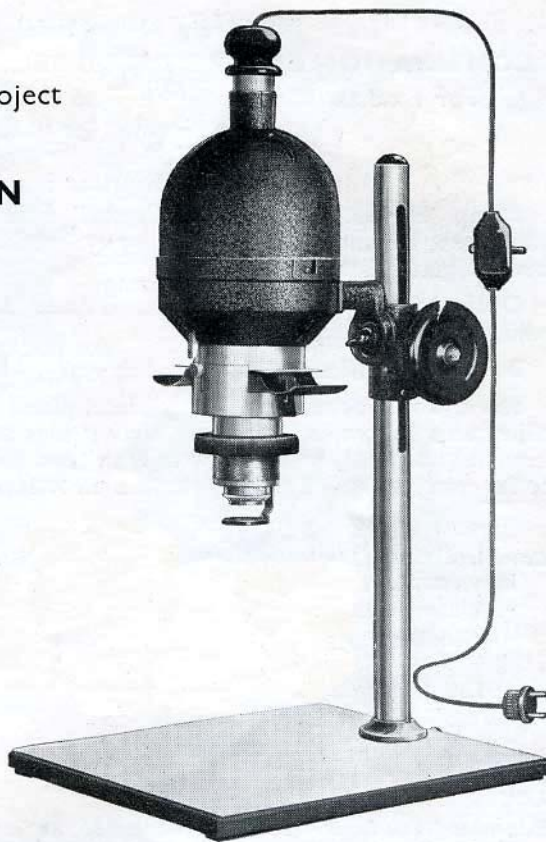


This Enlarger is designed for producing enlargements of  $3\frac{1}{2} \times 2\frac{1}{2}$  in. ( $6 \times 9$  cm.)  $\frac{1}{4}$ -plate ( $9 \times 12$  cm.) and postcard ( $9 \times 14$  cm.) sizes from the miniature  $1 \times 1\frac{1}{2}$  in. ( $24 \times 36$  mm.) negatives on cinema film. The film strip is placed uncut in the instrument and held flat with a special device. The image may be examined on a hinged ground-glass screen before exposing, while the printing paper rests on a plate-glass sheet and is pressed into contact with it by means of a rubber pad. A 40-watt opal lamp is used, and a condensing lens ensures efficient use of the light.

	£	s.	d.
No. 4925. Complete with Trioplan Anastigmat $f/4.5$ (2 in. focus), flex with switch and plug and interchangeable upper portion for the larger print sizes .. .. .		6	6 0
40-watt Opal Lamp .. .. . extra		1	10

## PROJECTION-LUMIMAX

Enlarge and Project  
with  
**PROJECTION  
LUMIMAX**



Duplex Lumimax as Projector

For enlarging Exakta negatives the Projection-Lumimax is recommended. This apparatus is used in conjunction with the high class lens of the Exakta and it is not necessary to purchase another special lens for enlarging. The Projection-Lumimax may also be used for home projection, thus giving two possibilities in one apparatus. One of the practical Universal Enlarging frames is strongly recommended for use.

# Projection Lumimax

Entirely New Model

## COMBINATION ENLARGER AND PROJECTION LANTERN

For Exakta, Kine Exakta, 6 × 6 cm. and smaller sizes  
enlarging to 15 times linear

### Specification :

**Lamp House.** Aluminium. Crystalline finish, adjustable tube for adjustment of lamp, with flex and safety switch. Spring film stage, with bevelled glass plate.

**Optical System.** Four-inch Double Plano Condenser. Helicoidal fine adjustment, and ruby screen.

**Baseboard.** Made of hard wood for 12 × 10 paper.

**Stand and Focussing.** Heavy nickel-plated pillar support with rack adjustment for coarse focussing. Body swings at right angles, on a stout quadrant and fixed by heavy butterfly nut and bolt to allow for projection, or for enlargements of greater size than 12 × 10.

### Prices :

<b>Complete Outfit</b> , including connection to lighting circuit with switch (but without lamp), stand, baseboard and condenser :	£	s.	d.
Without objective, with mount for Exakta lens .. .. .	11	0	0
With Ihagee Anastigmat <i>f</i> /4.5, 7.5 cm. focal length, with iris diaphragm .. .. .	13	0	0
Lamps for enlarging, 100-watt .. .. .		2	9
„ „ projection, 100-watt .. .. .		10	9
„ „ „ 150-watt .. .. .	1	0	0

### ACCESSORIES

<b>Extension Tube for Projection</b> , as illustrated. An important expedient if perfectly uniform illumination of screen picture is desired. Indispensable for projector lamps and should also be used with all slightly frosted lamps .. .. .	17	6	
<b>Spare Glass Masks</b> , supplied in all sizes from substandard film up to 2½ × 2½ in. (6 × 6 cm.), in case .. .. . each	7	6	
<b>Glass Masking Frames for Cut Films</b> , supplied in all sizes from substandard film up to 2½ × 2½ in. (6 × 6 cm.) .. .. . each	6	0	
<b>Sliding Carriers for Lantern Slides</b> , suitable for 2 × 2 in. (5 × 5 cm.) or 2½ × 1½ in. (4.5 × 6 cm.) slides .. .. . each	6	6	
<b>Double Extension Connection</b> for reducing to three-fourths of original size. Important for reducing 2½ × 2½ in. (6 × 6 cm.) negatives to 2 × 2 in. (5 × 5 cm.) lantern slides .. .. .	1	5	0
<b>The Duplex Lumimax is also made for use with Kine-Exakta negatives 24 × 36 mm. (see page 3) without lens .. Price</b>	11	0	0
<b>Universal Enlarging Frames</b> , white inside for sharp focussing, open like a book, and always keep the paper flat. The portions of the paper covered by the edge remain white to provide a nice border for the enlargement. Displaceable steel masks. For all sizes up to 14 × 11 in. (see page 16) .. .. .	1	7	6

# ACCESSORIES FOR KINE EXAKTA

## FILM PRINTER

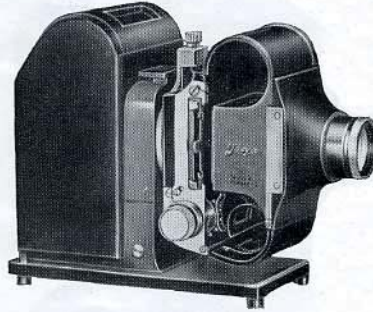


A special miniature film printer is very convenient when printing film-strip transparencies, on positive film. The strips of positives are then shown in a suitable projector. The instrument is low in price, and particularly simple in use.

Price .. .. £3 0 0

## PROJECTION LANTERN

A new projection lantern which is specially suited to the projection of colour films on account of its great light output. It is designed to take 2" square glass slides, or film strips in the  $\frac{3}{4} \times 1$ " and  $1 \times 1\frac{1}{2}$ " sizes. A triple condenser with heat screen, concave mirror, and rotating device for upright or longitudinal pictures are fitted, and a special device for moving the film strips continuously or picture by picture, completes the practical design. A large-aperture projection lens gives a very high light output on the screen, and makes the projector one of the most efficient on the market.



Price .. .. £10 0 0  
Case for same .. .. 2 10 0

## EXAKTA HANDBOOKS



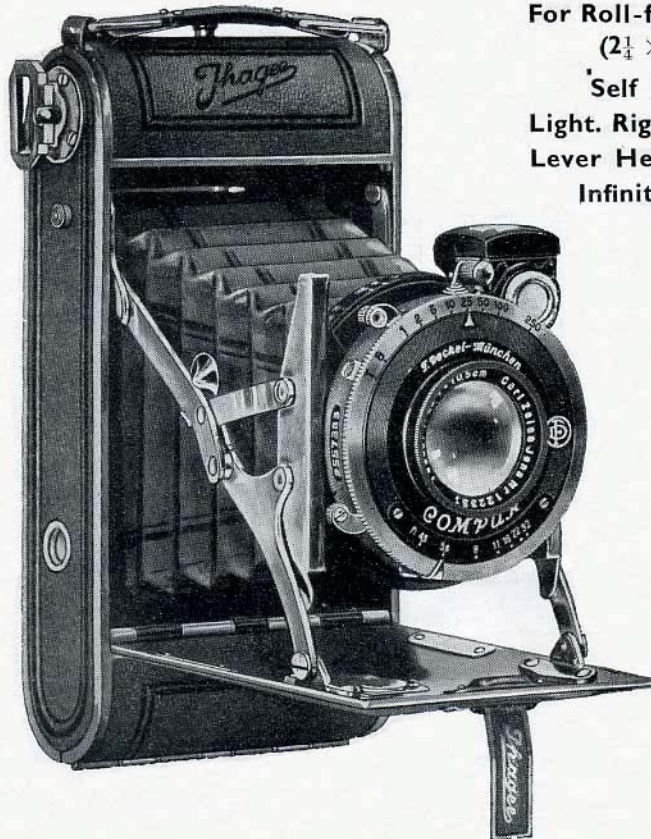
**The Standard Exakta Handbook.** A treatise on photography in general, and giving full details of the Standard Exakta Camera, and its general working .. 3/6

**The Kine-Exakta Manual.** A similar work but explaining the Kine-Exakta camera, and giving full particulars of the various branches of work that can be

carried out with this camera .. .. 5/-  
Both these Manuals have been compiled by our expert, Gerhard Isert.



# The AUTO-ULTRIX



For Roll-films 6 × 9 c.m.  
(2¼ × 3¼ in.)

Self Erecting  
Light. Rigid. Automatic.  
Lever Helical Focussing  
Infinity to 5 feet.

## Specification :

Aluminium body, nickelled struts. Film pressure plate, double rollers ensuring absolute flatness of film.

Hinged back, 2 tripod bushes, Cable release, Brilliant and folding frame finders. Covered leatherette, leather bellows. Safety cover to window for Pan. films.

## Prices :

No. 4860 M.V. With <i>f</i> /4.5 Ihagee Anastigmat Lens and 3-speed Shutter, 1/25, 1/50, 1/100th second and T. and B. exposures .. ..	£	s.	d.
	4	4	0
No. 4860 M.S.P. With <i>f</i> /4.5 Ihagee Anastigmat Lens and Prontor II shutter with delayed action—speeds 1 second to 1/150th second and T. and B. exposures .. ..	5	10	0
No. 4860 M.S.C. With <i>f</i> /4.5 Ihagee Anastigmat Lens and Compur Shutter with delayed action—speeds 1 second to 1/250th second and T. and B. exposures .. ..	6	6	0

# The "AUTOLETTE"

Precision Made—V.P.  $2\frac{1}{2} \times 1\frac{3}{8}$  ins. ( $4 \times 6.5$  cm.)



The appearance of the "AUTOLETTE" may easily lead one to imagine that it would only make pictures  $3 \times 4$  cm. like so many of the small cameras in use, but nevertheless it is a self-erecting roll film camera and will make the standard size pictures  $2\frac{1}{2} \times 1\frac{3}{8}$  in. ( $4 \times 6.5$  cm.) This is a size that yields beautiful direct pictures suitable for albums, frames or silhouettes, without enlarging.

These pictures are twice the size of those made in the  $3 \times 4$  camera and owing to the superiority of the longer focus lens in the "AUTOLETTE" they are in every respect infinitely better for enlarging.

### Specification :

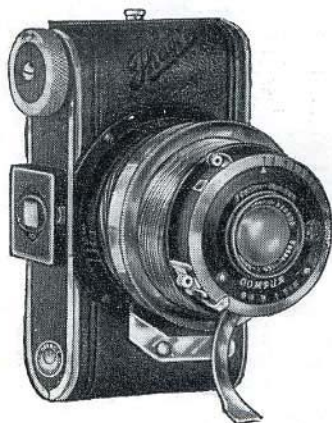
Automatic action (self-erecting) and the Optical View Finder opens with the camera, the lens panel opens out parallel and so eliminates

any strain on the bellows. The focussing scale is over the objective and is easily read from above. The body is made of one piece of aluminium with hinged back. Size  $4\frac{1}{2} \times 2\frac{3}{8} \times 1\frac{3}{8}$ . Weight only 11 ozs.

No. 2850.	With $f/3.5$ Ihagee Anastigmat and Prontor II Shutter	£	s.	d.
	speeds 1 second to $1/175$ th second, and delayed action		5	17
	release .. .. .			6
	Soft Leather Case. .. .. .		6	6

# The "PARVOLA"

V.P.  $2\frac{1}{2} \times 1\frac{3}{8}$  ins. ( $4 \times 6.5$  cm.) Standard Size :



This miniature film camera has no bellows and is therefore practically indestructible. Its usefulness is universal, and it is equally well suited for portrait, landscape and architectural work. A helical mount with patented double thread provides a long extension and permits close focussing up to 20 in. distance.

### Specification :

Metal body covered with leather. Lens support remains on camera even if closed. Optical view finder, automatic shutter lock for preventing accidental release. Silk carrying cord for neck. Size including lens projection  $4\frac{3}{8} \times 2\frac{3}{8} \times 2$  ins. Prices including soft leather case.

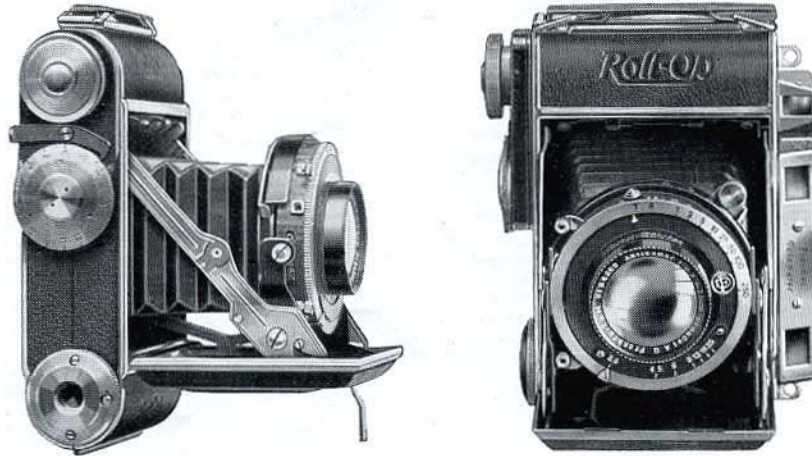
No. 1350 M.S.C. Ihagee Anastigmat  $f/4.5$  7 cm. focus, Compur shutter 1 sec. to  $\frac{1}{1000}$ th. T. and B. with delayed action £9 9 0

No. 1350 ESRC. Zeiss Tessar  $f/2.8$  7.5 cm. focus, Compur shutter 1 sec. to  $\frac{1}{1000}$ th. T. and B. with delayed action £15 15 0



# Plaubel *Roll-Op*

For Roll Films, 6 × 9 cm., Standard 2½" × 3¼"  
16 pictures, 4.5 × 6 cm. on each spool. Automatic Film Numeration.



The "Roll-Op" is a beautiful precision-made instrument finished in first-class style, with All-Metal Body, covered leather, leather handle and sling. Dimensions 5 × 4 × 1½ ins. Weight 26 ozs.

Coupled Range Finder for sharp focussing.

Focussing Range 3 feet to infinity. Direct Vision Finder. Tripod Bush. Improved Spool Holders for easy loading.

Fitted with the famous Plaubel

**ANTICOMAR 4-LENS ANASTIGMAT *f*/2.8, 75 mm.**  
focus, in Compur Rapid Shutter with Delayed  
Action 1 sec. to 1/400th sec.; also T. and B.

## AUTOMATIC FILM NUMERATOR

This is of great value for Pan. films, making it unnecessary to look for the number in the window, which has a protecting cover.

	£	s.	d.
Price :	21	0	0
Yellow Filters—Light, Medium or Dark	1	7	6
Green Filter	1	12	6
Supplementary Lenses for close-ups	1	5	0
Solid Leather Case, velvet lined, with Lock and Key	17	6	

# PLAUBEL MAKINA II. $6.5 \times 9$ ( $2\frac{1}{4} \times 3\frac{1}{4}$ in.)

The only plate Camera with Coupled Range Finder



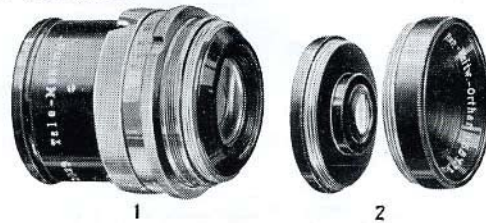
### Specification :

Finished in dull black enamel with nickel plated parts, Coupled Focussing Range Finder, Plaubel Anticomar Lens, 10 cm.,  $f/2.9$ . Compur Shutter, 1 sec. to  $\frac{1}{2000}$  sec., T. and B. and delayed action; Newton Finder and Frame Finder. Three first quality Metal Slides. Price £39 10 0

Solid Leather Case, with Lock and Key .. .. .	£1 15 0
Film Pack Adapter .. .. .	0 17 6
Makina Roll Holder, for standard $3\frac{1}{4} \times 2\frac{1}{4}$ in. films for eight or sixteen pictures	2 12 6
Dark Slides .. .. .	0 5 0
Braided Leather Sling .. .. .	0 3 6

### Interchangeable Lenses for Makina II.

In this model the back and front combinations have to be unscrewed and the other lenses screwed in their place.



No. 1. Tele-Makinar, $f/6.3$ , 21 cm., in leather case .. .. .	£13 13 0
No. 2. Rapid Wide-Angle Orthar, $f/6.8$ , 7.3 cm. in leather case .. .. .	8 0 0

### Supplementary Lenses in Leather Cases

T 1.5, for photographs at a distance of about 60 cm. .. .. .	1 2 6
R 0.1, for photographs, small objects (stamps, etc.) in natural size .. .. .	1 7 6
Yellow Filter, Light, Medium or Dark .. .. . each	1 11 6
Green, Red or Blue Filters .. .. .	2 0 0
Finder Frame for use with Tele-Makinar Lens .. .. .	0 4 0
Ditto, for use with Newton Finder .. .. .	0 4 0
Lens Hood .. .. .	1 0 0

NOTE. Always use  $6\frac{1}{2} \times 9$  cm. plates for these cameras.

## PLAUBEL MAKINA IIS. $6.5 \times 9$ ( $2\frac{1}{4} \times 3\frac{1}{4}$ in.)

The only plate Camera with Coupled Range Finder



Photographs of today that claim to be life like must necessarily include an impression of the bustle of modern life. To make the rapid interchanging of lenses still more rapid, the new II S Makina has been designed and produced, in which the lens is mounted in a special ring in front of the shutter. The ring is cut with a helical thread of new type which always engages in the shutter ring grooves without the least delay, and the new lens mount combines the optical accuracy of the helical focussing mount with the rapid interchanging of other systems.

The Makina II S stands out on this account alone from other cameras with rapid interchangeable lenses.

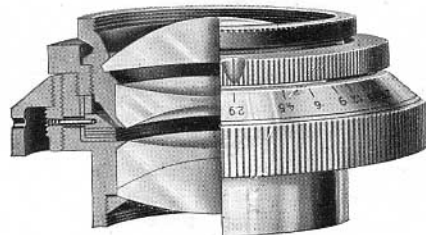
The new type of lens mount is naturally of the greatest value to the press-photographer, and the owner of a Makina II S will find that it opens up many new opportunities and makes it possible to get the utmost from the lenses supplied for the camera. In the new model Makina, the lenses available include the new Tele-Makinar with full aperture  $f/4.8$  and focal length  $7\frac{1}{2}$ " (19 cm.). This lens gives semi-automatic focussing with the coupled distance meter, and has the double advantage of rapid interchanging and very large full aperture.

The new Makina II S is a true instrument for rapid snapshot work, taking a ( $6\frac{1}{2} \times 9$  cm.)  $3\frac{1}{2} \times 2\frac{1}{2}$  negative, and having the twin advantages of very wide range and simplicity in handling.

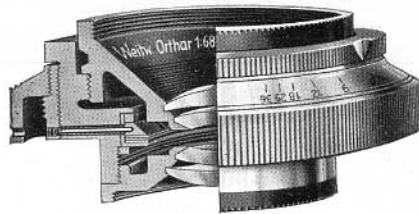
Price .. .. . £47 10 0

NOTE. Always use  $6\frac{1}{2} \times 9$  cm. plates for this camera.

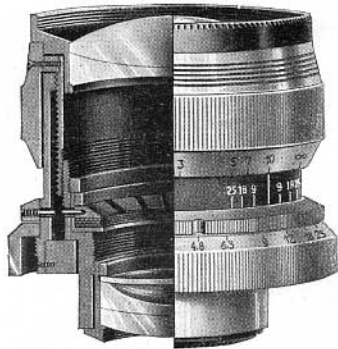
# PLAUBEL MAKINA IIS. $6.5 \times 9$ ( $2\frac{1}{4} \times 3\frac{1}{4}$ in.)



Anticomar  $f2.9$



Wide Angle  $f6.8$



Tele-Makinar S.  $f4.8$

## THE MAKINA LENSES

Just as the Makina camera is original in design and construction, so also are its lenses of special and original design.

### THE STANDARD LENS.

The Plaubel Anticomar of full aperture  $f2.9$  and focal length 4" (10 cm.) is extremely fast, and produces brilliant images of high plastic effect. This lens may be used universally for day or night photography, and in brilliant sunshine as well as dull weather.

### THE WIDE-ANGLE LENS.

The Rapid Wide-angle Orthar lens has an angle of field of some  $70^\circ$ , and has a full aperture of  $f/6.8$  with a focal length of  $2\frac{7}{8}$ " (7.3 cm.). It is specially useful for interior exposures, for photographing tall buildings and for snapshot work. In the last case, the very great depth of focus is a distinct advantage.

### THE TELE-MAKINAR S.

This is a special lens with a rapid-changing adapting ring, and has a full aperture of  $f4.8$  with a focal length of  $7\frac{1}{2}$ " (19 cm.). It is specially designed for use with the new Makina IIS. The accuracy of detail is very high, and the lens is specially useful for news-photography, sporting events, natural history photography in the open, and—to be brief—for all occasions where good definition of a distant object is required. Under these circumstances, the Tele-Makinar S. will come through all tests with flying colours.

#### Specification :

The front of camera-range finder and all fittings are chromium plated, coupled Focussing Range Finder, Parallax adjustment to Newton Finder, and Frame Finder.  $F2.9$  Plaubel Anticomar Lens 10 cm. focus. Compur shutter, giving  $\frac{1}{2000}$ ,  $\frac{1}{1000}$ ,  $\frac{1}{500}$ ,  $\frac{1}{250}$ ,  $\frac{1}{125}$ ,  $\frac{1}{60}$ ,  $\frac{1}{30}$ ,  $\frac{1}{15}$  and 1 second, also T. and B. with delayed action. Three first quality metal dark slides.

Price .. .. . £47 10 0

### Interchangeable Lenses for Makina IIS.

Tele-Makinar S. $f4.8$ , 19 cm., in Leather Case .. .. .	£22 10 0
Rapid Wide Angle Orthar $f6.8$ , 7.3 cm., in Leather Case .. .. .	12 12 0

### Supplementary Lenses in Leather Cases

T 1.5, for photographs at a distance of about 60 cm. .. .. .	£1 6 6
R 0.1, for photographs, small objects (stamps, etc.) in natural size .. .. .	1 11 6
Yellow Filter, Light, Medium or Dark .. .. . each	2 0 0
Green, Red or Blue Filters .. .. .	2 10 0
Finder Frame for use with Tele-Makinar Lens .. .. .	4 0
Ditto, for use with Newton Finder .. .. .	4 0
Lens Hood .. .. .	1 0 0

### Accessories :

Solid Leather Case for Camera Slides and Roll Holder with Lock and Key .. .. .	£1 15 0
Ever-ready Case to carry Camera and Roll Holder .. .. .	2 15 0
Film Pack Adapter .. .. .	17 6
Makina Roll Holder, for standard $3\frac{1}{4} \times 2\frac{1}{4}$ in. films .. .. .	2 12 6
Dark Slides .. .. .	5 0

## Accessories for the Makina

### PLAUBEL FOCAL PLANE SHUTTER

A new type of focal plane shutter which fits in the back of Makina cameras and then the dark slide or roll holder goes in the back of shutter frame. Speeds up to 1/1000th second. This is a very useful adjunct to these cameras.

#### Prices

For Makina II .. .. .	£6 10 0
„ Makina II S .. .. .	5 15 0

(Ready in June)

### THE PLAUBEL MAKIGRAPH

This instrument is an unusually satisfactory combination of a high-class enlarger and a copying bench. The Makina camera is used in conjunction with the instrument, and apart from the double condenser and diffusion disc delivered with the Makigraph a wide range of other accessories are available to the user. Particulars will gladly be sent on request.

Price, with 103 mm. double condenser and for 100-watt lamp (without lamp) .. .. . £26 10 0

### EXTENSION PIECE

This extension specially made for use with the Makina, converts it into a camera with a triple extension and rack and pinion focussing. By this means, the Tele-Makina lenses may be used in conjunction with various supplementary lenses to increase the magnification. Details on request.

Price, with 2 small tripods .. .. . £12 12 0



### PANORAMA HEAD.

A very useful piece of apparatus giving a rotation of 360°. Price, £2 5 0

### VACUBLITZ.

A fitting which is screwed into the camera back, giving a synchronous flash up to  $\frac{1}{20}$  sec. Price £1 2 6



## Plaubel Roll Film Holder

3½ × 2¼ in. (6 × 9 cm.)

Giving 8 or 16 pictures on standard size 3½ × 2¼ film.

Precision made, with Automatic Counter which shows on a dial the number of the exposure without uncovering the red window. This feature makes the Roll Holder perfectly safe for Pan. Films.

Covered in real leather with nickel-plated fittings.

No. 1. For Makina II and II S. Cameras £2 12 6

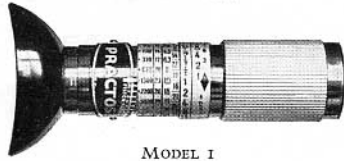
No. 2. For Cameras taking standard size 3½ × 2¼ dark slides, i.e., Zeiss Ikon Voigtländer and Ihagee Cameras £2 12 6

State make of camera when ordering.

## "Practos" Exposure Meters For "Still" and "Cine" Photography



MODEL II  
Actual View Crystal Clear in Sky  
Blue Screen



MODEL I

The MODEL I is simplified by omission of the View Finder and depth of focus Scales.

In Leather Pouch .. .. Price £1 2 6

The New Model "Practos" II is the most efficient and simplest of all Exposure Meters, and is a beautiful piece of optical precision work.

The actual view is seen in a perfect optical View Finder, which renders it extremely simple to gauge the light that is reflected from the subject.

Speeds.—Film and Plate Speeds in both H. & D. and "Scheiner" are legibly engraved on the instrument.

"Practos" is scaled for both "Still" and "Cine."

Filter Factors are also engraved on the scale.

In Leather Pouch .. .. Price 27/6

## The Junior "Practos" Exposure Meter



The Junior "Practos" is the simplest of all Optical Exposure Meters. Inside the body is a scale, physiologically adapted to suit normal vision. The darkest number in the instrument that is readable is the correct time of exposure in seconds or minutes respectively at  $f/6.3$  and 2,700 H. & D. ( $-26^\circ$  Scheiner) and no calculations are necessary for other speeds of plates and films.

It is not only extremely simple but absolutely

true, and is therefore always ready and always sure.

Film and Plate speeds are given in H. & D. and Scheiner.

In Leather Pouch .. .. Price 15/-

## Photo-Electric Exposure Meters



<b>OMBRUX</b> Photo-Electric Exposure Meter for Still	£ s. d.
Camera use .. .. .	3 7 6
<b>BLENDUX</b> Photo-Electric Exposure Meter for	
Cine Camera use .. .. .	3 7 6

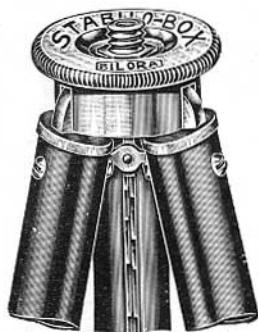
Both models are complete in Ever-ready leather case with instruction book and tables.

**SIXTUS.** Gives the correct time of exposure for any, even the most difficult photographic subjects, indoor, or outdoor against the light photographs, snow landscapes, or high mountain scenes.

Price in bakelite case with full instructions .. .. . £ s. d.  
5 5 0



## "Stabilo" Tripods

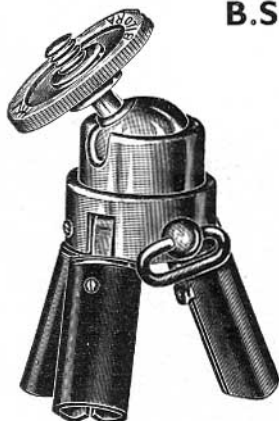


The sections of these tripods are of D-shape telescopic tubes, designed in a novel and ingenious manner giving great rigidity and ensuring absence of whip.

Beautifully finished, outer tubes black enamelled, inner tubes nickel-plated, and superior to any previously offered.

- No. 1103. 3-section. Length closed  $15\frac{1}{2}$  ins.,  
 extended 38 ins. Weight 16 ozs. .. Price 6/6
- No. 1104. 4-section. Length closed  $15\frac{1}{2}$  ins.,  
 extended 48 ins. Weight 20 ozs. .. Price 8/6
- No. 1105. 5 section. Length closed 14 ins.,  
 extended 49 ins. Weight 20 ozs. .. Price 10/6

## B.S. "Stabilo" Tripods



Similar model as described above fitted with a Ball and Socket Revolving Head, enabling the camera to be easily fixed in any position, adjusted by a slight turn of the locking screw.

- No. 1104K. 4 section. Length closed, including  
 ball and socket, 17 ins.; extended 49 ins. Price 13/6  
 Weight 22 ozs.
- No. 1105K. 5 section. Length closed 14 ins.;  
 extended 49 ins. .. Price 15/-  
 Weight 24 ozs.

## "Bilora" Tripods



Machine finished strong brass tubes, with reversible head for either British or Continental threads. Sections fitted in by screws, not rivets. The joints in the head are evenly held by a steel ball on each side of the leg, and all back lash is obviated.

- |                                                                                                                | s. | d. |
|----------------------------------------------------------------------------------------------------------------|----|----|
| No. 240. 4 section. Closed $14\frac{1}{2}$<br>ins., extends 45 ins., height 48 ins.,<br>weight 22 ozs. .. .. . | 10 | 6  |
| No. 250. 5 section. Closed $15\frac{1}{4}$ ins.,<br>extends 52 ins., height 51 ins.,<br>weight 26 ozs. .. .. . | 12 | 6  |

### FIVE FEET HIGH

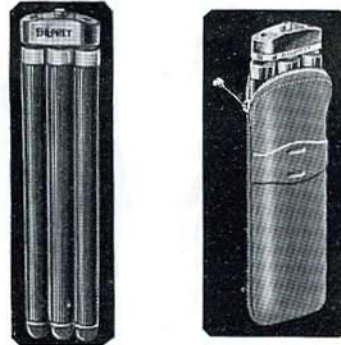
- No. 254. 5 section. Particularly useful for small Cine cameras, as the height is 5 feet, the tubes extra stout and extremely rigid. Size closed 16 ins., weight 32 ozs. .. .. . 16 0
- No. 654. 5 section. A similar tripod but fitted with strong ball and socket head. Size closed  $17\frac{1}{2}$  ins., weight 34 ozs. .. .. . 21 0

## “Stabilo” “Pochette” Tripod

The most elegant and best of all pocket tripods. Special light, strong alloy (not aluminium).

**Exceptionally Steady** — very light and strong. Suitable for any camera. Outer tubes are ribbed and are fixed by screws into the hinged members. l. s. d.

- No. 17. 7-draw. Size closed 9 ins., extends 45 ins.  
Weight 11 ozs. . . . . **1 10 0**
- No. 16. 10-draw. Size closed 7½ ins., extends 48 ins.  
Weight 12 ozs. . . . . **1 16 0**
- No. 15. 9-draw. Very tall when extended. Size closed 10 ins., extends 60 ins.  
Weight 15½ ozs. . . . . **2 2 0**



Each Tripod supplied with rubber toes and leather case.

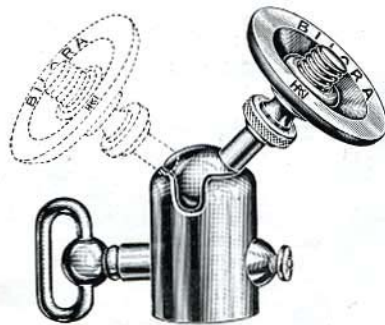
## Bilora Chestpod

Made of light metal and fitted with ball and socket. Particularly useful with miniature cameras. The bending device of the ball and socket allows the taking of photographs at eye level either horizontally or vertically. The Chestpod extends to treble its length and is supplied with neck straps and a leather purse.

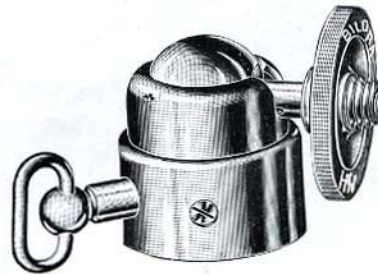


Price .. 13/6

## Ball and Socket Heads



No. 1



No. 2

- |                                                                                  |         |           |
|----------------------------------------------------------------------------------|---------|-----------|
| No. 1. For Small Cameras                                                         | .. .. . | Price 3/6 |
| No. 2. Heavy Pattern for large cameras and also Panorams for Horizontal pictures | .. .. . | .. 6/6    |



## LIGHT METAL TRIPODS



A new series of tripods made from hard white metal (not aluminium). Very strong and light but very efficient. The inner tubes are polished and the outer tube is dull enamelled.

No.		s.	d.
544	4-draw, closed 15½ ins. ; open 49½ ins. Weight 11½ ozs.	13	6
555	5-draw, closed 14½ ins. ; open 53 ins. Weight 12 ozs.	15	6
577	7-draw, closed 11½ ins. ; open 49½ ins. Weight 14 ozs.	18	0

### Kine Tripods

Made in hard light metal, giving great stability, although light in weight. The outer tubes with ribbed finish and the inner tubes chromium plated. Fitted with panoramic head, giving a complete circle and also tilting action, so that camera can be used either horizontally or vertically. The metal toes have also rubber fittings for use on slippery surfaces.



No.		£	s.	d.
401	4-draw, size closed 20 ins., extends 60 ins. Weight 3½ lbs	5	15	0
301	3-draw, extra heavy model, size closed 27 ins., extends 70 ins. Weight 5 lbs.	7	7	0
—	Cloth Cases for either model		12	6



### Universal Ball and Socket Tripod

Made of the same tubes as Kine Tripod, hardened light metal with ribbed permanent coating and reversible feet. A special ball and socket of high precision, revolving horizontally and allowing for panoramic movement on any oblique plane. This last movement is made possible by a platform pivoting on the ball axis. This will be appreciated by the advanced photographer.

No. 404 .. £4 15 0

SCHNEIDER  
OPTIK  
KREUZNACH



# 1000000 SCHNEIDER LENSES

Price List Post Free  
on Request

in two decades