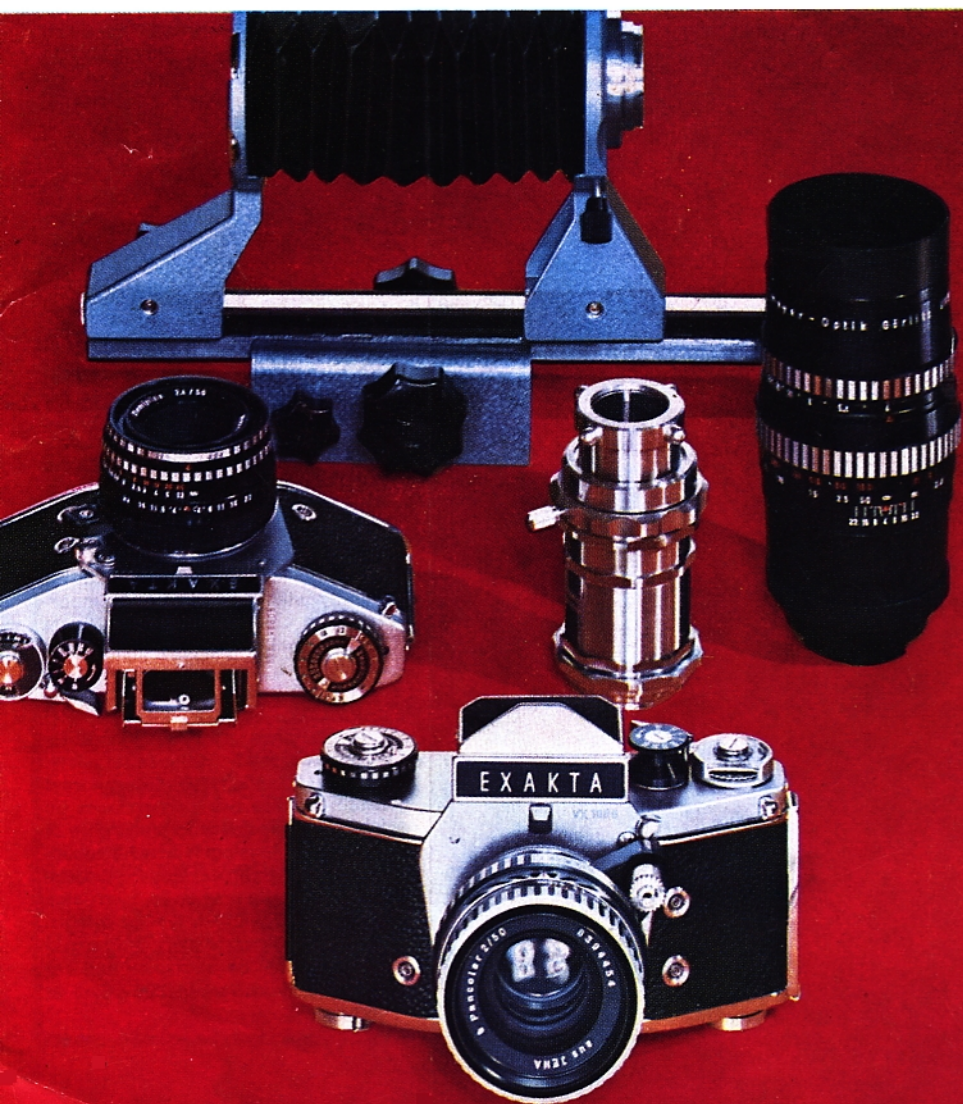


EXAKTA

Original
EXAKTA
Dresden

VX1000





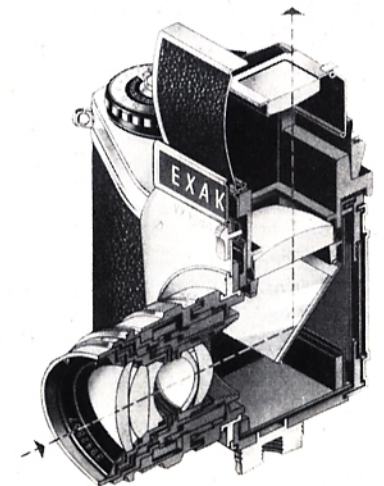
Highly developed but not over-elaborated: that's the EXAKTA VX 1000. Despite its fantastically wide field of operation it remains delightfully simple to operate; its ease of handling will be a welcome surprise to inexperienced beginners and the most exacting expert alike. This is a camera which can be adapted to perform almost every photographic task imaginable; with 33 years of constant evolution behind it, even in its present stage of highly developed perfection it still remains true to the basic design principle of all EXAKTA cameras: parallax-free reflex focusing. With a single glance into the reflex viewfinder and the minimum of control settings, you can be certain of obtaining a photograph with the sharpest possible definition, optimum depth of field and superb pictorial quality. Right from your very first trial exposures you will see the superiority of the EXAKTA method: your pictures will be better composed, and give you far more pleasure than ever before. No matter what type of work you do with your EXAKTA VX 1000, you can always be absolutely certain that the final picture will be identical with the viewfinder image, since both are produced by one and the same lens. You will never lose part of the picture through differences in lens coverage, whatever you see in the reflex finder, will be there in the finished photograph. This invaluable quality will of course be all-important for taking close-up pictures and photomicrographs, when using special lenses and other accessories; there will be no need to use costly optical focusing aids, since the picture can always be framed and focused accurately in the reflex viewfinder. Simplicity and economy: these are the two cornerstones on which the world-wide leadership of the EXAKTA system is based. The constant painstaking development of the EXAKTA system is your guarantee that your EXAKTA VX 1000 camera and all its accessories will remain proof against obsolescence and depreciation throughout the years to come.

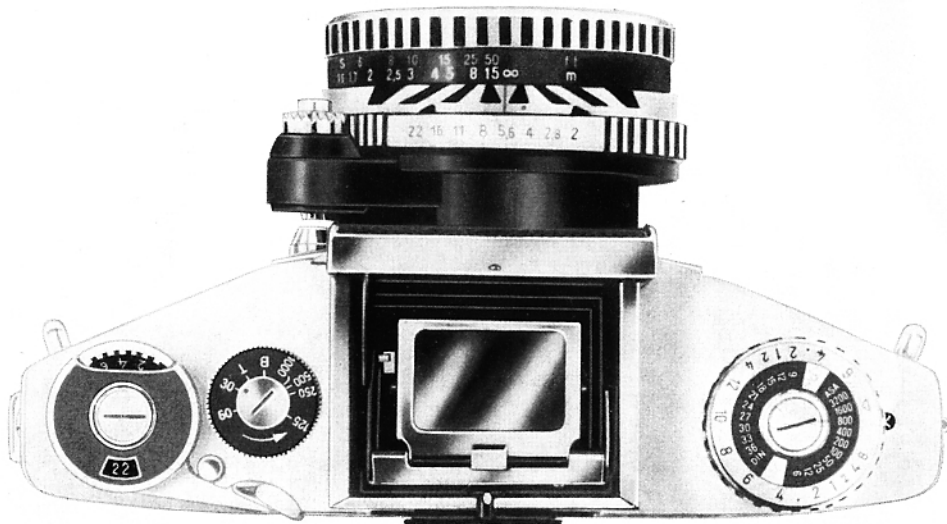


EXAKTA

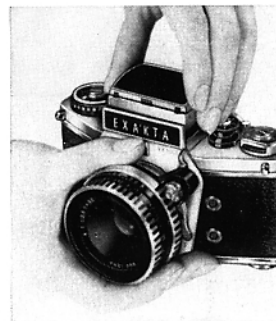
VX 1000

**A highly-developed
miniature reflex camera:
the centrepiece
of the pioneering
EXAKTA system
from Dresden**





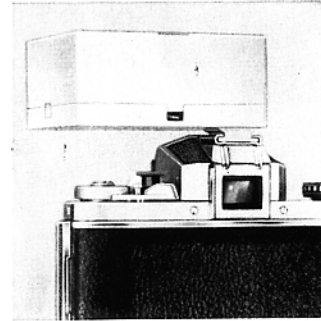
Concerning the general equipment and finish of the EXAKTA VX 1000 the following brief details must suffice; carefully-shaped, easy-to-handle body; highly durable covering; exposed metal parts chrome-plated and lacquered. Tripod bush with broad bearing surface; carrying-strap eyelets. Weight of EXAKTA VX 1000 without lens 26 oz. (700 g). Dimensions of camera with Finder Hood closed approx 93 mm x 153 mm x 49 mm (3³/₄ x 6 x 2 inches)



Exchanging the viewfinder unit



Eyepiece Cup



Accessory Shoe

Interchangeable viewfinder systems

Among the many advantages of the EXAKTA VX 1000 are its interchangeable viewfinder systems. For particular types of work, the familiar waist-level Finder Hood can be detached with a single operation and replaced by the Penta Prism or the Lens Magnifier. It is also possible to adapt the focusing system perfectly to the work in hand by exchanging the focusing screen itself.

Finder Hood

Ground-Glass Screen and supplementary magnifier together give $\times 6$ magnification of reflex image, providing speedy and accurate focusing for maximum definition. Brilliant, upright reflex image, easily viewed with both eyes. The Finder Hood should be used for all subjects which are not moving rapidly, those situated below eye level and for taking pictures from a tripod, Repro Unit or similar fixture or through a microscope.

Penta Prism

This gives a $\times 4$ -magnification, upright and laterally-correct image when the camera is held either horizontally or vertically. The camera is used at eye level, for sighting the subject directly. Moving subjects move in the same direction in the Penta Prism as they do in reality, making this the ideal viewfinder for all types of action photography (especially when "panning" the camera to follow very rapidly moving subjects). Accessories: flexible Eyepiece Cup for shielding eyepiece against stray light, also designed for fitting vision-correcting lenses (a useful aid for spectacle wearers); Accessory Shoe for attaching supplementary equipment.

Instant return mirror: After every exposure the mirror returns to its reflex position, so making the viewfinder image permanently visible except during the actual exposure. When the shutter has been released, a red warning indicator is visible in the viewfinder, reminding the user to cock the shutter and wind the film again.

Fresnel Lens with Microprism field

The focusing systems of the EXAKTA VX 1000 may, instead of the ground-glass screen, be fitted with the bright image Fresnel Lens. It achieves high brilliance and an even illumination of the whole reflex picture. For the usual ground-glass focusing the central matt ring is mainly used. For absolutely correct focusing, however, the microprism has been fitted within the ring. The extra brilliant image in this field serves for focusing in the same way as the ground-glass screen, but shows a much greater degree of unsharpness and fuzziness when incorrectly focused. It, therefore, makes for easier, faster and more accurate working.

Focal-plane shutter with extra-wide range of speeds

The success of a photograph depends very largely on the camera shutter. This is why the EXAKTA VX 1000 has a focal-plane shutter,

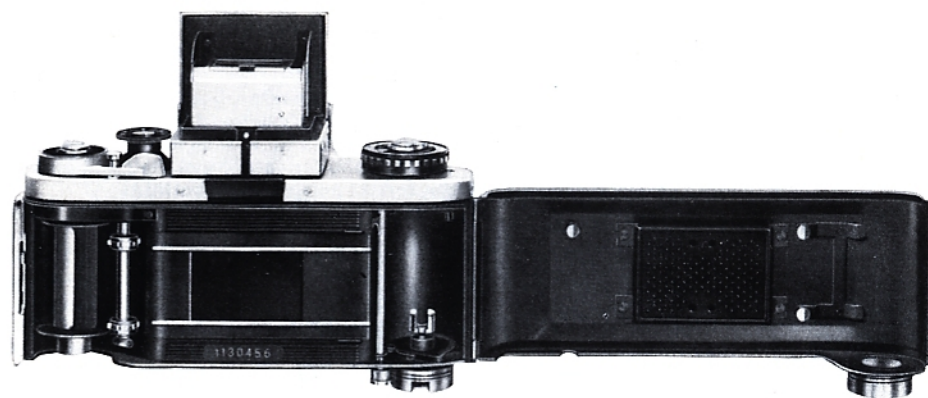
which is unequalled for reliability and the range of speeds to which it can be set. Here are a few of its particular advantages:

Two clearly-marked setting knobs for selecting speeds from $1/1000$ sec to 12 seconds (standard sequence of speed-settings). T and B settings for time exposures. Sound-damped speed-adjusting mechanism. Built-in delayed-action release operating on speeds from $1/1000$ sec to 6 seconds. Short travel winding lever. Easy-to-operate release button on camera body, with cable-release thread and release lock. Shutter mechanism exceptionally well protected against vibration and temperature fluctuations: Three-position flash-synchronization selector: F contact for fast-burning miniature flashbulbs (shutter-speed setting $1/30$ sec), FP contact for full synchronization with long-peak flashbulbs and faster shutter speeds, X contact for electronic flash units (shutter-speed setting $1/60$ sec) and normal flashbulbs (shutter speeds of $1/8$ sec or slower).

Ever-reliable film advance

In a miniature camera it is always important to keep the film lying absolutely flat and to ensure that it is advanced accurately and under full control. See how the EXAKTA VX 1000 provides complete assurance on all these points: negative size 24 mm x 36 mm, on perforated 35 mm film. Camera body and film track form a single light-alloy casting, giving complete rigidity and reliability in operation. It is impossible for the film-bearing surface to go out of adjustment. Accurately-machined film track and pressure plate to ensure maximum definition. Film either advanced from one cassette to another, or rewound after exposure by means of

the rewind crank: both operations can be controlled and their progress observed from outside the camera. Lockable rewind release mechanism, frame counter, cutting knife for cutting the film with the camera closed for removing part of the film before the full length is exposed. Two reminder dials to remind you what type of film and what speed of film is in the camera. No unexposed blank frames or accidental double exposures: interlocked film transport and shutter tensioning. Intentional double exposures can however be taken for trick photography. Hinged camera back with secure locking catch.



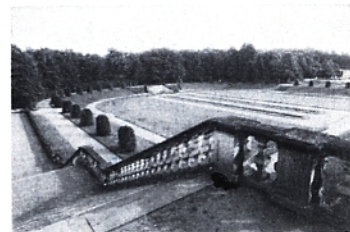
Lenses with a world-wide reputation

The EXAKTA VX 1000 uses only lenses made by internationally-famous manufactures, conforming to the very latest developments in optical and mechanical technology and capable of mastering the most exacting assignments. Here are just a few of their qualities: Ultra-sharp definition, correct colour rendering and high light intensity. Quick-change bayonet mount, allowing the standard lens to be removed with a single turn of the wrist and replaced by any of the numerous special-purpose lenses. Precision-machined helical focusing thread; depth-of-field scale (and also automatic depth-of-field indicator on Pancolar lenses from Jena). Anti-reflection surface coating on lens elements.

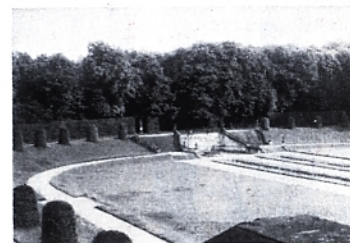
Lenses with focal lengths from 20 mm to 300 mm with fully automatic diaphragm control

The latest diaphragm-control mechanisms make it possible to focus the lens at full aperture in order to obtain the brightest possible screen image, and then to stop down to any previously-selected taking aperture without removing the camera from your eye. With lenses fitted with fully-automatic spring or pressure diaphragms, this operation is performed quite automatically the moment before the shutter is released. This saves a tremendous amount of time when taking pictures, besides making it impossible to forget the all-important operation of stopping down the lens. Lenses with fully-automatic diaphragms can also be switched over to normal aperture setting when desired (the Domiplan with the aid of an arresting knob available as an accessory).

20 mm



50 mm



1000 mm



These three photographs were all taken from the same camera position



Focal lengths from 20 mm to 1000 mm

(and with fully-automatic diaphragms from 20 mm to 300 mm).

There is a vast selection of first-quality special-purpose lenses available for use with the EXAKTA VX 1000. The range extends from superwide-angle lenses, through fast "night lenses", right up to super-telephoto lenses with a focal length of 1000 mm.

Wide-angle lenses have a short focal length and a wide angle of view, and so are capable of getting a large area "into the picture" although the individual details of the subject will appear very small. They will be needed for interior shots, architectural photography and copying work, etc. Long-focus lenses on the other hand have a longer focal length and a

small angle of view: these will cover only a narrow section of the subject but will record details on a much larger scale, making distant objects appear nearer, like a telescope. These lenses should be employed for landscapes, architectural details, wild-animal and sporting pictures, also for candid snapshots and obtaining correct perspective in portraits.

In order to make it easier to select the long-focus lens which is most suitable for a particular subject, it is possible to fit the EXAKTA VX 1000 focusing units with a special Ground-Glass Screen showing the frame lines for lenses of 135, 180 and 300 mm focal length. This will indicate, whilst viewing the subject with the standard lens, the size of the area covered by each of these long-focus lenses.

The EXAKTA VX 1000 is supplied fitted with either a Finder Hood or a Penta Prism, both either with Ground-Glass Screen or Fresnel-Lens Screen, and one of the following lenses:

Designation, max. aperture and focal length in mm	Type of diaphragm*)	Angle of view (nominal)	Front mount diam. for push-on or screw-in attachments
Domiplan f 2.8/50	APD	45°	42 mm Ø M 49×0.75
Zeiss Tessar f 2.8/50	ASD	45°	51 mm Ø M 49×0.75
Zeiss Pancolar f 2/50	ASD	45°	51 mm Ø M 49×0.75

Special lenses for EXAKTA VX 1000

Zeiss Flektogon f 4/20	ASD	93°	80 mm Ø M 77×0.75
Lydith f 3.5/30	PD	71°	51 mm Ø M 49×0.75
Zeiss Flektogon f 2.8/35**)	ASD	62°	51 mm Ø M 49×0.75
Orestor f 2.8/100	CS	25°	51 mm Ø M 49×0.75
Orestor f 2.8/135	PD	18°	57 mm Ø M 55×0.75
S f 4/135**)	ASD	18.5°	51 mm Ø M 49×0.75
S f 2.8/180 from Jena	ASD	14°	90 mm Ø M 86×1
Orestegor f 4/200	PD	12°	60 mm Ø M 58×0.75
Orestegor f 4/300	PD	8°	100 mm Ø M 95×1
S f 4/300 from Jena	ASD	8°	90 mm Ø M 86×1
Orestegor f 5.6/500	PD	5°	125 mm Ø M 118×1
Zeiss Catoptric (mirror) lens f 4/500	no diaphragm	5°	Built-in filter turret
Zeiss Catoptric (mirror) lens f 5.6/1000	no diaphragm	2.5°	Built-in filter turret

*) CS = Click stop; PD = Pre-set diaphragm; APD = Automatic pressure diaphragm; ASD = Automatic spring diaphragm. **) With extra-long helical focusing thread for close-up focusing without accessories; for Flektogon f 2.8/35 mm down to 7 in., and for S f 4/135 mm from Jena down to 3 1/2 ft.



Everything you need for close-up pictures

The EXAKTA VX 1000 opens up a fascinating new world of photography: taking close-ups of small objects at very close distances. In the first place, the interchangeable lenses make it easy to fit special accessories for increasing the lens extension, or distance between the lens and the film. To increase the lens extension it is only necessary to fit either a Bayonet Ring and Extension Tube or else Bellows Attachment, between the camera and the lens.



Bayonet Rings and Extension Tubes

These provide the following increases in the lens extension: Two-in-One-Ring, 5 mm; pair of Bayonet Rings (screwed together), 10 mm; between the two Bayonet Rings you can also screw combinations of the three Extension Tubes, available in lengths of 5, 15 and 30 mm. By combining these various devices it is possible to take pictures at virtually any distance from the subject, so obtaining any desired image scale (right up to an actual enlargement of the subject on the film).

Swing Angle Attachment

This is a part of the EXAKTA "Vielzweck" or Multi-Purpose Equipment. It is fitted with a focusing slide, making it very much easier to focus the image when working from a tripod. The camera can be swung from the horizontal to the vertical position.

Bellows Attachment

This unit is recommended for the most trouble-free taking of close-up pictures: it too is part of the "Vielzweck" Equipment. The bellows extension is continuously adjustable from 35 to 220 mm, making it possible to vary the image scale and related values speedily over an uninterrupted range. A special Zeiss Tessar f. 2.8/50 mm lens is available in a sunk mount for focusing right up to infinity.

Miniature Bellows Attachment

This easily-carried bellows unit is designed for taking hand-held close-ups. The bellows exten-

sion range is from 35 to 125 mm. This device can also be employed for taking pictures at infinity-distances, by using the above-mentioned special lens in sunk mount.

Autocouple Extension Release

Lenses with fully automatic diaphragms are particularly valuable for taking close-up pictures; when using them together with Bayonet Rings and Extension Tubes, or with the Miniature Bellows Attachment, this EXAKTA Autocouple Extension Release should be used for linking the shutter and diaphragm release mechanisms.

Transparency Copying Equipment

This is a special slide carrier for use with the Bellows Attachment, intended for making optical duplicates of colour or monochrome transparencies, and also internegatives from reversal slides.

Copying Stand and Repro Unit

These are particularly useful components of the EXAKTA "Vielzweck" Equipment, ideal for copying work and taking all types of close-up pictures with the greatest convenience. The Copying Stand is designed for supporting the camera directly (using Bayonet Rings and Tubes to provide the lens extension), whilst the Repro Unit incorporates the larger Bellows Attach-

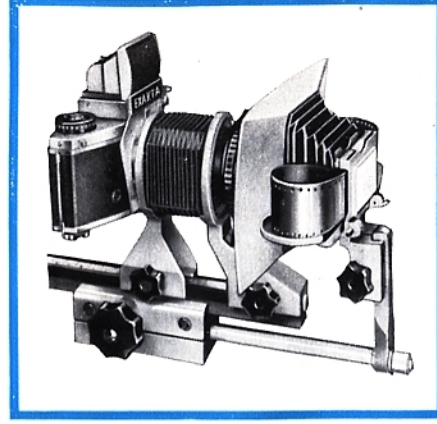




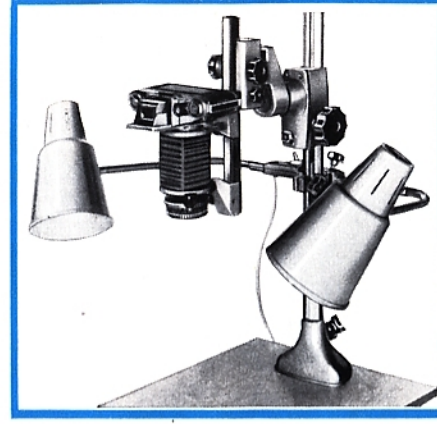
Bellows Attachment



Miniature Bellows Attachment



Transparency Copying Equipment on Bellows Attachment



Repro Unit with Lighting Equipment

ment. Both units have a metal column with its own focusing drive, standing on a wooden base board 14×20 inches in size (for originals up to A 4 size, $8\frac{1}{4} \times 11\frac{3}{4}$ inches); if required they can also be supplied complete with their own Lighting Equipment.

Close-up pictures with flash

The EXAKTA Ring-Flash Units RB 1 and RB 2 are the very latest universal light sources for taking close-up pictures. They always provide completely uniform, frontal illumination and will overcome even the trickiest lighting problems. These units can be employed with all the lens-extending devices for the EXAKTA VX1000. The EXAKTA Kolpofot consists of an RB 1 Ring-Flash Unit combined with a Bellows Attachment and an S f 4/135 mm lens from Jena (which can be stopped right down to f 45); this combination is designed primarily for use in medical photography and will provide needle-sharp pictures of the interior of body-cavities (vagina, mouth and pharynx) as well as of the skin, eyes, ears, etc.

Endoscopic photography

It is possible to take photographs inside the organs of the human body (the bladder, for example) by connecting a specialized inspection tube (called an endoscope) to the EXAKTA VX 1000 with the aid of the Endoscope Adapter. The EXAKTA Overrunning Switch Apparatus will provide the powerful light needed for taking pictures whilst prolonging the life of the lamp.

Photomicrography

The EXAKTA VX 1000 can be attached directly to a microscope with the aid of the Microscope Adapter. By using the Repro Unit, on the other hand, photomicrographs can be taken without any mechanical connection between the camera and microscope; the image scale is controlled by adjusting the bellows.

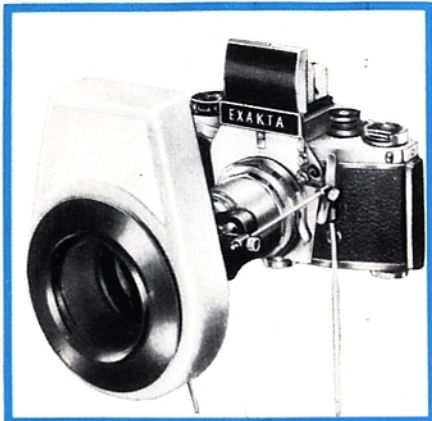
Accurate exposure determination

By using the EXAKTA Macro-Micro Photometer when taking photomicrographs, close-up pictures of stationary objects or when copying slides, it is possible to measure the light actually entering the camera and so determine the exposure exactly.

Useful focusing aids for close-up work and photomicrography

The Lens Magnifier is particularly recommended as the ideal focusing viewfinder for photomicrographic and close-up photography. This unit employs a highly-corrected camera lens as a magnifier, which provides an enlarged, uniformly sharp and virtually distortion-free reflex finder image. For occasions when there is no spare lens available or suitable for use in the Lens Magnifier, a fully-corrected Top Lens is obtainable. For focusing on the finest details of the subject when taking photomicrographs or extreme close-ups, various special focusing





RB 2 Ring-Flash Unit

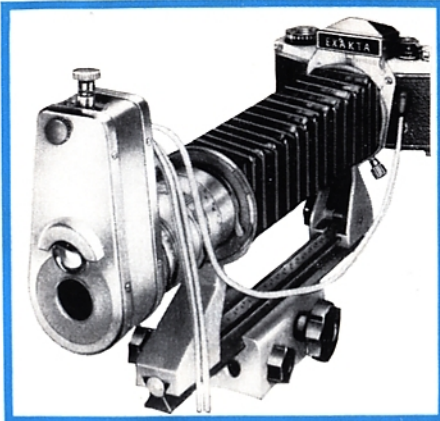
screens are available: either as a ground-glass with clear centre spot (3 or 10 mm diameter), or else completely clear; both are provided with a hairline cross. These screens can be fitted in all viewfinder units for the EXAKTA VX 1000 and may be obtained with scaling graticules and various other useful guide lines. When the curvature of the screen may cause undesirable distortion of the image (as in copying work), it is possible to fit a plane ground-glass screen (with guide lines if required). Finally, when taking extreme close-up photographs at a magnification-ratio of more than $\times 1.5$, it is advisable to employ the Lens Reversal Ring; this is used to fit the lens back-to-front, with the rear element facing the subject, in order to obtain the highest possible definition.

Astro-Photography and Spectro-Photography

Just as the EXAKTA VX 1000 can, with the aid of adapters, be attached to the microscope and the endoscope, it can also be employed in connection with other viewing instruments. The adapter for use in astro-photography connects the camera to the telescope. A quick-change mount makes it possible to detach the EXAKTA from the telescope by one simple movement. Connecting pieces are available also for working with two well-known types of spectroscopes: For the Hand Spectroscope from Jena there is the Spectroscope Connecting Ring and for the ROW Metal Spectroscope the Spectroscope Connecting Shell.

Other useful accessories

These include: Leather Ever-Ready Case, Lens Hoods for protecting the lens against side- and back-light as well as against rain and snow, and

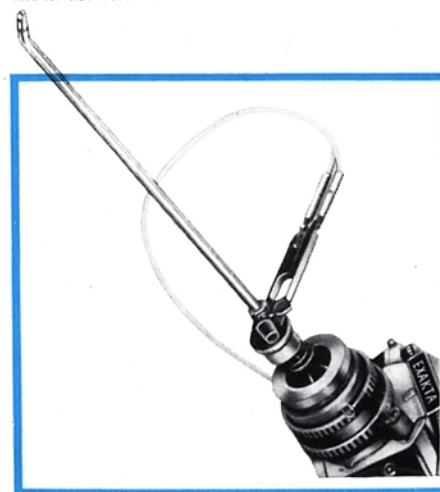


Kolpofot with RB 1 Ring-Flash Unit

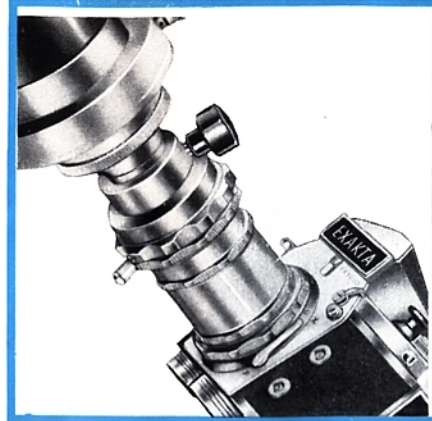
a Giant Release Button for increasing the area of the release knob (making it easier to operate the camera with gloved fingers or when numb with cold).

We would like to thank you for showing so much interest in the EXAKTA VX 1000. To obtain the best possible performance from this camera, we recommend reading "EXAKTA Manual" by Werner Wurst, Dresden, or "35 mm Photography with an EXAKTA" by K.L.Allinson A. R. P. S. (Fountain Press, London), which are obtainable from photographic dealers. We are of course always ready to answer your queries ourselves; please write to us whenever you require any special information or literature.

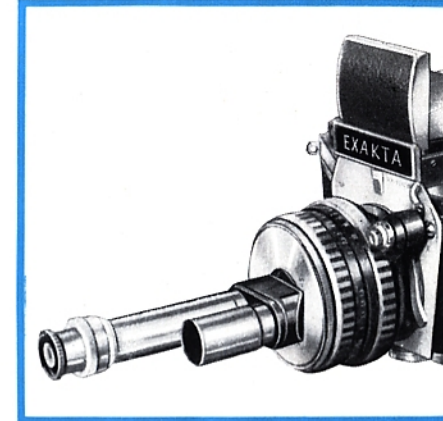
The Illustrations given in this publication may differ in certain details from the latest models of the camera and its accessories.



Endoscope Adapter



Telescope Adapter for astro-photography



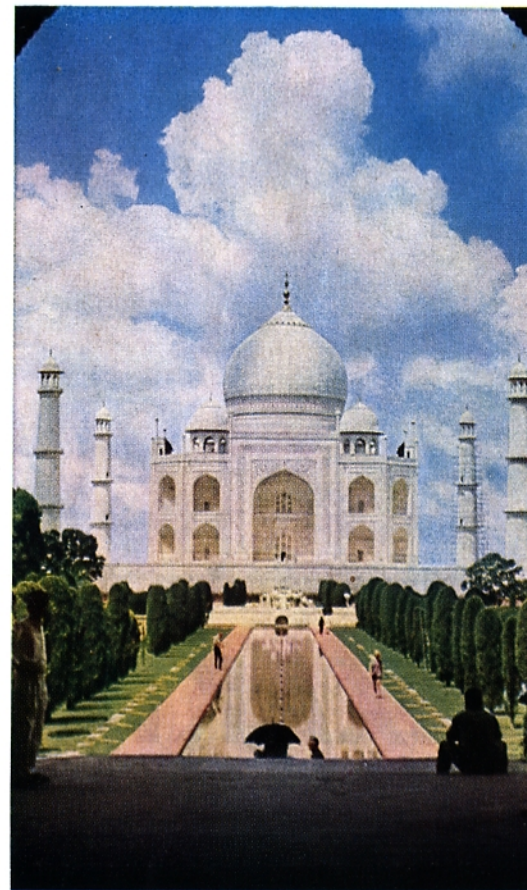
Spectroscope Connecting Ring



Repro Unit used for taking photomicrographs



Microscope Attachment and Macro-Micro Photometer





EXAKTA

VX 1000

DEUTSCHE DEMOKRATISCHE REPUBLIK