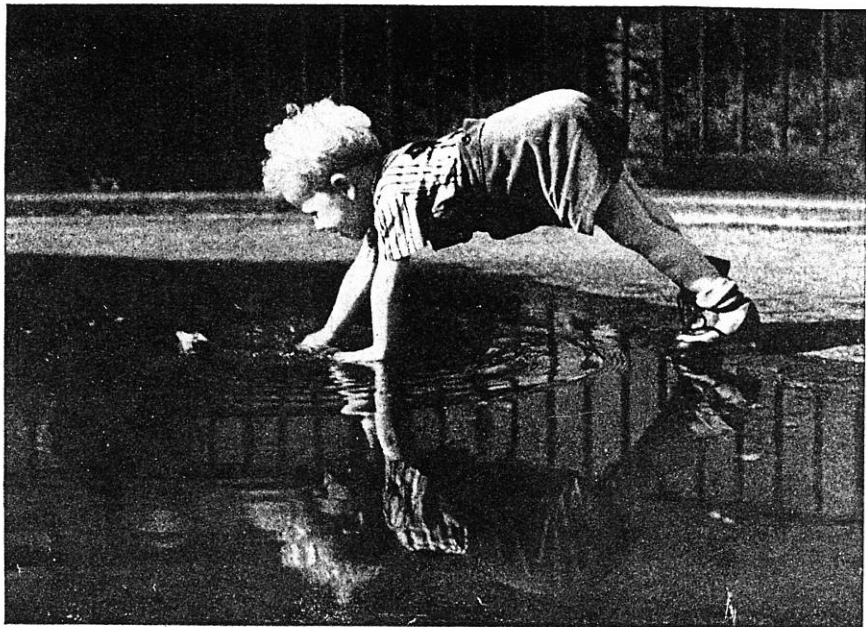




EXAKTA *varex*



Cover Picture and top: Werner Wurst, Dresden

The EXAKTA Varex is the result of fifteen years of consistent development of the Kine-Exakta, the first single-lens reflex camera 1 1/2 x 1 in. Its focusing system opened up a new era in miniature photography and met with universal approval in all parts of the world.

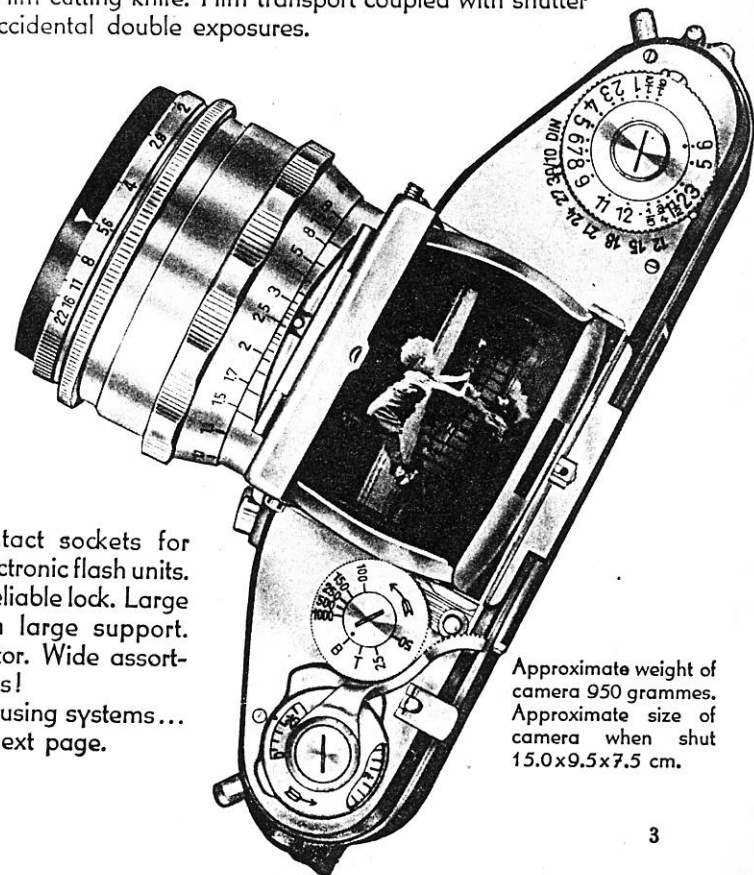
To focus the image on the ground-glass screen of the EXAKTA Varex means that beginners as well as experts will master even the most difficult tasks with ease and security. The brilliant, upright, coloured, and considerably enlarged finder-image holds plenty of stimulations for composition. It permits critical focusing and control of the varying extent of depth of field effected by stopping down.

The finder-image is projected by the taking lens itself. The image on the screen is strictly the same as the future photograph. There is no divergence in frame (parallax), no matter how long or short the focal length of the lens, how much the camera extension is increased for close-up work, whether micro-pictures or astro-photos are taken. There is no need for additional finders, range-finders, or tables. Consequently working with the EXAKTA Varex is cheap, while ensuring precision results at the same time.

EXAKTA Varex, model VX

– the Miniature Camera that comes up to your expectations

- 1) Film track forms part of die-cast aluminium camera-body: sturdy and reliable. Camera takes miniature cine-film of 35 mm. width, and is, consequently, small and handy.
- 2) Interchangeable brand-name lenses in bayonet helical focusing mount. Wide variety of tele lenses and wide-angle lenses (focal lengths ranging from 4 cm. to 50 cm.). The standard lenses (with f/5 cm and f/5,8 cm focal length) featuring a pre-set diaphragm device.
- 3) Ground-glass image which is enlarged by two powerful magnifiers providing up to 6 x magnification, allows of critical focusing with ease and security.
- 4) Superb for colour work: Coloured ground-glass image with clearly defined outline like a lantern slide.
- 5) Interchangeable finder-hood which opens automatically upon pressure on catch, can be adjusted for open direct vision (frame finder) or be replaced by a Special Prism (See page 4).
- 6) Focal-plane shutter for automatic speeds from 1/1000 to 12 sec. and short (B) and long-time (T) exposures. Delayed action release for speeds from 1/1000 to 6 sec. Shutter locking device actuated by swinglever above release knob.
- 7) Solid film track: film transport from cartridge into cassette or rewinding of film into cartridge both of which can be controlled from outside. Exposure counter for 36 exposures. Film cutting knife. Film transport coupled with shutter wind preventing accidental double exposures.



- 8) Synchronized contact sockets for flash-bulbs and electronic flash units.
- 9) Hinged back with reliable lock. Large tripod socket with large support. Film speed indicator. Wide assortment of accessories!
- 10) Two alternative focusing systems... described on the next page.

Approximate weight of camera 950 grammes. Approximate size of camera when shut 15.0 x 9.5 x 7.5 cm.



A new concept: The Two-System Camera.
 Realized for the first time in the EXAKTA Varex and firmly based on the single-lens reflex principle. **Reflex Finder-Hood and Special Prism** - two

alternative operative systems - allow of viewing and focusing the image. Being interchangeable the one system is used that promises the best results. In every case, however, the taking lens projects a finder image identical with the future photograph.

Used with the finder-hood the EXAKTA Varex masters the majority of photographic tasks! Both eyes can easily control the greatly magnified, upright, but side-reversed ground-glass image. Camera may be held at chestlevel (looking down on to ground-glass screen), over the head (turning camera upside-down and looking up into finder-hood), and, for vertical pictures, at eye-level, when working at right angles to the subject. Fields of application: portraiture, children, animals, plants, macro-photography, tripod pictures, technical work in the studio (reproductions, still-lives, micro-photography, etc.).

Equipped with the Special Prism the EXAKTA Varex becomes a "speed camera" for "speed shots"! Laterally correct reflex image, also for vertical pictures. Direct eye-level vision of the subject. Direction of eye and camera always identical. The image in the finder moves in the same direction as the subject. This is particularly important when following rapidly moving subjects in the finder. Fields of application of Special Prism: speed shots of every description (snapshots, press work pictures, sports and stage pictures, technical speed studies, etc.).



Picture: Lothar Kaster, Dresden

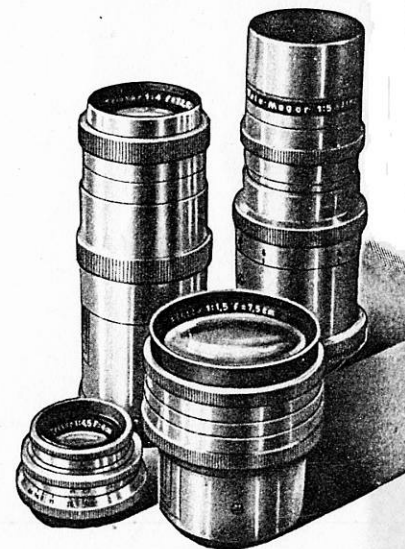
Special lenses will help where the standard lens is not sufficient! **The ultra speed** of the 7.5 cm. f/1.5 lens ensures sufficient exposure even under adverse lighting conditions for theatre and stage work. This lens which is more than five times as fast as an f/3.5 lens, allows of taking successful shots even in illuminated thoroughfares of a town by night.

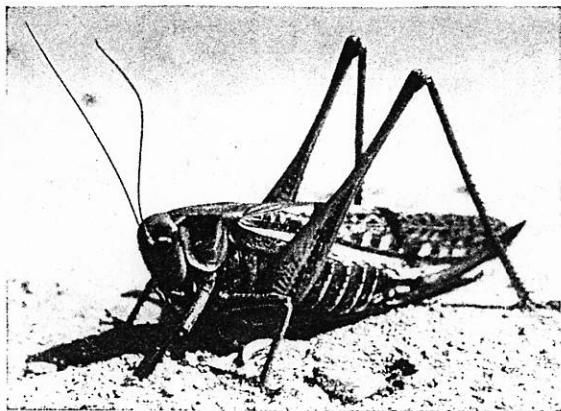
Long-focus Lenses (Tele Lenses) reproduce an enlarged image of the subject after the fashion of telescopes. Though showing a smaller angle

of view than the standard lens, they reproduce the reduced field bigger on the film. Tele Lenses are thus useful for landscapes, architecture, animal pictures (see Illustration above), snapshots, and, on account of advantageous perspective, for portraits.

Wide-Angle Lenses showing a wider angle of view than the standard lens, reproduce the increased field smaller on the film. They are useful where the camera-subject distance is restricted, for interiors, architecture, reproduction work, etc.

All EXAKTA Varex special lenses are inserted into the bayonet mount of the camera-body. The lenses themselves are fitted with a helical focusing mount for critical focusing which is always obtained by the finder image, no matter whether the finder-hood or the Special Prism is being used. There is no need whatever for additional finders.

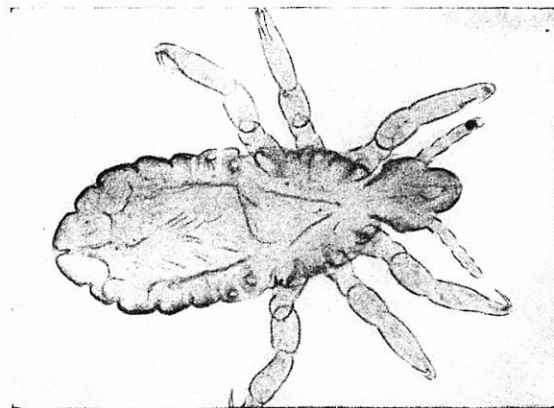
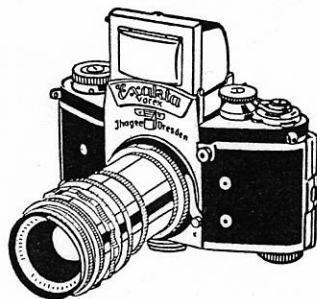




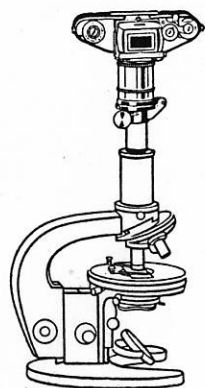
Picture: Eberhard Buschmann, Dresden

Increase of camera extension for close-up pictures (macro-pictures) is effected by two Bayonet Adapter Rings and any number of Extension Tubes which are inserted between the EXAKTA Varex and its lens. They permit to reduce the lens-to-subject distance so much that photographs can be taken up to natural size and, if required, even slightly larger than life-size (e. g. insects, flowers, postage-stamps, coins). There is no need for uncertain experimental determination of sharpness: for even in the case of the shortest lens-to-subject distances the image is focused on the reflex screen. The EXAKTA Varex is 100% free from parallax, and it does not know any divergence of frame which can become so annoying when taking close-ups. **Micro Pictures** require the use of the "Microscope-Attachment" which connects the EXAKTA Varex with any microscope. The camera lens must be removed, as the eye-piece and the objective of the microscope are used instead. And again, the determination of the field covered, sharpness, depth of field, and - when taking living subjects - the favourable moment for exposure are observed in the reflex finder.

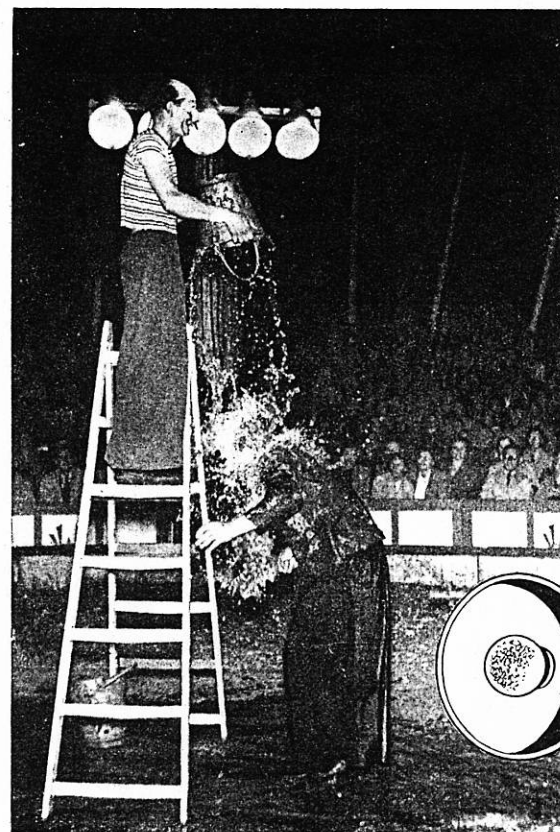
2 Bayonet Adapter Rings and 3 Extension Tubes (0.5 cm., 1.5 cm., and 3.0 cm.) are delivered in complete sets only. (Cat. Nos 139/141-144)



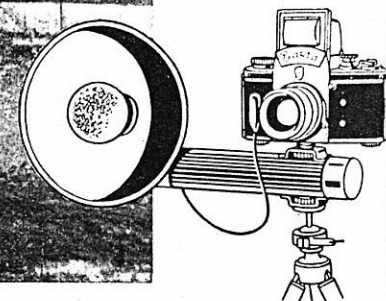
6 Picture: Paul Appelfeller, Benshausen



Microscope Attachment, complete with Extension Tubes and Bayonet Adapter Ring, in case, available with
 1) hinge Cat. No 147
 2) bayonet fitting and clamping screw Cat. No 153



Picture: Hannes Speckens Düsseldorf



Flashlight enables the up-to-date press photographer, the professional, and the amateur, to overcome all difficulties arising from unfavourable lighting conditions. Short exposure times and medium apertures in dark rooms are only possible if flashlight is used. Therefore the EXAKTA Varex has been fitted with synchronized contact sockets for the two most up-to-date flashlight systems:

- 1) **The flash-bulb synchronization** releases shutter and flash-bulb simultaneously. A newly designed EXAKTA Flashgun is available (Cat. No 148), consisting of batteryholder, reflector, and flash-lamp with spring locking device suited for all sizes and all bases of flash-bulbs.
- 2) **The electronic flash synchronization** allows of using the EXAKTA Varex with the well-known electronic flash units. Effective exposure time according to the kind of flash: $1/500$ – $1/5000$ sec.! Consequently electronic flash is used for high-speed shots (sports, artistic, machinery, etc.). Shutter speed $1/50$ sec.! Impossible to imagine a more versatile camera for the press photographer than the EXAKTA Varex fitted with a reliable electronic flash unit!

Optical Equipment of the EXAKTA Varex 1 1/2 x 1 in.

The EXAKTA Varex is delivered complete with Finder-Hood and one of the following lenses. The Penta Prism must be ordered separately as an accessory!

| Lens | | Focal Length | Angle of Field | Lens front mount | Catalogue No |
|-------------------------------|----|--------------|----------------|------------------|--------------|
| f/3.5 Standard-Lens | PD | 5.0 cm. | 45° | 42 mm. | 402 |
| f/2.8 Standard-Lens | PD | 5.0 cm. | 45° | 42 mm. | 401 |
| f/2 Standard-Lens | PD | 5.8 cm. | 40° | 51 mm. | 404 |
| f/1.9 Standard-Lens | PD | 5.8 cm. | 40° | 51 mm. | 403 |

Table of EXAKTA Varex Supplementary Lenses

| Lens | | Focal Length | Angle of Field | Lens front mount | Catalogue No |
|--------------------------------------|----|--------------|----------------|------------------|--------------|
| Wide-Angle f/4.5 Helioplan | PD | 4.0 cm. | 56° | 42 mm. | 408 |
| f/1.5 Night-Lens | PD | 7.5 cm. | 39° | 60 mm. | 422 |
| f/1.9 Primoplan | PD | 7.5 cm. | 39° | 57 mm. | 409 |
| f/2.8 Tricoplan | PD | 10.0 cm. | 24° | 51 mm. | 410 |
| f/4 Long-Focus-Lens | PD | 13.5 cm. | 18° | 51 mm. | 423 |
| f/5.5 Tele-Megor | PD | 15.0 cm. | 16° | 42 mm. | 411 |
| f/5.5 Tele-Megor | PD | 18.0 cm. | 14° | 51 mm. | 412 |
| f/5.5 Tele-Megor | PD | 25.0 cm. | 10° | 60 mm. | 414 |
| f/5.5 Tele-Megor | PD | 40.0 cm. | 6° | 85 mm. | 415 |
| f/8 Long-Distance Lens | | 50.0 cm. | 5° | 80 mm. | 120 |

All lenses are factory-coated!

PD = pre-set diaphragm lens

- Penta Prism** (in Leather Case) Catalogue No 302
- Distance Meter** for Penta Prism Catalogue No 310
- Eye-Piece** with rubber ring for Penta Prism Catalogue No 303
- Eye-Piece** (with rubber ring in swivel mount and holding device for corrective lenses) for Penta Prism Catalogue No 311

Special EXAKTA Varex Accessories

- Everready Leather Case** protects the camera without impairing its operative speed Catalogue No 307
- Giant Release Button** increasing release knob surface facilitates releasing the shutter when wearing gloves Catalogue No 151
- Lens Hoods** protect lens against frontal and side stray light,
 - for 42 mm. lens front mount Catalogue No 206
 - for 51 mm. lens front mount Catalogue No 208
- Colour Filters** yellow light, medium, dark; orange light; green light, dark; red; blue; ultra-violet for 42 mm. lens front mount Catalogue No 205
- for 51 mm. lens front mount Catalogue No 207
- When ordering specify colour and density!
- Soft Focus Discs** for artistic soft-focus pictures
 - for 42 mm. lens front mount Catalogue No 210
 - for 51 mm. lens front mount Catalogue No 211
- Polarizing Filters** suppress annoying reflection from highly polished surfaces
 - for 42 mm. lens front mount Catalogue No 214
 - for 51 mm. lens front mount Catalogue No 215

For prices and conditions apply to our Export Department. All questions concerning EXAKTA cameras will be answered by return mail free of charge. On application the following pamphlets will be sent free of charge. 1) Macro-photography-Photomicrography. 2) EXAKTA Flashgun. 3) Further Possibilities. 4) The Lens Magnifier. 5) The Distance Meter.

E



DRESDEN A 16