



Exakta

"for every purpose"

EXAKTA

for all time!

The advantages of reflex cameras are well known and therefore it is unnecessary to refer to them again. The Exakta however is the first reflex camera specially designed for small pictures and with one lens which guarantees an exact agreement between the picture seen on the ground-glass and the real photograph.

Principal Advantages

Notwithstanding the small size of the body of this camera, pictures, made on V. P. films, standard size, are very effective and large enough to give complete satisfaction. The picture shown on the ground glass is identical with the photograph to be taken. Pictures must always be sharp as focussing and depth of focus can be easily controlled on the ground glass. It is impossible to take two pictures on one film as the changing of the film from number to number automatically sets the shutter, therefore always ready for use. Lenses with large apertures up to $f/1,9$ and Extra lenses, telephoto and wide-angle can be supplied. The shape of this camera is both beautiful and practical and fits conveniently in one's hands. Standard V. P. film can be used which can be obtained every where in special fine grain quality. Only 8 pictures on one spool and one need not wait long before the film can be developed. Focal plane shutter to $\frac{1}{1000}$ th second. Nevertheless Exakta is hardly larger than an ordinary roll film camera.



Portraits



Reproductions



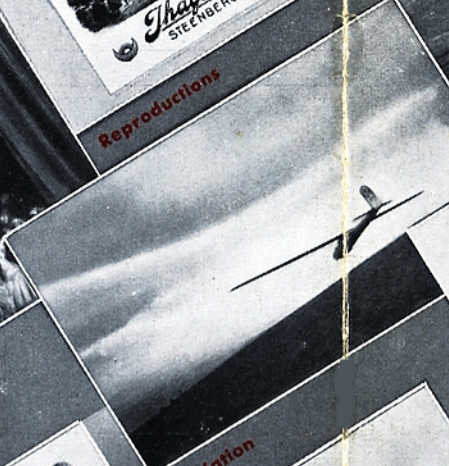
Sport photos



Chirurgical photography (Picture taken at Focke Memorial Hospital, Jackson, Mich.)



Stage photography



Aviation



Criminal photography (Picture taken with two combined tubes B for close ups)



Architecture



Microscopical (scientific) pictures



Press-work



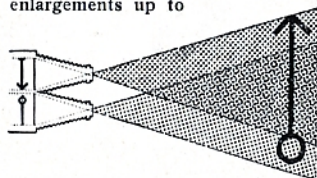
For all purposes

EXAKTA REFLEX CAMERA

Size of Pictures.

"Exakta" pictures, $2\frac{1}{2} \times 1\frac{3}{8}$ in. ($4 \times 6,5$ cm.) are quite effective even as prints. However, it will be easy to produce enlargements up to 12×10 in., and even larger ones.

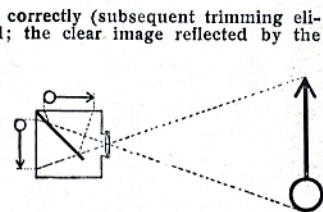
Compared with square sizes, the rectangular "Exakta" shape affords the great advantage of complying with aesthetic requirements. Possibly 90 per cent. of all exposures require the vertical or horizontal sizes which prevail in the paintings by famous masters.



This is parallax

Image in View Finder.

Whether the picture is focussed sharply or stopped down to obtain greater depth of definition, or whether the view has been chosen correctly (subsequent trimming eliminated) and non-essentials have been omitted; the clear image reflected by the mirror being the exact size of the finished picture shows everything prior to exposure. Working with a mirror reflex camera is the acme of perfection! No estimating of distances, no time-consuming control of distance meters and tables! No trifling little image in a view finder!



"Exakta" is free from parallax

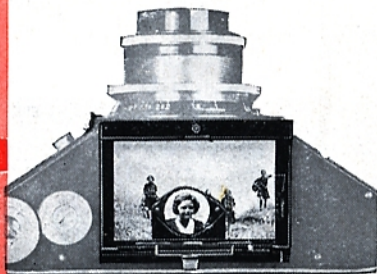
Another important point.

Only a mirror reflected image as produced by the "Exakta" lens is always reliable and absolutely coincides with the final picture.

Has it not happened to you, in spite of accurate observation through the finder, that, especially in close-up pictures, the body of a person was taken minus the head? No matter whether the view finder was built into the camera or attached to it. Such failures are due to a separate finder and taking lens, and is called the parallax. The two diagrams will convince you of the superiority of the "Exakta" camera in this respect.

Double exposures impossible.

Did you ever make two exposures on the same film because, in the excitement of the moment, you forgot to change the film? This cannot happen with an "Exakta", in which the act of changing the film, winds up the shutter and brings the reflex mirror into operation position. The complete change of film must of course be checked by the number in the Red window.



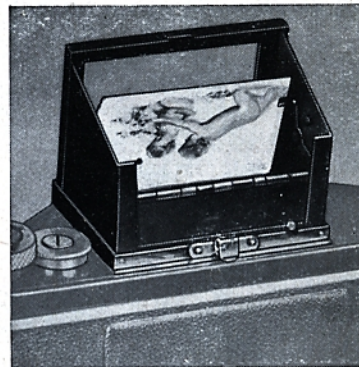
Light Hood with Magnifier

Focussing.

The large reflected image reduces the work of adjusting the diaphragm and the focussing to almost automatic operations. By means of a precision helical mount, focussing to correct sharpness takes place with microscopic accuracy. A magnifier in the hood may further be relied on in case of ultra critical focussing.

Shutter.

A high-grade camera requires a first-class shutter. The self-capping focal plane shutter, on which the speeds can be easily read, makes instantaneous exposures from $\frac{1}{25}$ to $\frac{1}{1000}$ sec. as well as time exposures of $\frac{1}{10}$, $\frac{1}{2}$, 1 to 12 sec. without delayed action release, and exposures from $\frac{1}{1000}$ to 6 sec. when the delayed action release is used. The Exakta focal plane shutter is reliable and precise and is more efficient than the usual shutters. Whether you wish to take a picture of every-day life, of a moving car or aeroplane or of a sporting or similar high-speed event, your "Exakta" will not fail you!

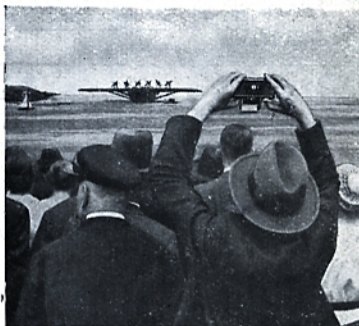


Reflex device for eye level

Range of usefulness.

An "Exakta" is remarkably efficient in every way, a real universal camera. There is not a sphere in which its numerous advantages cannot be utilised, including landscape or portrait work, scientific, sport, night or stage photography. The small number of exposures on a spool allows for quick developing without loss of time and money. For night, interior and stage work an "Exakta" with the largest aperture lens obtainable should be used.

Scientists and research workers can use tele-photographic or wide angle or employ supplementary lenses. Even in such cases, the mirror-reflected image will be absolutely reliable and the exact picture seen on the top screen. The lens can be changed whilst the camera is loaded. A press photographer equipped with an "Exakta" can surmount all obstacles. In a crowd, he can photograph over people's heads and watch the subject from below. Detectives will find that "Exakta" facilitates their work immensely as vertical pictures are taken at an angle of 90° to the subject, and the photograph can thus be attained unobserved, which would be impossible by direct work.



Exakta for press work

Shape and weight.

The beautiful form of the "Exakta" attracts at once. Its handy body lies conveniently in your hand during the taking of a picture. The elegant trapezoid form is not only beautiful but insures the utmost utilisation of space. Provided with reflex mirror, focal plane shutter, and the most rapid lens, the "Exakta" nevertheless appears to be hardly larger than an ordinary roll film camera. It is most beautifully made, entirely of metal, leather covered, and fitted with Tripod Bush and Cable Release.

Size overall, $6 \times 3 \times 2\frac{3}{4}$ ins. Weight 26 oz.



"Exakta" for detective work

EXAKTA and World Opinion

St. John Island (Virgin Islands)
September 17th, 1934.

"I was so impressed by your camera that I ceased to use the others and confined myself exclusively to the 'Exakta'. Since then I have used it in the tropics, in aerial photography, and at sea on small oceangoing yachts. I have sold quantities of photographs to the *New York Times*, which sets a rather high photographic standard. I feel certain that in the 'Exakta' Camera you have an instrument far superior to any other miniature camera on the market."

D. H.

Glasgow, August 25th, 1934.

"The writer has got some really 'Tip-top' results with this camera, the 'Exakta,' enlarged to 18x15. They are treated in a pictorial manner rather, than from the point of sharpness, and he is definitely of the opinion that it is going to take the place of his 1/4-plate Reflex which he has used for twenty years. In other words, the large type is doomed."

J. B.

Saigon, July 7th 1934.

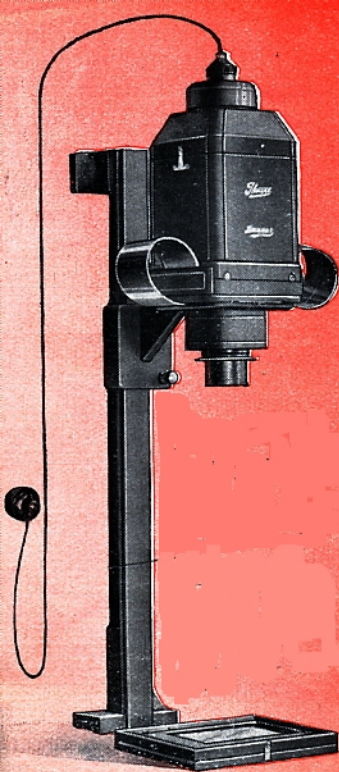
"We wish to express our entire satisfaction in your new 'Exakta' Reflex camera. To be brief, the 'Exakta' Reflex is the most perfect reflex ever introduced into the photographic world; no expert can find any point dissatisfactory with it, we can say with confidence. Its versatility surpasses any types of reflecting and miniature hand cameras now existing on the market. We congratulate you wholeheartedly for having so successfully provided this little wonder to the amateurs as well as professional photographers at such low prices that almost approach impossibility."

H. P. S.

New York, May 26th, 1934.

"Congratulations on wonderful delayed action shutter and improvements in the 'Exakta'."

H.



Pictures like the above will give perfect satisfaction to many amateurs. Real artistic photographs however can be obtained by means of enlarging, which is made easy with the

Exakta - Lumimax

enlarging apparatus, as shown in margin. The Exakta Lumimax is used in conjunction with the lens of the Exakta, which is very easy to do as all Exaktas have interchangeable lenses. Focusing is done by means of the focussing mount with which, the Lumimax is provided. Films need not be cut into single pictures as the Lumimax is provided with a very practical film canal. Films will not be affected by heat as here is a hinged top for ventilation.

Prices see last page

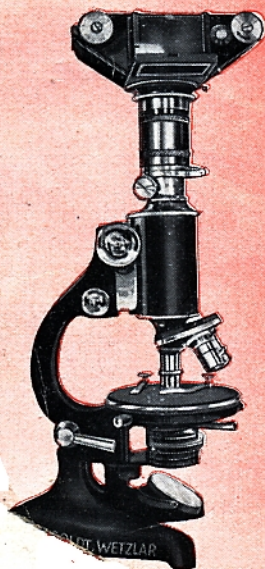
For Microscopical Photographs

the Exakta is an ideal instrument. Here too, the focussing by means of a mirror proves to be the most perfect construction for photographic cameras. The Exakta is adapted to the microscope by means of the

Exakta Micro-Adapter.

This adapter can be turned over, thus permitting the interchange of the oculars of the microscope and to change the scale of enlargement.

Price see last page



Enlarged with Exakta-Lumimax



Ihagee Exakta camera and Lumimax can be obtained from every bonafide photographic dealer. If not, please apply to Ihagee Kamerawerk, Dresden-A. 19



Exakta Model A

Focal plane shutter, self capping, instantaneous speeds from $\frac{1}{250}$ th to $\frac{1}{1000}$ th second can be read at once, time exposures for any length. Interchangeable lenses.

Exakta Model B

This represents the most perfect equipment of the Exakta. Instantaneous exposures of highest speeds from $\frac{1}{250}$ th to $\frac{1}{1000}$ th second. Short and long time exposures from $\frac{1}{10}$ th, $\frac{1}{2}$ to 12 seconds. Delayed-action release for exposures from $\frac{1}{1000}$ th to 6 seconds. Interchangeable lenses.

Exakta for Night-work

This model is equipped with lenses of very large aperture, thus making it useful for interior photography and pictures taken in theatres, at law-suits etc. With panchromatic films this Exakta is a camera for night photography par excellence.

Exakta-Junior

This is a cheap model with focal plane shutter speeded to $\frac{1}{1000}$ th second and focussing by means of the front lens. Time exposures of any length. Special lenses cannot be used. It is possible however to use additional lenses for both near and long distance photography.

Prices of the EXAKTA

Optical Specification	Focal Length	Mod. A RM	Mod. B RM
Ihagee Exaktar F/3.5	cm 7.5	132.—	165.—
Cassar F/3.5	cm 7	150.—	183.—
Cassar F/2.9	cm 7.5	172.—	205.—
Xenar F/3.5	cm 7.5	154.—	187.—
Xenar F/2.8	cm 7.5	194.—	227.—
Primotar F/2.7	cm 7.5	154.—	187.—
Makro-Plasmat F/3.5	cm 7.5	255.—	288.—
Tessar F/3.5	cm 7	176.—	209.—
Tessar F/2.8	cm 7.5	209.—	242.—

Night-Exakta

Xenon F/2	cm 8	310.—	343.—
Biotar F/2	cm 8	383.—	416.—
Primoplan F/1.9	cm 8	310.—	343.—

Exakta-Junior

			RM
With Ihagee Anastigmat F/4.5	cm 7.5		100.—
With Ihagee Anastigmat F/3.5	cm 7.5		100.—
Additional Tele-lens			3.30
Additional lens for close-ups			3.30

Prices of Accessories

Interchangeable lenses: **

Tele-Tessar F/6.3 focal length 12 cm	RM 145.—*
Tele-Tessar F/6.3 focal length 18 cm	RM 211.—*
Tele-Tessar F/6.3 focal length 25 cm	RM 261.—*
Tele-Megor F/5.5 focal length 15 cm	RM 105.—*
* Prices include Ihagee Anastigmat F/4.5 focal length 10.5—11 cm	RM 45.—*
Wide-angle Tessar F/8 focal length 5.5 cm	RM 122.—*
fitting Leather case for Tele-Megor	RM 3.—
Ever-ready case (if for Night-Exakta, please mention)	RM 13.50
Yellow screen to fit lenses with 32 mm diameter, light, medium, dark	RM 4.50
Yellow screen to fit lenses with 38 mm** diameter, light, medium, dark	RM 5.50
Yellow screen to fit lenses with 51 mm** diameter, light, medium, dark	RM 10.50
(for Night-Exakta)	
Additional leather light-hood in case	RM 3.—
Additional leather light-hood, 12 cms high, with large magnifier	RM 10.—
Lenhood for lenses up to F/2.8	RM 4.—
Lenhood for lenses of Night-Exakta **	RM 5.50

Additional lenses for close-ups

To fit all lenses, except Tessar F/2.8, Biotar and Primoplan	RM 3.30
To fit Tessar F/2.8**	RM 4.40
To fit Night-Exakta **	RM 6.60

Additional lenses for telephoto purposes

(Including price of tube for lengthening extension of camera, if necessary)

To fit all lenses with 7 cm focal length	RM 3.30
To fit all lenses with 7.5 cm focal length, except Tessar F/2.8	RM 8.30
To fit Tessar F/2.8	RM 9.40
For Night Exakta	RM 7.80
Extension tube A (1 1/2 cm) for close-ups (may be used with or without additional lens)	RM 5.—
Extension tube B (3 cms) (may be used with or without additional lens)	RM 5.—
Ball Socket Head for vertical pictures when a tripod is used	RM 3.85
Additional button-release, which facilitates releasing if gloves are worn	RM —.65
Vacublitz-holder for synchronous release of shutter and Vacu-or Photoflux flashlight-bulbs, including reflector	RM 11.—
Frame for reproductions	RM 55.—
Exakta-Luminax A without condenser lens	RM 29.—
Exakta-Luminax B with condenser-lens (gives more contrasty pictures)	RM 36.75
Frame for Exakta-Luminax	RM 7.50
Exakta Micro-Adapter with case	RM 50.—

** not to be used for Exakta-Junior

A complete collection of testimonials on Ihagee Exakta camera will be sent free on application.

Printed in Germany.