



*The Miniature Reflex Camera
for Beginners and Experts*

EXAKTA

V.

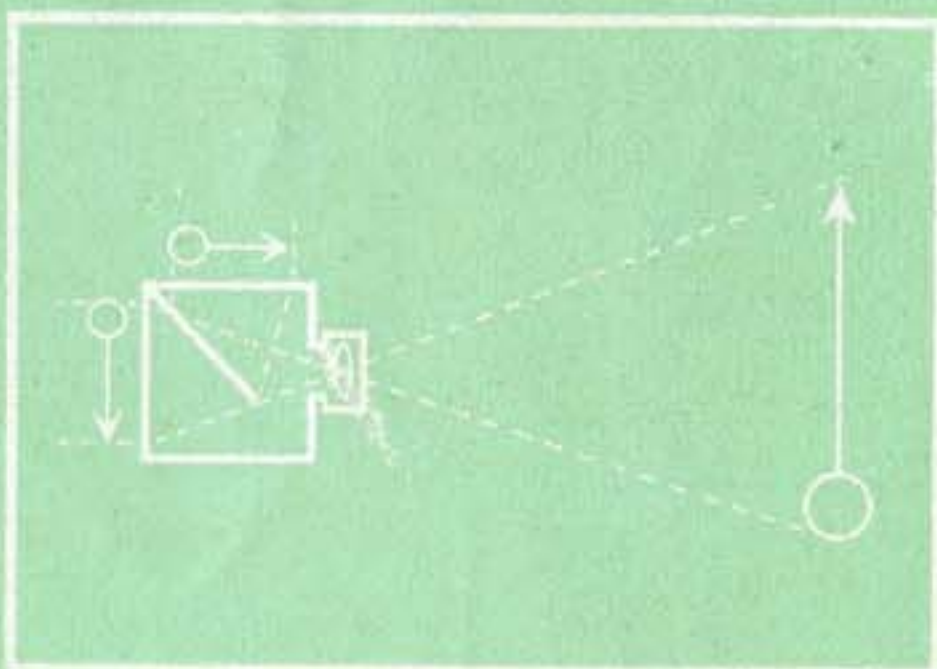
$1\frac{1}{2} \times 1$ in. = 24×36 mm.



The EXAKTA V is the result of fifteen years of consistent development of the Kine-Exakta, the first single-lens reflex camera $1\frac{1}{2} \times 1$ in. Its focusing system opened up a new era in miniature photography and met with universal approval in all parts of the world.

To focus the image on the ground-glass screen of the EXAKTA V means that beginners as well as experts will master even the most difficult tasks with ease and security. The brilliant, upright, coloured, and considerably enlarged finder-image holds plenty of stimulations for composition. It permits critical focusing and control of the varying extent of depth of field effected by stopping down.

The finder-image is projected by the taking lens on to the focusing screen.



The image on the screen is strictly the same as the future photograph. There is no divergence in frame (parallax), no matter how long or short the focal length of the lens, how much the camera extension is increased for close-up work, whether micro-pictures or astro-photos are taken. There is no need for additional finders, range-finders, or tables. Consequently working with the EXAKTA V is cheap, while ensuring precision results at the same time.

EXAKTA V

– the Miniature Camera that comes up to your expectations

- 1) Film track forms part of die-cast aluminum camera-body: sturdy and reliable. Camera takes miniature cine-film of 35 mm. width, and is, consequently, small and handy,
- 2) Interchangeable brand-name lenses in bayonet helical focusing mount allowing near focusing down to 0.90 m. Wide variety of tele lenses and wide-angle lenses (focal lengths ranging from 4 cm. to 50 cm.).
- 3) Ground-glass image which is enlarged by two powerful magnifiers providing up to 6x magnification, allows of critical focusing with ease and security.
- 4) Superb for colour work: Coloured ground-glass image with clearly defined outline like a lantern slide.
- 5) Interchangeable finder-hood which opens automatically upon pressure on catch, can be adjusted for open direct vision (frame finder) or be replaced by a Special Prism (See No. 10). Shutter is locked when finder-hood is closed.
- 6) Focal-plane shutter for automatic speeds from $1/1000$ to 12 sec. and short (B) and long-time (T) exposures. Delayed action release for speeds from $1/1000$ to 6 sec.
- 7) Solid film track: film transport **from cartridge into cassette or rewinding of film into cartridge** both of which can be controlled from outside. Exposure counter for 36 exposures. Film cutting knife. Film transport coupled with shutter wind preventing accidental double exposures.
- 8) Synchronized contact sockets for flash-bulbs and electronic flash units.
- 9) Hinged back with reliable lock. Large tripod socket with large support. Film speed indicator. Approximate weight of camera 950 grammes. Approximate size of camera when shut 15.0x9.5x7.5cm. Wide assortment of accessories!
- 10) **Two alternative focusing systems . . .**
will be described on the next page.

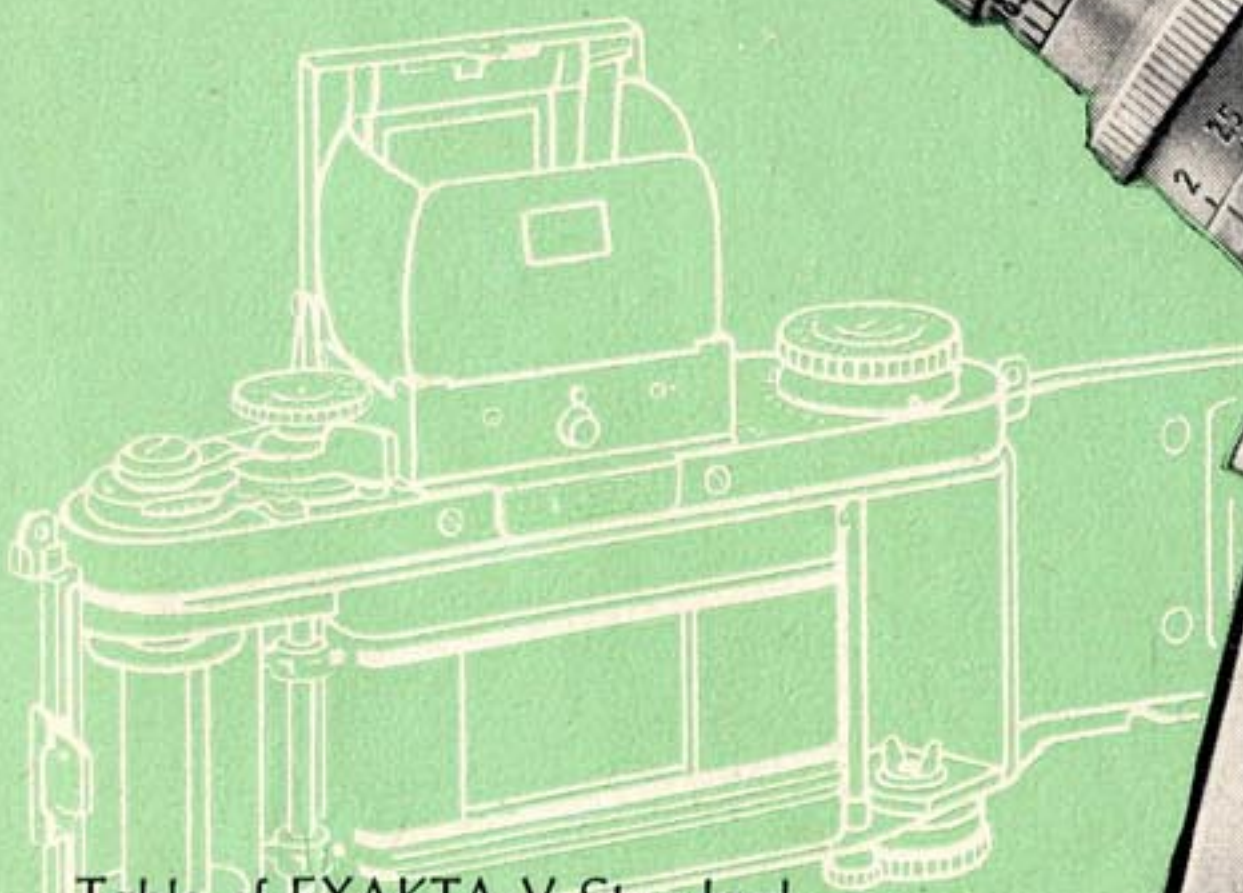
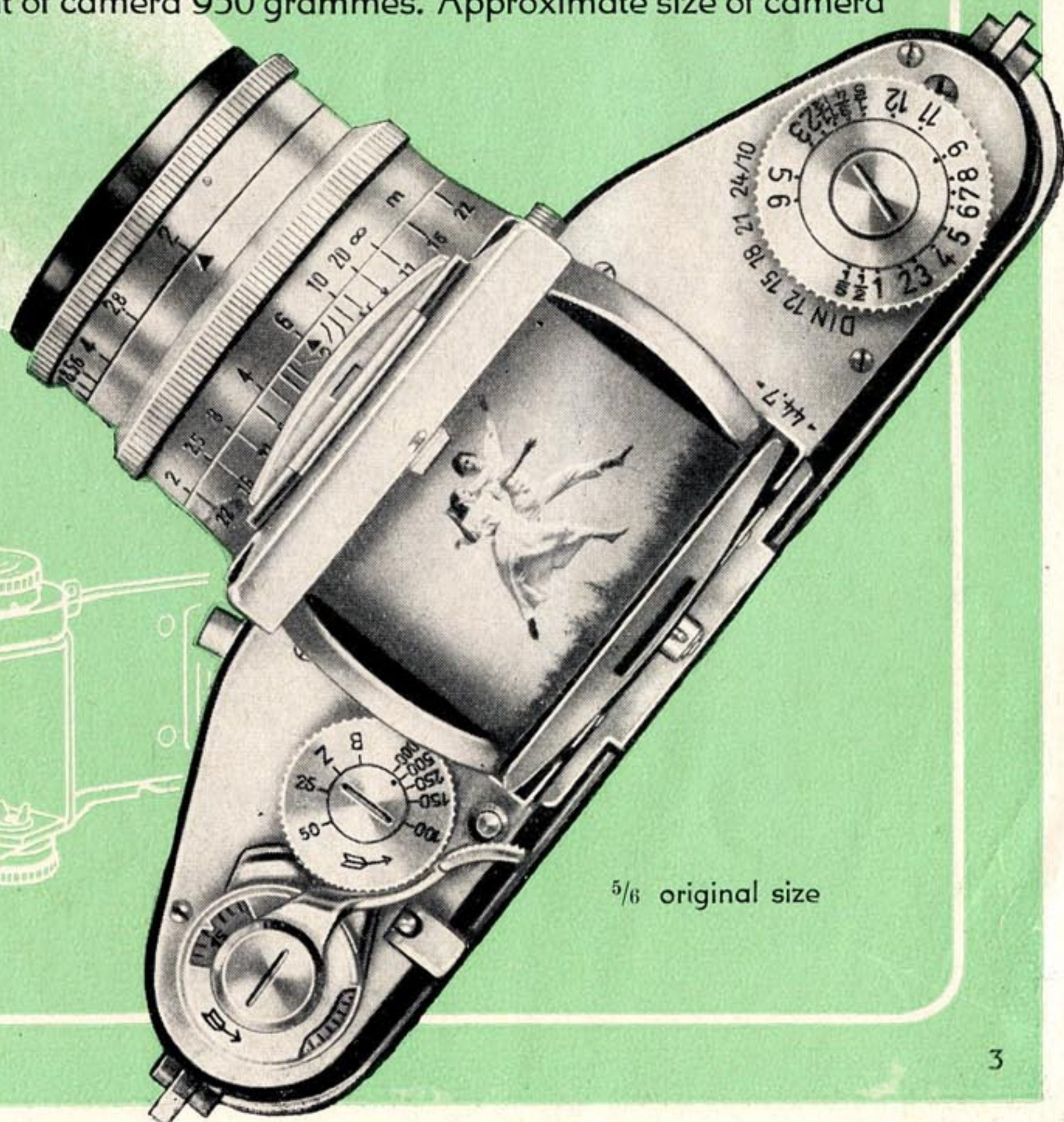


Table of EXAKTA V Standard Lenses see page 8!



$\frac{5}{6}$ original size



A new concept: The Two-System Camera
 Realized for the first time in the EXAKTA V and firmly based on the single-lens reflex principle. **Reflex Finder-Hood and Special Prism** – two alternative operative systems – allow of viewing and focusing the image. Being interchangeable the one system is used that promises the best results. In every case, however, the taking lens projects a finder image that is identical with the future photograph.

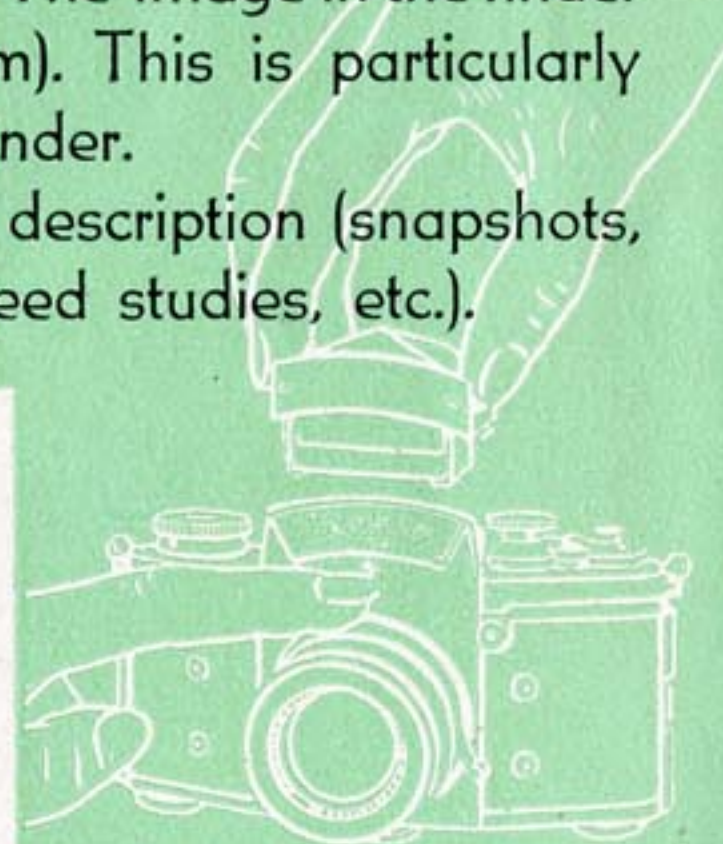
Used with the finder-hood the EXAKTA V will master the majority of photographic tasks!

Both eyes can control with ease the greatly magnified, upright, but side-reversed, ground-glass image. Camera may be held at chest-level (looking down on to ground-glass screen), over the head (turning camera upside-down and looking up into finder-hood), and, for vertical pictures, at eye-level, when working at right angles to the subject. Fields of application: portraiture, children, animals, plants, macro-photography, tripod pictures, technical work in the studio (reproductions, still-lives, micro-photography, etc.).

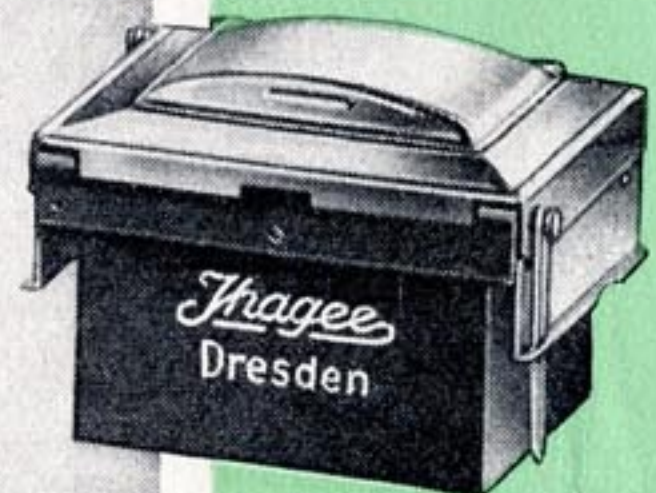
Equipped with the Special Prism the EXAKTA V becomes a "speed camera" for "speed shots"!

Laterally correct reflex image, also for vertical pictures. Direct **eye-level** vision of the subject. Direction of eye and camera always identical. The image in the finder moves in the same direction as the subject (See diagram). This is particularly important when following rapidly moving subjects in the finder.

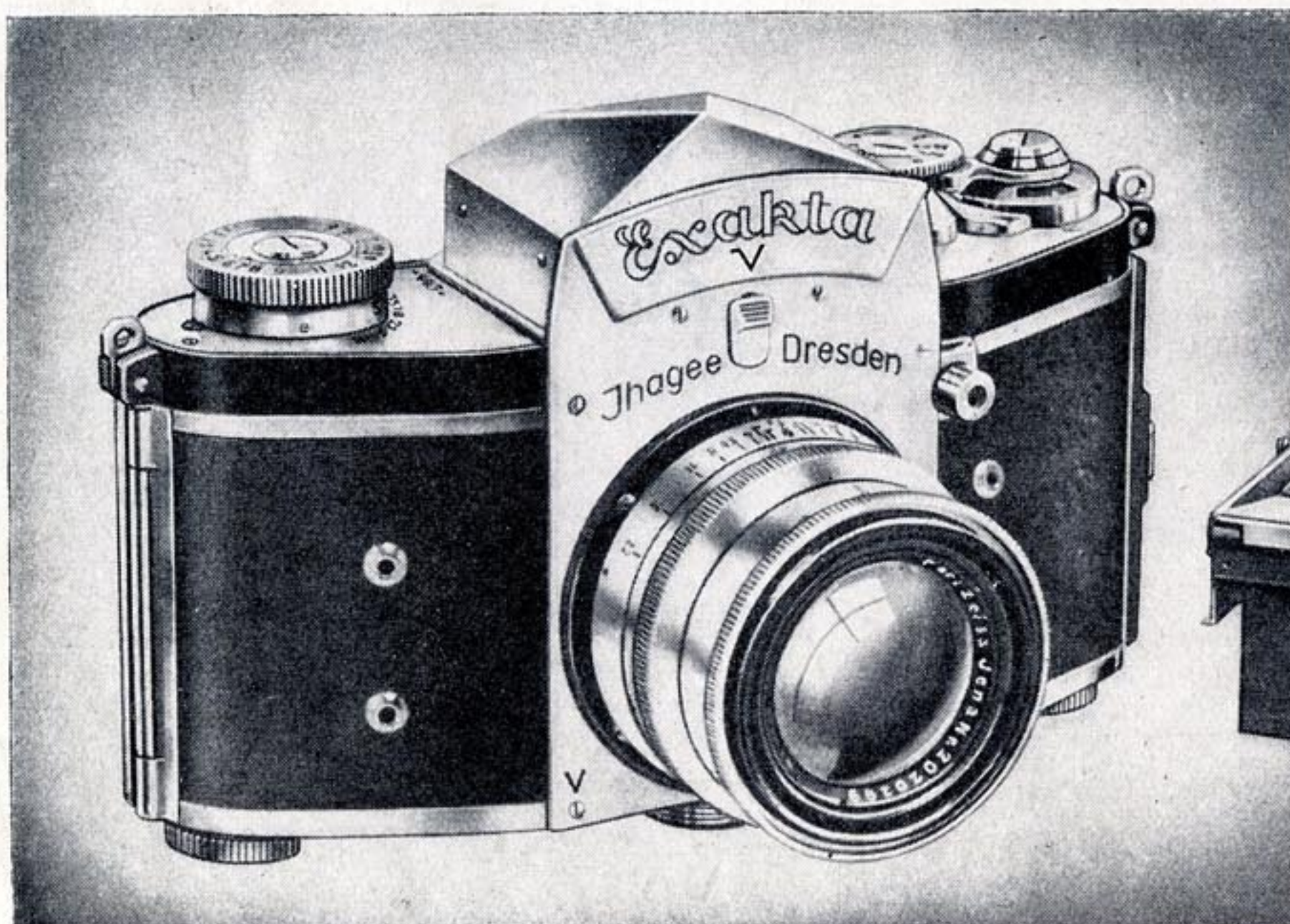
Fields of application of Special Prism: speed shots of every description (snapshots, press work pictures, sports and stage pictures, technical speed studies, etc.).



Special Prism and finder-hood are changed in a matter of seconds.



EXAKTA V with Special Prism inserted (Camera remains the same size as with reflex finder-hood), finder-hood removed.





Special lenses will help where the standard lens is not sufficient! **The ultra speed** of the 7.5 cm. f/1.5 Biotar lens ensures sufficient exposure even under adverse lighting conditions for theatre and stage work. This Biotar lens which is more than five times as fast as an f/3.5 lens, allows of taking successful shots even in illuminated thoroughfares of a town by night.

Long-focus Lenses (Tele Lenses) reproduce an enlarged image of the subject after the fashion of telescopes. Though showing a smaller angle

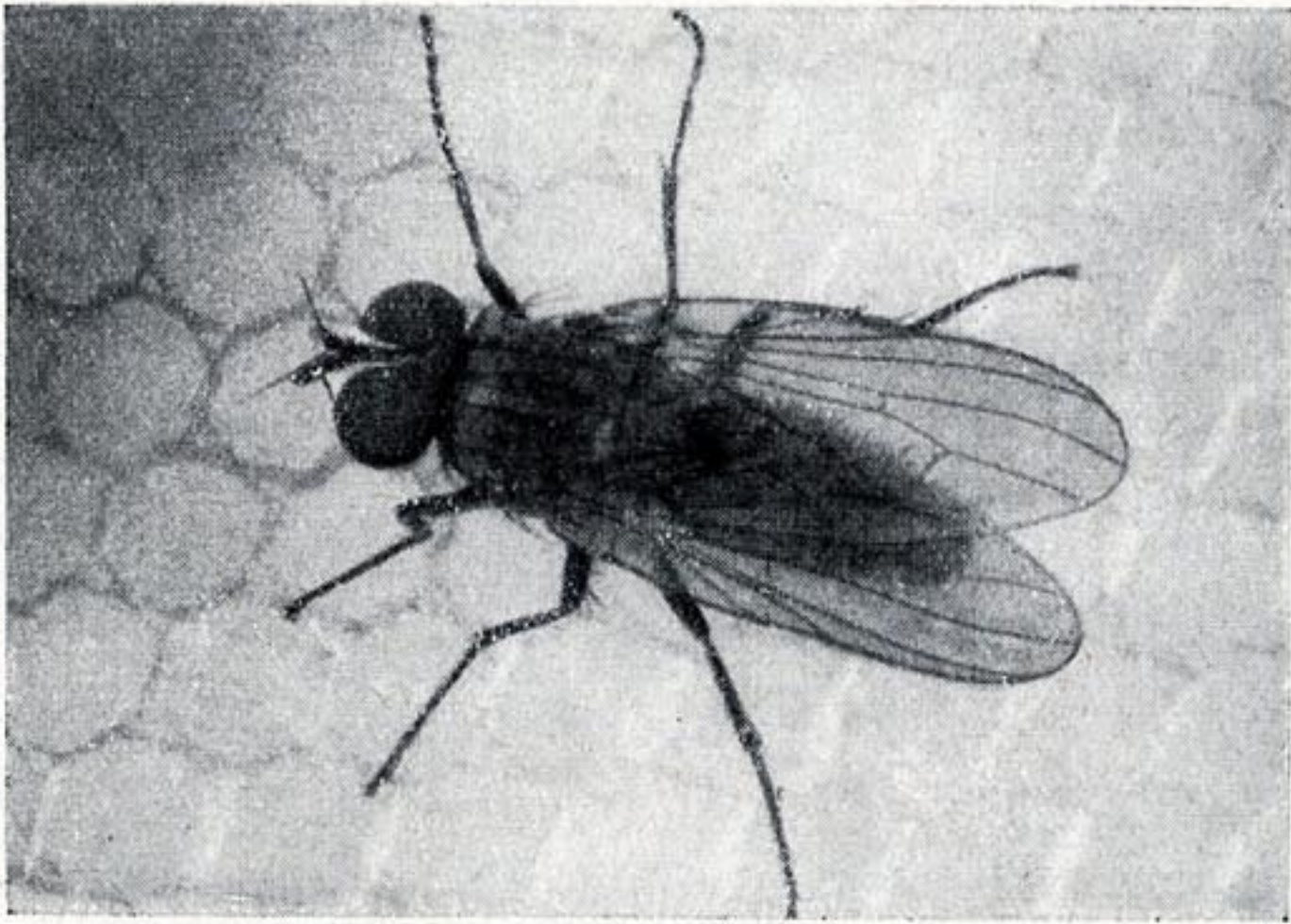
of view than the standard lens, they reproduce the reduced field bigger on the film. Tele lenses are thus useful for landscapes, architecture, animal pictures (see Illustration above), snapshots, and, on account of advantageous perspective, for portraits.

Wide-Angle Lenses showing a wider angle of view than the standard lens, reproduce the increased field smaller on the film. They are useful where the camera-subject distance is restricted, for interiors, architecture, reproduction work, etc.

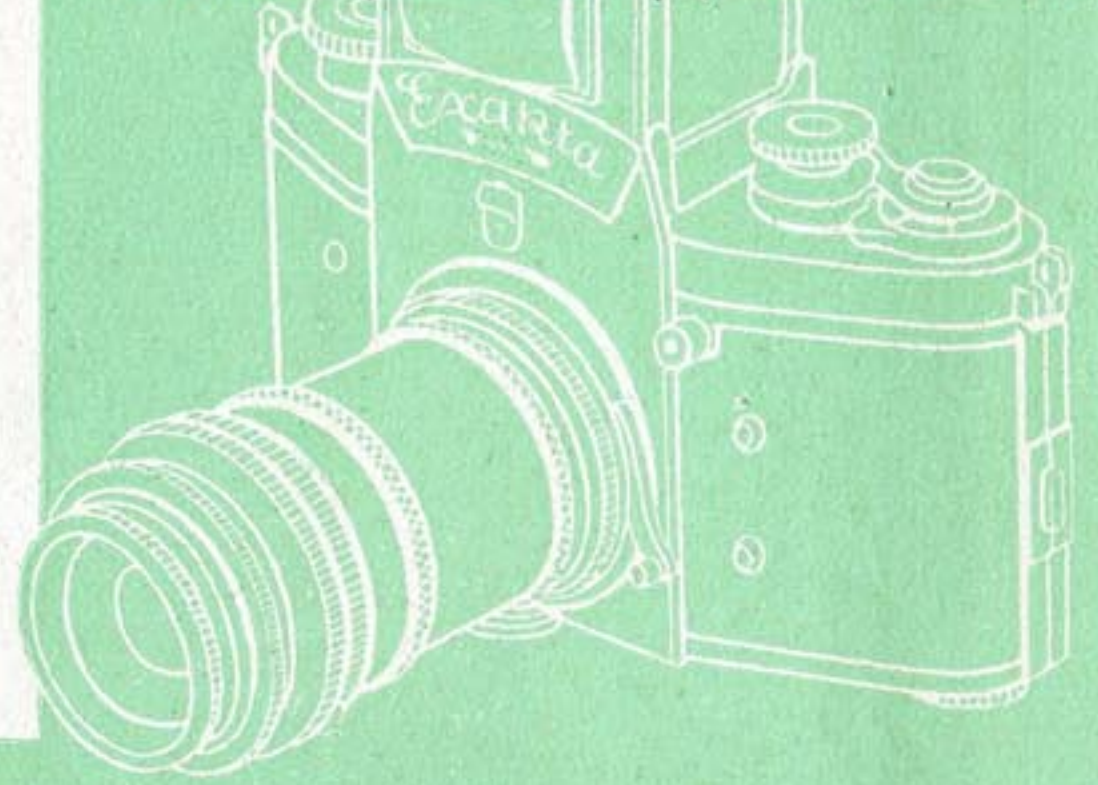
All EXAKTA V special lenses are inserted into the bayonet mount of the camera-body. The lenses themselves are fitted with a helical focusing mount for critical focusing which is always obtained by the finder image, no matter whether the finder-hood or the Special Prism is being used. There is no need whatever for additional finders.

Table of EXAKTA V Supplementary Lenses see page 8!





2 Bayonet Adapter Rings and 3 Extension Tubes (0.5 cm., 1.5 cm., and 3.0 cm.) are delivered in complete sets only. (Cat. Nos 140-144)



Increase of camera extension for close-up pictures (macro-pictures) is effected by two Bayonet Adapter Rings and any number of Extension Tubes which are inserted between the EXAKTA V and its lens. They permit to reduce the lens-to-subject distance so much that photographs up to natural size and, if required, even slightly larger than life-size can be taken.

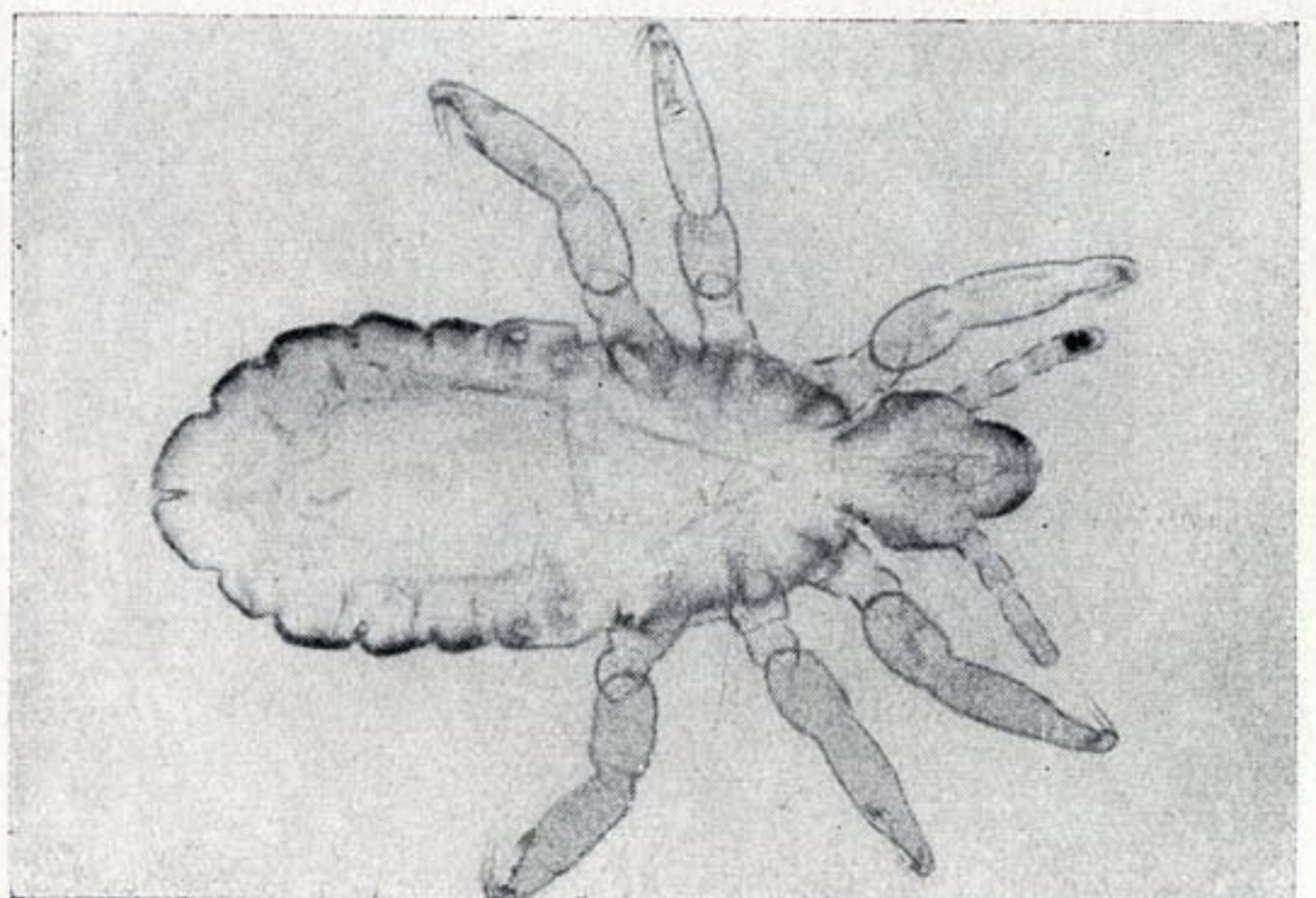
In this way, many unusual and instructive pictures can be obtained (insects, flowers, postage-stamps, coins, and all technical photographs at shortest distances)! There is no need for uncertain experimental determination of sharpness: for even in the case of the shortest lens-to-subject distances the image is focused on the reflex screen. The EXAKTA V is 100% free from parallax, and it does not know any divergence of frame which can become so annoying when taking close-ups.

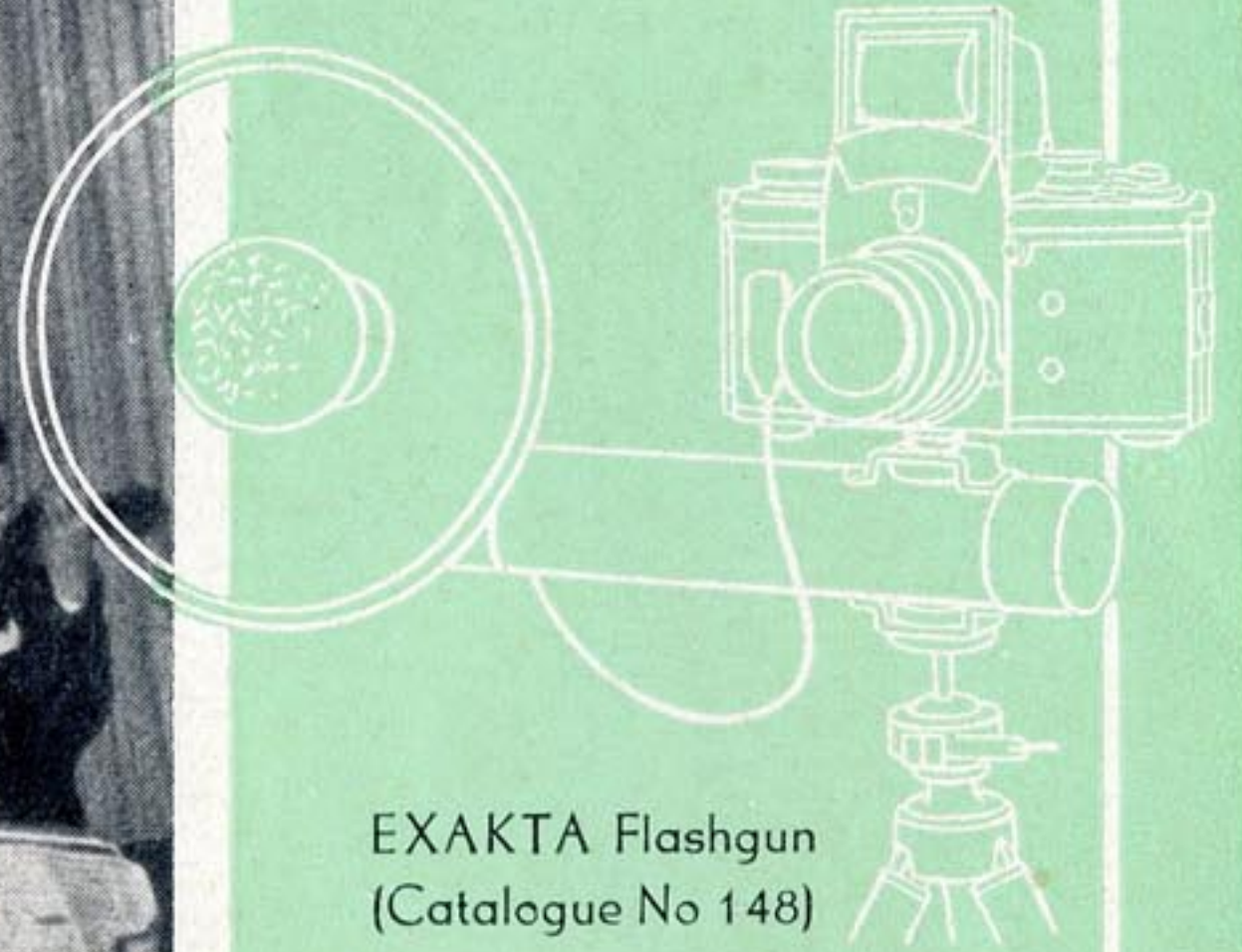
Micro Pictures require the use of the "Microscope Attachment" which connects the EXAKTA V with any microscope. The camera lens must be removed, as the eye-piece and the objective of the microscope are used instead. And again, the determination of the field covered, sharpness, depth of field, and - when taking living subjects - the favourable moment for exposure, are observed in the reflex finder.



Microscope Attachment, complete with Extension Tubes and Bayonet Adapter Ring, in case, available with
 1) hinge Cat. No 147
 2) bayonet fitting and clamping screw Cat. No 153

Further information concerning the Microscope Attachment and special ground-glass screens with clear spot etc. may be obtained from the leaflet "Micro and Macro Pictures" or from the manufacturers.





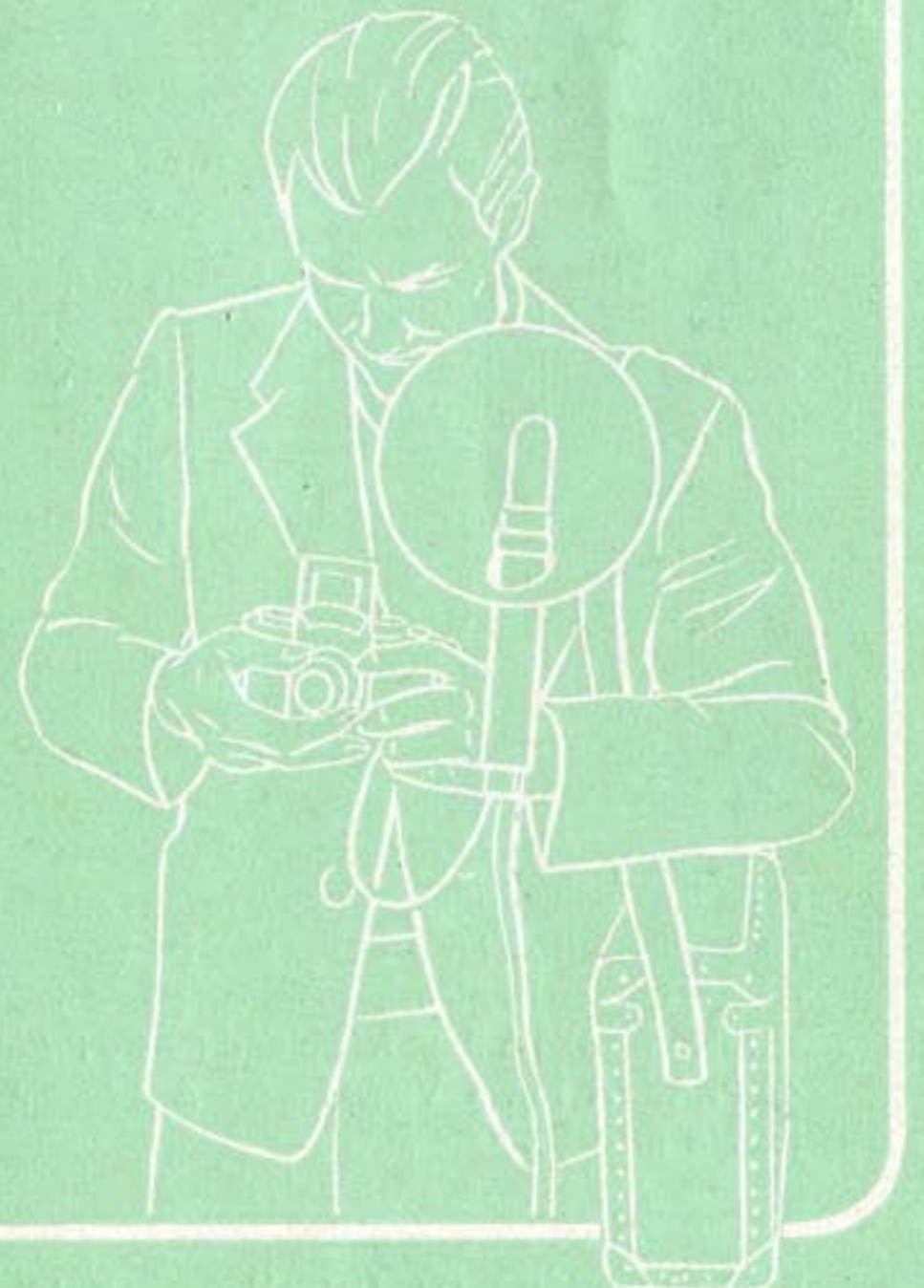
EXAKTA Flashgun
(Catalogue No 148)

Flashlight enables the up-to-date press photographer, the professional, and the amateur, to overcome all difficulties arising from unfavourable lighting conditions.

Short exposure times and medium apertures in dark rooms are only possible if flashlight is used. Therefore the EXAKTA V has been fitted with synchronized contact sockets for the two most up-to-date flashlight systems:

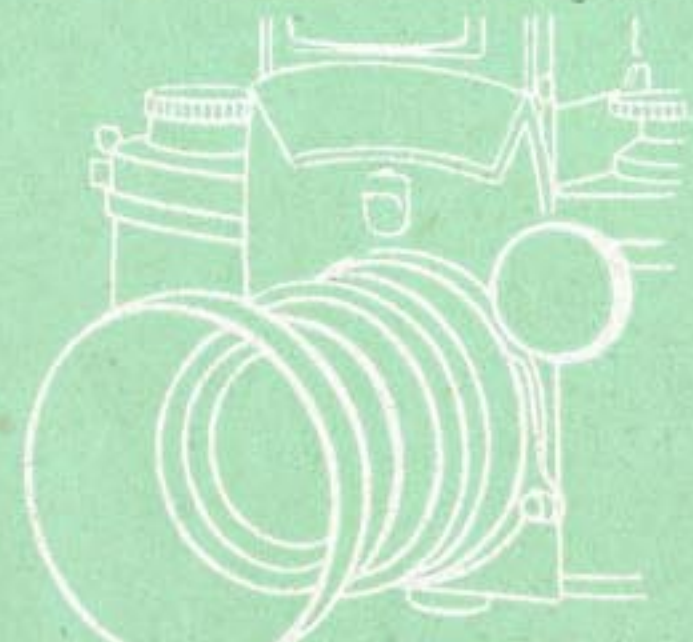
- 1) **The flash-bulb synchronization** releases shutter and flash-bulb simultaneously. A newly designed EXAKTA Flashgun is available (Cat. No 148), consisting of battery-holder, reflector, and flash-lamp with spring locking device suited for all sizes and all bases of flash-bulbs.
- 2) **The electronic flash synchronization** allows of using the EXAKTA V with the well-known electronic flash units manufactured by BLAUPUNKT, MANNESMANN, RFT, etc. Effective exposure time: $1/5000$ sec.! Consequently electronic flash is indicated for high-speed shots (sports, artistics, machinery, etc.). Shutter speed $1/50$ sec.! Impossible to imagine a more versatile camera for the press photographer than the EXAKTA V fitted with a reliable electronic flash unit!

EXAKTA V with electronic flash unit

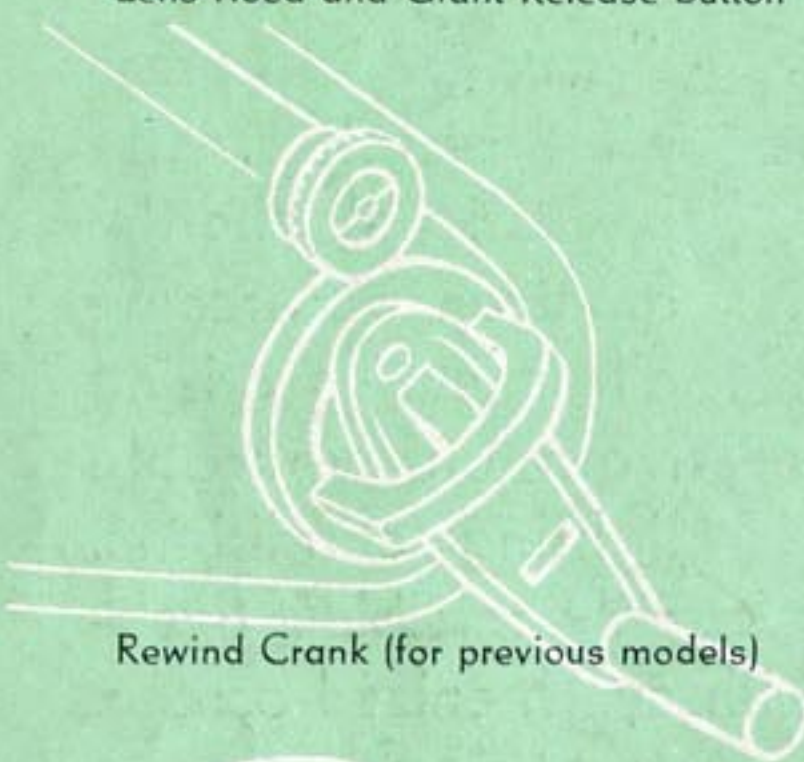




Everready Leather Case



Lens Hood and Giant Release Button



Rewind Crank (for previous models)



Filters etc.

Colour Filters (correction and effect filters)

yellow	light, medium, dark	} for 32 mm. lens front mount Catalogue No 201, for 42 mm. lens front mount Catalogue No 205	} When ordering specify colour and density!
orange	ligh		
green	ligh, dark		
red			
blue			
ultra-violet			

Soft Focus Discs for artistic soft-focus pictures
 for 32 mm. lens front mount Catalogue No 209
 for 42 mm. lens front mount Catalogue No 210

Polarizing Filters suppress annoying reflection from highly polished surfaces
 for 32 mm. lens front mount Catalogue No 213
 for 42 mm. lens front mount Catalogue No 214

For prices and conditions apply to our Export Departement. All questions concerning EXAKTA cameras will be answered by return mail free of charge. On application the following pamphlets will be sent free of charge.
 1) KINE-EXAKTA II 2) Micro and Macro Pictures 3) EXAKTA Flashgun 4) EXAKTA Prism View-Finder Attachment (designed for previous Exakta models).

Optical Equipment of the EXAKTA V 1 1/2 x 1 in.

The EXAKTA V is delivered complete with Finder-Hood and one of the following standard lenses. The Special Prism must be ordered separately as an accessory!

Lens	Focal Length	Angle of Field	Lens front mount	Catalogue No
f/3.5 Zeiss Tessar . . .	5 cm.	45°	32 mm.*	102
f/2.8 Zeiss Tessar . . .	5 cm.	45°	32 mm.*	101
f/2 Zeiss Biotar	5.8 cm.	40°	42 mm.**	104
f/1.9 Meyer Primoplan	5.8 cm.	40°	42 mm.	103

* = Use of Lens Hood and Filter Holder No 201-4 is indispensable for slip-on filters etc. of 32 mm. diameter.

** = Use of Lens Hood and Filter Holder No 205-4 is indispensable for slip-on filters etc. of 42 mm. diameter.

Special Prism (in Leather Case) Catalogue No 302

Eye-Piece for Special Prism (allowing use of corrective lenses) Cat. No 303

Table of EXAKTA V Supplementary Lenses

Lens	Focal Length	Angle of Field	lens front mount	Catalogue No
Wide-Angle f/4.5 Tessar . .	4.0 cm.	55°	32 mm.	121
Wide-Angle f/4.5 Helioplan	4.0 cm.	56°	32 mm.	108
f/1.5 Biotar	7.5 cm.	32°	57 mm.	122
f/2.8 Trioplan	10.0 cm.	24°	42 mm.	110
f/4 Triotar	13.5 cm.	18°	42 mm.	123
f/5.5 Tele-Megor	15.0 cm.	16°	39 (34) mm.	111
f/2.8 Sonnar	18.0 cm.	14°	80 mm.	118
f/5.5 Tele-Megor	18.0 cm.	14°	42 mm.	112
f/5.5 Tele-Megor	25.0 cm.	10°	53 mm.	114
f/4 Sonnar	30.0 cm.	9°	80 mm.	119
f/5.5 Tele-Megor	40.0 cm.	6°	85 mm.	115
f/8 Zeiss Long-Distance Lens	50.0 cm.	5°	80 mm.	120

All lenses are factory-coated!

Special EXAKTA V Accessories

Everready Leather Case protects the camera without impairing its operative speed,
 for camera with 5 cm. lens Catalogue No 255
 for camera with 5.8 cm. lens Catalogue No 256

Giant Release Button increasing release knob surface, facilitates releasing the shutter when wearing gloves Catalogue No 151

Lens Hoods protect lens against frontal and side stray light,
 for 32 mm. lens front mount Catalogue No 202
 for 42 mm. lens front mount Catalogue No 206

Rewind Crank simplifies and speeds up rewinding of film into cartridge of previous EXAKTA models Catalogue No 150

