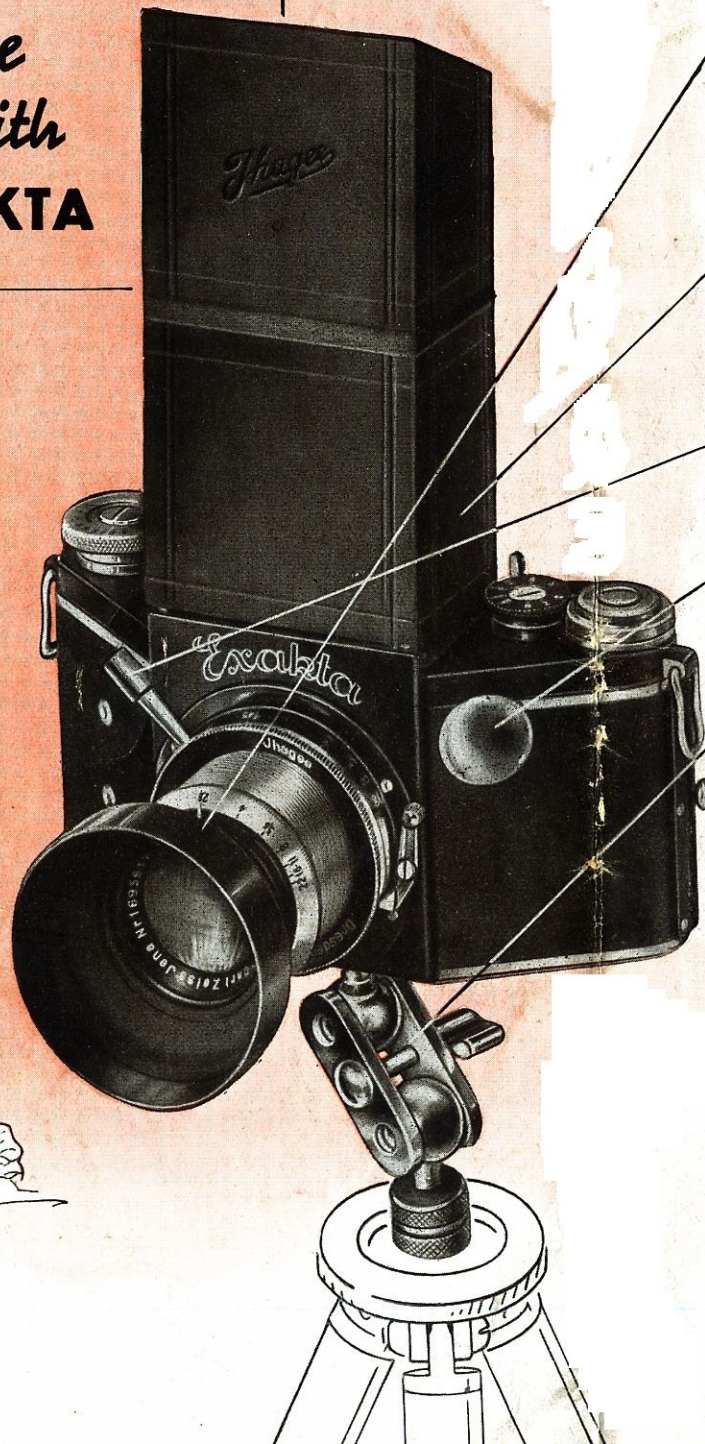


*Small Accessories  
to facilitate  
working with  
your EXAKTA*



**1** *The Lens Hood*

keeps troublesome front or side light (sun as well as artificial light) away from the lens. Indispensable for the attractive "against the light" exposures. Attached by slip-on mount to the front lens.

For all lenses except F/2 and F/1.9 . . . . . Nr. 9654  
For Night-Exakta F/2 and F/1.9 . . . . . Nr. 9656

**2** *The Light-hood Extensions*

serve for keeping side-light away from the focussing screen so as not to interfere with the brightness of the finder image.

Plain leather extension in case . . . . . Nr. 9653  
Leather light-hood extension in case, with magnifier enlarging the entire image on the screen (particularly to be recommended) Nr. 9657

**3** *The Focussing Pin*

is screwed into the focussing mount ring and facilitates adjustment of the lens . . . . . Nr. 9661

**4** *The Additional Button-Release*

facilitates releasing of shutter if thick gloves are worn in cold weather. This additional button-release increases the surface of the release button. Nr. 9662

**5** *The Ball Socket Joint*

is chiefly intended for vertical pictures if a tripod is used, but does good service also for technical photos by permitting universal adjustment of the Exakta . . . . . Nr. 9663

**EXAKTA Light Screens**

When ortho- or panchromatic material is used, Exakta Screens help to bring out correct tone values. The **Yellow Screen** for orthochromatic material. The **Green Screen** for panchromatic material. The **Blue Screen** for panchromatic material with strong sensibility to red, particularly for exposures by artificial light.—The **Red Screen** for panchromatic and infra-red material, especially for distant exposures, and also for Night-effects at daylight.

Screens with corresponding slip-on mounts are available, for the various diameters of the lenses. When ordering, please state name and aperture of lens and in case of yellow screens whether light, medium or dark is wanted.

Exakta Screens (Yellow, Green, Red or Blue) with slip-on mount up to 32 mm. diameter Nr. 9651  
up to 38 mm. diameter Nr. 9652  
51 mm. diameter  
(for Night-Exakta) . . Nr. 9655





*Caught by the* **EXAKTA**

*Three successful snapshots!*

The author of the picture of the fawn wrote that it could be taken only because his "Exakta" was instantly ready to shoot. *Pictures of children* if taken with an "Exakta" are always successful! A glance into the light-hood, a depression of the release—and the natural motion of the little ones is fixed. It's the same with portraits of adults: being always ready, the "Exakta" snaps the most vivid expression.





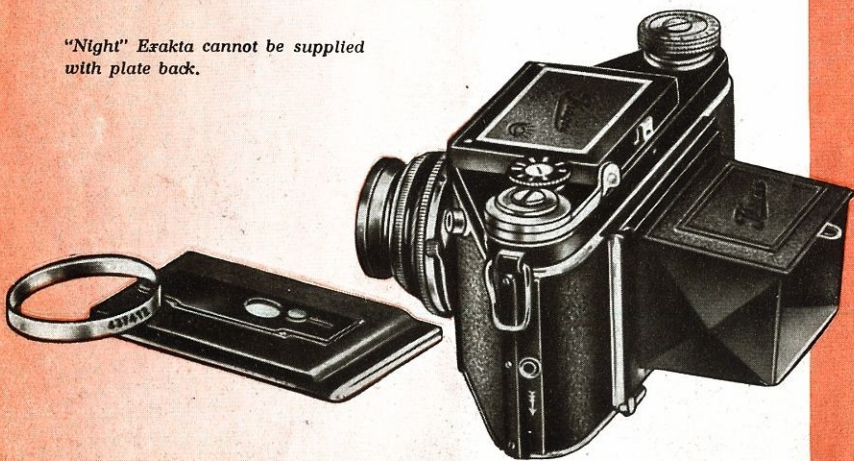
The "Exakta" is worth careful handling and protection. Therefore, when you buy a camera, purchase also a case which will protect your "Exakta" from external damage. The case shown fully surrounds the camera without, however, interfering with its readiness to use. Open the case and your camera is ready for work. A bush holds camera and case together. You can further screw the "Exakta" with its case on to a stand, as the bush has the necessary outer thread.

Exakta Every-ready Case . . . . . Nr. 7335  
(If for Night-Exakta, please mention.)

### The Plate Back of the "Exakta"

Plates instead of roll films? Yes, "Exakta" with plate back, if it is necessary to take pictures on dry plates for rapid and individual development. The reflex equipment cannot of course be used with plates, but scale and infinity stop will be handy. Furthermore, the back is equipped with a ground glass focussing screen. The prices of "Exakta" cameras (see last inside page of this list) with plate back, ground glass, and 3 metal dark slides  $2\frac{5}{16} \times 1\frac{3}{4}$ " ( $4.5 \times 6$  cm.) require an increase

"Night" Exakta cannot be supplied with plate back.



## Enlargers for EXAKTA Pictures

Although "Exakta" pictures in their original size are already splendidly effective, the reproduction on the opposite page proves nevertheless the advantages of enlargements. Successfully enlarged photos will be an ornament in your home!

### EXAKTA Lumimax

can be used in conjunction with the lens of the "Exakta", which is screwed into the mount of the Lumimax.—Focussing is done by displacing the enlarger on the frame and by means of a precision focussing mount with an extra long thread. Films need not be cut, as the "Exakta" Lumimax is fitted with a film guide. Best ventilation by means of air channels and, additionally, by turning up the reflector.

Supplied in two models:

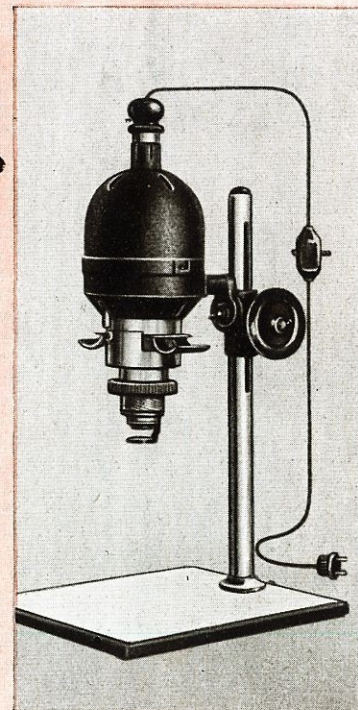
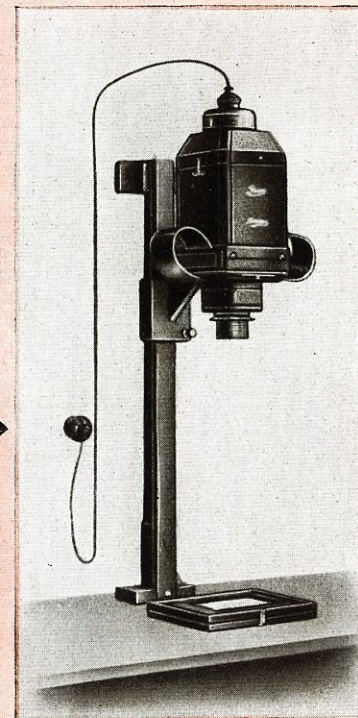
- Exakta Lumimax without condensor lens . . . . . Nr. 5950 A
- Exakta Lumimax with condensor lens (to bring out contrasts) . . . . . Nr. 5950 B
- Frame for both models . . . . . Nr. 5202 G
- Spare glass mask for smaller sizes . . . . . Nr. 5611
- Base-board . . . . . Nr. 6500

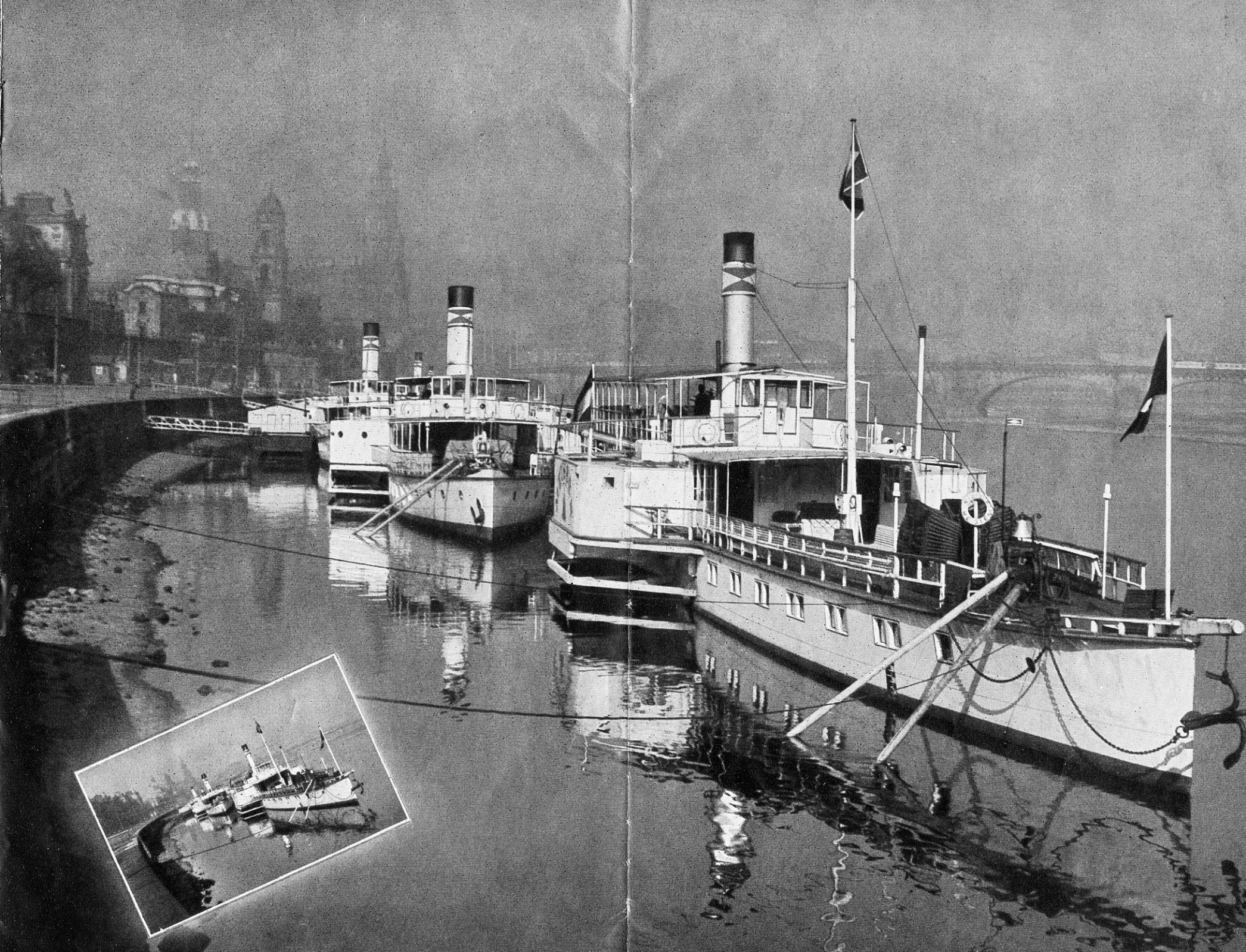
### Projection Lumimax

is an enlarger and can also be used for projection. "Exakta" negatives are printed on  $2\frac{1}{4} \times 1\frac{3}{4}$  in. ( $4.5 \times 6$  cm.) lantern plates, and everything is ready for an illustrated lecture at home. The Projection Lumimax is supplied complete with baseboard, frame, and lamphouse. Film guide, ventilation device, and condensor are provided. Focussing by friction drive and focussing mount. For projection, swing the outfit into horizontal position together with the film guide. A sliding frame for  $2\frac{1}{4} \times 1\frac{3}{4}$  in. ( $4.5 \times 6$  cm.) lantern slides facilitates projection.

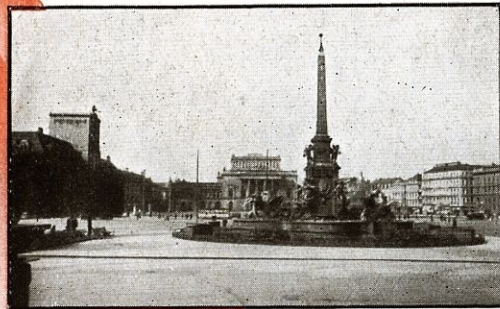
- Projection Lumimax, without lens, for taking Exakta lens . . . . . Nr. 9700
- Fixing Frame for single films . . . . . Nr. 9735
- Carrier for  $2\frac{1}{4} \times 1\frac{3}{4}$  in. ( $4.5 \times 6$  cm.) slides . . . . . Nr. 9736

Special pamphlet dealing with Projection Lumimax on application.





# Seven EXAKTA Pictures taken from the Same Position:



Wide-angle Tessar F/8,  
Foc. length 5.5 cm., View-angle 66°



Standard Lens Exaktar F/3.5,  
Foc. length 7.5 cm., View-angle 55°

Inhagee Anastigmat  
F/4.5, Foc. length  
10.5—11 cm.,  
View-angle 38°



All "Exakta" models are as a matter of principle fitted with lenses embodying highest quality and meeting all requirements.

The fundamental optical equipment of an Exakta is a lens having 7, 7.5 or 8 cm. focal length, which instantly, even when the camera is loaded, can be exchanged for a telephoto- or wide-angle lens.

A wide-angle lens produces photos on a smaller scale, which show more objects, and are therefore important for architectural, outdoor and indoor work at a limited distance.

Telephotolenses, on the other hand, show distant objects on a larger scale, but fewer of them. A telephoto lens is the telescope in the "Exakta", which is appreciated by many amateurs and all animal, sports and press photographers. With all lenses the image can always be focussed on the ground glass—a special feature of "Exakta"!



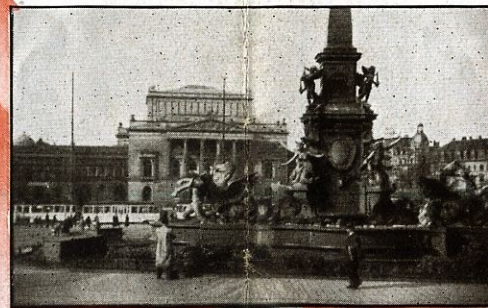
Tele-Tessar F/6.3,  
Foc. length 25 cm., View-angle 17°



Tele-Tessar F/6.3,  
Foc. length 18 cm., View-angle 24°



Tele-Megor F/5.5,  
Foc. length 15 cm.,  
View-angle 28°



Tele-Tessar F/6.3, Foc. length 12 cm., View-angle 34°

All lenses up to and including 15 cm. sharply cover the full "Exakta" size even if fully opened. Supplementary lenses require, on the other hand, more or less stopping down and thus reduce the good qualities of the objective.

With the two Tele-Tessars of 18 and 25 cm. focal length some vignetting appears on the narrow sides of the picture, which, however, does not amount to much, as in a tele-exposure the main subject is in the centre of the picture.

Lens	Focal length cm.	Nr.
Wide-angle Tessar F/8 . . . . .	5.5	9414 with fitting
Inhagee Anastigmat F/4.5 . . . . .	10.5—11	9413 with fitting
Tele-Tessar F/6.3 . . . . .	12	9411 with fitting
Tele-Megor F/5.5 . . . . .	15	9412 with fitting
Tele-Tessar F/6.3 . . . . .	18	9415 with fitting
Tele-Tessar F/6.3 . . . . .	25	9416 with fitting
Leather Case for Tele-Megor . . . . .		9417

For fitting the camera must be sent to the factory. We provide an accurate focussing scale for each lens, combine the infinity stop with that of the standard normal optical system, and, furthermore, supply for telephotolenses a mask for the frame finder of the "Exakta". In many countries the fitting of the lenses can be done by our Agents. Please ask their advice before sending the camera to us.



## The **EXAKTA** Vacu-Blitz Outfit

is connected with the release and mirror for operating the flashlight bulb and shutter, even at speeds of  $\frac{1}{100}$ th sec. The connection for this outfit is provided in every "Exakta", but the outfit is supplied separately:

### *Small Exakta Vacu-Blitz Outfit:*

1. Battery container with bush, two torch batteries and control bulb.
2. Plug for camera.
3. Holder for flashlight bulbs with large base caps.
4. Reflector.

Nr. 8472

### *Large Exakta Vacu-Blitz Outfit:*

Parts 1 to 4 as above and

5. Flexible lengthening rod,  $6\frac{1}{4}$  in. (16 cm.) long, nickelled, threaded to fit battery's shell and with screw holder for flashlight bulb or additional lengthening rods.
6. T-piece for simultaneously releasing two flashlight bulbs (one above the other).
7. Cord for distant arrangement of flashlight bulb or for connecting several flashlights in series with interposed additional batteries.
8. Clamp for fastening battery container with flashlight bulb to furniture, etc.
9. Horizontal Reflector for horizontally disposed flashlight.

Nr. 8473

*... and when the light  
of day begins to fail*

when thousands of lamps flare up, the great eye of "Exakta" looks for new subjects. That is the time for "Night-Exakta" whose powerful lenses will help the amateur to obtain any number of beautiful pictures. You can capture not only the mood of silent lanes at eventide, but obtain a snapshot of busy street life at night; your "Night-Exakta" will be your reliable recording companion, also in theatres, variety shows or when you dance and make merry. What would otherwise be the use of the large aperture lenses? And the reporter! It's part of his work to visit evening entertainments and lectures or to be present at the reception of prominent people. A press photographer simply must have good pictures, or something is wrong with him and his camera. Snapshots are important documents for him. For these reasons every "Exakta" is fitted with a Vacu-Blitz connection to permit working in poor light and at short shutter speeds. The large aperture lens and the Vacu-Blitz are an ideal combination! Picture editors of leading papers appreciate this advantage, and the "Night-Exakta" with Vacu-Blitz outfit is one of the most popular cameras for reporters.



# Micro- and Macro-Photography and Reproductions through your EXAKTA

"The Exakta" assists scientists in a pictorial reproduction of the microcosm, but also takes objects that can still be seen with the naked eye on a 1:1 scale or even slightly enlarged. Finally, it reproduces drawings, art prints, illustrations, etc.! "Exakta"—the Universal Camera.



Micro-photography is of extraordinary importance for science, and not every camera can be used for this work as well as "Exakta". Focussing by means of a ground glass ensures constant control and thus perfect pictures (important for photos of living objects). In most cases microscopical photos are produced only by the eyepiece and the objective of the microscope, and connection between the latter and the "Exakta" is

formed by the *Micro-Adapter* (System Dr. Koch).

This adapter is hinged and can be turned over at right angles thus permitting the interchange of the eyepieces of the microscope and to vary the scale of enlargement without removing the camera. The brightness of the image on the screen is a guide to fixing the time of exposure.

Price of Micro-Adapter with case . . . . . Nr. 8925

## Double Extension in your EXAKTA!

It may appear impossible, but it is nevertheless true! The Exakta Extension Tubes, screwed in between the focussing mount and the lens, produce a double extension effect. This makes it possible to obtain real close-ups of small objects, such as coins, stamps, or insects, grass, flowers, etc. The extension tubes may be had in two sizes, viz. A = 1½ cm. and B = 3 cm. As the table shows, the extensions may be joined while adding a supplementary lens for close-ups. The extension of the focussing mount and two tubes B produce the double length of the normal focal length and thus pictures of the actual size of the object (Scale 1:1). In any case, the image on the ground glass is decisive for focussing.

Price of Tube A . . . . . Nr. 8841  
Price of Tube B . . . . . Nr. 8842



**EXAKTA Small Tripod with Ball Socket Head** in 12 Sections. Length: closed 20 cm., extended 118 cm. Adjustable to all intermediate heights. Suitable for close-ups and reproductions. At a distance below one metre, tube or close-up lens required . . . . . Nr. 8070

## EXAKTA Reproduction Frame

to facilitate reproduction work by ensuring exact parallelism between object and camera. The baseboard serves also as object stage for close-ups. A friction drive permits rapid adjustment of "Exakta" to the required distance. Exactly above the centre of the baseboard the camera is screwed to a carrier arm which can also be turned up vertically if a greater distance is required.

The use of this frame is possible only with "Exakta" extension tubes. By means of the Tube A = 1½ cm. an area up to abt. 14 × 23 cm. can be reproduced in

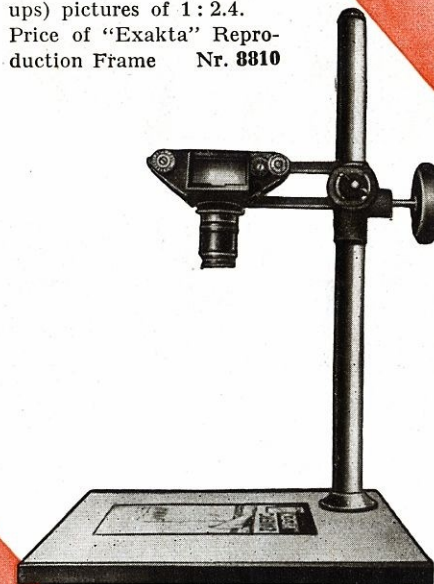
the "Exakta" picture. In the table below the values for object/picture represent the proportional numbers, e. g., 4.5:1 = 9 cm. object will be reduced to 2 cm. picture.

The following scale prevails for focussing by focussing mount at:

	infinity: object/picture	1 m.: object/picture
Tube A (1½ cm.) . . . . .	4.5:1	3 : 1
Tube B (3 cm.) . . . . .	2 : 1	1.7 : 1
Tubes A + B . . . . .	1.5:1	1.25:1
2 Tubes B in front of one another	1.1:1	1 : 1
3 Tubes B in front of one another	1 : 1.3	1 : 1.5
4 Tubes B in front of one another	1 : 1.7	1 : 2

If more than 2 tubes B are used, vignetting increasing with the number of tubes (useful picture-centre abt. 4 × 4 cm.) develops. If, in addition, the Exakta supplementary lens for close-ups is employed, on the smallest scale pictures of 2.5:1 (Tube A and lens for close-ups) are possible and on the largest scale (four Tubes B and suppl. lens for close-ups) pictures of 1:2.4.

Price of "Exakta" Reproduction Frame Nr. 8810



## EXAKTA Supplementary Lenses

The Exakta Supplementary Lens for Close-ups shortens the focal length of the lens so that one may approach the object more closely (see table below).—The Exakta Tele-Lens, on the other hand, lengthens the focal length to abt. 10.5 cm. The view-angle becomes smaller, but the size of the object increases compared with the

normal optical system approximately 50%. An extension tube is included in the price.

For all lenses except Tessar F/2.8 Price incl. Slip-on Mount and the largest apert. lenses F/2 Close-up lens Tele-lens and F/1.9 . . . . . Nr. 3641 8431  
For Tessar F/2.8 . . . . . Nr. 3642 8432  
For F/2 and F/1.9 lenses . . . . . Nr. 3643 8433

### Close-ups with EXAKTA

(Explained with respect to 2 lenses.) The table shows how closely one may approach the object. The two measurements indicate the focussing distances, measured from the object to the plane of the film. The greater measurement requires focussing by focussing mount to infinity, the smaller one focussing to shortest distance (i. e., the focussing mount is fully turned out).

Lens	w. suppl. lens for close-ups	w. Tube A	w. Tube B	w. Tubes A & B	w. suppl. lens f. close-ups Tube A	w. suppl. lens f. close-ups Tube B	w. suppl. lens f. close-ups Tubes A & B
Exaktar F/3.5 . . . . .	21—16 ins.	23—17 ins.	14—13 ins.	12½-12⅞ ins.	13⅜—12 ins.	11⅜-10⅞ ins.	10⅞-10⅜ ins.
Biotar F/2 . . . . .	64—23 ins.	not usable	15—14 ins.	13⅞-13¼ ins.	n. us.	14—13 ins.	13—12⅞ ins.

