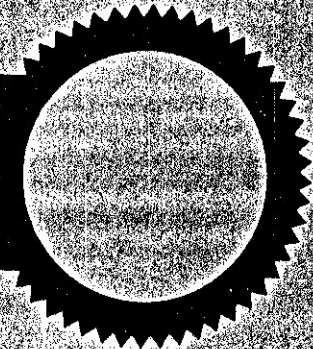
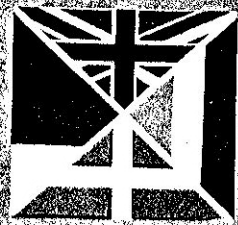


1961 INTERNATIONAL

Photo-Cine Fair

1770 *129*



maytime is
camera time

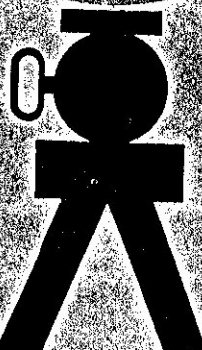
MAY 29TH
JUNE 3RD

10 am - 9 pm

Sat - 9.30 am - 7 pm

Opening Day - Trade Only
10 am - 4 pm

Admission by Trade Ticket or 10/-



NATIONAL HALL

olympia

OFFICIAL CATALOGUE 1/-

FOREWORD

To all our visitors from home and abroad, the Organizers extend a cordial welcome to the 1961 International Photo-Cine Fair. To our exhibitors, we are grateful for their loyal support in creating the largest, most comprehensive display of photographic and cine equipment ever held in the United Kingdom.

A tour of the exhibits will, we think, convince the most knowledgeable that these efforts have achieved an outstanding success.

Representatives on the numerous stands on two floors will at all times be keen to explain to you the latest discoveries and developments and advise you on your particular problems. This applies especially to those who are on the fringe of joining the millions who have made photography the greatest of all hobbies.

All enquiries should be made at Stand 32, facing the main entrance.

INTERNATIONAL PHOTO-CINE FAIR

ADVISORY COUNCIL

J. P. Newton, Esq. (Photographic Dealers' Association), J. Hunt, Esq. (Institute of British Photographers), L. J. Hardcastle, Esq. (The British Film Institute), S. A. Gregory, Esq. (Wholesale Photo Finishers' Association), A. Wood, Esq. (Amateur Photographer), N. Hall, Esq. (Photography Magazine), G. Malthouse, Esq. (Amateur Cine World), T. Rose, Esq. (Photo Trade World), J. Lucas, Esq., C. V. Raffety, Esq., F. A. Sandell, Esq., and J. J. Silber, Esq. (The Photographic Importers' Association), J. E. Balmer, Esq., R. S. Liddle, Esq., H. Loebstein, Esq., and A. J. Pincombe, Esq. (British Photographic Manufacturers' Association).

PUBLICITY BY

Mrs. Erika Schofield, British Organizers Ltd., 52 Grafton Way, London, W.1

OFFICIAL CATALOGUE

National Hall

OLYMPIA, LONDON, W.14

29th MAY to 3rd JUNE, 1961

OPEN TO THE PUBLIC

4—9 p.m. 29th May

10 a.m.—9 p.m. 30th, 31st May, 1st and 2nd June

9.30 a.m.—7 p.m. 3rd June

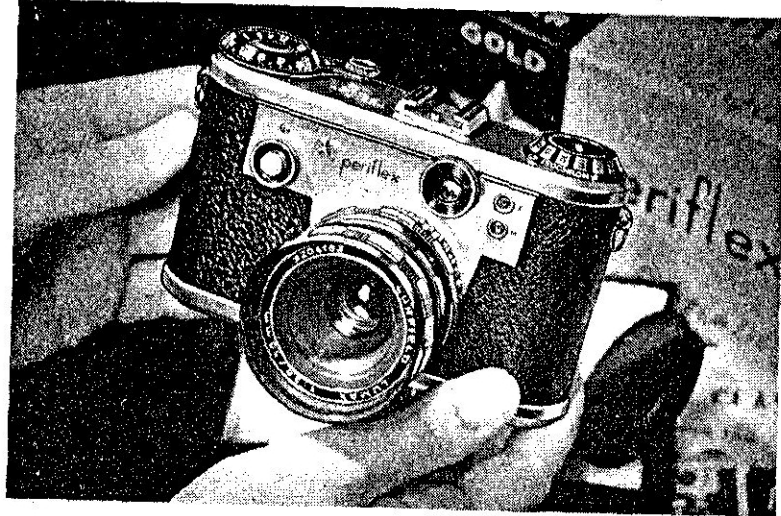
Organized by

BRITISH ORGANIZERS LTD.

52 GRAFTON WAY, LONDON, W.1

Telephone EUSon 7930

Exhibition Telephone No. . . . SHEpherds Bush 4478/9



Graduation Day

When you unwrap and use your Gold Star Periflex for the first time, you will know that at last you are there. You cannot seek much more than a Periflex will give because it is the world's most generous camera. It gives you more refinements than any other camera in its price range, and gives picture quality unsurpassed by cameras twice its price. More than anything, it gives you a wonderful world of *new* photography with Corfield Lumax lenses from 28 mm. to 400 mm.—each, instantly fitted and instantly focused. Give the Gold Star a moment's thought and you will know that it is a very special camera.

Isochron Beta precision focal plane shutter combining BOTH lens focusing systems—split image range finder and true reflex ground glass screen. Epicyclic geared film counter mechanism. Universal view-finder giving crisp, bright full image telescopic

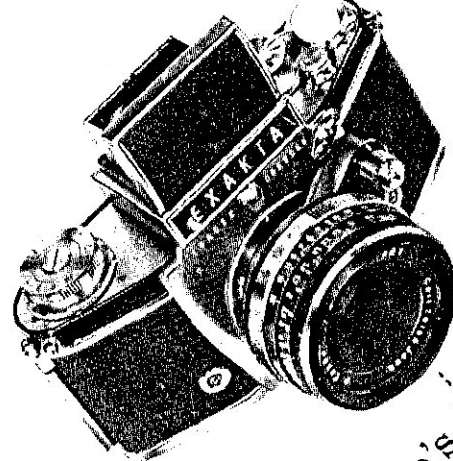
view finding. Film transported, shutter tensioned, frame number changed, periscope positioned by a single movement of the lever wind. Complete range of wide angle and telescopic lenses all instantly fitted and focused available at very reasonable prices.

Corfield **periflex**

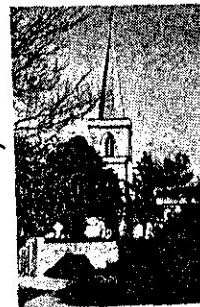
Periflex Gold Star, f2.8 50 mm. Lumax	£45 . 0 . 0
Periflex Gold Star, f2.4 50 mm. Color-Lumax	£49 . 0 . 0
Periflex Gold Star, f1.9 50 mm. Lumax	£53 . 0 . 0

K. G. CORFIELD (SALES) LTD.
33, NEWMAN STREET, LONDON, W.1. Tel: MUSeum 0581

EXAKTA CAMERAS ARE MANUFACTURED BY E. IHAGEE, KAMERAWERK, DRESDEN A16. G.D.R.

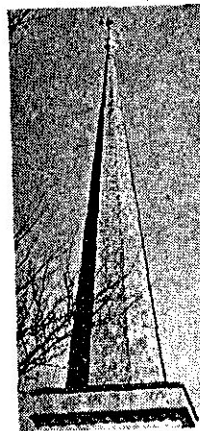


there's the church...



and here's

the steeple



The picture of the church steeple is an enlargement from part of the negative of the church and was taken with an Exakta Varex IIa camera. The film was Ilford FP3 and the exposure 1/100th sec. at f/8

The Exakta is a single lens reflex camera, for either normal reflex viewing, or, with Pentaprism, eye-level viewing. Focal plane shutter with 26 speeds from 12 secs. to 1/1000th. Slow and fast speeds are on separate dials. Provision is made for fitting a photo-electric exposure meter and/or rangefinder, if desired. The world's finest camera is complete with the world's finest lens.

Exakta Varex IIa; Primotar f3.5 50 mm. lens	£78 9 4
Exakta Varex IIa; Zeiss Tessar f2.8 50 mm. lens	£89 15 6
Exakta Varex IIa; Zeiss Pancolar f2 50 mm. lens	£108 4 6

Each with fully automatic diaphragm.

Corfield **EXAKTA**

K. G. CORFIELD (SALES) LTD.
33, NEWMAN STREET, LONDON, W.1. Tel: MUSeum 0581

EXAKTA CAMERAS ARE MANUFACTURED BY E. IHAGEE, KAMERAWERK, DRESDEN A16. G.D.R.