

# Luttons List



# Luttons List

# Luttons List

The 35mm SLR camera

1935 - 1954

A comprehensive and detailed register  
- with illustrations and appendices -  
of the production cameras

Copyright (C) 1992 T.R.Lutton

For  
my daughter  
Alison Mary Lutton

First Edition

First impression April 1992

Published and distributed by the Author

Thomas R. Lutton

P.O.Box 17

WIRRAL

Merseyside

England

L49 2SF

(To which address all communications should be sent)

Printed by

Printing Matters

3,Wellington Road

Liverpool L15 4JW

All rights reserved.No reproduction or storage or transmission in part or whole without the express and specific written permission of the Author.

Copyright (C) 1992 T.R.Lutton



# Contents

Foreword .....	9
SLR development .....	11
35mm SLR development .....	13
Author's notes .....	17
Chopm (Sport) .....	19
Exakta Kine .....	21
Praktiflex I .....	23
Alpa Reflex .....	25
Exacta Kine .....	27
Duflex (Gamma) .....	29
FECA Flex .....	31
Praktiflex II .....	33
Contax S/C .....	35
Prisma (Alpa) .....	37
Rectaflex .....	39
Exakta II .....	41
Neucaflex .....	43
Uniflex/Ucaflex/Elcafex .....	45
Exakta Varex/Exakta V .....	47
Praktica .....	49
Wrayflex .....	51
Asahiflex I .....	53
Exa .....	55
Zenith .....	57
Exakta Varex VX/Exakta VX .....	59
Alpa 4 .....	61
Alpa 5 .....	63
Alpa 7 .....	65
Periflex .....	67
Praktina .....	69
Contax D/Pentacon/Consol .....	71
Praktica FX/Praktiflex FX .....	73
Rectaflex Jnr. ....	75
Contaflex I .....	77
Rectaflex Rotor.....	79
Praktina FX .....	81
Contax E .....	83
Contaflex II .....	85
Asahiflex II .....	87
Edixa Reflex .....	89
Mecaflex .....	91
Appendix 1 - Exakta VP .....	93
Appendix 2 - Praktiflex I and variants .....	95
Appendix 3 - Alpa Standard .....	97
Appendix 4 - Exa variants .....	99
Appendix 5 - Lens serial numbers listing .....	101

## Foreword

Since that moment in summer 1986 when I asked my friend Maurice Gough, then manager of Vines Cameras in Bold St. Liverpool, "Which was the first 35mm SLR?", I have found myself driven to discover as much as possible regarding the history and development of this type of camera.

On discovering how disparate was the information already available I started to gather and collate all that I was able to find.

As a period I chose 1935 - 1954 as most of the important and significant developments seemed, to me, to have taken place between these dates.

Whilst there is still much more to learn it is now early 1992, and the time has come to make available the results of my investigations.

It should be borne in mind that on some points it is not possible to know for sure what are the facts. In these instances I have used the current consensus of opinion.

At this point I should like to put on record my genuine appreciation for the considerable help, generously given, by many fellow members of The Photographic Collectors Club of Great Britain (PCCGB), and also by members of the Exakta Collectors Club Circle.

However, it is to Mary, my wife, for her patience and her encouragement that I am most indebted.

So, with considerable humility and even more trepidation, I present my findings. It is my hope that the information contained herein will prove interesting to most readers, fascinating to some and useful to many.

Thomas Ralph Lutton  
Wirral  
England  
March 1992

## SLR development - general

- 1861 - Thomas Sutton (England) patented first SLR camera. Manufactured by Ross and Dallmeyer it sold in the 1/4 plate size at £2.75p. This design was intended for use in a studio. Very few were produced and no known example exists today.
- 1884- Calvin Rae Smith (America) patented portable SLR. Known as the 'Monocular Duplex' it had a 'sector' type mirror/shutter and was produced in quantity.
- 1889- A.D.Loman (Holland) patented first SLR with focal plane shutter.
- 1890- van Neck (Belgium) produced the 'Vanneck'. In this camera a pre-tensioned spring provided the energy for the 'instant-return' action of the mirror.
- 1892- J.D.Lysaght (England) patented SLR with system of coupling were the movement of the mirror assembly controlled the iris diaphragm of the lens.
- 1897- A number of patents filed for roll film reflexes.
- 1908- First miniature SLR produced. The 'Bijou', designed and made by Voigtlander in Germany, used VP format on plates.
- 1926- 'Plasmat Miniature Reflex', marketed in Gt. Britain by A.O. Roth, used the VP format on plates and had a 'Meyer Kino Plasmat' lens of f1.5 max. aperture.
- 1932- Design for camera having pentaprism focussing and viewing patented by Kurt Staudinger in Germany.
- 1933- 'Exakta VP' produced in Dresden by Ihagee used VP format on 127 size film. With interchangeable screw mount lenses and 'helical' focussing mount on the body it was relatively light and compact.
- 1934- 'Exakta VP' models produced with lever wind. Model 'VPB' available as the 'Night Exakta' with choice of f/2 lenses and a modified focussing mount.
- 1935- 'Cnopm' (Sport) produced in Russia. This camera was the first 35mm SLR manufactured.
- 1935- 'Exakta VP' models produced with an integral flash bulb synchronisation. Introduced concurrently was the Ihagee (on camera) 'Vacublitz' flash unit.
- 1939- Example of using TTL exposure measuring in an SLR camera patented by Karl Nucterlein in Germany.
- 1963- 'Topcon RE Super' produced in Japan. First 35mm SLR with integral TTL.

## Notes

## Author's notes

The information contained in this book is presented in good faith and is either based on fact or is the latest concensus interpretation of the available information.

Measurements should not be assumed precise:-

Flange to film plane distances have been taken to the nearest half or whole millimetre. e.g. 45.7mm is given as 45.5mm.

Lens mount thread diameter (measured as the outside dia. of the male thread) is to the nearest half or whole mm.

Strap lugs are not included in the body measurements.

In some instances body measurements have been taken to the nearest 5mm, e.g. 152mm given as 150mm or 153mm given as 155mm .

Because it is not possible to be certain precisely when each camera was first produced, the order of sequence within each year is determined on the following basis :-

(a) alphabetical for new cameras..

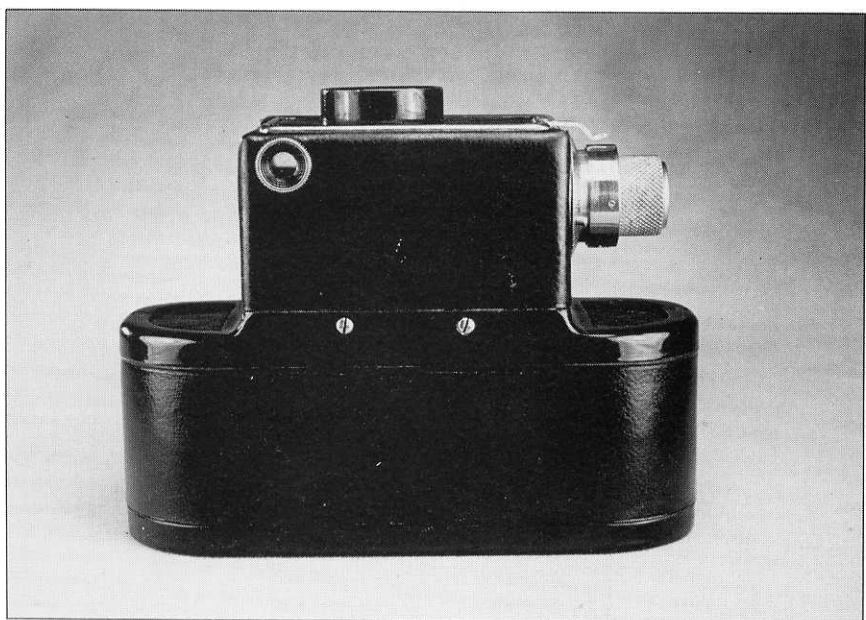
..then, where applicable....

(b) alphabetical for cameras which are modifications or developments of cameras already in production.

With the exception of the following instances where cameras produced in adjacent years have some common point, or points, of interest i.e.

(1) Neucaflex / Uniflex

(2) Contax E / Contaflex II





## Cnopm (Sport)

Production commenced :	1935
Production period :	no information
Quantity produced :	see below
Serial number notes :	Lens numbers noted between 233 and 15K.
Finish :	black paint with black leather panels.
Variants :	no information
Country of origin :	USSR
Manufacturer :	G.O.M.Z. (Leningrad)
Principal Designer :	A.O.Gelgar
Noteworthy features :	All functions, with the exception of the lens focussing, on a concentric control.
Lens mount :	bayonet with sprung lugs
Body mount :	focussing mount: 32mm throat: no coupling for lens diaphragm.
Flange to film plane :	58mm (at infinity focus)
Shutter type / travel :	Vertical metal blind with a (following) metal plate on mobile pivots.
Shutter speed range :	1/25th. - 1/500th. sec.
Flash synch. / D.A. :	no / no
Types of viewfinders :	Whole image viewing and focussing (rev) via fixed mag.. Optical finder for 50mm.
Mirror details :	Rectangular: top edge pivot: returned to viewing position by winding-on.
Exposures / Format :	50 exp. / 36x24mm (special cassettes)
Body dims (W/H/D) / Wt. :	130x102x63mm / 625gm.
Additional info. :	There is no evidence of S/Ns on bodies.
Comment :	It seems an inescapable conclusion that it was intended to number a whole unit with the serial number on its 5cm lens.

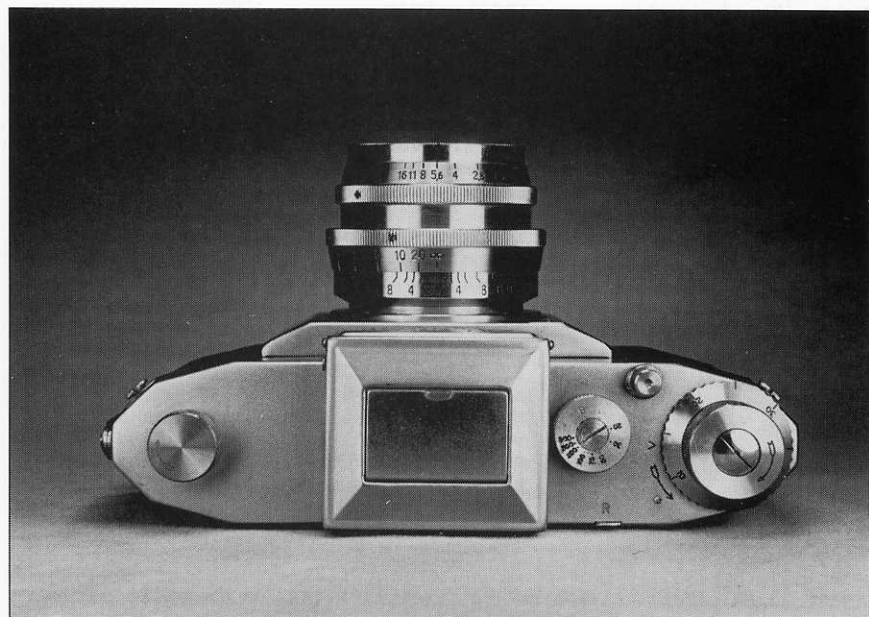






## Exakta 'Kine'

Production commenced :	1936
Production period :	1936 - 1941
Quantity produced :	80K approx. (round magnifier approx 4K)
Serial number range :	482K - 610K(V2 from 486K,V3 from C530K)
Finish :	chrome,black paint,black leather panels
Variants :	V1= round mag.(illus.above S/N 483887)
:	V2= rect. mag.(upper left S/N 496400)
:	V3= 3rd.Vac.hole(lower left S/N 539896)
Country of origin :	Germany
Manufacturer :	Ihagee (Steenbergen family),Dresden
Principal Designer :	Karl Nuchterlein
Noteworthy features :	Trapezoidal shape,left handed operation and a remarkable shutter speed range.
Lens mount :	three lug bayonet,unsprung
Body mount :	sprung,37.5mm throat (no dia. coupling)
Flange to film plane :	45mm
Shutter type /travel :	focal plane (cloth blinds) / horizontal
Shutter speed range :	12secs.- 1/1000th.sec. (dials rotate)
Flash synch. / D.A. :	sockets to fit Vacublitz/variable delay
Types of viewfinders :	Whole image viewing and focussing (rev) via WLF+mag.Direct frame for 50-58 lens
Mirror details :	Rectangular with cut away front corners and rear edge pivots.Mirror is returned to viewing position by winding-on.
Exposures / Format :	36exp. / 36x24mm.
Body dims(W/H/D)/Wt. :	150x95x50mm / 700gm.
G.B.price 1937 :	with Exaktar £27.50: with Biotar £55.00
Additional info. :	Prod. re-comm. 1946,with modifications.
Comment :	The first 35mm SLR 'system' camera.





## Praktiflex 1

Production commenced :	1939
Production periods :	1939 - 1942 and 1946 - 1949
Quantity produced :	1939-42 approx. 7K : 1946-49 approx. 23K
Serial number notes :	see appendix 2
Finishes with S/No. :	see appendix 2
Variants :	see appendix 2
Country of origin :	Germany
Manufacturer :	Kamera Werkstätten (Niedersedlitz)
Principal Designer :	uncertain - possibly Beno Thorsch
Noteworthy features :	First 35mm SLR with screw mount lenses. Mirror actuated and directly controlled by the movement of the shutter release.
Lens mount :	40mm.screw
Body mount :	40mm.screw (no coupling for diaphragm)
Flange to film plane :	44mm
Shutter type /travel :	focal plane (cloth blinds) / horizontal
Shutter speed range :	1/20th.-1/500th.sec.(later from 1/25th) (dial rotates during wind-on /exposure)
Flash synch. / D.A. :	no / no
Types of viewfinders :	Whole image viewing and focussing (rev) via WLF+mag.Direct frame for 50-58 lens
Mirror details :	Rectangular with underset hinge points. Moves in reverse unison with the action of the shutter release.
Exposures / Format :	36exp. / 36x24mm.
Body dims(W/H/D)/Wt. :	150x85x50mm. / 675gm.
G.B.price 1939 :	£16 (with f2.9 Victor)
Additional info. :	Allocated to German Navy in early 1940s
Illustrations :	above V3b (S/N 3138),left V4 (S/N 6550)





## Alpa Reflex / Bolsey G (USA)

Production commenced :	1942
Production period :	1942 - 1952
Quantity produced :	Alpa Reflex app. 5K / Bolsey G app. 300
Serial number range :	13K - 25K
Finish :	chrome plate with black leather panels.
Variants :	conversion to Prisma or from a Standard
Country of origin :	Switzerland
Manufacturer :	Pignons SA (Bourgeois family)
Principal Designer :	Jacques Bogopolsky(aka Bolsky + Bolsey)
Noteworthy features :	Mirror movement actuated and controlled by the shutter release-as Praktiflex I.
Lens mount :	bayonet with three sprung lugs
Body mount :	36mm.dia.throat (no diaphragm coupling)
Flange to film plane :	35mm. (a remarkable feature)
Shutter type /travel :	focal plane (cloth blinds) / horizontal
Shutter speed range :	1sec.- 1/1000th. (inactive dial)
Flash synch. / D.A. :	no / no (synch. on late examples)
Types of viewfinders :	Whole image viewing and focussing(rev.) via WLF + mag..Optical finder for 50mm. lens and a separate rangefinder system.
Mirror details :	Rectangular,on mobile pivots-to move up and back and a mirror lock-up facility.
Exposures / Format :	36exp. / 36x24mm.
Body dims(WxHxD)/Wt. :	140x80x40mm / 500gm.
U.S. price 1951 :	\$350 with Xenon 50/2
Additional info. :	Prototypes made in the period 1939-1942 were marked Bolsflex,Viteflex,Teleflex. Alpa Standard(rangefinder only)was made concurrently with Alpa Reflex:see App.3

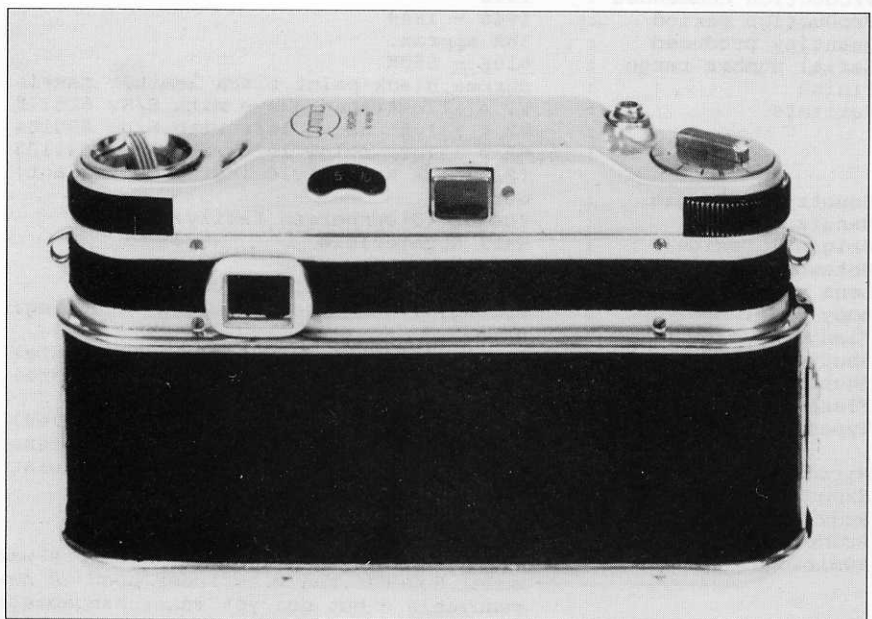
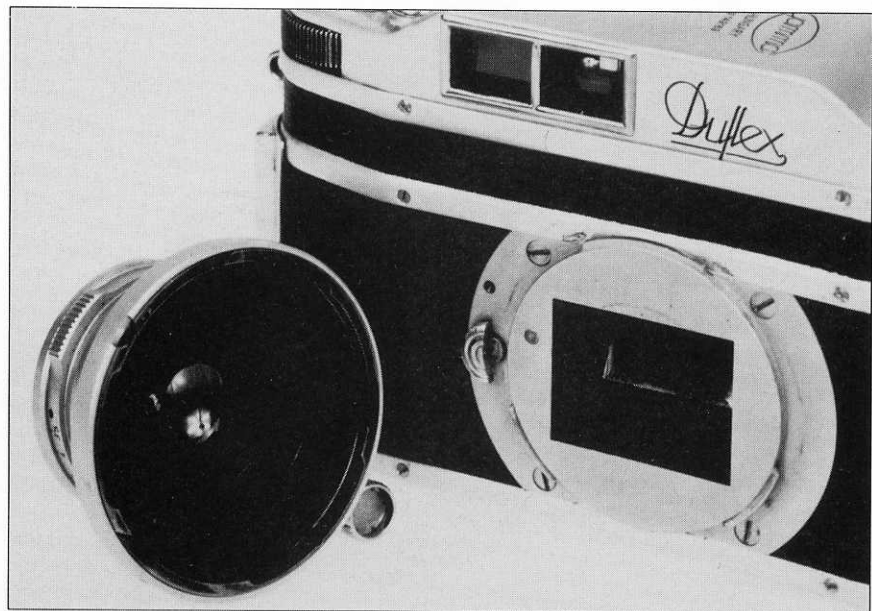




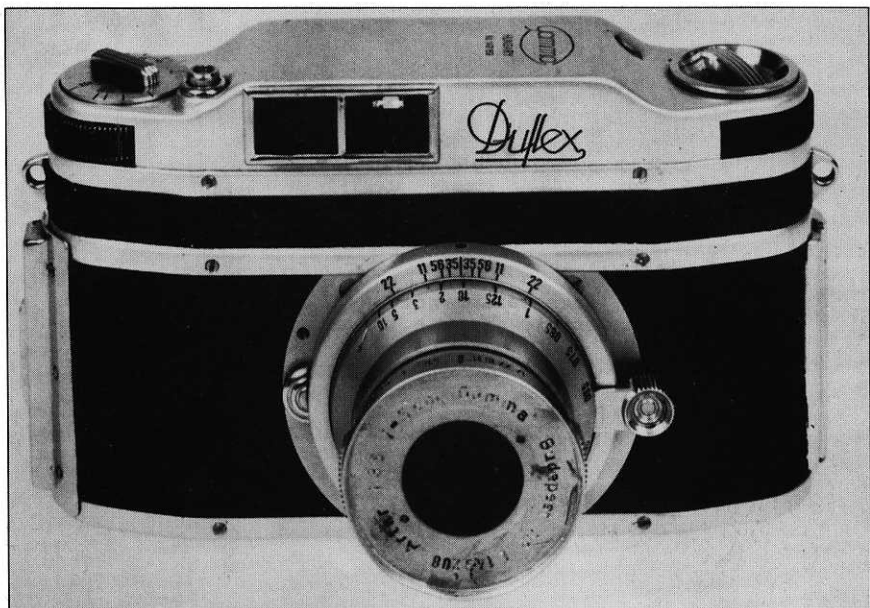


## Exakta 'Kine'

Production commenced :	1946
Production period :	1946 - 1949
Quantity produced :	38K approx.
Serial number range :	610K - 650K
Finish :	chrome, black paint, black leather panels
Variants :	V1 = illustrated above with S/No 615378
	V2 = illus. above left with S/No 630104
	V3 = illus. below left with S/No 649108
	(S/speeds knob style indicates variant)
Country of origin :	Germany
Manufacturer :	Ihagee (Steenbergen family)
Original Design :	Karl Nuchterlein
Noteworthy features :	as per pre-war Kine
Lens mount :	three lug bayonet, unsprung
Body mount :	sprung, 37.5mm throat (no dia. coupling)
Flange to film plane :	45mm
Shutter type / travel :	focal plane (cloth blinds) / horizontal
Shutter speed range :	12secs. - 1/1000th.sec. (dials rotate)
Flash synch. / D.A. :	yes / yes
Types of viewfinders :	Whole image viewing and focussing (rev) via WLF+mag. Direct frame for 50-58 lens
Mirror details :	as pre-war but is now fully rectangular
Exposures / Format :	36exp. / 36x24mm.
Body dims(W/H/D)/Wt. :	150x95x50mm / 675gm.
Price :	no information
Additional info. :	Externally little different from pre-war model. However, the viewfinder hood is now removable - but not yet interchangeable!!
Comment :	Production almost certainly re-comm. 1946





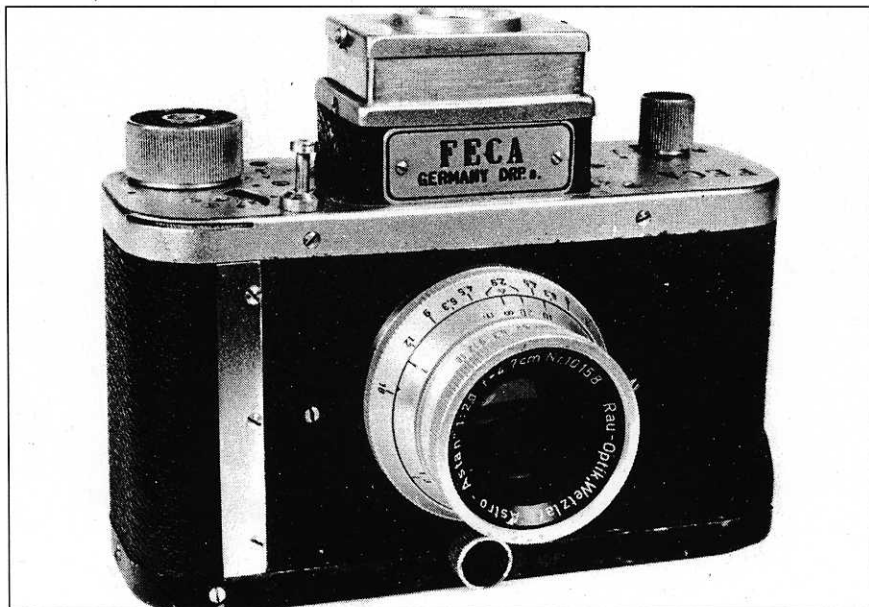


## Duflex

Production commenced :	1947
Production period :	1947 - 1949
Quantity produced :	500 approx.
Serial number notes :	no information
Finish :	chrome plated with black leather panels
Variants :	no information
Country of origin :	Hungary
Manufacturer :	Gamma Engineering (Budapest)
Principal Designer :	Jeno Dulovits
Noteworthy features :	RWR eye level reflex V/F,IRM,internally coupled auto - diaphragm,B/L V/F frames for 35/50/90mm,and metal shutter blinds
Lens mount :	internal bayonet
Body mount :	three lug external bayonet
Flange to film plane :	no information
Shutter type/ travel :	focal plane (metal blinds) / horizontal
Shutter speed range :	1sec.- 1/1000th.sec. (inactive dial)
Flash synch. / D.A. :	no / no
Types of viewfinders :	80% of the image is viewed and focussed via a 'porro-prism'.Also has a B/L V/F.
Mirror details :	'instant-return'
Exposures / Format :	42exp. / 32x24mm.
Body dims(W/H/D)/Wt. :	145x110x??mm / 750gm.with its 50mm lens
Price :	no information
Additional info. :	Only the 5cm lens is known to exist.
Comment :	First 35mm SLR to have the facilites as listed above.Shutter on Cnopm was of a different type with a vertical movement
Illustrations :	copyright Fred Spira

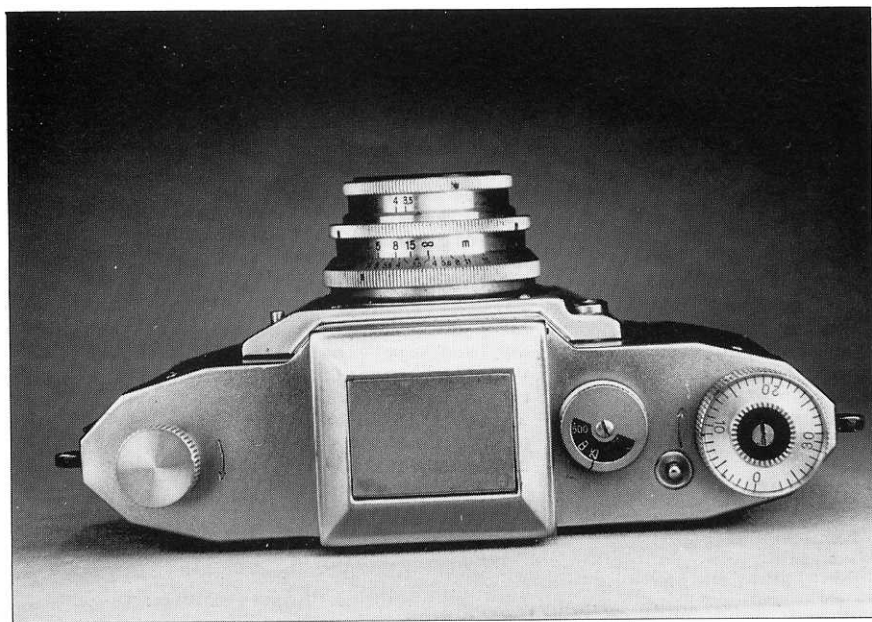
Illustration not available  
for use in this impression

Illustration not available  
for use in this impression



## FECA Flex

Production commenced :	1947
Production period :	1947 - 195?
Quantity produced :	no information
Serial number notes :	no information
Finish :	chrome plate with black leather panels
Variants :	no information
Country of origin :	Germany (W.Germany from September 1949)
Manufacturer :	Camerabau Vormbruck (Kempten / Allgau)
Principal Designer :	no information
Noteworthy features :	may be similar to 'Sport'
Lens mount :	no information
Body mount :	no information
Flange to film plane :	no information
Shutter type / travel :	no information
Shutter speed range :	1/20th. - 1/500th. sec.
Flash synch. / D.A. :	no / no
Type of viewfinder :	Whole image viewing and focussing (rev) via fixed magnifier lens.
Mirror details :	no information
Exposures / Format :	36 exp. / 36x24mm.
Body dims. / Weight :	no information
Price :	no information
Illustration :	courtesy H.D. Abring





## Praktiflex II

Production commenced :	1947
Production period :	1947 - 1951
Quantity produced :	25K approx.
Serial number range :	44K - 70K
Finish :	chrome with black (leathercloth) panels
Variants :	V1 = 40mm mount
:	V2 = 42mm mount
Country of origin :	Germany (from September 1949, E. Germany)
Manufacturer :	Kamera Werkstätten (Niedersedlitz)
Design :	modification of Praktiflex I
Noteworthy features :	shutter release on front
Lens mount :	see above
Body mount :	see above (no diaphragm coupling)
Flange to film plane :	44mm
Shutter type /travel :	focal plane (cloth blinds) / horizontal
Shutter speed range :	1/25th.sec.- 1/500th.sec. (dial rotates)
Flash synch. / D.A. :	no / no
Types of viewfinders :	Whole image viewing and focussing (rev) via WLF+mag. Direct frame for 50-58 lens
Mirror details :	Rectangular with underset hinge points. Mirror now remains up after exposure to return to the viewing position with the wind-on.
Exposures / Format :	36exp. / 36x24mm
Body dims(W/H/D)/Wt. :	150x85x50mm. / 600gm.
U.S. price 1950 :	\$100
Additional info. :	It is likely that Models I and II were manufactured concurrently for a period.
Illustrations :	above V1 and left V2 with added synch.

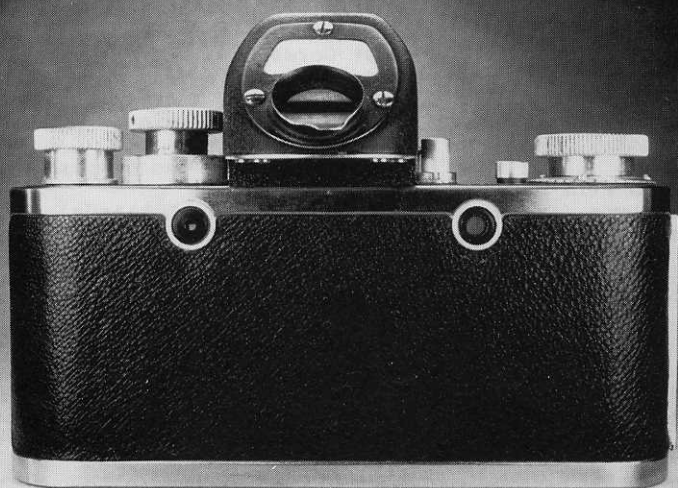
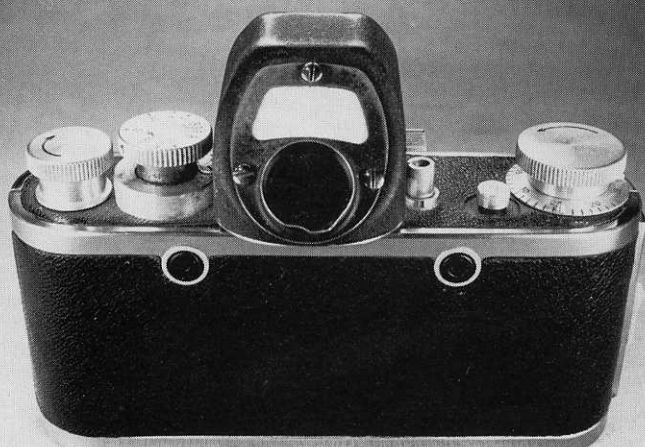




## Contax S / Contax C

Production commenced :	1949(S), 1950(C)
Production period :	1949 - 1952
Quantity produced :	insufficient information
Serial numbers :	insufficient information
Finish :	chrome plate with black leather panels.
Variants :	see below
Country of origin :	East Germany
Manufacturer :	Zeiss Ikon (Dresden)
Head of Design :	W.Winzenburg
Noteworthy features :	A very compact design - with pentaprism
Lens mount :	42mm.screw
Body mount :	42mm.screw (no diaphragm coupling)
Flange to film plane :	45.5mm
Shutter type /travel :	focal plane (cloth blinds) / horizontal
Shutter speed range :	1 sec.- 1/1000th.sec. (dial rotates)
Flash synch. / D.A. :	yes (in the tripod socket)/ not on some
Type of viewfinder :	Whole image viewing and focussing (RWR)
Mirror details :	rectangular with rear edge pivot
Exposures / Format :	36exp. / 36x24mm.
Body dims(HxWxD)/Wt. :	150x85x50mm. / 550gm.
U.S.price 1950 :	\$475 with 58/f2 Biotar
Additional info. :	Difference between S+C(according to the manufacturer)is 'improved shutter speed setting'. Exactly what this means is not yet subject to a consensus.
Comment :	It has been written elsewhere that this camera is similar to the 1942'Reflex S' design by Gamma (Budapest).
Illustrations :	S/No of the example illustrated is 2130



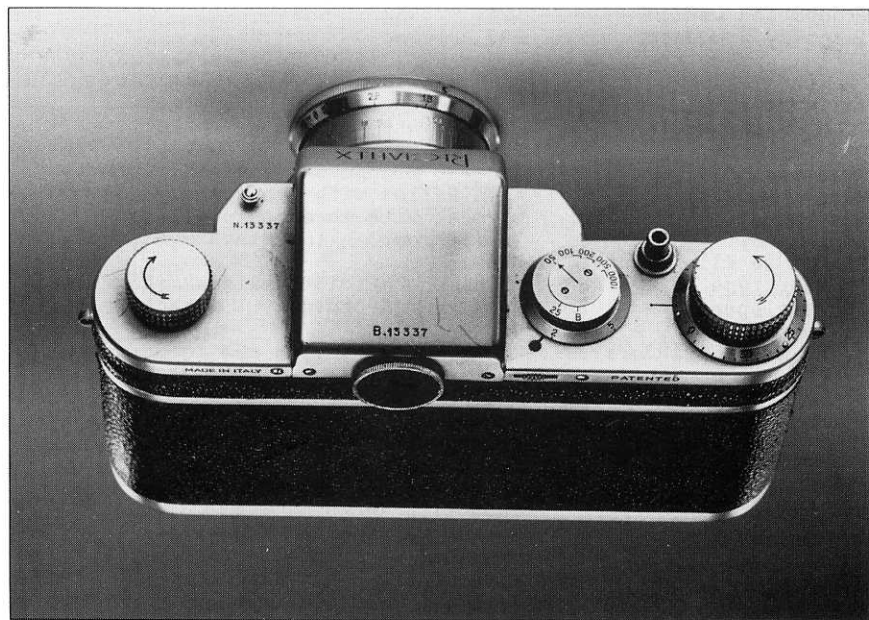






## Alpa Prisma

Production commenced :	1949
Production period :	1949 - 1952
Quantity produced :	900 approx.
Serial number range :	20K - 25K (example illustrated 24758)
Finish :	chrome plate with black leather panels
Variants :	no information
Country of origin :	Switzerland
Manufacturer :	Pignons SA (Bourgeois family)
Principal Designer :	Jacques Bogopolsky (aka Bolsky/Bolsey)
Noteworthy features :	Alpa Reflex with a pentaprism on top!!
Lens mount :	bayonet with three sprung lugs
Body mount :	36mm.throat (no diaphragm coupling)
Flange to film plane :	35mm.
Shutter type /travel :	focal plane (cloth blinds)/ horizontal
Shutter speed range :	1sec.- 1/1000th.sec. (inactive dial)
Flash synch. / D.A. :	yes / no
Types of viewfinders :	Whole image viewing and focussing with pentaprism (image viewed at 45deg) and optical V/F for 50mm.plus rangefinder.
Mirror details :	Rectangular,on mobile pivots - to move up and back - and with mirror lock-up.
Exposures / Format :	36exp./ 36x24mm.
Body dims(WxHxD)/Wt. :	140x100x40mm(body)55mm(prism) / 550gm.
U.S.price 1951 :	\$425 with Xenon
Additional info. :	Both Alpa Standard and Reflex could be upgraded to Prisma by Pignons.
:	With Contax S and Rectaflex one of the earliest produced pentaprism reflexes.
:	First example fabricated 1947-No.20425





## Rectaflex

Production commenced :	1949
Production period :	1949 - 1955
Quantity produced :	20K approx.
Serial number ranges :	in several blocks from 1K to about 32K.
Finish :	chrome plate with black leather panels.
Variants :	V1 = film cutter : 2 flash syn. sockets
	V2 = cutter discontinued: 2 syn sockets
	V3 = 3 flash synch. sockets
	V4 = 2 flash synch. sockets : 1/1300th.
Country of origin :	Italy
Manufacturer :	Rectaflex S.p.A. (founder: Sig.T.Corsi)
Original Design :	Sig.Assenza
Noteworthy features :	Mirror movement actuated and controlled by the shutter release-as Praktiflex I.
Lens mount :	bayonet with three sprung lugs
Body mount :	unsprung with 47.5mm.throat(no lens dia coupling)
Flange to film plane :	43.5mm.
Shutter type /travel :	focal plane (cloth blinds) / horizontal
Shutter speed range :	1sec.-1/1000th.V1-V3 and 1/1300th.on V4 (fast speeds dial rotates)
Flash synch. / D.A. :	yes (adjustable on V4) / yes
Type of viewfinder :	Whole image viewing and focussing using integral pentaprism.
Mirror details :	rectangular with rear edge pivot
Exposures / Format :	36exp. / 36x24mm.
Body dims(WxHxD)/Wt. :	155x90x50mm. / 700gm.
G.B.price 1952 :	£150 with Xenon f2/50mm
Comment :	Inovative and high spec. camera system.





## Exakta II

Production commenced :	1949
Production period :	1949 - 1950
Quantity produced :	V1 = 6K approx. V2 = 16K approx.
Serial number range :	650K - 672K
Finish :	chrome/black paint/black leather panels
Variants :	V1= sharp top edge to scutcheon (above) V2= formed top to scutcheon(lower left)
Country of origin :	E.Germany
Manufacturer :	Ihagee (Steenbergen family),Dresden
Original Design :	Karl Nuchterlein
Noteworthy features :	as Exakta Kine
Lens mount :	three lug bayonet,unsprung
Body mount :	sprung,throat dia. 37.5mm (black alloy) no diaphragm coupling
Flange to film plane :	45mm
Shutter type /travel :	focal plane (cloth blinds) / horizontal
Shutter speed range :	12secs.- 1/1000th.sec. (dials rotate)
Flash synch. / D.A. :	yes / variable
Types of viewfinders :	Whole image viewing and focussing (rev) via WLF+mag..Direct frame for 50 - 58mm lenses + accessory pentaprism by Zeiss.
Mirror details :	rectangular:rear edge pivot:returned to viewing position by winding-on.
Exposures / Format :	36exp./ 24x36mm.
Body dims(WxHxD)/Wt. :	150x95x50mm / 675gm
U.S.price 1950 :	\$200
Additional info. :	Zeiss pentaprism available from '49,but viewed image reduced.(illus.above left)
Comment :	an interim model between Kine and Varex



Illustration not available  
for use in this impression





## Neucaflex

Production commenced :	1949
Production period :	no information
Quantity produced :	fewer than 500
Serial number range :	no information
Finish :	chrome plate with black leather panels
Variants :	VI= shutter 1/25th.-1/1000th. V2= shutter 1sec. - 1/1000th.
Country of origin :	East Germany
Manufacturer :	Franz Robert Neubert, Jena
Principal Designer :	no information
Noteworthy features :	focussing by periscope ( automatically lowered by winding - on) which samples a small (magnified) area at the centre of the image.
Lens mount :	screw - no details
Body mount :	screw - no details
Flange to film plane :	no information
Shutter type /travel :	focal plane (cloth blinds)/ horizontal
Shutter speed range :	see above
Flash synch. / D.A. :	no information
Types of viewfinder :	Part-image focussing via periscope and an integral optical finder for the 5cm lenses
Mirror details :	size approx. 15mmx15mm
Exposures / Format :	36exp. / 36x24mm.
Body dims(WxHxD)/Wt. :	no information
Price 1949 :	no information
Illustrations :	courtesy H.D.Abring

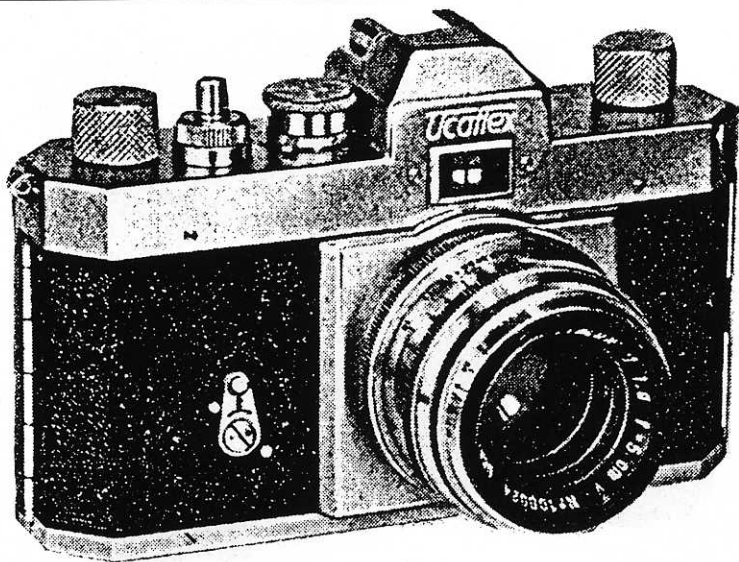
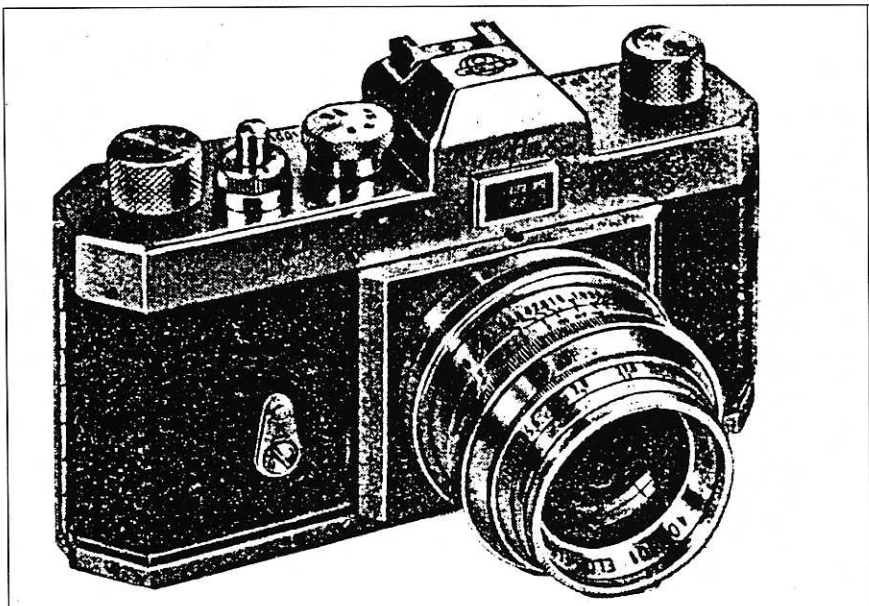


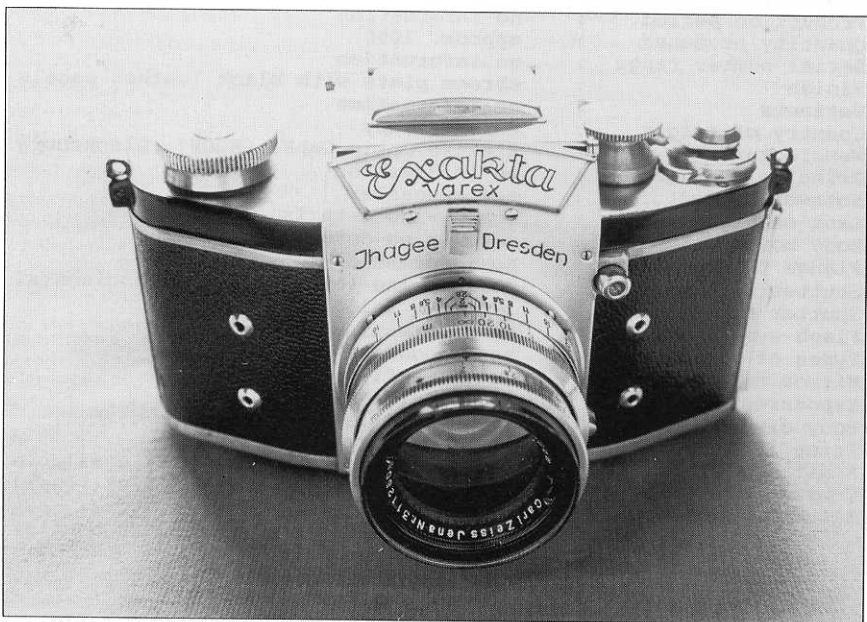
Illustration not available  
for use in this impression





## Uniflex / Ucaflex / Elcafex

Production commenced :	1950
Production period :	no information
Quantity produced :	approx. 1000
Serial number range :	no information
Finish :	chrome plate with black leather panels
Variants :	no information
Country of origin :	West Germany
Manufacturer :	Elektro Optic GmbH. (ELOP) ,Glucksburg
Principal Designer :	no information
Noteworthy features :	see Neucaflex
Lens mount :	screw - no details
Body mount :	screw - no details
Flange to film plane :	no information
Shutter type /travel :	focal plane (cloth blinds)/ horizontal
Shutter speed range :	1/25th.- 1/1000th.sec.
Flash synch. / D.A. :	no information
Types of viewfinder :	see Neucaflex
Mirror details :	see Neucaflex
Exposures / Format :	36exp. / 36x24mm.
Body dims(WxHxD)/Wt. :	no information
Price 1950 :	600DM
Additional info. :	several standard lenses were available
Comment :	remarkably similar to Neucaflex (P.43)
Illustrations :	photo-copies are from contemporary ads - above Uniflex and above left Ucaflex





## Exakta Varex / Exakta V (USA)

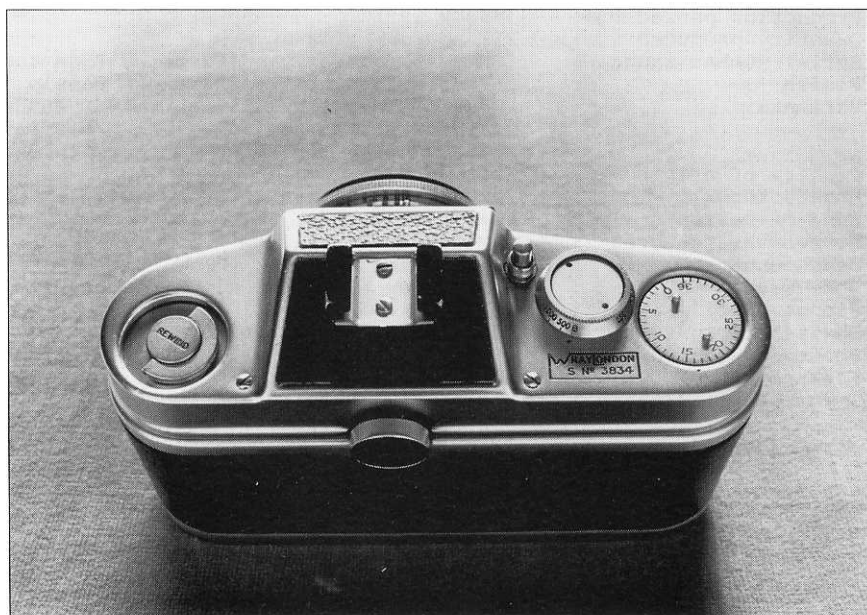
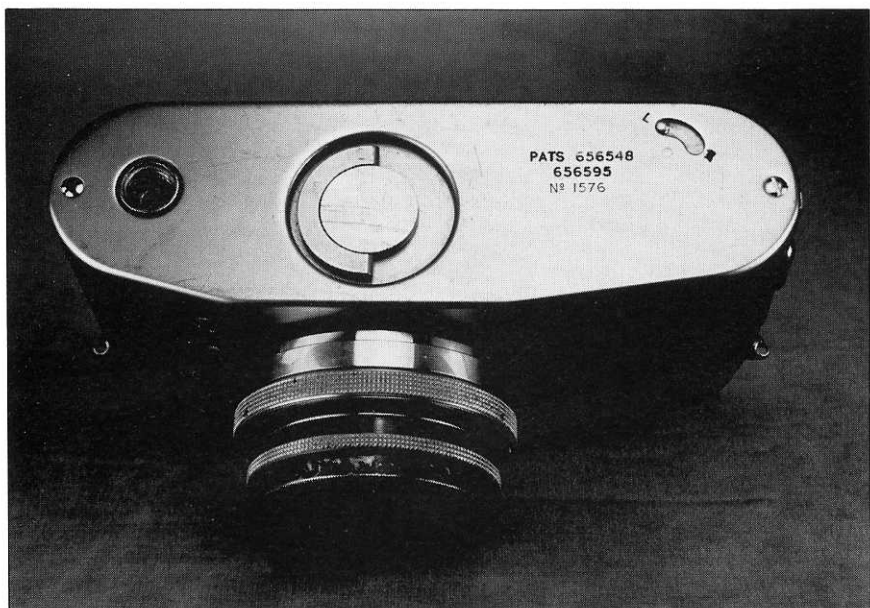
Production commenced :	1950
Production period :	1950 - 1951
Quantity produced :	V1 = 17K approx. V2 = 7K approx.
Serial number notes :	V1 = 667K - 683K V2 = 683K - 690K
Finish :	chrome/black paint/black leather panels
Variants :	V1= removable film aperture plate V2= film aperture plate part of casting
Country of origin :	East Germany
Manufacturer :	Ihagee (Steenbergen family), Dresden
Original Design :	Karl Nuchterlein
Noteworthy features :	First 35mmSLR to have interchangeability of pentaprism and W/L viewfinders.
Lens mount :	three lug bayonet, unsprung
Body mount :	sprung, 37.5mm throat (no dia. coupling)
Flange to film plane :	45mm
Shutter type /travel :	focal plane (cloth blinds) / horizontal
Shutter speed range :	1/2secs.- 1/1000th.sec. (dials rotate)
Flash synch. / D.A. :	yes / yes (variable)
Types of viewfinders :	Whole image viewing and focussing using interchangeable WLF and pentaprism.
Mirror details :	Rectangular: rear edge pivot : returned to viewing position by winding-on.
Exposures / Format :	36exp./ 36x24mm.
Body dims(WxHxD)/Wt. :	150x95x50mm / 700gm.(measured with WLF)
U.S.price 1950 :	\$350 with WLF and f1.9 Xenon (semi-auto function using a double cable release).
Additional info. :	'Varex' was not available for use in USA With pentaprism viewfinder fitted there is no shutter lock facility.





## Praktica

Production commenced :	1950
Production period :	1950 - 1951
Quantity produced :	25K approx.
Serial number range :	20K - 45K approx. (V2 noted from 30K)
Finish :	chrome with black leathercloth panels
Variants :	V1=side strap lugs (ill.above S/N 20906)
	V2=front strap lugs(ill. left S/N 35469)
	V3=as V2 with its synch contacts in base
Country of origin :	East Germany
Manufacturer :	Kamera Werkstätten (Niedersedlitz)
Head of Design :	Siegfried Böhm
Noteworthy features :	similar to Praktiflex
Lens mount :	42mm screw
Body mount :	42mm screw (no diaphragm coupling)
Flange to film plane :	45.5mm
Shutter type /travel :	focal plane (cloth blinds) / horizontal
Shutter speed range :	1/2 - 1/500th.sec. (dial rotates)
Flash synch. / D.A. :	no / no (but see below)
Types of viewfinders :	Whole image viewing and focussing (rev.) via WLF+mag..Direct frame for std.lenses
Mirror details :	Trapezoidal:underset pivot points:and is returned to viewing pos'n. by winding-on
Exposures / Format :	36exp. / 36x24mm
Body dims.(WxHxD)/Wt.:	150x80x50mm / 625gm. (640gm with D/A)
U.S.price 1950 :	\$145
Additional info. :	Zeiss accessory prism avail. from C.1950 also D/A and/or interchangeable p'prism / W/L viewfinders and synchr. available as factory modifications - see illus. left.







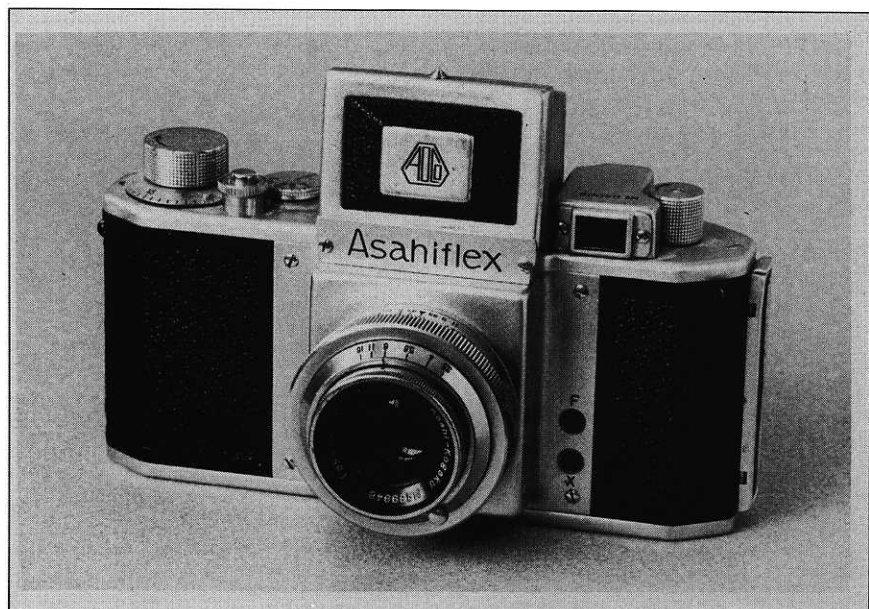
## Wrayflex

Production commenced :	1950
Production period :	V1= 1950-59 : V2= 1954-59 : V3=1959-63
Quantity produced :	V1= 750 V2= 1700 V3= 300
Serial number range :	1500 - 4300
Finish :	chrome plate with black leather panels
Variants :	V1=32x24mm with upright reversed image
	V2=36x24mm with upright reversed image
	V3=36x24mm with pentaprism RWR viewing
Country of origin :	Great Britain
Manufacturer :	Wray Optical Co.Ltd.
Principal Designer :	Cmdr.M.E.P.Studdert
Noteworthy features :	wind-on by key in centre of base
Lens mount :	41mm screw
Body mount :	41mm screw (no diaphragm coupling)
Flange to film plane :	42mm
Shutter type /travel :	focal plane(cloth blinds) / horizontal
Shutter speed range :	1/2sec.- 1/1000th.sec. (inactive dial)
Flash synch./ D.A. :	yes / no
Type of viewfinder :	V1/V2 have upright but reversed whole image viewing and focussing via reflex and viewing mirrors, but..image is dim!
Mirror details :	V1/V2 have a mirror / screen assembly pivoted around front edge of screen
Exposures / Format :	V1=42exp.32x24mm ; V2/V3=36exp.36x24mm
Body dims(WxHxD)/Wt. :	V1/V2=140x85x47mm / 650gm.
	V3=140x100x47mm / 675gm.
G.B.price 1950 :	£68.00 with f/2 Unilite
Additional info. :	V1 / V2 and were produced concurrently for a period from 1954



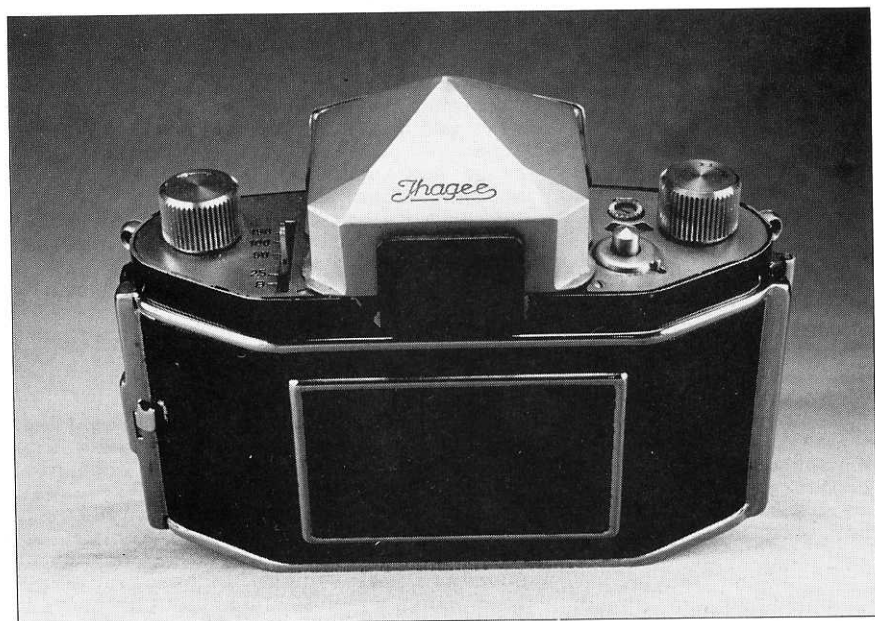
Illustration not available  
for use in this impression

Illustration not available  
for use in this impression



## Asahiflex I

Production commenced :	1951 (November)
Production period :	1951-1953 = V1 / 1953-1954 = V2
Quantity produced :	no information
Serial number range :	insufficient information
Finish :	chrome plate with black leather panels
Variants :	V1 = one flash synch. socket, 1/20th.sec. V2 = two flash synch sockets, 1/25th.sec.
Country of origin :	Japan
Manufacturer :	Asahi Kogaku Goshi
Principal Designer :	Nobuyuki Yoshida
Noteworthy features :	Mirror movement initiated and controlled by operation of the shutter release.
Lens mount :	37mm.screw
Body mount :	37mm.screw (no diaphragm coupling)
Flange to film plane :	45.5mm
Shutter type /travel :	focal plane (cloth blinds) / horizontal
Shutter speed range :	V1:1/20-1/500th. V2:1/25-1/500th. (dial rotates)
Flash synch. / D.A. :	yes / no
Types of viewfinders :	Whole image viewing and focussing (rev.) via WLF.Optical finder for 50/58mm lens. trapezoidal shape with a rear edge pivot
Mirror details :	36exp. / 36x24mm
Exposures / Format :	140x75x50mm / 500gm.(Model II/V2)
Body dims(WxHxD)/Wt. :	Lens and body S/Nos run closely together until approx. 50K when lenses other than 50/58mm were produced in quantity.First lens(apart from 50/58mm)was the 100/f3.5
Additional info. :	Asahiflex II / V1 courtesy Ian Platt
Illustration :	





## Exa

Production commenced :	1951
Production period :	1951 - 1963
Quantity produced :	See appendix 4
Serial number notes :	See appendix 4
Finish :	See appendix 4
Variants :	See appendix 4
Country of origin :	E.Germany
Manufacturer :	Ihagee (Steenbergen family), Dresden
Original Design :	W.Teubner
Noteworthy features :	unusual but compact body shape
Lens mount :	standard Exakta bayonet
Body mount :	sprung, throat dia.37.5mm (no diaphragm coupling)
Flange to film plane :	45mm
Shutter type /travel :	sector / vertical
Shutter speed range :	1/25th.sec.- 1/150th.sec. (except for first few hundred) lever-set.
Flash synch. / D.A. :	yes / no
Types of viewfinders :	Whole image reflex viewing and focussing using interchangeable (Exakta) v/finders.
Mirror details :	rectangular : integral with shutter
Exposures / Format :	36exp. / 36x24mm
Body dims(WxHxD)/Wt. :	130x90x50mm / 625g. (with WLF)
U.S.price 1952 :	\$100 with Meritar, \$120 with Tessar
Additional info. :	First few hundred had 1/250th.speed.
	Sector shutter could cause 'vignetting' when long focus lenses were used.
Illustrations :	camera illustrated above is S/N 206063

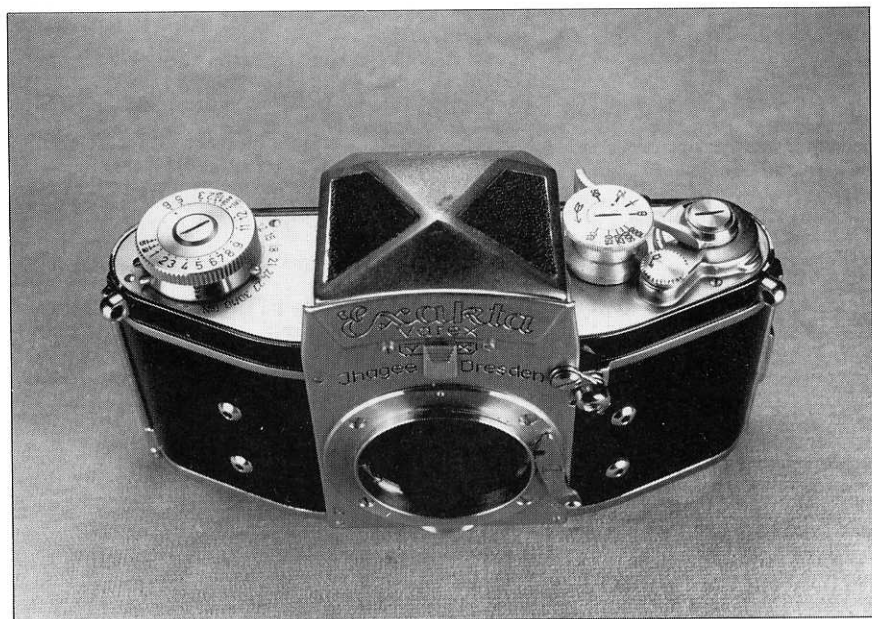




## Zenith / Zenith C

Production commenced :	1951
Production period :	1951 - 1962
Quantity produced :	considerable
Serial number notes :	First two digits of lens and body S/Nos indicate the year of manufacture.
Finish :	chrome plate with black leather panels
Variants :	no information
Country of origin :	USSR
Manufacturer :	K.M.Z. (Krasnagorsk)
Principal Designer :	no information
Noteworthy features :	compact and well made
Lens mount :	39mm thread
Body mount :	39mm.thread (no diaphragm coupling)
Flange to film plane :	45mm.
Shutter type /travel :	focal plane (cloth blinds) / horizontal
Shutter speed range :	1/5th.- 1/500th.sec. (dial rotates)
Flash synch. / D.A. :	early = no / no : later = yes / no
Type of viewfinder :	Whole image viewing and focussing (RWR) via integral pentaprism.
Mirror details :	Rectangular: rear edge pivot : returned to viewing position by winding-on.
Exposures / Format :	36exp. / 36x24mm.
Body dims(WxHxD)/Wt. :	135x90x50mm / 500gm.
Price :	no information
Additional info. :	film is loaded from the base
Comment :	A compact design which is, in effect, a Fed/Zorki with reflex focussing.
Illustrations :	ill. on this page courtesy S.Sztromajer



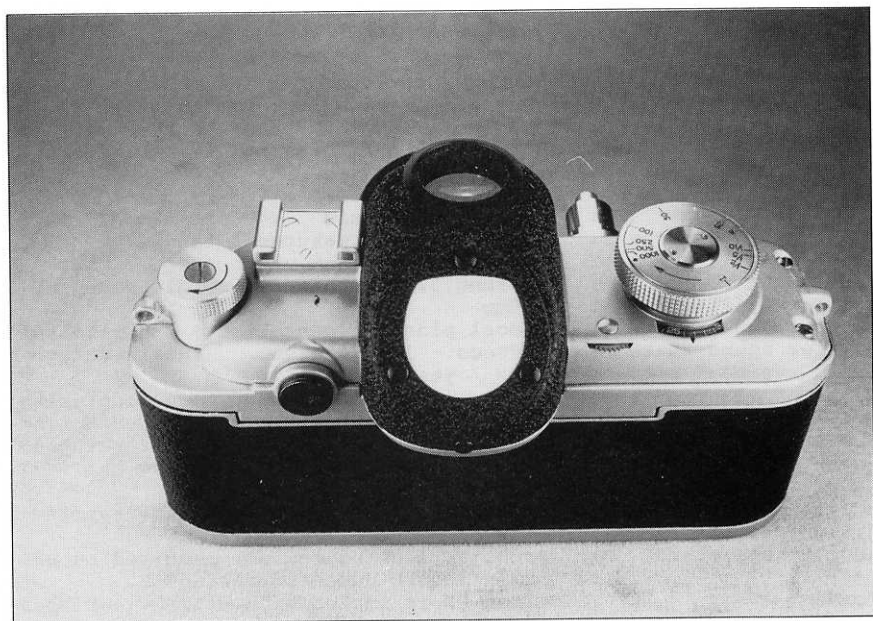
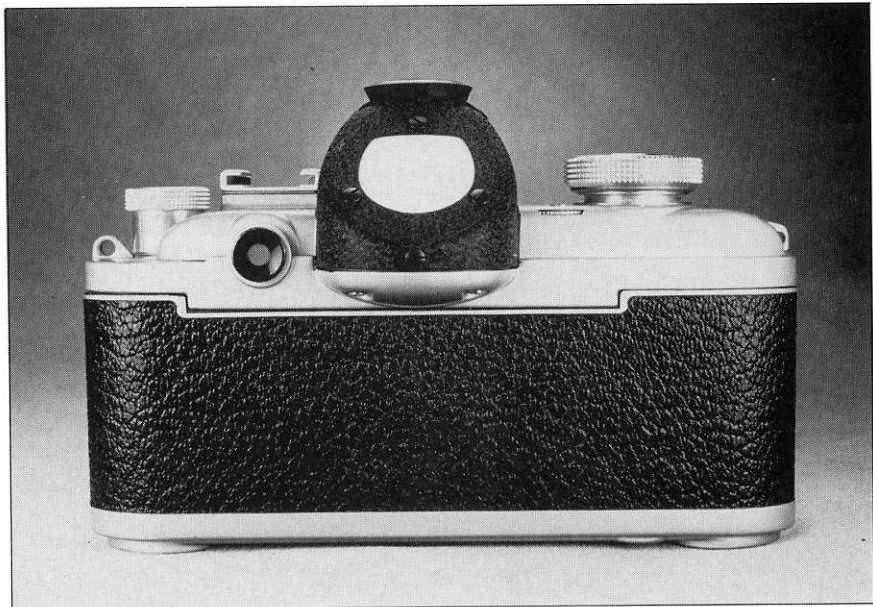






## Exakta Varex VX / Exakta VX (USA)

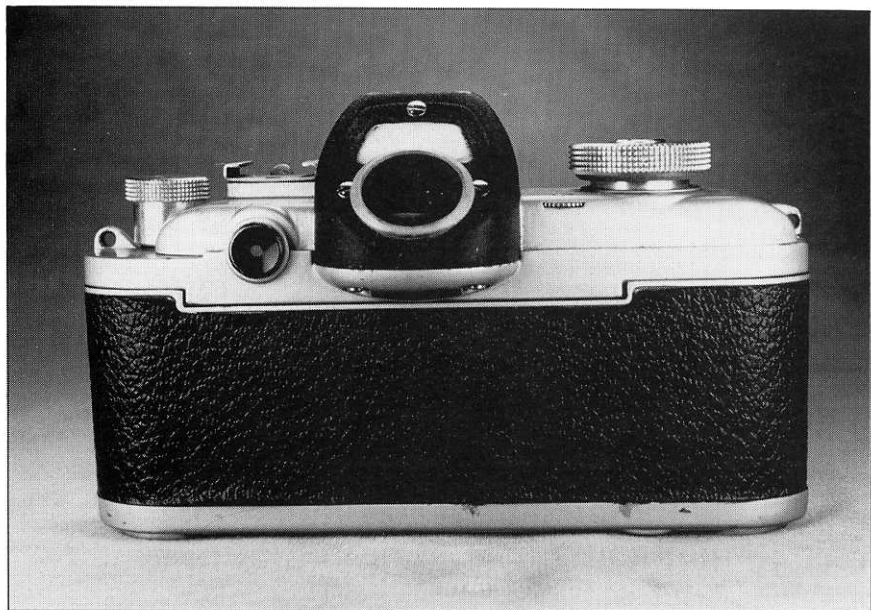
Production commenced :	1951
Production period :	1951 - 1957
Quantity produced :	V1 = 40K approx. V2 = 80K approx.
Serial number ranges :	V1 = 691K - 733K V2 = 734K - 817K
Finish :	chrome/black paint/black leather panels
Variants :	V1= hinged back (removable)
	V2='gear-set' exposure counter- plus an additional external lens bayonet
Country of origin :	East Germany
Manufacturer :	Ihagee (Steenbergen family), Dresden
Original Design :	Karl Nuchterlein
Noteworthy features :	most 'Varex' features retained
Lens mount :	three lug bayonet, unsprung
Body mount :	sprung, 37.5mm throat (no dia. coupling)
Flange to film plane :	45mm
Shutter type / travel :	focal plane (cloth blinds) / horizontal
Shutter speed range :	12secs.- 1/1000th. sec. (dials rotate)
Flash synch. / D.A. :	yes / yes (variable)
Types of viewfinders :	Whole image viewing and focussing using either interchangeable WLF or pentaprism
Mirror details :	Rectangular: rear edge pivot : returned to viewing position by winding-on.
Exposures / Format :	36exp. / 36x24mm
Body dims(W/H/D)/Wt. :	150x100x50mm / 725gm. (with pentaprism)
U.S. price 1953 :	\$400 with 58/2 Biotar
Additional info. :	shutter locking rod not required on W/L viewfinders made for variant 2.
Comment :	When VI is fitted with prism viewfinder there is no shutter lock facility.





## Alpha 4

Production commenced :	1952
Production period :	1952 - 1958
Quantity produced :	350 approx.
Serial number range :	30K - 43K
Finish :	grey / black (artificial fabric) panels
Variants :	some conversions to other models
Country of origin :	Switzerland
Manufacturer :	Pignons SA (Bourgeois family)
Principal Designer :	Jacques Bogopolsky (aka Bolsky/Bolsey)
Noteworthy features :	Image viewed vertically via magnifier. Mirror actuated and controlled by the shutter release- as Alpha Reflex et al.
Lens mount :	bayonet with three sprung lugs
Body mount :	48mm. throat (no diaphragm coupling)
Flange to film plane :	37.5mm
Shutter type / travel :	focal plane (cloth blinds) / horizontal
Shutter speed range :	1sec. - 1/1000th. sec. (dial rotates)
Flash synch. / D.A. :	yes / no
Type of viewfinder :	Whole image viewing and focussing (rev) via fixed magnifier.
Mirror details :	Rectangular- on unique pivoting system which moves it upwards and rearwards - and, when a collapsible lens is mounted and retracted, downwards and rearwards!
Exposures / Format :	36exp. / 36x24mm
Body dims (WxHxD) / Wt. :	150x95x42mm (body) 58mm (V/F) / 575gm.
Price 1952 :	no information
Additional info. :	Pignons could convert Alpha 4 to Alpha 5 or even to other models!

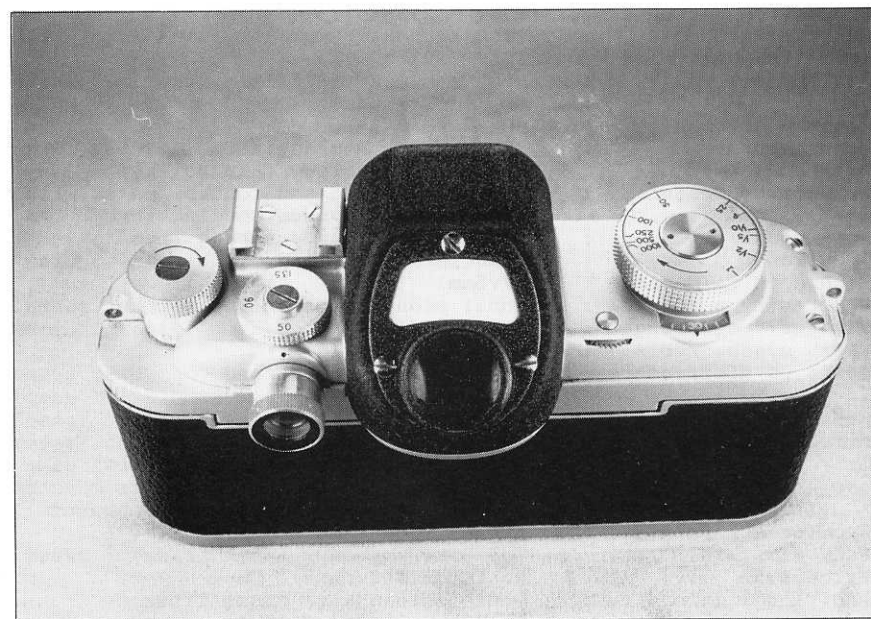
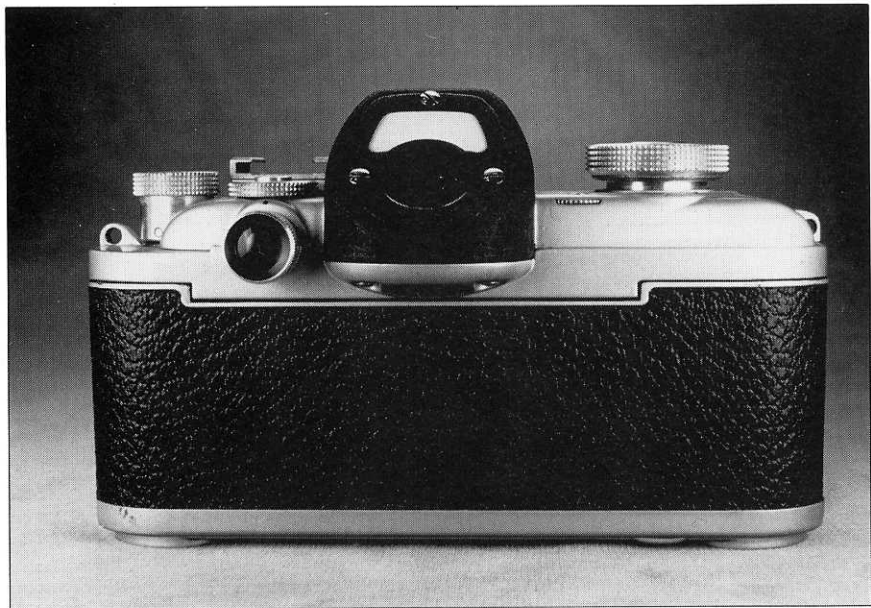




## Alpa 5

Production commenced :	1952
Production period :	1952 - 1958
Quantity produced :	2200 approx.
Serial number range :	30K - 39K
Finish :	grey / black (artificial fabric) panels
Variants :	no information
Country of origin :	Switzerland
Manufacturer :	Pignons SA (Bourgeois family)
Principal Designer :	Jacques Bogópsky (aka Bolsky/ Bolsey)
Noteworthy features :	Mirror actuated and controlled as with Alpa 4 and previous models.
Lens mount :	bayonet with three sprung lugs
Body mount :	48mm.throat (no diaphragm coupling)
Flange to film plane :	37.5mm
Shutter type /travel :	focal plane (cloth blinds) / horizontal
Shutter speed range :	1sec. - 1/1000th.sec. (dial rotates)
Flash synch. / D.A. :	yes / no
Types of viewfinders :	Whole image viewing and focussing using pentaprism (image is viewed at 45 deg.) plus optical finder for standard lenses
Mirror details :	Rectangular with unique pivoting system which moves it upwards and rearwards - and, when a collapsible lens is mounted and retracted, downwards and rearwards!!
Exposures / Format :	36exp. / 36x24mm
Body dims(WxHxD)/Wt. :	150x90x42mm(body) (60mm prism) / 575gm.
Price 1952 :	no information
Additional info. :	plain screen with cross lines
Comment :	A very well made and impressive camera.







## Alpha 7

Production commenced :	1952
Production period :	1952 - 1958
Quantity produced :	3800 approx.
Serial number range :	30K - 39K
Finish :	grey / black (artificial fabric) panels
Variants :	no information
Country of origin :	Switzerland
Manufacturer :	Pignons SA (Bourgeois family)
Principal Designer :	Jacques Bogopolsky (aka Bolsky/ Bolsey)
Noteworthy features :	First 35mm SLR to have integral p'prism optical viewfinder adjustable for three focal lengths and rangefinder focussing (R/F only available at the 5cm setting)
Lens mount :	bayonet with three sprung lugs
Body mount :	48mm throat (no diaphragm coupling)
Flange to film plane :	37.5mm
Shutter type /travel :	focal plane (cloth blinds) / horizontal
Shutter speed range :	1sec.- 1/1000th.sec. (dial rotates)
Flash synch. / D.A. :	yes / no
Types of viewfinders :	Whole image viewing and focussing via pentaprism (image is viewed at 45 deg.) plus V/F adjustable for 50/90/135mm.
Mirror details :	Rectangular; on a unique pivoting system which moves it upwards and rearwards - and, when a collapsible lens is mounted and retracted, downwards and rearwards!!
Exposures / Format :	36exp. / 36x24mm
Body dims(WxHxD)/Wt. :	150x90x42mm(body) (60mm prism) / 650gm.
G.B.price 1955 :	£225 with f2/50 Xenon







## Periflex

Production commenced :	1952 (Sept.)
Production period :	1952 - 1957
Quantity produced :	VI=200(other variants prod.in quantity)
Serial number notes :	insufficient information
Finishes :	see below
Variants :	VI=pigskin covering (1952)
	V2=black leathercloth covering (1952-3)
	V3=as V2 but speeds on a bezel (1953-5)
	V4=as V3 but chromed top/bottom(1955-7)
Country of origin :	Gt.Britain
Manufacturer :	K.G.Corfield
Principal Designers :	John and Kenneth Corfield
Noteworthy features :	Reflex focussing only: manually lowered periscope samples a small area at lower mid-edge of the image at 8X mag.
Lens mount :	39mm. screw
Body mount :	39mm. screw (no diaphragm coupling)
Flange to film plane :	29mm.
Shutter type /travel :	focal plane (cloth blinds) / horizontal
Shutter speed range :	1/30th.- 1/1000th.sec. (dial is rotated to tension shutter and rotates on rise)
Flash synch. / D.A. :	yes / no
Types of viewfinders :	interchangeable optical viewfinders
Mirror details :	approx. 1 sq.cm. in area
Exposures / Format :	36exp. / 36x24mm.
Body dims(WxHxD)/Wt. :	135x85x40mm / 425gm (measured with V/F)
G.B.price 1953 :	£30 with f3.5/50 (uncoated)
Additional info. :	Would accept any 39mm fitting lens and give focus register.



**VEB PENTACON DRESDEN**

Kamera- und Kinowerke  
Betrieb des Kombines  
VEB Carl Zeiss JENA

Schandauer Straße 76  
Dresden  
DDR-8021

Ihre Zeichen      Ihre Nachricht vom

Fernsprech-Durchwahl  
346.2108

Unsere Zeichen

VKKÖ-Ni/Ba 16. 3. 90

Datum

PA/VK 174 /90

Dear Sir,

With reference to your inquiry regarding Praktina we inform you, that about 10.000 cameras of this type were manufactured between 1952 and 1953.

Following models were the

Praktina FX between 1953 and 1958 with 67.000 numbers  
and Praktina II a between 1958 and 1960 with 25.000 numbers.

We hope you will at last be able to secure one of this cameras for your collection.

With best regards

Yours sincerely

Nickold  
General Manager  
Service Division

Fernsprech-Auskunft  
Dresden 3460

Fernschreiber  
2261

Bank  
Staatsbank der DDR,  
Konto-Nr. 4471-10-0000/0

Postcheck  
Dresden  
5988

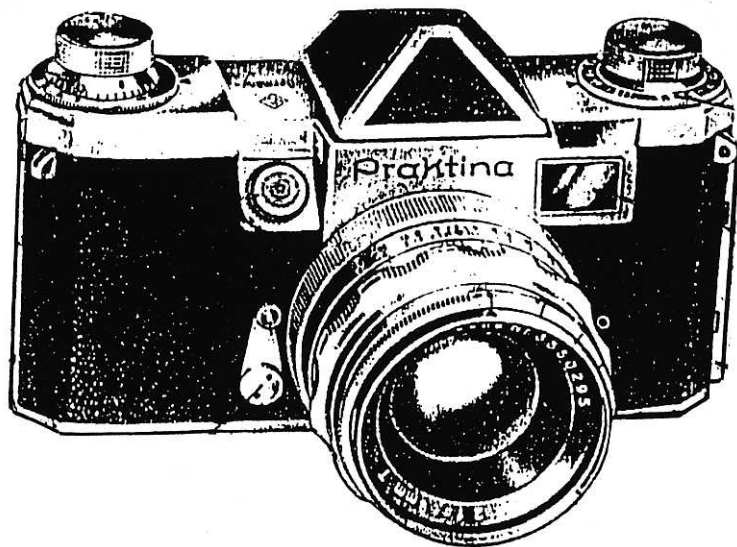
Bahnstationen  
Waggonladungen Dresden-Reick  
Stückgut Dresden-Neustadt  
Erspreßgut Dresden-Hbf.

Warenannahme  
Jungbansstr. 1-3

Betriebs-Nr.  
00184928

Postschleifblatt 69

V 81 201 III-9.4 It/G 413/88 243



## Praktina

Production commenced :	1952
Production period :	1952 - 1953
Quantity produced :	10K approx.
Serial number range :	no information
Finish :	chrome plate with black leather panels
Variants :	no information
Country of origin :	East Germany
Manufacturer :	Kamera Werkstaten (Niedersedlitz)
Head of Design :	Siegfried Bohm
Noteworthy features :	Constructed to accept spring winder or electric motor drive w/out adaptation or adjustment. May also have internally actuated diaphragm coupling.
Lens mount :	Non- rotating three lug bayonet with a locating pin at the 12 o'clock pos'on.
Body mount :	Screw down locking collar cut away for lugs on the lens mount. (46mm throat)
Flange to film plane :	50mm
Shutter type /travel :	focal plane(cloth blinds) / horizontal
Shutter speed range :	1sec.- 1/1000th.sec. (inactive dial)
Flash synch. / D.A. :	yes / yes
Types of viewfinders :	Whole image viewing and focussing with interchangeable WLF and pentaprism.
Mirror details :	Rectangular:rear edge pivot : returned to viewing position by winding-on.
Exposures / Format :	36exp. / 36x24mm.
Body dims(WxHxD)/Wt. :	145x95x60mm / 650gm.
Additional info. :	It has proved impossible to locate an example of this camera.

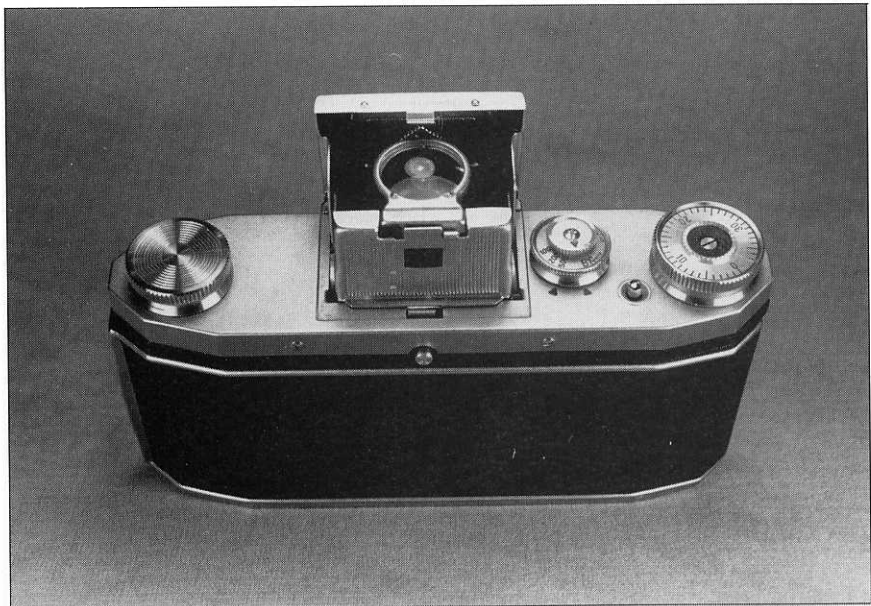




## Contax D / Pentacon / Consol

Production commenced :	1952
Production period :	1952 - 1956
Quantity produced :	no information
Serial number notes :	no information
Finish :	chrome plate with black leather panels
Variants :	Name changes only with re-naming cover plates fitted by some US importers.
Country of origin :	East Germany
Manufacturer :	Zeiss Ikon (Dresden)
Head of Design :	W.Winzenburg
Noteworthy features :	very compact design with pentaprism VF
Lens mount :	42mm.screw
Body mount :	42mm.screw (no diaphragm coupling)
Flange to film plane :	45.5mm
Shutter type /travel :	focal plane(cloth blinds) / horizontal
Shutter speed range :	1sec.- 1/1000th.sec. (dial rotates)
Flash synch. / D.A. :	yes (socket on top plate) / yes
Type of viewfinder :	whole image viewing and focussing with integral pentaprism.
Mirror details :	rectangular: rear edge pivot :returned to viewing position by winding-on.
Exposures / Format :	36exp. / 36x24mm.
Body dims(WxHxD)/Wt. :	150x85x50mm. / 575gm.
Price 1953 :	no information
Additional info. :	It is possible that early examples may also have synch. socket as Contax S/C.
Comment :	It is important to establish,as far as possible,that the relationship between the S/N and escutcheon is appropriate.









## Praktica FX / Praktiflex FX (USA)

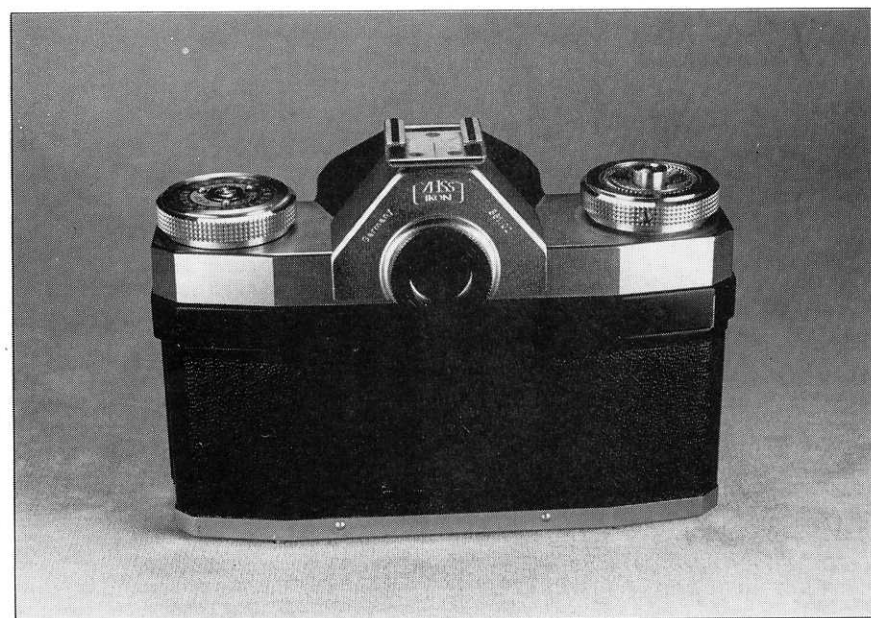
Production commenced :	1952
Production period :	1952 - 1955
Quantity produced :	150K approx.
Serial number range :	C45K - C190K
Finish :	chrome with black leathercloth panels
Variants :	V1 = 3 flash synch. sockets on the base
:	V2 = 3 flash synch. sockets front right
:	V3 = 2 flash synch. sockets front right
:	V4 = 1 flash synch. socket front right
Country of origin :	East Germany
Manufacturer :	Kamera Werkstätten
Principal Designer :	Siegfried Böhm
Noteworthy features :	similar to Praktiflex
Lens mount :	42mm screw
Body mount :	42mm screw (no diaphragm coupling)
Flange to film plane :	45.5mm
Shutter type / travel :	focal plane (cloth blinds) / horizontal
Shutter speed range :	1/2sec. - 1/500th. sec. (dial rotates)
Flash synch. / D.A. :	see above and below
Types of viewfinders :	Whole image viewing and focussing (rev) via WLF+mag. Direct frame and see below
Mirror details :	as Praktica
Exposures / Format :	36exp. / 36x24mm.
Body dims (WxHxD) / Wt. :	150x80x50mm / 625gm. (640gm with D/A)
Price 1952 :	no information
Additional info. :	As Praktica but made with flash synch. Acc. pentaprism as Praktica. D/A and/or interch. finders avail. as factory mods.
Comment :	well made and popular





## Rectaflex Junior

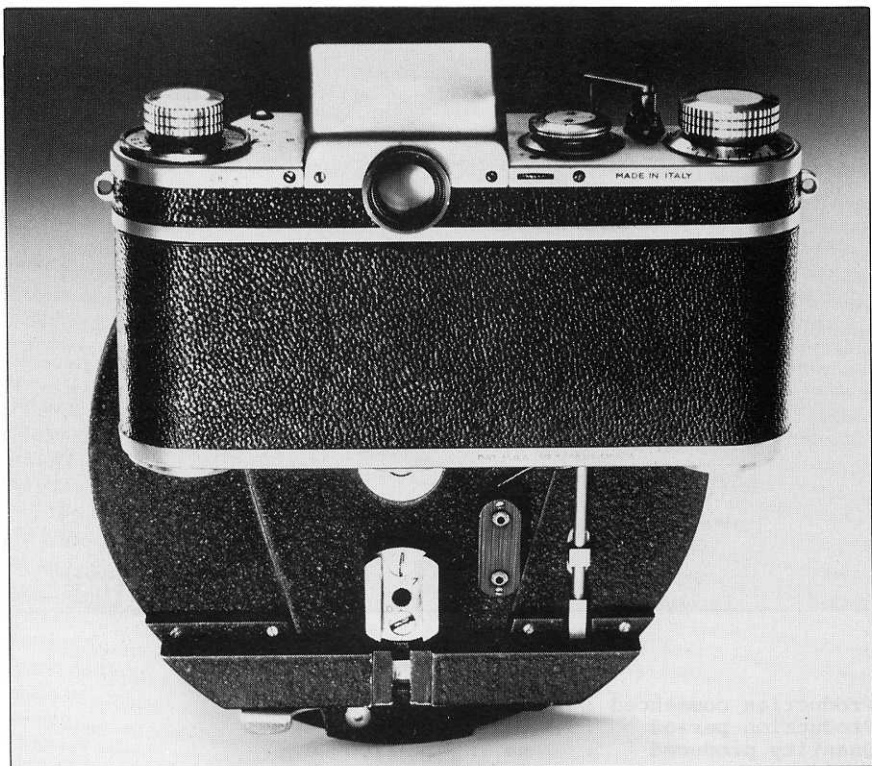
Production commenced :	1952
Production period :	1952
Quantity produced :	1000 approx.
Serial number range :	insufficient information
Finish :	chrome plate with black leather panels
Variants :	no information
Country of origin :	Italy
Manufacturer :	Rectaflex S.p.a.
Original Design :	Sig.Assenza
Noteworthy features :	Mirror m' ment actuated and controlled using the shutter release- as with the Praktiflex I et al.
Lens mount :	bayonet with three sprung lugs
Body mount :	47.5mm throat (no diaphragm coupling)
Flange to film plane :	43.5mm
Shutter type /travel :	focal plane(cloth blinds) / horizontal
Shutter speed range :	1/25th.- 1/500th.sec. (dial rotates)
Flash synch. / D.A. :	yes / no
Type of viewfinder :	Whole image viewing and focussing with integral pentaprism.
Mirror details :	rectangular with rear edge pivot
Exposures / Format :	36exp. / 36x24mm.
Body dims(WxHxD)/Wt. :	155x90x50mm / 650gm.
Price :	no information
Additional info. :	Apparently a model made to utilise shutter assemblies having limited function.
Comment :	similar to Rectaflex variant 1



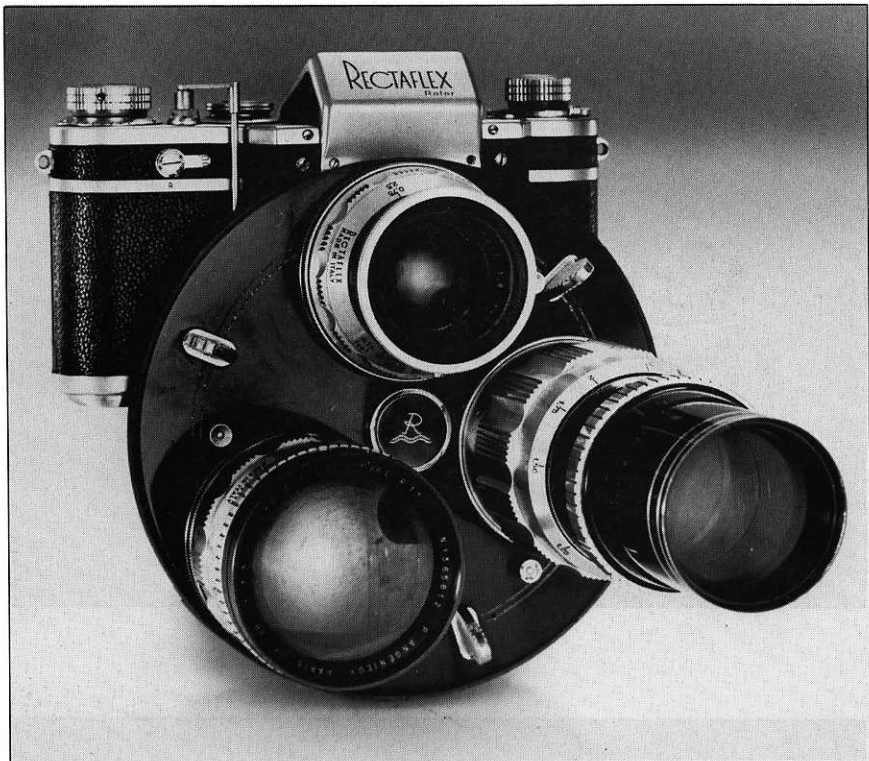


## Contaflex I

Production commenced	:	1953
Production period	:	1953 - 1957
Quantity produced	:	no information
Serial number notes	:	no information
Finish	:	chrome plate with black leather panels
Variants	:	no information
Country of origin	:	West Germany
Manufacturer	:	Zeiss Ikon, Stuttgart
Principal Designer	:	no information
Noteworthy features	:	well made but significantly limited by having a fixed lens.
Lens mount	:	fixed lens
Body mount	:	Accessory bracket to hold in place the 1.7X tele- converter, 0.7X wide - angle converter, microscope adaptor or stereo attachments.
Flange to film plane	:	not relevant
Shutter type /travel	:	between the lens leaf shutter
Shutter speed range	:	1sec.- 1/500th.sec. (rim-set)
Flash synch. / D.A.	:	yes / yes
Type of viewfinder	:	Whole image viewing and focussing with integral pentaprism.
Mirror details	:	rectangular with rear edge pivot-reset by winding-on.
Exposures / Format	:	36exp. / 36x24mm.
Body dims(WxHxD)/Wt.	:	125x90x65mm. / 650gm.
G.B.price 1954	:	£78.00
Illustrations	:	example illustrated is S/N E36340







## Rectaflex Rotor

Production commenced :	1953
Production period :	1953 - 1955
Quantity produced :	300 approx.
Serial number notes :	no information
Finish :	chrome plate with black leather panels
Country of origin :	Italy
Manufacturer :	as Rectaflex
Original Design :	as Rectaflex
Noteworthy features :	as variant 4- plus obvious attributes!
Lens mount :	bayonet with three sprung lugs
Body mount :	circular plate with three mounts : but no diaphragm coupling
Flange to film plane :	43.5mm
Shutter type /travel :	focal plane(cloth blinds) / horizontal
Shutter speed range :	1sec-1/1300th.(fast spds dial rotates)
Flash synch. / D.A. :	yes / no
Type of viewfinder :	as Rectaflex
Mirror details :	rectangular with rear edge pivot
Exposures / Format :	36exp. / 36x24mm.
Body dims(WxHxD)/Wt. :	as Rectaflex (Rotor dia.145mm)/1150gm.
U.S. Price 1953 :	\$600 with 50/1.8 lens
Additional info. :	First 35mm.camera with turret facility

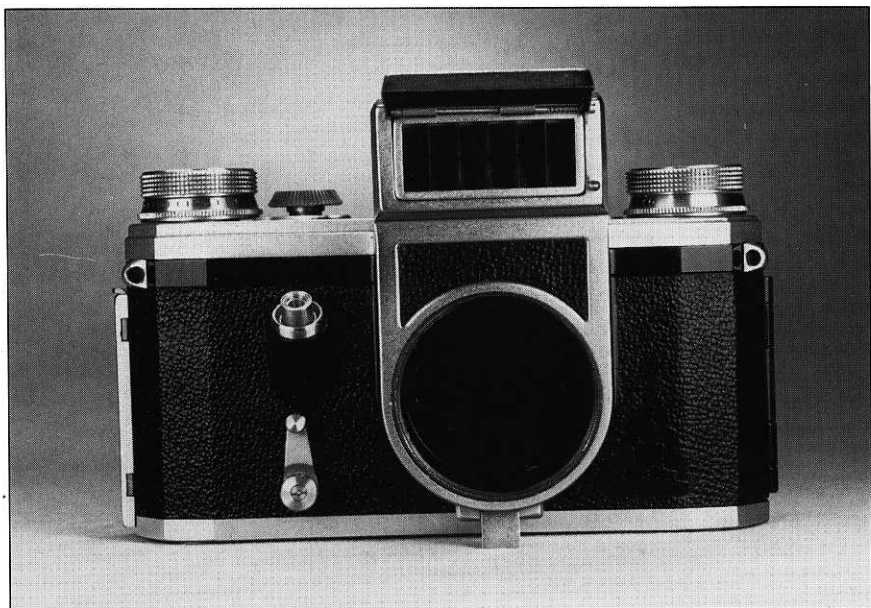




## Praktina FX

Production commenced :	1953
Production period :	1953 - 1958
Quantity produced :	68K approx.
Serial number notes :	no information
Finish :	chrome plate with black leather panels
Variants :	no information
Country of origin :	East Germany
Manufacturer :	Kamera Werkstatt (Niedersedlitz)
Head of Design :	Siegfried Bohm
Noteworthy features :	First mass - produced 35mm SLR to have internal coupling for lens diaphragm. Constructed to accept spring winder or electric motor drive w/out adaptation or adjustment, and, when fitted on these to accept the 250 exposure film back.
Lens mount :	as Praktina
Body mount :	as Praktina
Flange to film plane :	50mm
Shutter type / travel :	focal plane (cloth blinds) / horizontal
Shutter speed range :	1sec. - 1/1000th. sec. (inactive dial)
Flash synch. / D.A. :	yes / yes
Types of viewfinders :	Whole image viewing and focussing with interchangeable WLF / pentaprism / prism with meter / critical magnifier.
Mirror details :	as Praktina
Exposures / Format :	36exp. / 36x24mm.
Body dims (WxHxD) / Wt. :	145x95x60mm / 675gm. (with late prism)
Price :	no information
Comment :	This was the 'system' camera of the '50s.

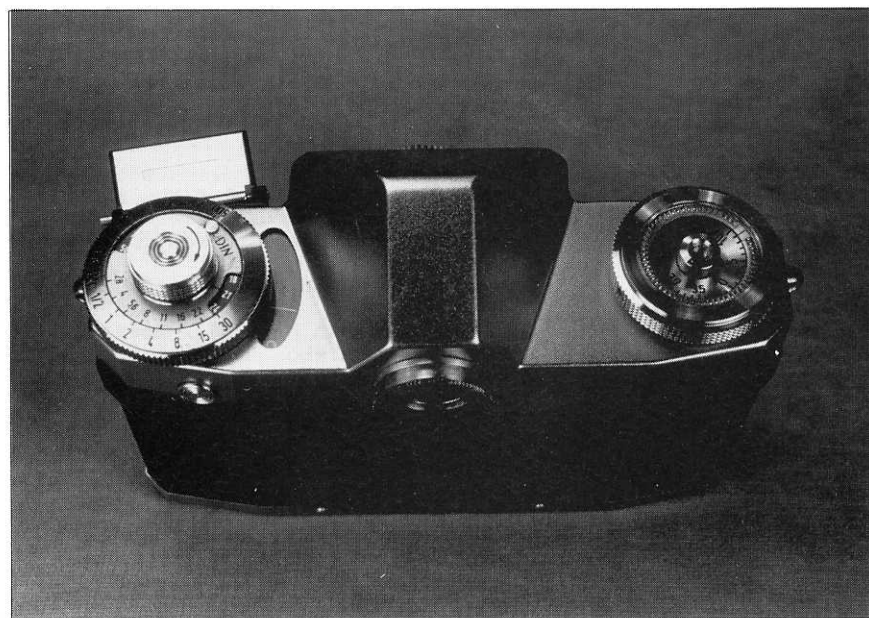




## Contax E

Production commenced :	1953
Production period :	1953 - 1956
Quantity produced :	no information
Serial number notes :	no information
Finish :	chrome plate with black leather panels
Variants :	no information
Country of origin :	East Germany
Manufacturer :	Zeiss Ikon (Dresden)
Head of Design :	W.Winzenburg
Noteworthy features :	First 35mmSLR with focal plane shutter to have integral exposure meter.Note - meter not coupled to cameras controls.
Lens mount :	42mm.screw
Body mount :	42mm.screw (no diaphragm coupling)
Flange to film plane :	45.5mm
Shutter type /travel :	focal plane(cloth blinds) / horizontal
Shutter speed range :	1sec.- 1/1000th.sec. (dial rotates)
Flash synch. / D.A. :	yes (socket on top plate) / yes
Type of viewfinder :	whole image viewing and focussing with integral pentaprism.
Mirror details :	rectangular: rear edge pivot :returned to viewing position by winding-on.
Exposures / Format :	36exp. / 36x24mm.
Body dims(WxHxD)/Wt. :	150x95x65mm. / 675gm.
Additional info. :	From about 1963 the Contax name was no longer used on this range of cameras.
Illustrations :	Camera illustrated (p.82/3) is a later version (S/N 111313) with larger wind/rewind knobs and diaphragm coupling.









## Contaflex II

Production commenced :	1954
Production period :	1954 - 1957
Quantity produced :	no information
Serial number notes :	no information
Finish :	chrome plate with black leather panels
Variants :	no information
Country of origin :	West Germany
Manufacturer :	Zeiss Ikon, Stuttgart
Principal Designer :	no information
Noteworthy features :	As Contaflex I but with addition of an integral exposure meter.
Lens mount :	fixed lens
Body mount :	Accessory b'ket for mounting adaptors, converters and attachments of the same types as listed for Contaflex I.
Flange to film plane :	not relevant
Shutter type /travel :	between the lens leaf shutter
Shutter speed range :	1sec.- 1/500th.sec. (rim-set)
Flash synch. / D.A. :	yes / yes
Type of viewfinder :	Whole image viewing and focussing with integral pentaprism.
Mirror details :	rectangular with rear edge pivot:reset by winding-on.
Exposures / Format :	36exp. / 36x24mm.
Body dims(WxHxD)/Wt. :	125x89x63mm. / 690gm.
G.B.price 1954 :	£97.00
Illustrations :	camera illustrated is S/N N56357





## Asahiflex II / Tower 22/23/24 (USA)

Production commenced :	1954
Production period :	1954 - 1957
Quantity produced :	insufficient information
Serial number notes :	insufficient information
Finish :	chrome plate with black leather panels
Variants :	VI = two flash synchronisation sockets
:	V2 = two flash synch. sockets + patch
:	V3 = two flash synch. sockets+s/speeds
:	V4 = as V3- but with a 42mm lens mount
Country of origin :	Japan
Manufacturer :	Asahi Kogaku Goshi
Principal Designer :	Nobuyuki Yoshida
Noteworthy features :	VI as Asahiflex I/V2 with the addition of an 'instant-return' mirror mechanism.
Lens mount :	37mm. screw
Body mount :	37mm. screw (no diaphragm coupling)
Flange to film plane :	45.5mm
Shutter type /travel :	focal plane (cloth blinds) / horizontal
Shutter speed range :	1/25th. - 1/500th. sec. (dial rotates)
Flash synch. / D.A. :	yes / no
Types of viewfinders :	Whole image viewing and focussing (rev) via WLF+mag. Optical finder for 50/58mm
Mirror details :	trapezoidal: rear edge pivot : 'instant return' mechanism.
Exposures / Format :	36exp. / 36x24mm.
Body dims(WxHxD)/Wt. :	145x75x50mm / 500gm. (V2 - closed WLF)
US Price 1956 :	\$80 with f3.5 and \$100 with f2.4
Addition info. :	Tower models had unmarked finder hoods
Comment :	a logical development of Asahiflex I

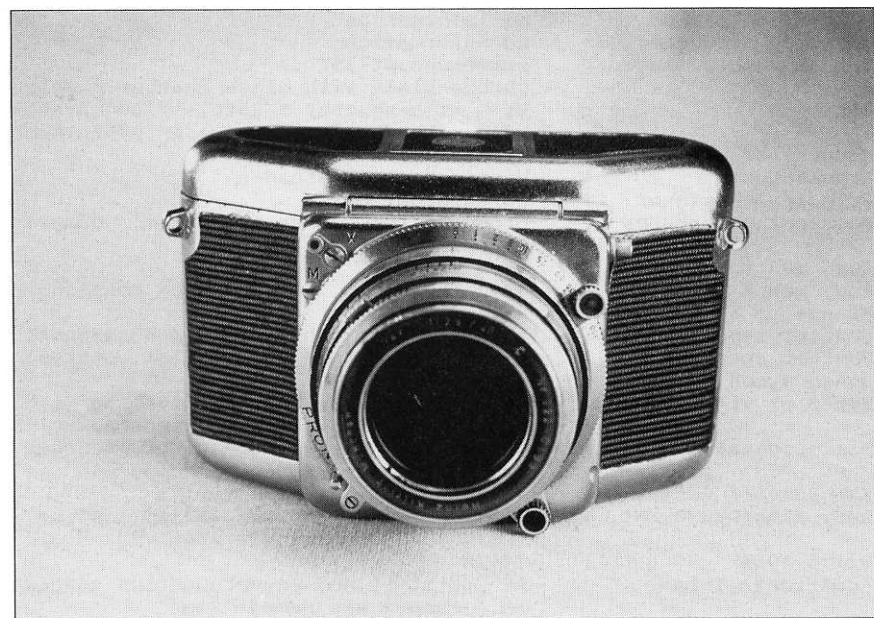
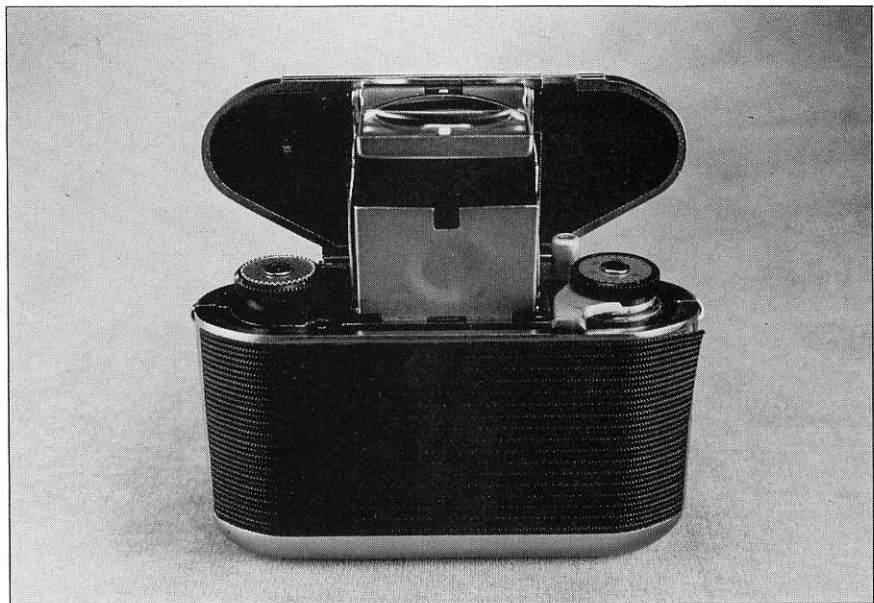




## Edixa Reflex

Production commenced :	1954
Production period :	no information
Quantity produced :	no information
Serial number range :	commenced at 75K
Finish :	chrome plate with black leather panels
Variants :	V1 = with shutter 1/25th.-1/1000th.sec V2 = with shutter 1 sec.- 1/1000th.sec
Country of origin :	W.Germany
Manufacturer :	Wirgin Bros., Wiesbaden
Principal Designer :	no information
Noteworthy features :	produced for use as a 'system' camera for professionals.
Lens mount :	42mm thread
Body mount :	42mm thread (no diaphragm coupling)
Flange to film plane :	45.5mm.
Shutter type /travel :	focal plane(cloth blinds) / horizontal
Shutter speed range :	see above (fast speeds dial rotates)
Flash synch. / D.A. :	yes / no
Types of viewfinders :	Whole image viewing and focussing with interchangeable WLF and pentaprism.
Mirror details :	rectangular : rear edge pivot:returned to viewing position by winding-on.
Exposures / Format :	36exp. / 36x24mm.
Body dims(WxHxD)/Wt. :	140x105x50mm / 750 gm. (V2 with prism) (height with WLF : V1= 85mm V2= 90mm)
Price 1954 :	300DM
Additional info. :	At prototype and pre-production stages this camera was named 'Komet'.
Illustration :	example illustrated is S/N 86725









## Mecaflex

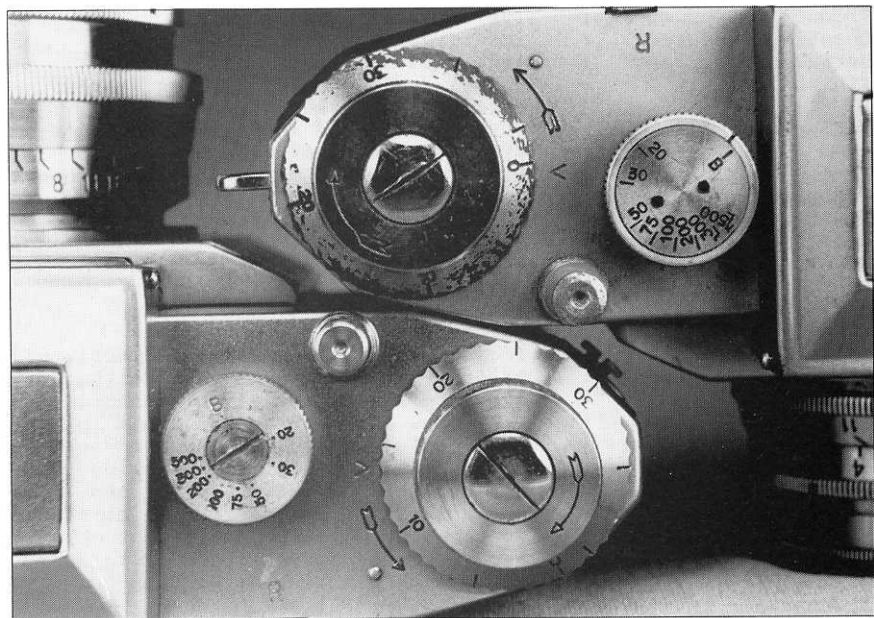
Production commenced :	1954
Production period :	1954
Quantity produced :	1850
Serial number range :	1 - 1850 (example illus. has S/No.256)
Finish :	chrome plate/ panels of ribbed material
Variants :	no information
Country of origin :	West Germany
Manufacturer :	Kilfitt GmbH, Munich
Principal Designer :	designed by Manufacturer
Noteworthy features :	Amazingly small but surprisingly heavy (the body is a thick walled casting) and with many interesting features.
Lens mount :	six lug bayonet
Body mount :	sprung, with inside dia. of 30mm
Flange to film plane :	no information
Shutter type /travel :	behind the lens leaf shutter
Shutter speed range :	1secs.- 1/300th.sec. (rim-set)
Flash synch. / D.A. :	yes / yes
Type of viewfinder :	Whole image viewing and focussing (rev) via WLF with large magnifier.
Mirror details :	no information
Exposures / Format :	50+exp. / 24x24mm.
Body dims(W/H/D)/Wt. :	100x65(95mm open)x70mm(over lens)/625gm
Price 1953 :	300DM - 40/f3.5 Kilar : 500DM - 40/f3.5 Macro Kilar D 1:1
Additional info. :	Only five lenses made for this camera - 40/3.5, 40/2.8, 40/3.5E1:2, 40/3.5D1:1 and 105/4.0 Kilars and Macro Kilars.
Comment :	Designed to be compact and easy to use.





## Exakta VP

Production commenced :	1933
Production period :	1933 - 1939
Quantity produced :	insufficient information
Serial number range :	400K - 590K
Finish :	nickel / black paint / black leather (chrome from 1936)
Variants :	VPB = extended shutter speed range VPC = plate back option Night = modified mount for fast lenses
Country of origin :	Germany
Manufacturer :	Ihagee (Steenbergen family), Dresden
Principal Designer :	Karl Nuchterlein
Noteworthy features :	first miniature roll-film reflex
Lens mount :	40mm screw
Body mount :	40mm screw
Flange to film plane :	71.5mm (at infinity setting)
Shutter type /travel :	focal plane (cloth blinds) / horizontal
Shutter speed range :	1/25th.- 1/1000th.sec. (rotating dial) 12secs.- 1/1000th.sec. on variants - both slow and fast speeds dials rotate.
Flash synch. / D.A. :	no / no (synch:1936/D/A on all variants)
Types of viewfinders :	Whole image viewing and focussing (rev.) via WLF+mag..Direct frame for std.lenses and polished plate for eye level viewing
Mirror details :	Rectangular with cut away front corners and rear edge pivot.Mirror is returned to viewing position by winding-on.
Exposures / Format :	16exp. / VP
Body dims(W/H/D)/Wt. :	155x75x75mm / 625gm.

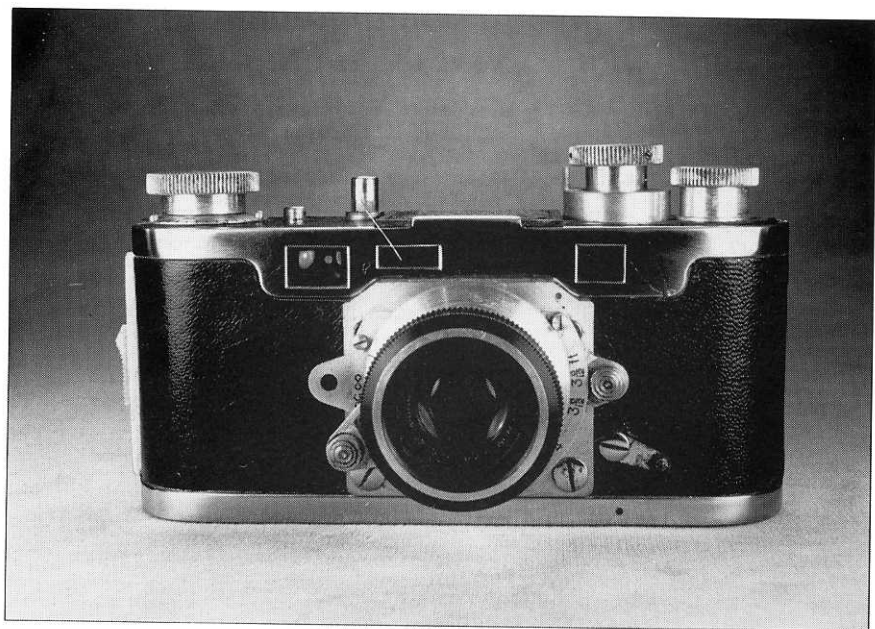


# Production versions of Praktiflex I

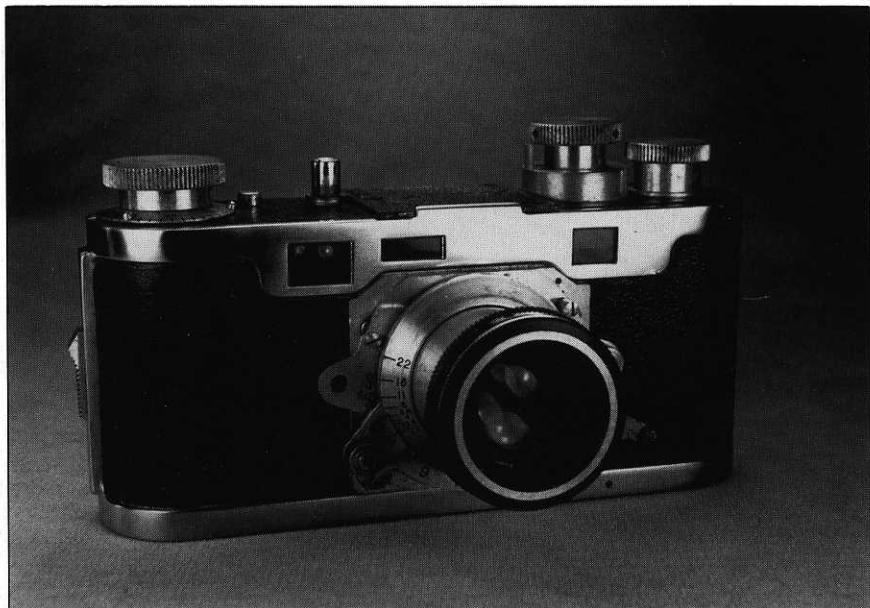
Date	Variant	S/N(known)	Features
1939	V1	1235- 1411	Chrome/black, large knobs, exposure counter inside w/on, slotted screw in shutter dial, 1/20-1/500, shutter release on top plate, no strap lugs, name in black filled script. Mirror movement actuated and controlled by shutter rlse. on all variants.
1939	V2	2132	Chrome/black, large knobs, exposure counter under w/on, no strap lugs.
1940	V3	2909	Chrome/black, small rewind, 20mm wind-on with counter under, no strap lugs.
1940	V3a	3055; 3172	As V3 with brown leather covering.
1940	V3b	3138; 3554 3607	As V3, red leather covering, no lugs.
40/1	V4	3545; 6550	Chrome/black with patent strap lugs.
40/1	V4a	4124; 4907 5342	As V4 with brown leather/grey metal, (but chromed/black filled nameplate)
40/1	V4b	4272; 5046	As V4 with brown leather/green metal.
40/1	V4c	4455	As V4 with red leather covering.
41/2	V5	8165- 9827	Chrome/black, chrome side lugs, new shutter dial with two-hole fixing.
1946	V6	11238; 11396	Black leather/black metal/white filled name, shutter now 1/25-1/500.
46/7	V7	12233-14233	Chrome/black, large wind-on with exposure counter inside.
47/9	V7a	16037-33929	As V7 with lens mount finished black.

(This tabulation produced in collaboration with Jan Bisschops)

Illustrated left: V4 and V5 shutter dial and strap lug detail







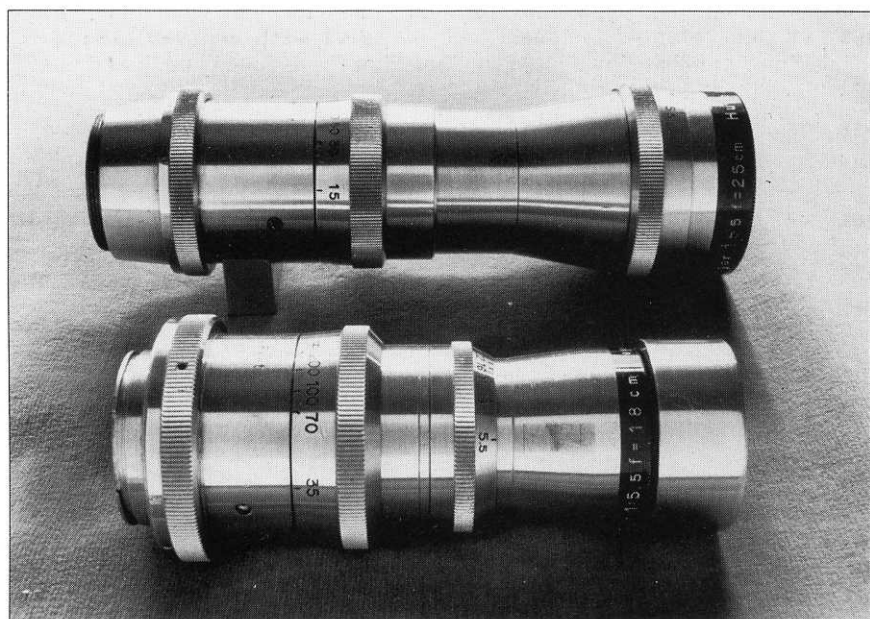
## Alpa Standard

Production commenced :	1942
Production period :	1942 - 1952
Quantity produced :	650 approx.
Serial number range :	11K - 25K
Finish :	chrome plate with black leather panels
Variants :	conversion to Reflex or Prisma
Country of origin :	Switzerland
Manufacturer :	Pignons SA (Bourgeois family)
Principal Designer :	Jacques Bogopolsky (aka Bolsky/Bolsey)
Noteworthy features :	rangfinder focussing only
Lens mount :	bayonet with three sprung lugs
Body mount :	36mm.throat
Flange to film plane :	35mm.
Shutter type /travel :	focal plane(cloth blinds) / horizontal
Shutter speed range :	1sec.- 1/1000th. (inactive dial)
Flash synch. / D.A. :	no / no
Type of viewfinder :	Optical finder for standard lens plus-rangefinder focussing.
Mirror details :	no reflex functions
Exposures / Format :	36exp. / 36x24mm.
Body dims(WxHxD)/Wt. :	140x77x40mm. / 450gm.
Price :	no information
Additional info. :	Pignons offered conversion to Reflex - or to Prisma.
Illustrations :	example illustrated is S/N 11035

## Notes

# Exa variants

Date	Variant	S/N(known)	Qty.prod.	Features
1951	V1	200034	200 approx	1/250th.,black mount,ribbed cloth covering,four flash synch. sockets
1951	V2	200838		as V1 with 1/125th.
1952	V2a	205636 218914		as V2 with chromed mount
1953	V2b	227811		as V2a with leather panels
1955	V3	235K - 245K	10K	as V2b with two co-axial flash sockets
1956	V4	245K - 270K	25K	as V3 - but with the name 'System Exa Rheinmetall'
1957	V5	470K - 520K	50K	as V3 with removable back
1958	V6	530K - 555K	25K	as V3 with embossed name
1961	V7	560K - 620K	60K	as V3 with black rectangular name plate



# Lens serial numbers - preliminary listing

	Zeiss	Meyer	Schneider	Steinheil	Ludwig
1930	1.0M	500K	400K	50K	
1	1.1	525	500	100	
2	1.2	550	600	150	
3	1.3	590	700	200	
4	1.5	630	800	250	
5	1.7M	675K	900K	300K	400K
6	1.9	725	1.0	350	
7	2.1	775	1.1	400	
8	2.3	850	1.2	450	
9	2.5M	925K	1.4M	500K	600K
1940	2.6	1.0	1.5		
1	2.7		1.6		
2	2.8		1.7		
6	2.8		1.8		
7	2.9		1.9		
8	3.0M	1.0M	2.0M	550K	
9	3.1	1.1	2.2	600	
1950	3.2	1.2	2.4	650	
1	3.3	1.3	2.7	700	800K
2	3.4	1.4	3.0	800	
3	3.6	1.5	3.5	900	
4	3.8M	1.6M	4.0M	1.0M	1.1M
5					
6					
7	4.5M	2.0M	5.0M	1.5M	1.4M
8					
9					
1960	5.0M	3.0M	6.5M	2.0M	2.0M

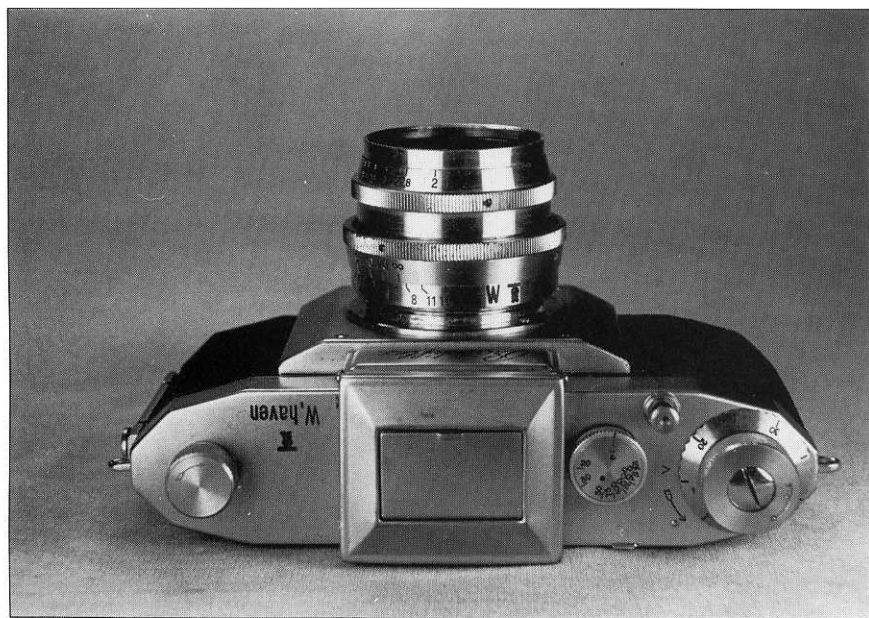
## Author's note:

The primary purpose of this listing is to assist in establishing the chronological correctness of 35mm SLR body/lens combinations

Illustrated left : Meyer 10cm and 10.5cm/2.8 , 18cm and 25cm/5.5



Illustrated : above V4a(4124) and below V5(8383) in Navy markings





## Notes

# Luttons List



# Luttons List